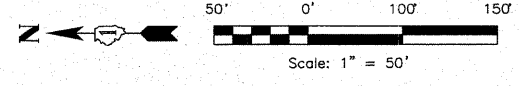


HOT MIX ASPHALT SURFACE REMOVAL 3" AND PLOYMERIZED LEVELING BINDER (MACHINE METHOD) IL-4.75, N50, 1" AND HOT MIX ASPHALT SURFACE COURSE, MIX D, N70, 2" STA 0+50 TO STA 46+55

BEGIN IMPROVEMENTS STA 0+50

END IMPROVEMENTS STA 46+55



LEGEND

- ONE-WAY CRYSTAL MARKER
- TWO-WAY AMBER RAISED REFLECTIVE PAVEMENT MARKER

NOTES:

1. ALL PAVEMENT MARKINGS SHALL BE IN CONFORMANCE WITH THE ILLINOIS MANUAL ON UNIFORM TRAFFIC CONTROL DEVICES FOR STREETS AND HIGHWAYS. ALL MARKINGS SHALL BE THERMOPLASTIC LINES.
2. DIMENSIONS TO PAVEMENT MARKINGS SHALL BE TO THE CENTER OF A SINGLE LINE OR TO THE CENTER OF THE GAP FOR DOUBLE LINE UNLESS OTHERWISE NOTED.
3. ALL DIMENSIONS GIVEN ARE TO THE EDGE OF PAVEMENT AND ARE REFERENCED TO THE CENTER LINE OF PARK BOULEVARD UNLESS OTHERWISE NOTED.

W:\2319-00 - Park Blvd Resurfacing\2009-PLAN\5\dwg\Park Blvd\2319-marking.dwg, 10/15/2009 1:40:36 PM

FILE NAME =	USER NAME =	DESIGNED - SPF	REVISED -	STATE OF ILLINOIS DEPARTMENT OF TRANSPORTATION	PARK BOULEVARD PLAN	F.A.P. RTE.	SECTION	COUNTY	TOTAL SHEETS	SHEET NO.
		DRAWN - FJS	REVISED -			2580	09-00073-00-RS	DuPAGE	16	4
		CHECKED - JMS	REVISED -			CONTRACT NO. 63346				
		DATE - 10/19/09	REVISED -	SCALE: SHEET NO. OF SHEETS STA. TO STA.		FED. ROAD DIST. NO. ILLINOIS FED. AID PROJECT				