

F.A.U. RTE.	SECTION	COUNTY	TOTAL SHEETS	SHEET NO.
2697	09-00089-00-RS	COOK	19	1
FED. ROAD DIST. NO.		ILLINOIS	FED. AID PROJECT	
CONTRACT NO: 63372				

STATE OF ILLINOIS
DEPARTMENT OF TRANSPORTATION
DIVISION OF HIGHWAYS

FOR INDEX OF SHEETS, SEE SHEET NO. 2

PLANS FOR PROPOSED
FEDERAL AID HIGHWAY

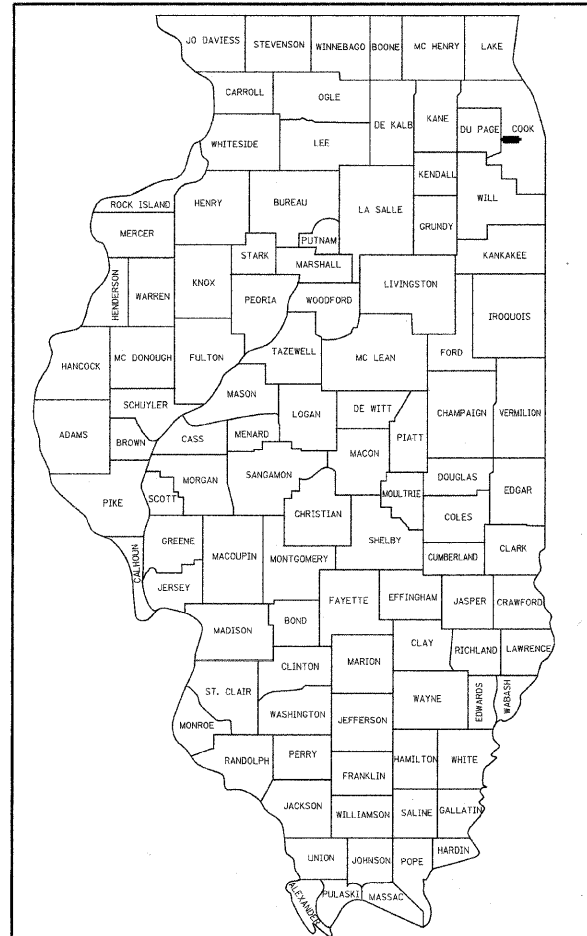
F.A.U. ROUTE 2697 (GILBERT AVENUE)
53RD PLACE TO 47TH STREET (F.A.U. 1488)
SECTION: 09-00089-00-RS
ROADWAY RESURFACING
PROJECT: ARA-9003(423)
VILLAGE OF WESTERN SPRINGS
COOK COUNTY
C-91-827-09

TRAFFIC DATA

ADT:
GILBERT AVENUE = 14,100 (2006)

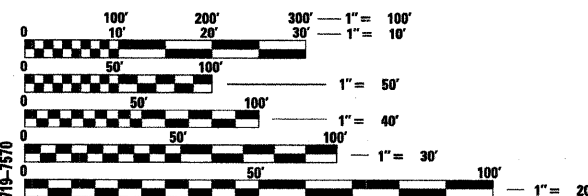
SPEED LIMIT:

GILBERT AVENUE = 35 MPH (POSTED)



LOCATION OF SECTION INDICATED THUS: - [Symbol] -

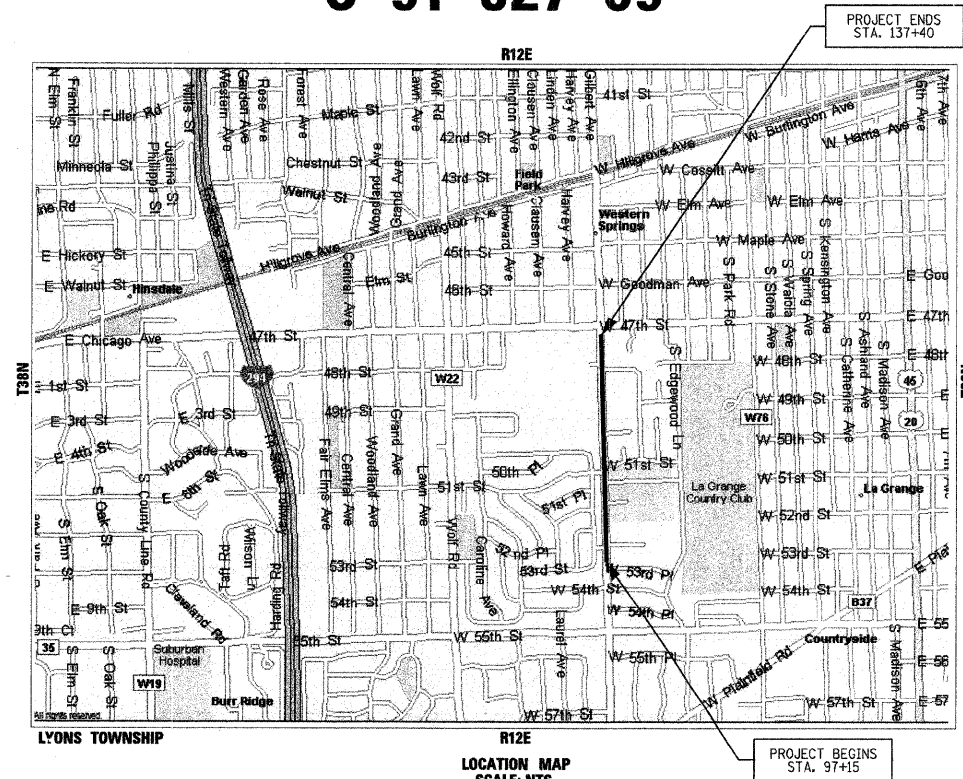
PROJECT LOCATED IN
VILLAGE OF WESTERN SPRINGS
VILLAGE OF LAGRANGE



FULL SIZE PLANS HAVE BEEN PREPARED USING STANDARD
ENGINEERING SCALES. REDUCED SIZED PLANS WILL NOT
CONFORM TO STANDARD SCALES. IN MAKING MEASUREMENTS
ON REDUCED PLANS, THE ABOVE SCALES MAY BE USED.

J.U.L.I.E.
JOINT UTILITY LOCATION INFORMATION FOR EXCAVATION
1-800-892-0123
OR 811

CONTRACT NO. 63372
DESIGN DESIGNATION: MINOR ARTERIAL



LOCATION MAP
SCALE: NTS
GROSS & NET LENGTH OF PROJECT: 4,025 FT. (0.760 MILES)

STATE OF ILLINOIS
DEPARTMENT OF TRANSPORTATION
DIVISION OF HIGHWAYS

APPROVED: October 9, 2009
William J. ...
Village of Western Springs,
Director of Municipal Services

PASSED: OCTOBER 27, 2009
Charles ...
District 1 Engineer of Local Roads & Streets

Releasing for Bid
Based on Limited
Review October 29, 2009

Diane M. O'Keefe
Deputy Director of Highways, Region 1 Engineer

PRINTED BY AUTHORITY OF THE STATE OF ILLINOIS

JJB
JAMES J. BENES & ASSOCIATES
CONSULTING ENGINEERS
950 WARRENVILLE ROAD, SUITE 101
LISLE, IL 60532
(630) 719-7570
SIGNATURE: *[Signature]*
DATE: 10/9/2009
IL LICENSE NO: 062-034438
EXP. DATE: NOVEMBER 30, 2009-2011
FIELD: JAMES J. BENES AND ASSOCIATES, INC.
CIVIL ENGINEERING



FIELD ENGINEER: MARILYN D. SOLOMON (847) 705-4407
CONSULTANT: JAMES J. BENES & ASSOCIATES, INC. (630) 719-7570

F.A.U. RTE.	SECTION	COUNTY	TOTAL SHEETS	SHEET NO.
2697	09-00089-00-RS	COOK	19	2
STA.	TO STA.			
ILLINOIS FED. AID PROJECT				
CONTRACT NO: 63372				

INDEX OF SHEETS

SHEET NO.	TITLE
1	TITLE SHEET
2	INDEX OF SHEETS, GENERAL NOTES AND STATE STANDARDS
3	SUMMARY OF QUANTITIES
4	TYPICAL SECTIONS
5	SCHEDULES OF QUANTITIES
6-8	PLAN SHEETS
9-11	PAVEMENT MARKING PLANS
12	CONSTRUCTION DETAILS
13-19	DISTRICT DETAILS

COMMITMENTS: NONE

LIST OF STATE STANDARDS

000001-05	STANDARD SYMBOLS, ABBREVIATIONS AND PATTERNS
424001-05	CURB RAMPS FOR SIDEWALKS
442201-03	CLASS C AND D PATCHES
604001-03	FRAME AND LIDS TYPE 1
606001-04	CONCRETE CURB TYPE B AND COMBINATION CONCRETE CURB AND GUTTER
701426-03	LANE CLOSURE, MULTILANE, INTERMITTENT OR MOVING OPERATIONS, FOR SPEEDS > 45 MPH
701502-03	URBAN LANE CLOSURE, 2L, 2W, WITH MOUNTABLE MEDIAN
701606-06	URBAN LANE CLOSURE, MULTILANE, 2W WITH MOUNTABLE MEDIAN
701701-06	URBAN LANE CLOSURE, MULTILANE INTERSECTION
701801-04	URBAN LANE CLOSURE, MULTILANE, 1W OR 2W CROSSWALKS OR SIDEWALK CLOSURE
701901-01	TRAFFIC CONTROL DEVICES
720001-01	SIGN PANEL MOUNTING DETAIL
720006-02	SIGN PANEL ERECTION DETAIL
720011-01	METAL POST FOR SIGNS, MARKERS AND DELINEATORS

LIST OF DISTRICT ONE DETAILS

BD-02	DRIVEWAY DETAILS - DISTANCE BETWEEN R.O.W. AND FACE OF CURB IS LESS THAN 15'(4.5m)
BD-08	DETAIL FOR FRAMES AND LIDS ADJUSTMENT WITH MILLING
BD-24	CURB OR CURB AND GUTTER REMOVAL AND REPLACEMENT
BD-32	BUTT JOINT AND HMA TAPER DETAILS
TC-10	TRAFFIC CONTROL AND PROTECTION FOR SIDE ROADS, INTERSECTIONS, AND DRIVEWAYS
TC-13	DISTRICT ONE TYPICAL PAVEMENT MARKINGS
TC-16	PAVEMENT MARKING LETTERS AND SYMBOLS FOR TRAFFIC STAGING

GENERAL NOTES


- ACCESS TO LOCAL RESIDENCES AND BUSINESSES SHALL BE MAINTAINED DURING CONSTRUCTION.
- THE CONTRACTOR SHALL GIVE THE MUNICIPALITY AND JAMES J. BENES AND ASSOCIATES, INC. THREE (3) WORKING DAYS NOTICE PRIOR TO THE COMMENCEMENT OF WORK. JAMES J. BENES AND ASSOCIATES, INC.: (630) 719-7570
- ALL ELEVATIONS ARE ON U.S.G.S. DATUM.
- NEITHER THE ENGINEER, NOR THE OWNER, SHALL ASSUME ANY OF THE RESPONSIBILITIES OF THE CONTRACTOR'S SUPERINTENDENT OR OF SUBCONTRACTORS. ADDITIONALLY, NEITHER THE ENGINEER, NOR THE OWNER, SHALL ADVISE ON, OR ISSUE DIRECTIONS CONCERNING, ASPECTS OF CONSTRUCTION MEANS, METHODS, TECHNIQUES, SEQUENCES OR PROCEDURES, OR SAFETY PRECAUTIONS AND/OR PROGRAMS IN CONNECTION WITH THE WORK.
- THE LOCATIONS OF PUBLIC OR PRIVATE UTILITIES SHOWN ON THE PLANS ARE APPROXIMATE AND THEIR ACCURACY IS NOT GUARANTEED. THE CONTRACTOR SHALL VERIFY THE EXACT LOCATION AND ELEVATION OF ALL UTILITIES. THE CONTRACTOR SHALL REPORT ANY ENCOUNTERED DISCREPANCIES TO THE ENGINEER AT ONCE. THE CONTRACTOR SHALL TAKE DUE CARE IN ALL PHASES OF CONSTRUCTION TO PROTECT ANY UTILITIES WHICH MAY BE AFFECTED BY THE WORK. ANY DAMAGE TO EXISTING UTILITIES SHALL BE REPAIRED AT THE CONTRACTOR'S EXPENSE.
- THE CONTRACTOR SHALL KEEP THE CONSTRUCTION AREA FREE OF DEBRIS AND/OR OBJECTIONABLE MATERIALS DURING CONSTRUCTION.
- THE CONTRACTOR SHALL MAINTAIN ALL EXISTING DRAINAGE FACILITIES DURING CONSTRUCTION AND SHALL REPAIR ANY DRAINAGE FACILITIES DAMAGED DURING CONSTRUCTION. THIS WORK SHALL BE CONSIDERED AS INCLUDED IN THE CONTRACT AND WILL NOT BE PAID FOR SEPARATELY.
- THE CONTRACTOR SHALL VERIFY THE ELEVATIONS OF EXISTING STORM SEWERS PRIOR TO THE CONSTRUCTION OF PROPOSED STORM SEWER.
- BEFORE STARTING AND EXCAVATION, THE CONTRACTOR SHALL CALL "JULIE" AT 1-800-892-0123 FOR FIELD LOCATIONS OF BURIED ELECTRIC, TELEPHONE AND GAS FACILITIES. (48 HOUR NOTIFICATION IS REQUIRED)
- UNLESS OTHERWISE SHOWN, TRANSITIONS OF 10' SHALL BE USED TO MATCH PROPOSED CURB AND GUTTER AND MEDIAN ITEMS OF WORK TO EXISTING CURB AND GUTTERS AND MEDIANS IN THE FIELD. THE TRANSITIONS SHALL BE PAID FOR AT THE CONTRACT UNIT PRICE FOR THE PROPOSED ITEMS OF WORK SPECIFIED.
- THE CONTRACTOR SHALL COORDINATE CONSTRUCTION ACTIVITIES WITH UTILITY COMPANIES AND THE MUNICIPALITY.
- BARRICADES: THE CONTRACTOR SHALL PROVIDE AND INSTALL TWO (2) WEIGHTED SANDBAGS ON EACH TYPE I AND TYPE II BARRICADE USED - ONE (1) WEIGHTED SANDBAG ACROSS EACH BOTTOM RAIL.
- WHEN MILLED PAVEMENT IS OPEN TO TRAFFIC, THE MAXIMUM GRADE DIFFERENTIAL BETWEEN PASSES OF THE MILLING MACHINE SHALL NOT EXCEED 1-1/2 INCHES WHERE THE SPEED LIMIT IS 45 MPH OR LESS, AND 1 INCH WHERE THE SPEED LIMIT IS GREATER THAN 45 MPH. WITH WRITTEN APPROVAL FROM THE ENGINEER, A MAXIMUM GRADE DIFFERENTIAL OF 3 INCHES MAY BE ALLOWED IF THE EDGE OF THE MILLING IS SLOPED A MINIMUM OF 1:3 (V:H).
- BUTT JOINTS WILL BE INSTALLED AT THE ENDS OF ALL RESURFACING (WHERE RESURFACING MEETS EXISTING PAVEMENT). IN ACCORDANCE WITH THE "BUTT JOINTS AND HOT-MIX ASPHALT TAPER DETAILS" SHEET INCLUDED IN THE PLANS, UNLESS OTHERWISE SPECIFIED.
- THE RESIDENT ENGINEER SHALL CONTACT THE AREA TRAFFIC FIELD CONTROL ENGINEER AT (847) 705-4470 PRIOR TO PLACEMENT PLACING ANY PAVEMENT MARKINGS.
- THE CONTRACTOR SHALL CONTACT THE TRAFFIC CONTROL SUPERVISOR AT (847) 705-4470 A MINIMUM OF 72 HOURS PRIOR TO THE PLACEMENT OF ANY TEMPORARY TRAFFIC CONTROL DEVICES.

REVISIONS	
NAME	DATE

ILLINOIS DEPARTMENT OF TRANSPORTATION
F.A.U. ROUTE 2697
GILBERT AVENUE

INDEX OF SHEETS,
GENERAL NOTES
AND STATE STANDARDS

SCALE: N/A
DATE: 10/01/09
DRAWN BY: BCD
CHECKED BY: BDH

 **JAMES J. BENES & ASSOCIATES, INC.**
950 Warrenville Road, Suite 101, Lisle, Illinois 60532
Tel. (630) 719-7570 • Fax (630) 719-7589

CONTRACT NO: 63372

SUMMARY OF QUANTITIES				CONSTRUCTION TYPE CODE	
CODE NO.	ITEM	UNIT	TOTAL QUANTITY	ROADWAY	
				100% FED 0% VILLAGE 1000-2A	
20201200	REMOVAL AND DISPOSAL OF UNSUITABLE MATERIAL	CU YD	200	200	
20700420	POROUS GRANULAR EMBANKMENT, SUBGRADE	CU YD	200	200	
21001000	GEOTECHNICAL FABRIC FOR GROUND STABILIZATION	SQ YD	600	600	
25200200	SUPPLEMENTAL WATERING	UNIT	15	15	
40201000	AGGREGATE FOR TEMPORARY ACCESS	TON	100	100	
40600200	BITUMINOUS MATERIALS (PRIME COAT)	TON	15	15	
40600300	AGGREGATE (PRIME COAT)	TON	75	75	
40600400	MIXTURE FOR CRACKS, JOINTS, AND FLANGEWAYS	TON	34	34	
40600635	LEVELING BINDER (MACHINE METHOD), N70	TON	1,306	1,306	
40600895	CONSTRUCTING TEST STRIP	EACH	1	1	
40600982	HOT-MIX ASPHALT SURFACE REMOVAL - BUTT JOINT	SQ YD	163	163	
40603340	HOT-MIX ASPHALT SURFACE COURSE, MIX "D", N70	TON	2,092	2,092	
42300400	PORTLAND CEMENT CONCRETE DRIVEWAY PAVEMENT, 8 INCH	SQ YD	42	42	
42400800	DETECTABLE WARNINGS	SQ FT	136	136	
44000162	HOT-MIX ASPHALT SURFACE REMOVAL, 3 1/4"	SQ YD	17,661	17,661	
44000200	DRIVEWAY PAVEMENT REMOVAL	SQ YD	67	67	
44001700	COMBINATION CONCRETE CURB AND GUTTER REMOVAL AND REPLACEMENT	FOOT	1,351	1,351	
44201749	CLASS D PATCHES, TYPE I, 9 INCH	SQ YD	25	25	
44201753	CLASS D PATCHES, TYPE II, 9 INCH	SQ YD	80	80	
44201757	CLASS D PATCHES, TYPE III, 9 INCH	SQ YD	135	135	
44201759	CLASS D PATCHES, TYPE IV, 9 INCH	SQ YD	160	160	
50300300	PROTECTIVE COAT	SQ YD	565	565	
60257900	MANHOLES TO BE RECONSTRUCTED	EACH	1	1	
60266600	VALVE BOXES TO BE ADJUSTED	EACH	1	1	

SUMMARY OF QUANTITIES				CONSTRUCTION TYPE CODE	
CODE NO.	ITEM	UNIT	TOTAL QUANTITY	ROADWAY	
				100% FED 0% VILLAGE 1000-2A	
60300105	FRAMES AND GRATES TO BE ADJUSTED	EACH	7	7	
60300310	FRAMES AND LIDS TO BE ADJUSTED (SPECIAL)	EACH	20	20	
60406100	FRAMES AND LIDS, TYPE 1, CLOSED LID	EACH	11	11	
67100100	MOBILIZATION	L SUM	1	1	
70101700	TRAFFIC CONTROL AND PROTECTION	L SUM	1	1	
70106800	CHANGEABLE MESSAGE SIGN	CAL MO	2	2	
70300100	SHORT-TERM PAVEMENT MARKING	FOOT	1,650	1,650	
70300210	TEMPORARY PAVEMENT MARKING - LETTERS & SYMBOLS	SQ FT	590	590	
70300220	TEMPORARY PAVEMENT MARKING - LINE 4"	FOOT	9,916	9,916	
70300240	TEMPORARY PAVEMENT MARKING - LINE 6"	FOOT	1,978	1,978	
70300260	TEMPORARY PAVEMENT MARKING - LINE 12"	FOOT	1,454	1,454	
70300280	TEMPORARY PAVEMENT MARKING - LINE 24"	FOOT	131	131	
70301000	WORK ZONE PAVEMENT MARKING REMOVAL	SQ FT	1,350	1,350	
72000100	SIGN PANEL - TYPE 1	SQ FT	33	33	
72900200	METAL POST - TYPE B	FOOT	56	56	
* 78000100	THERMOPLASTIC PAVEMENT MARKING - LETTERS & SYMBOLS	SQ FT	590	590	
* 78000200	THERMOPLASTIC PAVEMENT MARKING - LINE 4"	FOOT	9,916	9,916	
* 78000400	THERMOPLASTIC PAVEMENT MARKING - LINE 6"	FOOT	1,978	1,978	
* 78000600	THERMOPLASTIC PAVEMENT MARKING - LINE 12"	FOOT	1,454	1,454	
* 78000650	THERMOPLASTIC PAVEMENT MARKING - LINE 24"	FOOT	131	131	
44004600	SIDEWALK REMOVAL AND REPLACEMENT	SQ FT	647	647	
Z0018500	DRAINAGE STRUCTURES TO BE CLEANED	EACH	10	10	
Z0066700	STABILIZED DRIVEWAYS 10"	SQ YD	25	25	

LEGEND
* -DENOTES SPECIALTY ITEM


REVISIONS	
NAME	DATE

ILLINOIS DEPARTMENT OF TRANSPORTATION
F.A.U. ROUTE 2697
GILBERT AVENUE

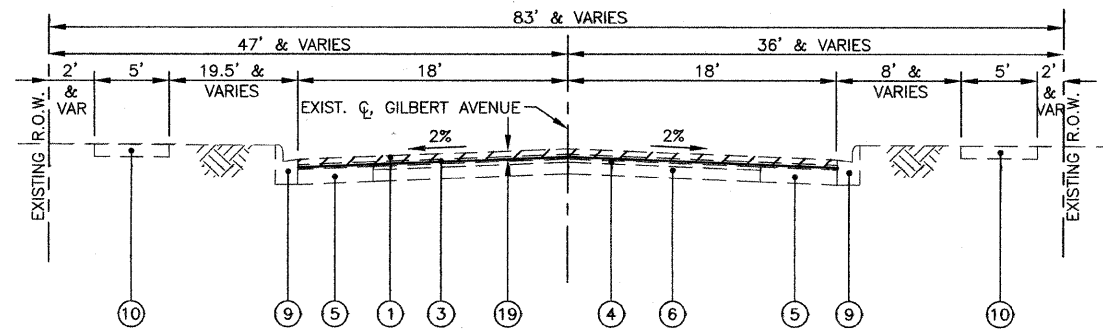
SUMMARY OF QUANTITIES

SCALE: N/A
DATE: 10/01/09

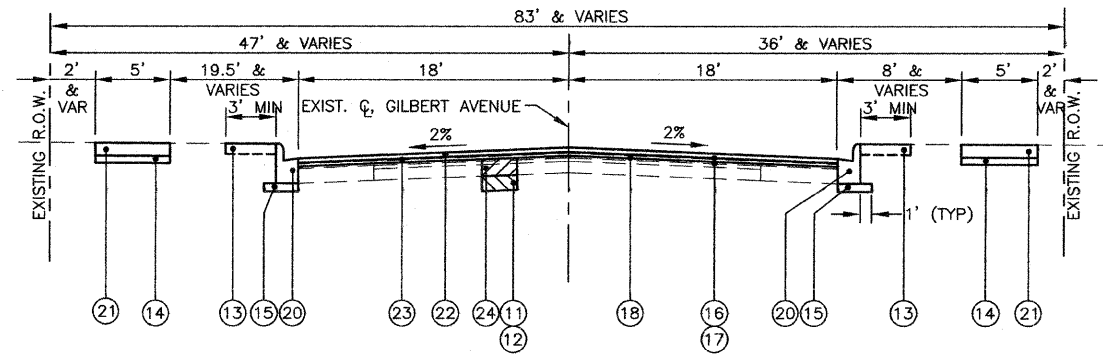
DRAWN BY: BCD
CHECKED BY: BDM



JAMES J. BENES & ASSOCIATES, INC.
950 Warrenville Road, Suite 101, Lisle, Illinois 60532
Tel. (630) 719-7570 - Fax (630) 719-7589



EXISTING TYPICAL SECTION - GILBERT AVENUE
STA. 97+15 TO STA. 137+40



PROPOSED TYPICAL SECTION - GILBERT AVENUE
STA. 97+15 TO STA. 137+40

- LEGEND**
- ① EXISTING HOT-MIX ASPHALT SURFACE COURSE, 1 1/2" & VARIES
 - ② EXISTING HOT-MIX ASPHALT BINDER COURSE, 1 1/2" & VARIES
 - ③ EXISTING HOT-MIX ASPHALT BINDER COURSE, 2 1/2" & VARIES
 - ④ EXISTING HOT-MIX ASPHALT PAVEMENT, 3" & VARIES
 - ⑤ EXISTING HOT-MIX ASPHALT BASE COURSE, 11" & VARIES
 - ⑥ EXISTING P.C.C. BASE COURSE, 8" & VARIES
 - ⑦ EXISTING P.C.C. BASE COURSE, 9" & VARIES
 - ⑧ EXISTING CONCRETE CURB AND GUTTER, TYPE B-6.12
 - ⑨ EXISTING CONCRETE CURB AND GUTTER, TYPE B-6.24
 - ⑩ EXISTING P.C.C. SIDEWALK
 - ⑪ POROUS GRANULAR EMBANKMENT, SUBGRADE (AT LOCATIONS DESIGNATED BY THE ENGINEER)
 - ⑫ GEOTECHNICAL FABRIC FOR GROUND STABILIZATION (AT LOCATIONS DESIGNATED BY THE ENGINEER)
 - ⑬ SODDING (INCLUDES 4" PULVERIZED TOP SOIL AND FERTILIZER) (AT LOCATIONS DESIGNATED BY THE ENGINEER) (COST INCLUDED IN CONCRETE CURB AND GUTTER REMOVAL AND REPLACEMENT)
 - ⑭ SUB-BASE GRANULAR MATERIAL, TYPE B 2" (COST INCLUDED IN SIDEWALK REMOVAL AND REPLACEMENT)
 - ⑮ SUB-BASE GRANULAR MATERIAL, TYPE B 4" (COST INCLUDED IN CONCRETE CURB AND GUTTER REMOVAL AND REPLACEMENT)
 - ⑯ AGGREGATE (PRIME COAT)
 - ⑰ BITUMINOUS MATERIALS (PRIME COAT)
 - ⑱ MIXTURE FOR CRACKS, JOINTS AND FLANGEWAYS
 - ⑲ HOT-MIX ASPHALT SURFACE REMOVAL, 3 1/4"
 - ⑳ COMBINATION CONCRETE CURB AND GUTTER REMOVAL AND REPLACEMENT (THICKNESS OF GUTTER FLAG SHALL BE 10" EXCEPT WHERE ADJACENT TO PCC PAVEMENT. WHEN ADJACENT TO P.C.C. PAVEMENT, BOTTOM OF GUTTER SHALL BE AT THE SAME GRADE AS THE BOTTOM OF THE P.C.C. PAVEMENT)
 - ㉑ SIDEWALK REMOVAL AND REPLACEMENT
 - ㉒ HOT-MIX ASPHALT SURFACE COURSE, MIX "D", N70, 2"
 - ㉓ LEVELING BINDER (MACHINE METHOD), N50, 1 1/4"
 - ㉔ CLASS D PATCHES, 9" (AT LOCATIONS DESIGNATED BY THE ENGINEER)

HOT-MIX ASPHALT MIXTURE REQUIREMENTS

MIXTURE TYPE	AC TYPE	VOIDS
PAVEMENT RESURFACING		
HOT-MIX ASPHALT SURFACE COURSE, MIX "D" N70, 2" (IL-9.5mm)	PG 64-22	4% @ 70 Gyr.
LEVEL BINDER (MACHINE METHOD), N70, (IL-9.5mm)	PG 64-22*	4% @ 70 Gyr.
PATCHING		
CLASS D PATCHES, 9" (HMA BINDER IL-19mm)	PG 64-22*	4% @ 70 Gyr.
DRIVEWAYS		
HOT-MIX ASPHALT BASE COURSE, 8"	PG 64-22*	4% @ 50 Gyr.
HOT-MIX ASPHALT SURFACE COURSE, MIX "C" N50, 2" (IL-9.5mm)	PG 64-22	4% @ 50 Gyr.

- NOTE: 1) THE UNIT WEIGHT USED TO CALCULATE ALL HMA QUANTITIES IS 112 LB/SY/IN
 2)*-WHEN RAP EXCEEDS 20% THE NEW ASPHALT BINDER IN THE MIX SHALL BE PG 58-22
 3) THE MILLING SHALL BE DONE PRIOR TO PATCHING

REVISIONS	
NAME	DATE

ILLINOIS DEPARTMENT OF TRANSPORTATION
F.A.U. ROUTE 2697
GILBERT AVENUE

TYPICAL SECTIONS

SCALE: NTS
DATE: 10/01/09

DRAWN BY: BCD
CHECKED BY: BDH



JAMES J. BENES & ASSOCIATES, INC.
950 Warrenville Road, Suite 101, Lisle, Illinois 60532
Tel. (630) 719-7570 • Fax (630) 719-7589

DRIVEWAY QUANTITY SCHEDULE					
STATION	OFFSET	EXISTING PAVEMENT	DRIVEWAY PAVEMENT REMOVAL (SQ. YD.)	STABILIZED DRIVEWAYS 10" (SQ. YD.)	P.C.C. DRIVEWAY PVMT 8 INCHES (SQ. YD.)
GILBERT AVENUE					
101+00	RT	HMA	5.0	5.0	
104+07	RT	HMA	10.0	10.0	
107+08	RT	HMA	5.0	5.0	
126+46	RT	HMA	5.0	5.0	
119+85	LT	P.C.C.	7.0		7.0
136+28	RT	P.C.C.	35.0		35.0
TOTAL QUANTITY =			67.0	25.0	42.0

SIDEWALK REMOVAL AND REPLACEMENT		
LOCATION	SIDE	QUANTITY (SQ. FT.)
GILBERT AVENUE		
SW RETURN 52ND PLACE	LT	35
NW RETURN 52ND PLACE	LT	30
SE RETURN COMMUNITY MEMORIAL DR.	RT	37
NE RETURN COMMUNITY MEMORIAL DR.	RT	37
SW RETURN 51ST STREET	LT	27
NW RETURN 51ST STREET	LT	23
SE RETURN 51ST STREET	RT	35
NE RETURN 51ST STREET	RT	66
STA. 114+67	LT	26
SE RETURN 50TH STREET	RT	41
NE RETURN 50TH STREET	RT	43
STA. 122+88	RT	50
STA. 127+80	RT	75
SE RETURN MASON DRIVE	RT	39
NE RETURN MASON DRIVE	RT	36
NW RETURN 48TH STREET	LT	49
TOTAL QUANTITY =		647

COMBINATION CONCRETE CURB AND GUTTER REMOVAL AND REPLACEMENT		
STATION	SIDE	QUANTITY (FEET)
GILBERT AVENUE		
97+94	RT	6
99+94	LT	17
100+20	LT	16
100+44	LT	46
100+93	RT	6
101+17	RT	5
102+19	RT	10
102+51	LT	8
103+65	LT	133
104+08	RT	43
104+87	RT	8
106+07	RT	95
107+38	RT	12
108+81	RT	6
108+71	RT	102
111+24	RT	12
111+75	RT	11
112+50	RT	28
112+96	LT	8
113+23	LT	9
113+81	RT	16
114+12	RT	11
114+55	RT	30
114+62	LT	9
115+03	RT	33
115+05	LT	40
117+16	RT	11
118+46	RT	25
118+85	RT	10
119+38	LT	12
119+45	RT	13
119+63	LT	14
119+93	RT	13
120+56	LT	31
120+57	RT	50
122+39	RT	37
123+12	RT	7
124+43	LT	12
124+82	RT	20
125+91	RT	21
126+31	RT	30
127+67	RT	72
127+88	LT	22
128+74	LT	57
129+44	RT	12
129+92	RT	12
130+65	RT	8
131+04	RT	12
131+43	RT	34
131+68	LT	12
133+34	RT	37
134+91	LT	8
135+79	LT	5
136+15	RT	34
TOTAL QUANTITY =		1,351

MANHOLES TO BE RECONSTRUCTED		
STATION	OFFSET (FEET)	QUANTITY (EACH)
GILBERT AVENUE		
131+32	10' LT	1
TOTAL QUANTITY =		1

FRAMES AND GRATES TO BE ADJUSTED		
STATION	OFFSET (FEET)	QUANTITY (EACH)
GILBERT AVENUE		
99+86	36' LT	1
110+68	18' RT	1
118+69	18' RT	1
120+87	18' RT	1
124+98	19' RT	1
127+87	18' RT	1
127+87	27' RT	1
TOTAL QUANTITY =		7

FRAMES AND LIDS TO BE ADJUSTED (SPECIAL)		
STATION	OFFSET (FEET)	QUANTITY (EACH)
GILBERT AVENUE		
100+62	38' RT	1
111+53	23' RT	1
111+56	16' RT	1
114+61	13' RT	1
114+83	16' RT	1
120+71	15' RT	1
123+22	10' LT	1
123+85	17' RT	1
124+00	10' LT	1
124+40	14' RT	1
126+85	16' RT	1
129+54	15' RT	1
129+86	17' RT	1
130+52	10' LT	1
131+39	22' LT	1
131+42	28' LT	1
131+45	22' LT	1
134+82	10' LT	1
135+93	17' RT	1
137+30	12' LT	1
TOTAL QUANTITY =		20

FRAMES AND LIDS, TYPE 1, CLOSED LID		
STATION	OFFSET (FEET)	QUANTITY (EACH)
GILBERT AVENUE		
111+56	16' RT	1
114+61	13' RT	1
114+83	16' RT	1
120+71	15' RT	1
124+40	14' RT	1
126+85	16' RT	1
129+86	17' RT	1
131+39	22' LT	1
131+42	28' LT	1
131+45	22' LT	1
134+82	10' LT	1
TOTAL QUANTITY =		11

VALVE BOXES TO BE ADJUSTED		
STATION	OFFSET (FEET)	QUANTITY (EACH)
GILBERT AVENUE		
126+09	13' RT	1
TOTAL QUANTITY =		1

DRAINAGE STRUCTURES TO BE CLEANED		
STATION	OFFSET (FEET)	QUANTITY (EACH)
GILBERT AVENUE		
99+86	36' LT	1
111+53	23' RT	1
120+87	18' RT	1
123+22	10' LT	1
124+00	10' LT	1
127+87	18' RT	1
127+87	27' RT	1
130+52	10' LT	1
134+82	10' LT	1
137+30	10' LT	1
TOTAL QUANTITY =		10

JJB JAMES J. BENES & ASSOCIATES, INC.
 950 Warrenville Road, Suite 101, Lisle, Illinois 60532
 Tel. (630) 719-7570 • Fax (630) 719-7589

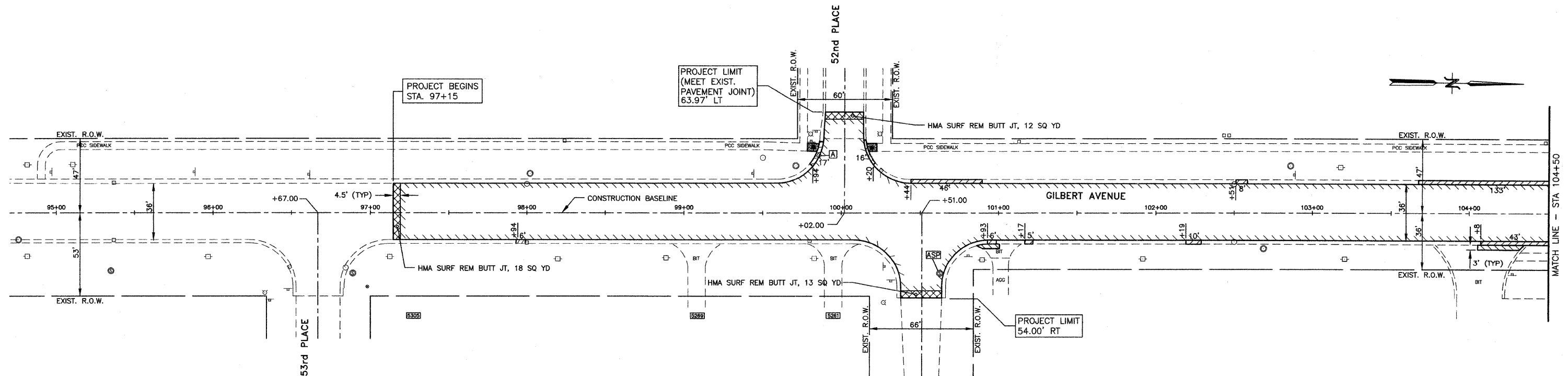
REVISIONS	
NAME	DATE

ILLINOIS DEPARTMENT OF TRANSPORTATION
 F.A.U. ROUTE 2697
 GILBERT AVENUE

SCHEDULE OF QUANTITIES

SCALE: N/A
 DATE: 10/01/09

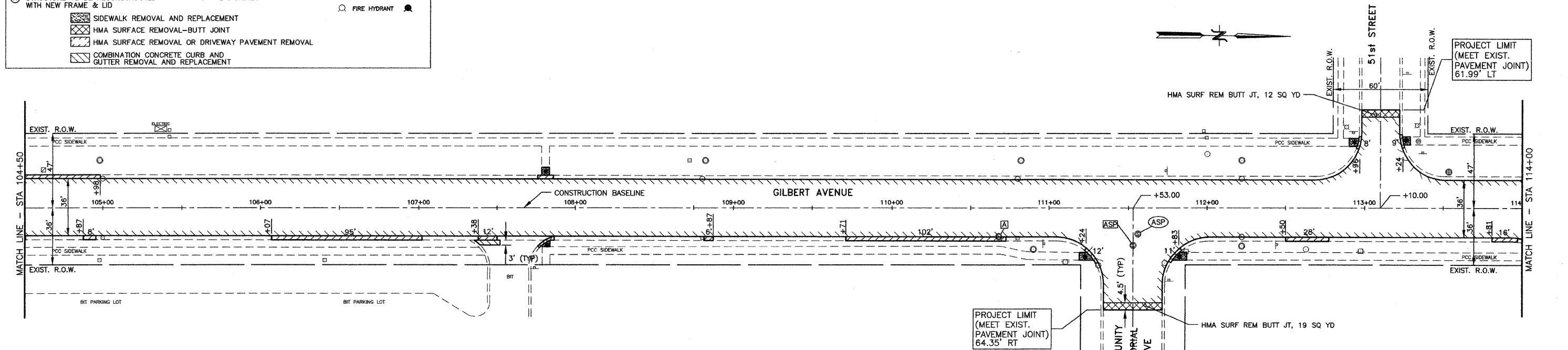
DRAWN BY: BCD
 CHECKED BY: BDH



LEGEND

[A] STRUCTURE TO BE ADJUSTED	[REM] STRUCTURE TO BE REMOVED	[EXISTING] VALVE VAULT	[PROPOSED] VALVE VAULT
[R] STRUCTURE TO BE RECONSTRUCTED	[ASP] STRUCTURE TO BE ADJUSTED SPECIAL	[M] MANHOLE	[M] MANHOLE
[F] FILLING EXISTING STRUCTURE	[ASP] STRUCTURE TO BE ADJUSTED SPECIAL WITH NEW FRAME AND LID	[C] CATCH BASIN	[C] CATCH BASIN
[A] STRUCTURE TO BE ADJUSTED WITH NEW FRAME & LID	[*] CURB RAMP ACCESSIBLE TO THE DISABLED	[I] INLET	[I] INLET
[R] STRUCTURE TO BE RECONSTRUCTED WITH NEW FRAME & LID		[FH] FIRE HYDRANT	[FH] FIRE HYDRANT
[X] SIDEWALK REMOVAL AND REPLACEMENT			
[X] HMA SURFACE REMOVAL-BUTT JOINT			
[X] HMA SURFACE REMOVAL OR DRIVEWAY PAVEMENT REMOVAL			
[X] COMBINATION CONCRETE CURB AND GUTTER REMOVAL AND REPLACEMENT			

HMA SC D N70 (2"), 385 TONS
 LEV BIND MM N70 (1 1/4"), 240 TONS
 HMA SURF REM 3 1/4", 3254 SY



HMA SC D N70 (2"), 497 TONS
 LEV BIND MM N70 (1 1/4"), 310 TONS
 HMA SURF REM 3 1/4", 4193 SY

JJB JAMES J. BENES & ASSOCIATES, INC.
 950 Warrenville Road, Suite 101, Lisle, Illinois 60532
 Tel. (630) 719-7570 • Fax (630) 719-7589

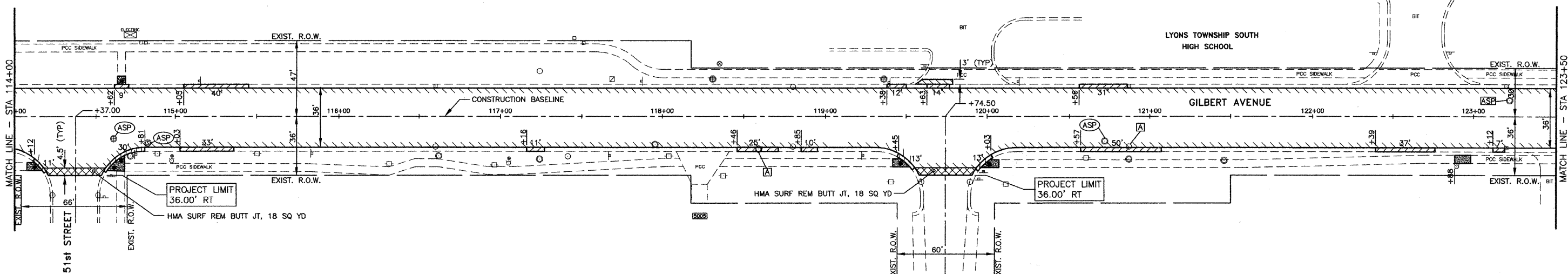
REVISIONS	
NAME	DATE

ILLINOIS DEPARTMENT OF TRANSPORTATION
 F.A.U. ROUTE 2697
 GILBERT AVENUE

PLAN SHEET

SCALE: 1"=30'
 DATE: 10/01/09

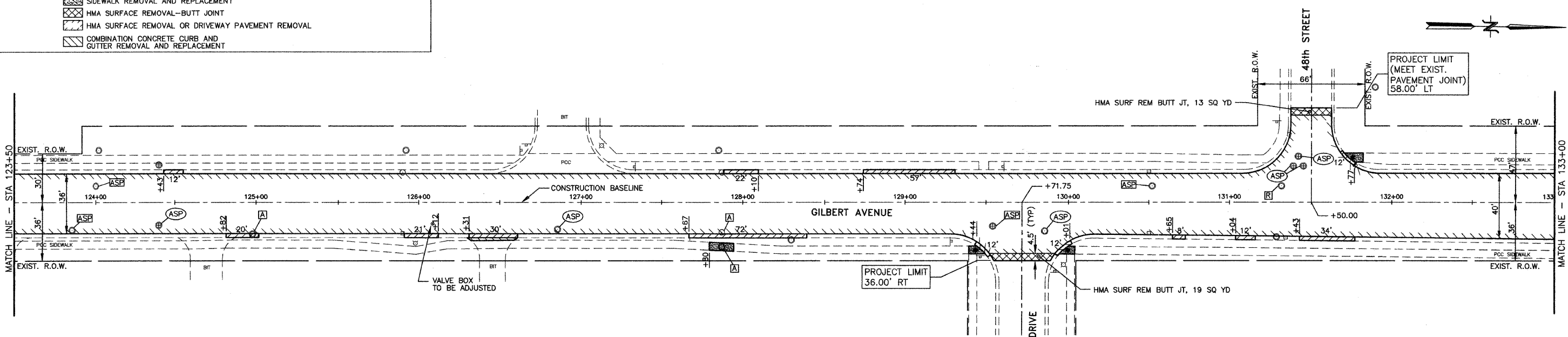
DRAWN BY: BCD
 CHECKED BY: BDH



LEGEND

[A] STRUCTURE TO BE ADJUSTED	[REM] STRUCTURE TO BE REMOVED	EXISTING	PROPOSED
[R] STRUCTURE TO BE RECONSTRUCTED	[ASP] STRUCTURE TO BE ADJUSTED SPECIAL	⊗ VALVE VAULT	⊗
[F] FILLING EXISTING STRUCTURE	[ASP] STRUCTURE TO BE ADJUSTED SPECIAL WITH NEW FRAME AND LID	⊙ MANHOLE	⊙
[A] STRUCTURE TO BE ADJUSTED WITH NEW FRAME & LID	* CURB RAMPS ACCESSIBLE TO THE DISABLED	○ CATCH BASIN	●
[R] STRUCTURE TO BE RECONSTRUCTED WITH NEW FRAME & LID		□ INLET	■
		○ FIRE HYDRANT	●
[Hatched Box] SIDEWALK REMOVAL AND REPLACEMENT			
[Cross-hatched Box] HMA SURFACE REMOVAL-BUTT JOINT			
[Diagonal-hatched Box] HMA SURFACE REMOVAL OR DRIVEWAY PAVEMENT REMOVAL			
[Diagonal-hatched Box] COMBINATION CONCRETE CURB AND GUTTER REMOVAL AND REPLACEMENT			

HMA SC D N70 (2"), 476 TONS
 LEV BIND MM N70 (1 1/4"), 298 TONS
 HMA SURF REM 3 1/4", 4022 SY



HMA SC D N70 (2"), 497 TONS
 LEV BIND MM N70 (1 1/4"), 310 TONS
 HMA SURF REM 3 1/4", 4193 SY

REVISIONS	
NAME	DATE

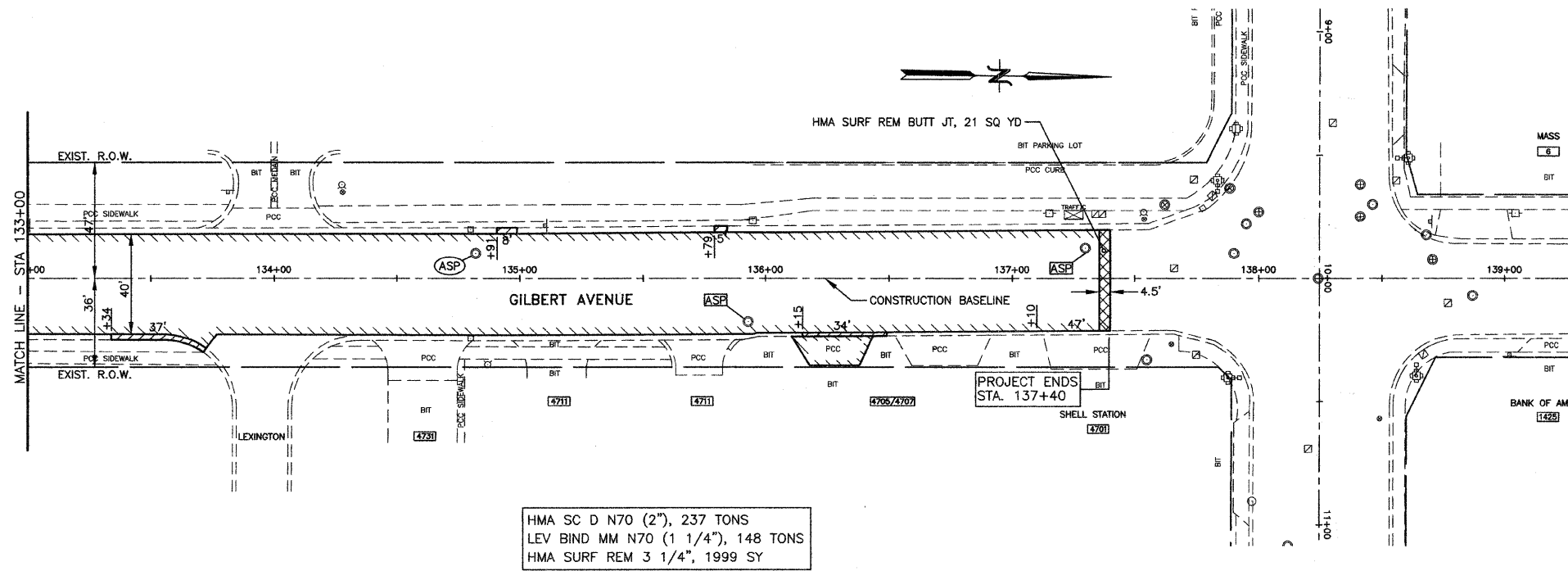
ILLINOIS DEPARTMENT OF TRANSPORTATION
 F.A.U. ROUTE 2697
 GILBERT AVENUE
 PLAN SHEET

JJB JAMES J. BENES & ASSOCIATES, INC.
 950 Warrenville Road, Suite 101, Lisle, Illinois 60532
 Tel. (630) 719-7570 · Fax (630) 719-7589

SCALE: 1"=30'
 DATE: 10/01/09
 DRAWN BY: BCD
 CHECKED BY: BDH

F.A.U. RTE.	SECTION	COUNTY	TOTAL SHEETS	SHEET NO.
2697	09-00089-00-RS	COOK	19	8
STA. 133+00		TO STA. 141+00		
ILLINOIS FED. AID PROJECT				

CONTRACT NO: 63372



HMA SC D N70 (2"), 237 TONS
 LEV BIND MM N70 (1 1/4"), 148 TONS
 HMA SURF REM 3 1/4", 1999 SY

LEGEND			
		EXISTING	PROPOSED
[A]	STRUCTURE TO BE ADJUSTED	[X]	VALVE VAULT
[R]	STRUCTURE TO BE RECONSTRUCTED	[O]	MANHOLE
[F]	FILLING EXISTING STRUCTURE	[C]	CATCH BASIN
[A]	STRUCTURE TO BE ADJUSTED WITH NEW FRAME & LID	[I]	INLET
[R]	STRUCTURE TO BE RECONSTRUCTED WITH NEW FRAME & LID	[F]	FIRE HYDRANT
[ASP]	STRUCTURE TO BE ADJUSTED SPECIAL	[*]	CURB RAMPS ACCESSIBLE TO THE DISABLED
[ASP]	STRUCTURE TO BE ADJUSTED SPECIAL WITH NEW FRAME AND LID	[HMA SURF REM]	HMA SURFACE REMOVAL-BUTT JOINT
[HMA SURF REM]	HMA SURFACE REMOVAL-OR DRIVEWAY PAVEMENT REMOVAL	[COMB CONCRETE CURB]	COMBINATION CONCRETE CURB AND GUTTER REMOVAL AND REPLACEMENT
[S]	SIDEWALK REMOVAL AND REPLACEMENT		

REVISIONS	
NAME	DATE

ILLINOIS DEPARTMENT OF TRANSPORTATION
 F.A.U. ROUTE 2697
 GILBERT AVENUE

PLAN SHEET

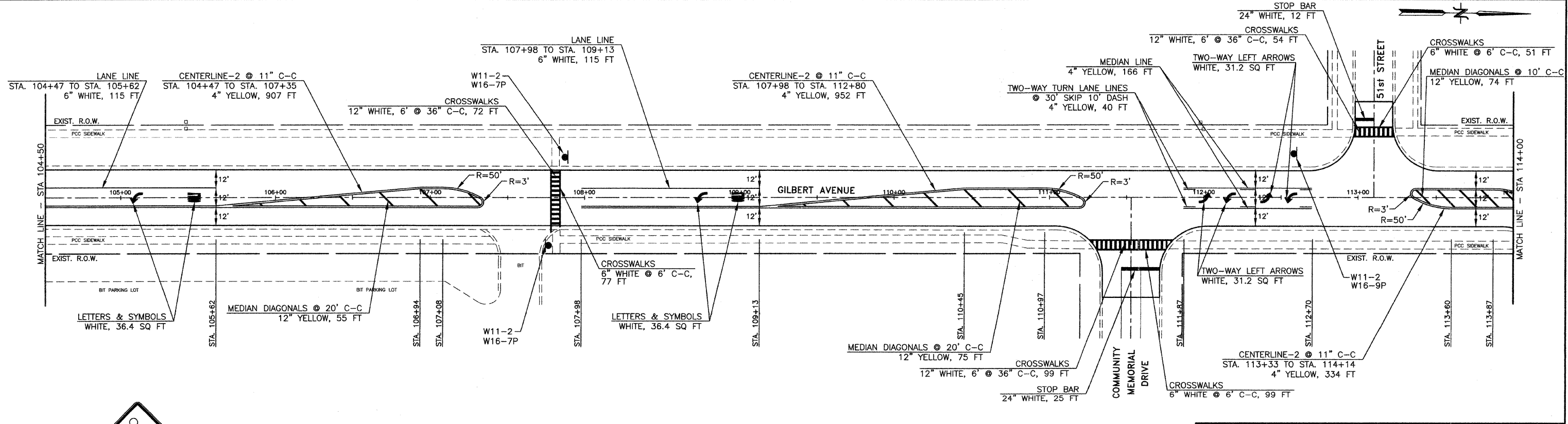
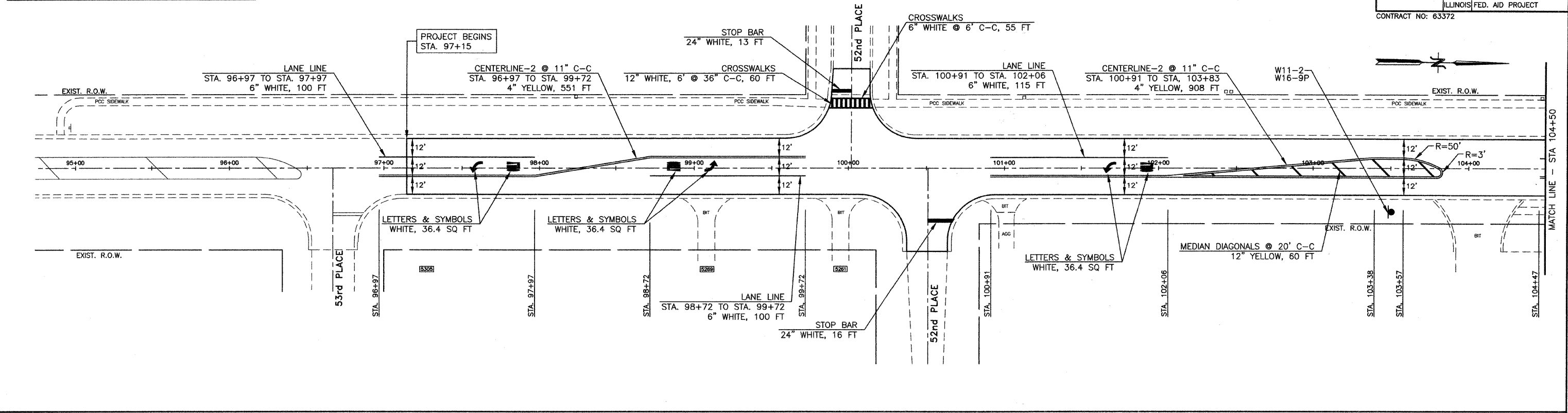
SCALE: 1"=30'
 DATE: 10/01/09

DRAWN BY: BCD
 CHECKED BY: BDH

JJB JAMES J. BENES & ASSOCIATES, INC.
 950 Warrenville Road, Suite 101, Lisle, Illinois 60532
 Tel. (630) 719-7570 • Fax (630) 719-7589

F.A.U. RTE.	SECTION	COUNTY	TOTAL SHEETS	SHEET NO.
269709-00089-00-RS		COOK	19	9
STA. 95+00 TO STA. 114+00		ILLINOIS FED. AID PROJECT		
CONTRACT NO: 63372				

NOTES:
1. ALL MARKINGS SHALL BE THERMOPLASTIC PAVEMENT MARKINGS.



W11-2
30"x30"



W16-7P
24"x12"



W16-9P
24"x12"

REVISIONS	
NAME	DATE

ILLINOIS DEPARTMENT OF TRANSPORTATION
F.A.U. ROUTE 2697
GILBERT AVENUE

PAVEMENT MARKING PLAN

SCALE: 1"=30'
DATE: 10/01/09

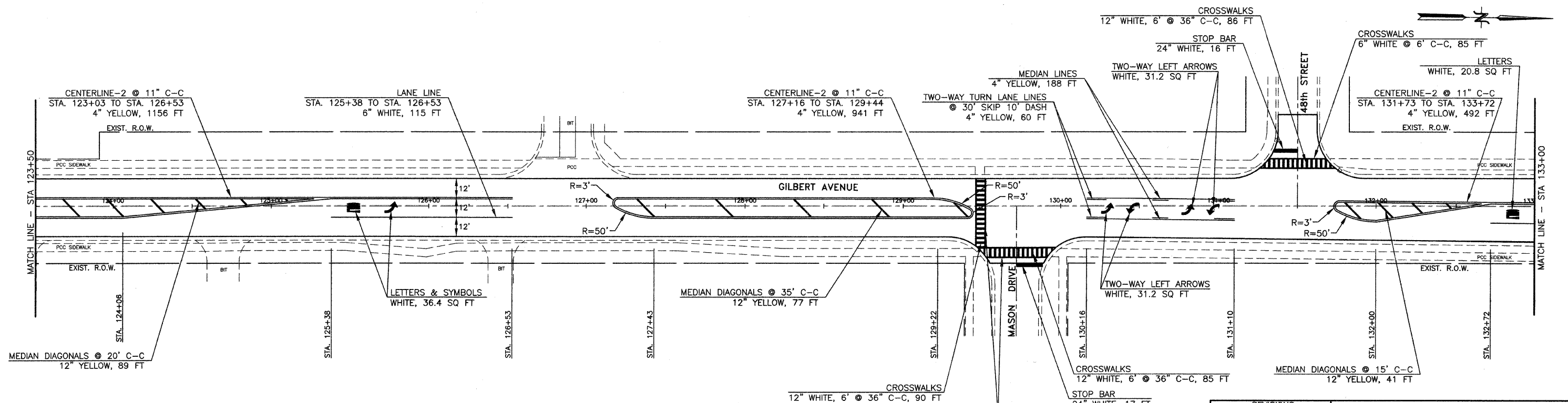
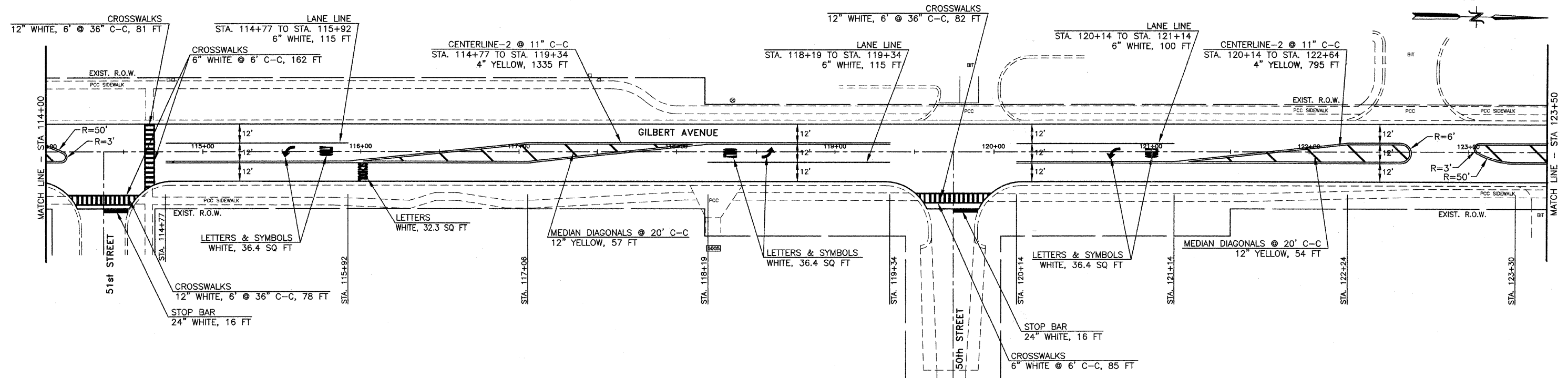
DRAWN BY: BCD
CHECKED BY: BDH



JAMES J. BENES & ASSOCIATES, INC.
950 Warrenville Road, Suite 101, Lisle, Illinois 60532
Tel. (630) 719-7570 • Fax (630) 719-7589

NOTES:
1. ALL MARKINGS SHALL BE THERMOPLASTIC PAVEMENT MARKINGS.

F.A.U. RTE.	SECTION	COUNTY	TOTAL SHEETS	SHEET NO.
2697	09-00089-00-RS	COOK	19	10
STA. 114+00 TO STA. 133+00		ILLINOIS FED. AID PROJECT		
CONTRACT NO: 63372				



REVISIONS	
NAME	DATE

ILLINOIS DEPARTMENT OF TRANSPORTATION
F.A.U. ROUTE 2697
GILBERT AVENUE

PAVEMENT MARKING PLAN

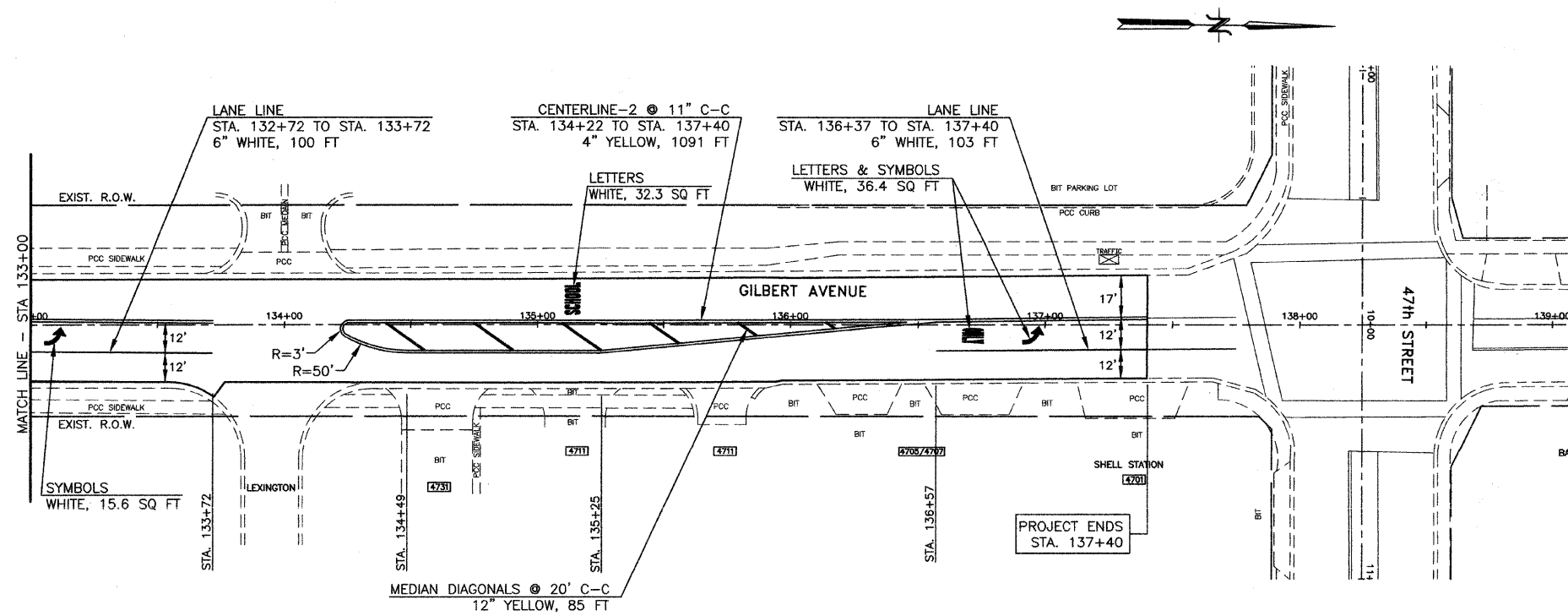
SCALE: 1"=30'
DATE: 10/01/09

DRAWN BY: BCD
CHECKED BY: BDH

JJB JAMES J. BENES & ASSOCIATES, INC.
950 Warrenville Road, Suite 101, Lisle, Illinois 60532
Tel. (630) 719-7570 · Fax (630) 719-7589

F.A.U. RTE.	SECTION	COUNTY	TOTAL SHEETS	SHEET NO.
2697	09-00089-00-RS	COOK	19	11
STA. 133+00		TO STA. 140+00		
ILLINOIS FED. AID PROJECT				
CONTRACT NO: 63372				

NOTES:
1. ALL MARKINGS SHALL BE THERMOPLASTIC PAVEMENT MARKINGS.



REVISIONS	
NAME	DATE

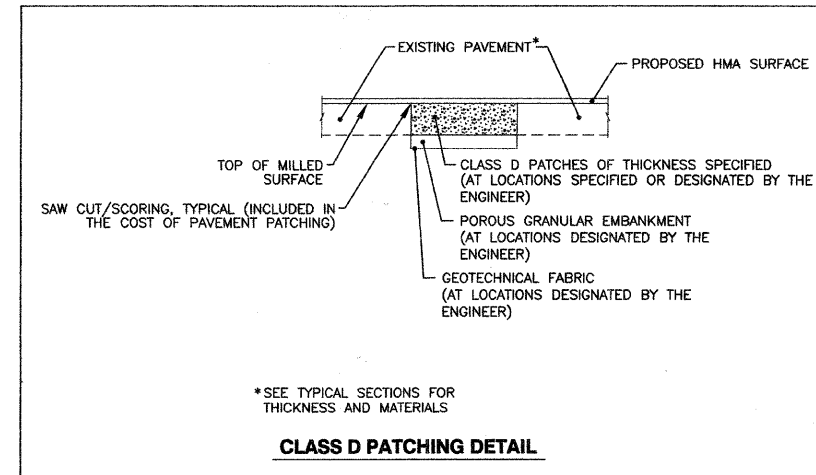
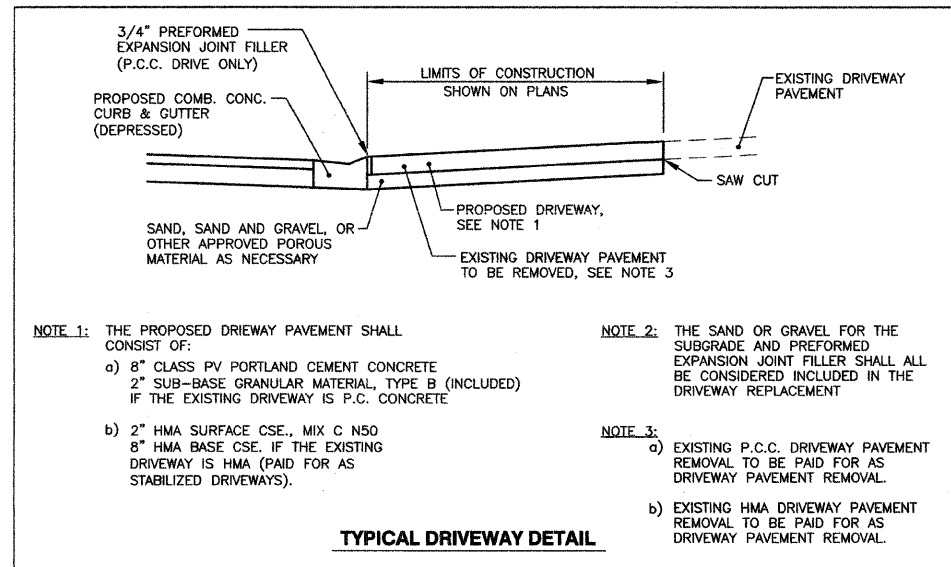
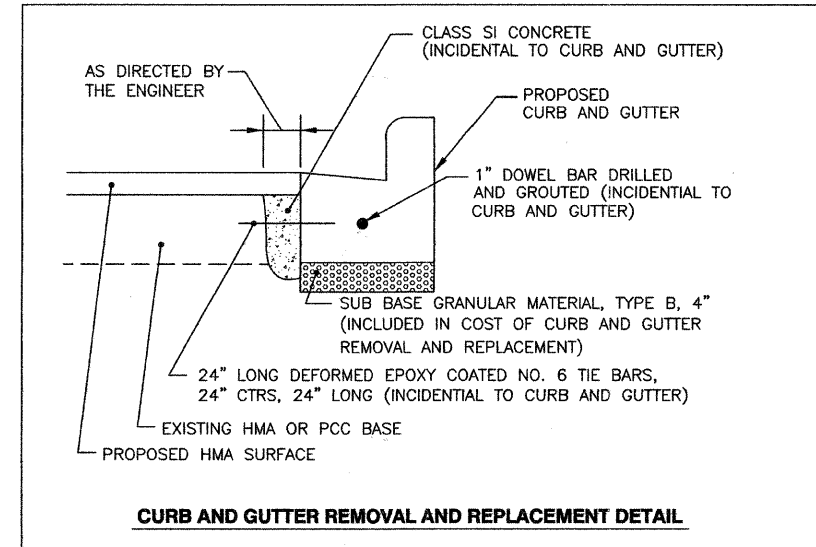
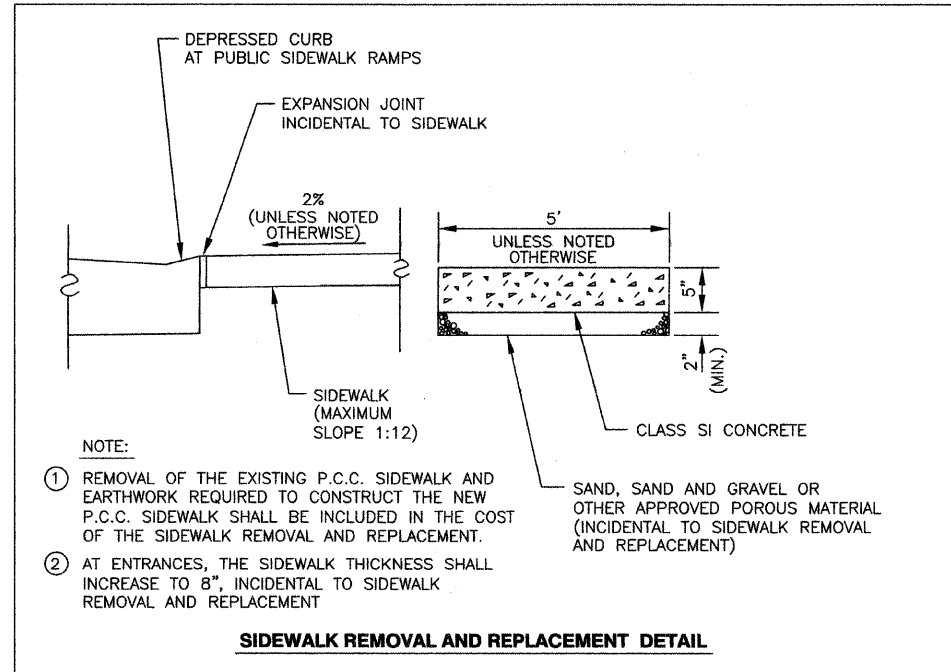
ILLINOIS DEPARTMENT OF TRANSPORTATION
F.A.U. ROUTE 2697
GILBERT AVENUE

PAVEMENT MARKING PLAN

JJB JAMES J. BENES & ASSOCIATES, INC.
950 Warrenville Road, Suite 101, Lisle, Illinois 60532
Tel. (630) 719-7570 • Fax (630) 719-7589

SCALE: 1"=30'
DATE: 10/01/09

DRAWN BY: BCD
CHECKED BY: BDH



REVISIONS	
NAME	DATE

ILLINOIS DEPARTMENT OF TRANSPORTATION
F.A.U. ROUTE 2697
GILBERT AVENUE

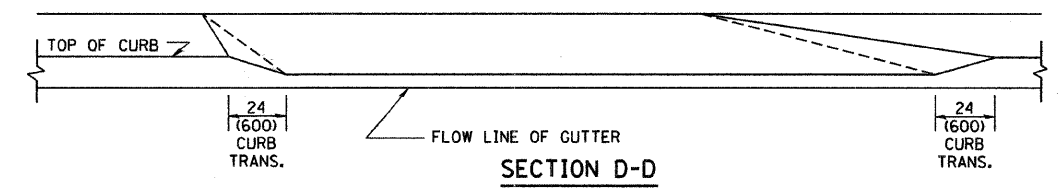
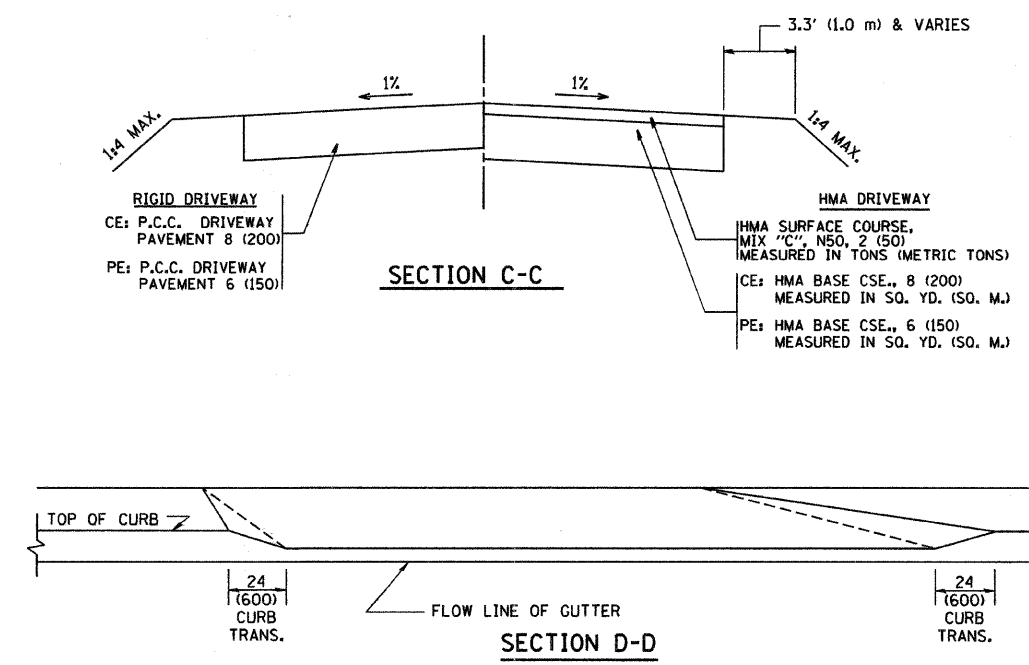
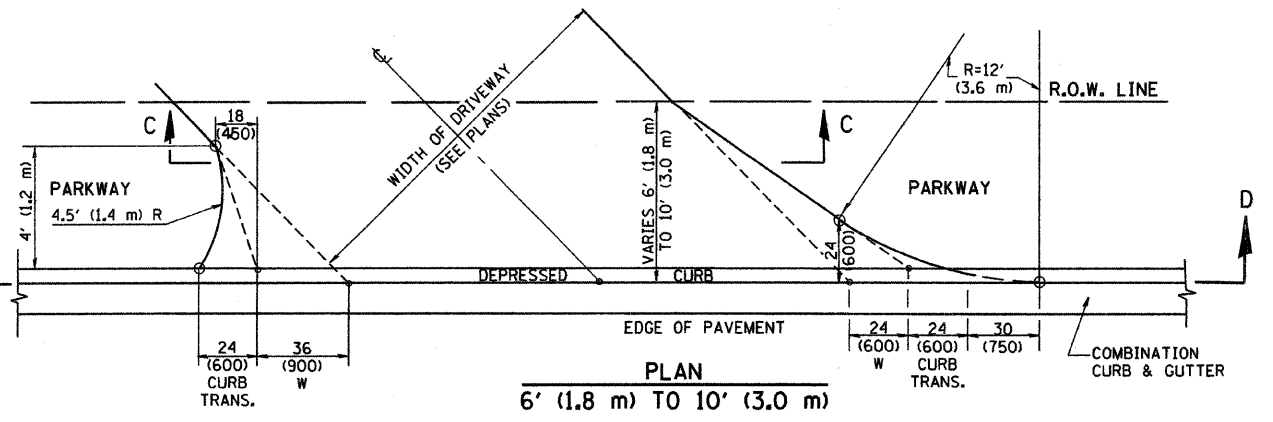
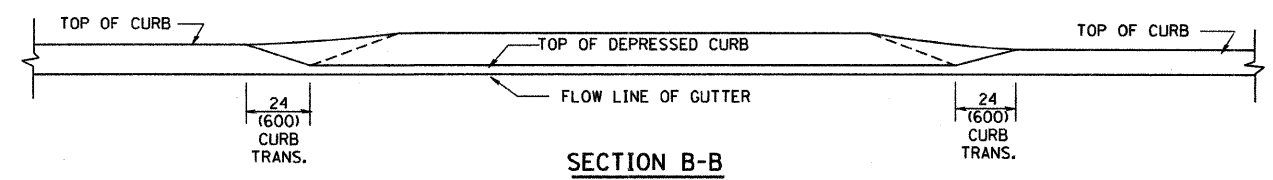
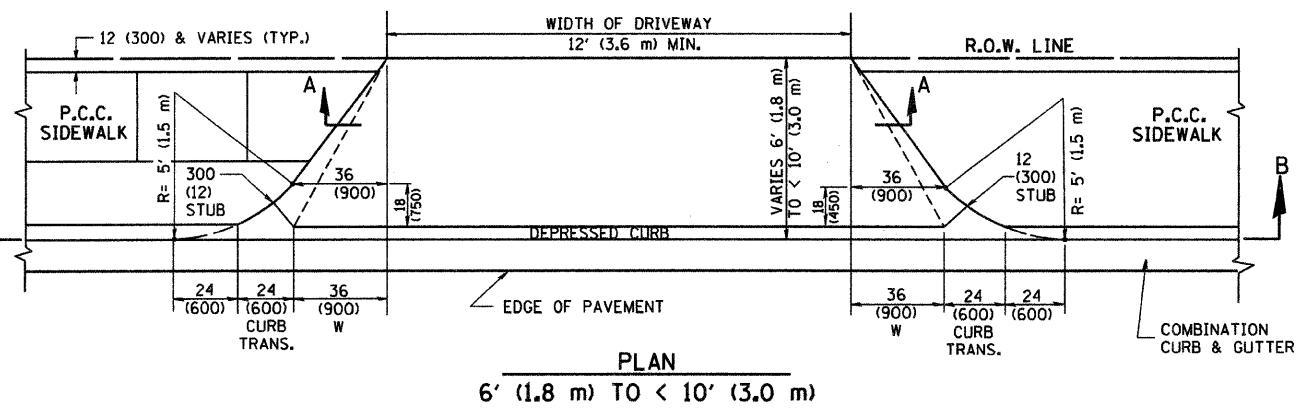
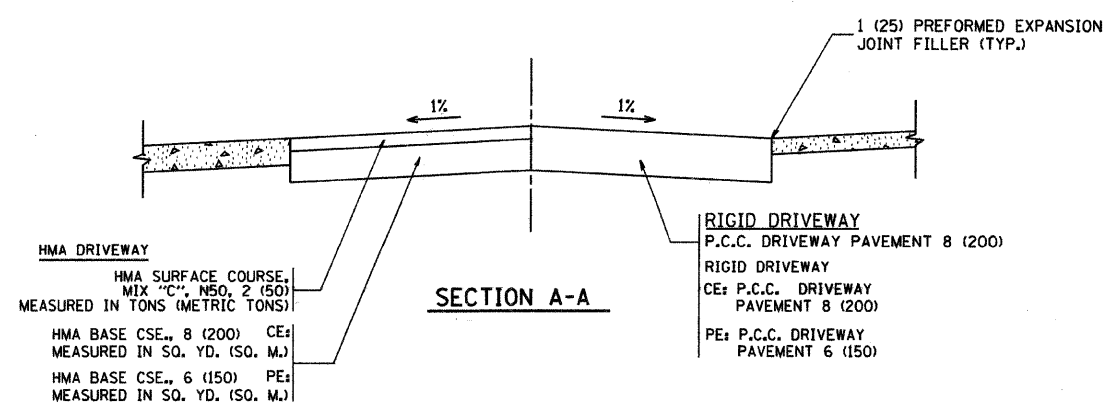
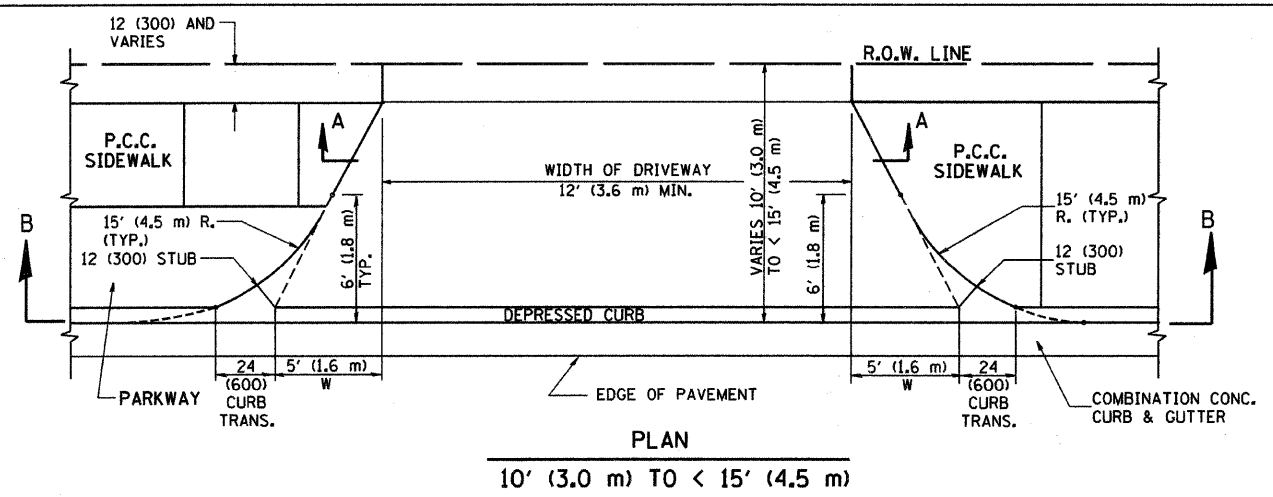
CONSTRUCTION DETAILS

SCALE: N/A
DATE: 10/01/09

DRAWN BY: SMP
CHECKED BY: BDH

JJB JAMES J. BENES & ASSOCIATES, INC.
950 Warrenville Road, Suite 101, Lisle, Illinois 60532
Tel. (630) 719-7570 • Fax (630) 719-7589

F.A.J. RTE.	SECTION	COUNTY	TOTAL SHEETS	SHEET NO.
2697	09-00089-00-RS	COOK	19	13
STA.		TO STA.		
FED. ROAD DIST. NO. 1 ILLINOIS FED. AID PROJECT				
CONTRACT NO. 63372				



GENERAL NOTES

DRIVEWAY SLOPES, LOCATIONS, & GEOMETRIC LAYOUT SHALL BE IN ACCORDANCE WITH THE LATEST EDITION OF THE "HANDBOOK FOR POLICY ON PERMITS FOR ACCESS DRIVEWAYS TO STATE HIGHWAYS". FOR FURTHER LAYOUT REQUIREMENTS, REFER TO ILLUSTRATION 10 IN THE PERMIT HANDBOOK. WHERE SIDEWALKS EXIST, DRIVEWAYS SHALL BE REPLACED WITH RIGID PAVEMENT. WHERE NO SIDEWALKS EXIST, DRIVEWAYS SHALL BE REPLACED IN KIND. SIDEWALK CROSS SLOPE THRU DRIVEWAY AREA TO BE A MAXIMUM OF 1:50.

WHEN THE DISTANCE BETWEEN R.O.W. AND THE BACK OF CURB IS EQUAL TO OR LESS THAN 8' (2.4 m), THE P.C.C. SIDEWALK SHALL EXTEND TO THE BACK OF CURB.

THE RESIDENT ENGINEER SHALL CONTACT THE TRAFFIC PERMIT OFFICE AT 847/ 705-4131 FOR ANY QUESTIONS ON DRIVEWAYS SHOWN IN THE PLANS, SPECIFICALLY IN REFERENCE TO ADDITIONAL AND/OR RELOCATION/REMOVAL OF A DRIVEWAY.

COMBINATION CONCRETE CURB & GUTTER SHALL BE MEASURED STRAIGHT ACROSS THE DRIVEWAY. NO ADDITIONAL COMPENSATION WILL BE ALLOWED FOR THE CURB & GUTTER TRANSITION.

THE 1 (25) PREFORMED EXPANSION JOINT FILLER WILL NOT BE PAID SEPARATELY, BUT SHALL BE CONSIDERED INCLUDED IN THE COST OF THE P.C.C. DRIVEWAY PAVEMENT OR P.C.C. SIDEWALK.

"W" VARIES FROM 36 (900) TO 5' (1.5 m) PROPORTIONAL TO THE LENGTH (L), FROM 6' (1.8 m) TO 10' (3 m).

ALL DIMENSIONS ARE IN INCHES (MILLIMETERS) UNLESS OTHERWISE NOTED.

REVISIONS	
NAME	DATE
R. SHAH	11/06/95
J. POLLASTRINI	08/12/96
J. POLLASTRINI	12/14/96
A. ABBAS	03/21/97
T. HOLTZ	04/08/97
M. GOMEZ	04/06/01
P. LOFLEUR	04/15/03
R. BORO	01/01/07

ILLINOIS DEPARTMENT OF TRANSPORTATION

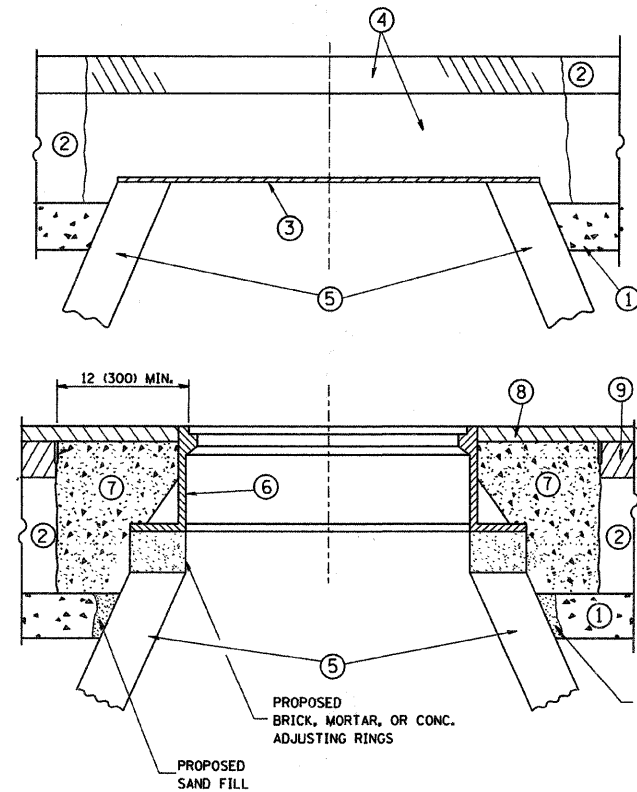
DRIVEWAY DETAILS
DISTANCE BETWEEN ROW AND FACE OF CURB < 15' (4.5 m)

SCALE: VERT. HORIZ.
DATE PLOTTED: 1/18/2007

DRAWN BY
CHECKED BY

PLOT DATE = 1/18/2007
PLOT SCALE = 3/8" = 1'-0"
USER NAME = dr-vehlogn

F.A.U. RTE.	SECTION	COUNTY	TOTAL SHEETS	SHEET NO.
2897	09-00089-00-RS	COOK	19	14
STA.		TO STA.		
FED. ROAD DIST. NO. 1 ILLINOIS FED. AID PROJECT				
CONTRACT NO. 63372				



CONSTRUCTION PROCEDURES

STAGE 1 (BEFORE PAVEMENT MILLING)

- A) REMOVE A MINIMUM OF 12 (300) OF THE PAVEMENT FROM AROUND THE STRUCTURE.
- B) REMOVE THE EXISTING FRAME AND LID FROM THE STRUCTURE.
- C) COVER THE STRUCTURE OPENING WITH A 36 (900) DIAMETER METAL PLATE.
- D) BACKFILL WITH CRUSHED STONE AND A MINIMUM 1/2 (40) THICK HMA SURFACE MIX APPROVED BY THE ENGINEER.

STAGE 2 (AFTER PAVEMENT MILLING)

- A) REMOVE THE HMA SURFACE MIX AND CRUSHED STONE.
- B) INSTALL THE FRAME AND LID; ADJUST THE FRAME TO ITS FINAL SURFACE ELEVATION.
- C) THE SURROUNDING SPACE SHALL BE FILLED WITH CLASS SI CONCRETE, OR HMA SURFACE COURSE OR HMA BINDER COURSE TO THE ELEVATION OF THE SURFACE OF THE EXISTING BASE COURSE OR THE BINDER COURSE.

THE PROCEDURE EXPLAINED ABOVE SHALL CONFORM TO THE APPLICABLE PORTIONS OF SECTIONS 353, 406, 602, AND 603 OF THE STANDARD SPECIFICATIONS.

LEGEND

- ① SUB-BASE GRANULAR MATERIAL
- ② EXISTING PAVEMENT
- ③ 36 (900) DIAMETER METAL PLATE
- ④ PROPOSED CRUSHED STONE AND HMA SURFACE MIX
- ⑤ EXISTING STRUCTURE
- ⑥ FRAME AND LID (SEE NOTES)
- ⑦ CLASS SI CONCRETE, HMA SURFACE COURSE OR HMA BINDER COURSE
- ⑧ PROPOSED HMA SURFACE COURSE
- ⑨ PROPOSED HMA BINDER COURSE

LOCATION OF STRUCTURES:

THE CONTRACTOR WILL BE REQUIRED TO KEEP A RECORD OF THE LOCATIONS OF THE BURIED STRUCTURES ACCORDING TO THE STATION AND DISTANCE LEFT OR RIGHT OF THE CENTERLINE OF PAVEMENT. UPON COMPLETION OF THE WORK, THE CONTRACTOR WILL DELIVER THE RECORD TO THE ENGINEER.

BASIS OF PAYMENT: THIS WORK WILL BE PAID FOR AT THE CONTRACT UNIT PRICE PER EACH FOR "FRAMES AND LIDS TO BE ADJUSTED, SPECIAL"
NEW FRAMES AND LIDS, WHEN SPECIFIED, WILL BE PAID FOR SEPARATELY.

NOTES:

- EXISTING BROKEN FRAMES AND LIDS SHALL BE REMOVED AND DISPOSED OF BY THE CONTRACTOR AND SHALL BE REPLACED AS DIRECTED BY THE ENGINEER. REPLACEMENT FRAMES AND LIDS WILL BE PAID FOR IN ACCORDANCE WITH ARTICLE 109.04 OF THE STANDARD SPECIFICATIONS UNLESS A SEPARATE PAY ITEM HAS BEEN PROVIDED.
- IF THE EXISTING LIDS ARE OPEN, THE FRAME WILL BE ADJUSTED TO THE ELEVATION OF THE MILLED PAVEMENT SURFACE PRIOR TO THE MILLING OPERATION. THE FRAME WILL NOT BE REMOVED AND COVERED BY THE METAL PLATE.
- CITY OF CHICAGO CASTINGS ARE THE PROPERTY OF THE CITY AND THE CONTRACTOR SHALL NOTIFY THE CITY FOR REMOVAL AND DISPOSITION OF THE CASTINGS.
- THE METAL PLATE USED TO COVER THE STRUCTURE SHALL REMAIN THE PROPERTY OF THE CONTRACTOR.
- WHEN STRUCTURES ARE TO BE ADJUSTED OR RECONSTRUCTED, THE LOWERING AND RAISING OF THE FRAMES AND LIDS WILL NOT BE PAID FOR SEPARATELY BUT WILL BE INCLUDED IN THE COST OF THE CORRESPONDING PAY ITEM.

DETAILS FOR FRAMES AND LIDS ADJUSTMENT WITH MILLING

ALL DIMENSIONS ARE IN INCHES (MILLIMETERS) UNLESS OTHERWISE SHOWN

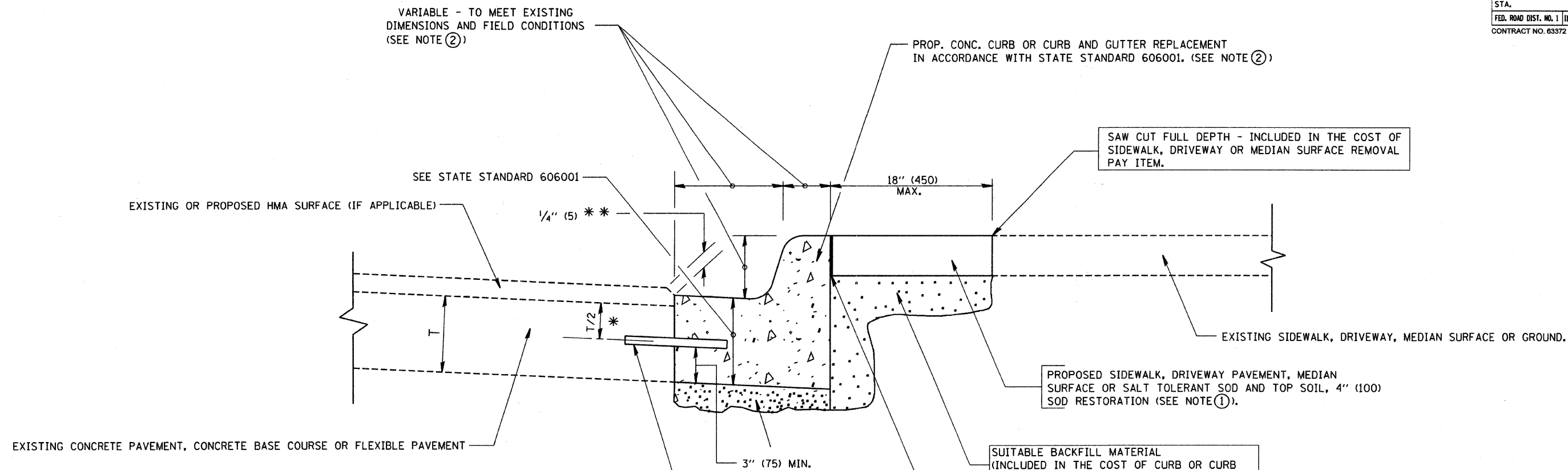
REVISIONS	
NAME	DATE
R. SHAH	10/25/94
R. SHAH	01/30/95
R. SHAH	03/10/95
A. ABBAS	03/21/97
R. WIEDEMAN	05/14/04
R. BORO	01/01/07

ILLINOIS DEPARTMENT OF TRANSPORTATION
DETAILS FOR FRAMES AND LIDS ADJUSTMENT WITH MILLING

SCALE: VERT. NONE
HORIZ. NONE
DRAWN BY
CHECKED BY
BD600-03 (BD-8)

PLOT DATE = 2/12/2007
PLOT SCALE = 50.0000 / IN.
USER NAME = bbornd

F.A.J. RTE.	SECTION	COUNTY	TOTAL SHEETS	SHEET NO.
2697	09-00089-00-RS	COOK	19	15
STA.		TO STA.		
FED. ROAD DIST. NO. 1		ILLINOIS	FED. AID PROJECT	
CONTRACT NO. 63372				



- * 3" (75) MINIMUM FROM TOP AND BOTTOM OF THE CONCRETE PAVEMENT OR BASE COURSE.
 - ** IF THE FINAL SURFACE OF THE PAVEMENT IS CONCRETE, THE GUTTER IS TO BE FLUSH WITH THE PAVEMENT.
- NOTE: ① SIDEWALK, DRIVEWAY PAVEMENT OR MEDIAN SURFACE SHALL BE SIMILAR TO THE MATERIAL BEING REMOVED AND WILL BE PAID FOR SEPARATELY.
- SALT TOLERANT SOD AND TOP SOIL, 4" (100) RESTORATION WILL NOT BE PAID FOR SEPARATELY, BUT SHALL BE INCLUDED IN THE COST OF CURB OR CURB AND GUTTER REMOVAL AND REPLACEMENT.
- ② CURB OR CURB AND GUTTER REPLACEMENT SHALL MATCH THE SHAPE OF THE EXISTING CURB OR CURB AND GUTTER UNLESS OTHERWISE SPECIFIED.
 - ③ FOR CURB OR CURB AND GUTTER REMOVAL AND REPLACEMENT ADJACENT TO FLEXIBLE PAVEMENT DELETE EPOXY COATED TIE BARS.
 - ④ LONGITUDINAL BARS, IF ENCOUNTERED IN THE EXISTING CURB OR CURB AND GUTTER, ARE NOT TO BE REPLACED. CUTTING AND REMOVING LONGITUDINAL BARS SHALL BE INCLUDED IN THE COST OF CURB OR CURB AND GUTTER REMOVAL AND REPLACEMENT.
 - ⑤ THE COST OF HMA SURFACE REMOVAL IN THE EXISTING GUTTER FLAG SHALL BE INCLUDED IN THE COST OF THE CURB AND GUTTER REMOVAL AND REPLACEMENT.
 - ⑥ THE REMOVAL AND REPLACEMENT OF THE EXISTING CURB OR CURB AND GUTTER SHALL BE DONE IN ACCORDANCE WITH THE APPLICABLE PORTIONS OF SECTION 440 AND 606 OF THE STANDARD SPECIFICATIONS.
 - ⑦ THE LOCATIONS OF REMOVAL AND REPLACEMENT OF EXISTING CURB OR CURB AND GUTTER SHALL BE DETERMINED BY THE RESIDENT ENGINEER AT THE TIME OF CONSTRUCTION.

- PROPOSED CONC. CURB OR CURB AND GUTTER REPLACEMENT IN ACCORDANCE WITH STATE STANDARD 606001. (SEE NOTE ②)
- SAW CUT FULL DEPTH - INCLUDED IN THE COST OF SIDEWALK, DRIVEWAY OR MEDIAN SURFACE REMOVAL PAY ITEM.
- EXISTING SIDEWALK, DRIVEWAY, MEDIAN SURFACE OR GROUND.
- PROPOSED SIDEWALK, DRIVEWAY PAVEMENT, MEDIAN SURFACE OR SALT TOLERANT SOD AND TOP SOIL, 4" (100) SOD RESTORATION (SEE NOTE ①).
- SUITABLE BACKFILL MATERIAL (INCLUDED IN THE COST OF CURB OR CURB AND GUTTER REMOVAL AND REPLACEMENT)
- PROPOSED 3/4" (20) PREFORMED EXPANSION JOINT AT CONCRETE SIDEWALKS, DRIVEWAYS, AND MEDIANS. (INCLUDED IN THE COST OF CURB OR CURB AND GUTTER REMOVAL AND REPLACEMENT.)
- UNSUITABLE SUB-BASE MATERIAL TO BE REMOVED, IF DIRECTED BY THE ENGINEER, SHALL BE REPLACED WITH EITHER SUB-BASE GRANULAR MATERIAL, TYPE B OR ADDITIONAL THICKNESS OF CONCRETE.
- REMOVAL AND REPLACEMENT 4" (100) OR LESS IS INCLUDED IN THE COST OF CURB OR CURB AND GUTTER REMOVAL AND REPLACEMENT.
- REMOVAL AND REPLACEMENT IN EXCESS OF 4" (100) WILL BE PAID FOR IN ACCORDANCE WITH ARTICLE 109.04 OF THE STANDARD SPECIFICATIONS.
- PROPOSED #6 (20) EPOXY COATED TIE BARS 24" (600) LONG AT 24" (600) CENTERS WILL NOT BE PAID FOR SEPARATELY. DELETE EPOXY COATED TIE BARS IF EXISTING TIE BARS ARE USUABLE AS DETERMINED BY THE ENGINEER. (SEE NOTE ③).

BASIS OF PAYMENT:
 THIS WORK WILL BE PAID FOR AT THE CONTRACT UNIT PRICE PER FOOT (METER) FOR "CURB REMOVAL AND REPLACEMENT" OR "COMBINATION CONCRETE CURB AND GUTTER REMOVAL AND REPLACEMENT".

ALL DIMENSIONS ARE IN INCHES (MILLIMETERS) UNLESS OTHERWISE SHOWN.

CURB OR CURB AND GUTTER REMOVAL AND REPLACEMENT

REVISIONS	
NAME	DATE
A. HOUSEH	03/11/94
R. SHAH	02/24/96
R. SHAH	03/02/96
R. SHAH	08/19/96
R. SHAH	09/12/96
R. SHAH	09/19/96
R. SHAH	10/03/96
A. ABBAS	03/21/97
M. GOMEZ	01/22/01
R. BORO	01/01/07

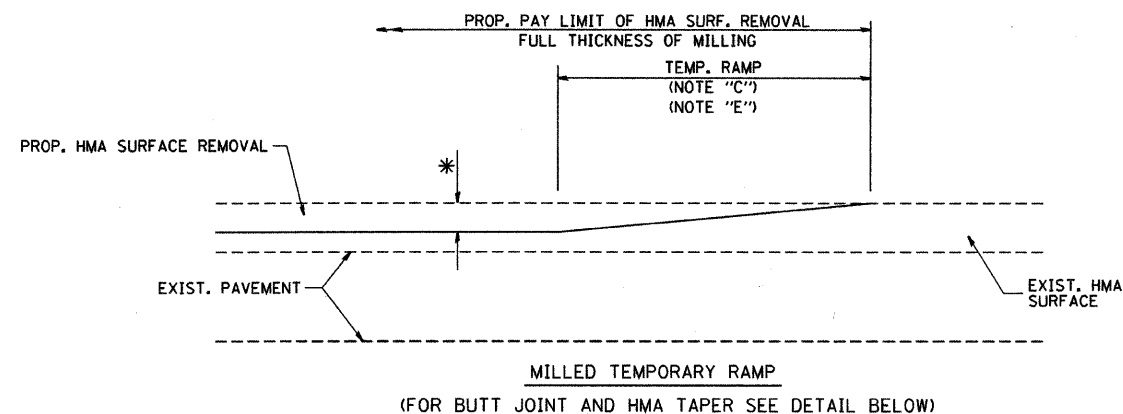
ILLINOIS DEPARTMENT OF TRANSPORTATION

CURB OR CURB AND GUTTER REMOVAL AND REPLACEMENT

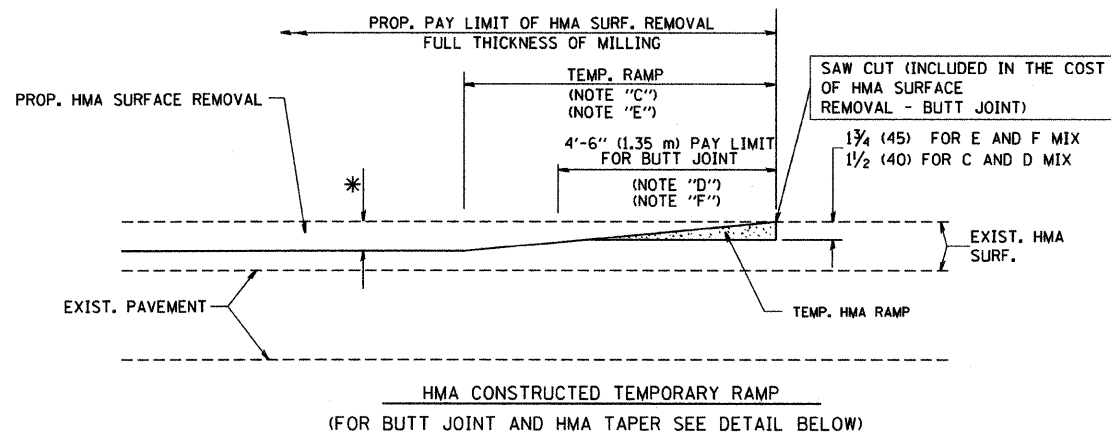
SCALE: VERT. NONE
 HORIZ. DRAWN BY
 CHECKED BY
 BD600-06 (BD-24)

PLOT DATE = 3/2/2007
 PLOT SCALE = 80.000%
 USER NAME = bauer.dl

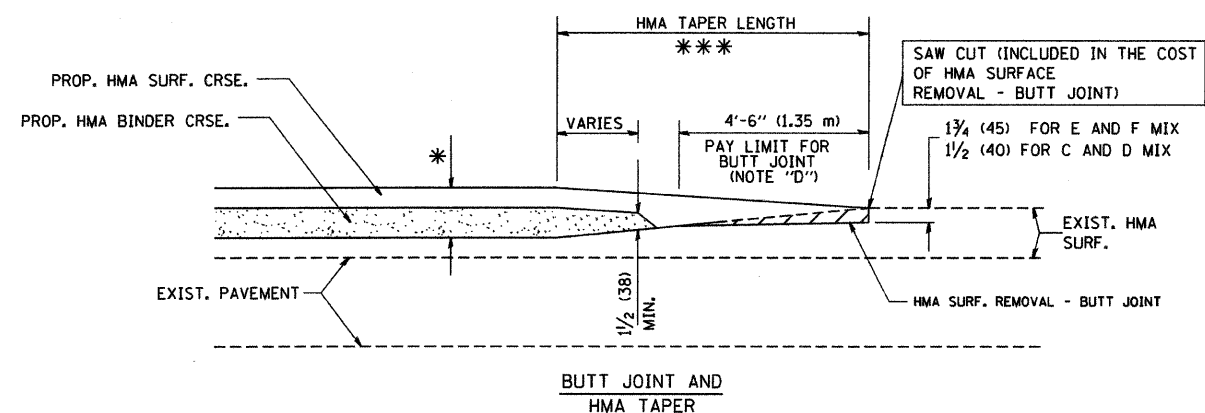
F.A.U. RTE.	SECTION	COUNTY	TOTAL SHEETS	SHEET NO.
2697	09-00089-00-RS	COOK	19	16
STA.		TO STA.		
FED. ROAD DIST. NO. 1 ILLINOIS FED. AID PROJECT				
CONTRACT NO. 63372				



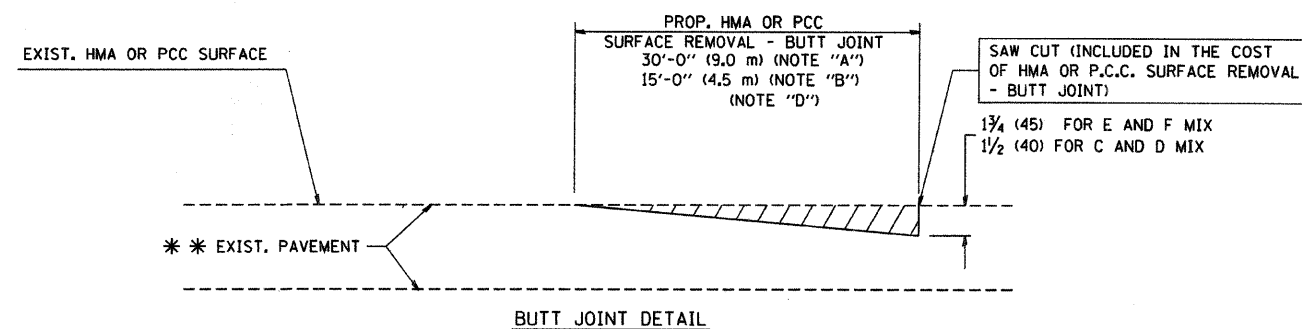
OPTION 1



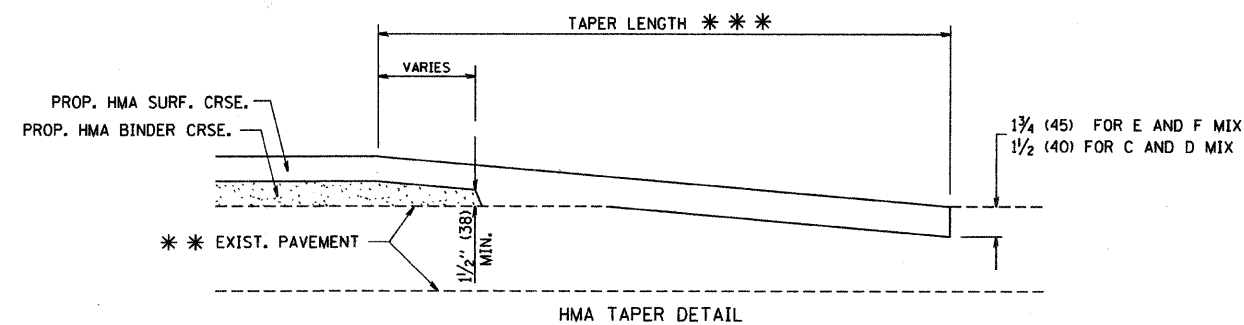
OPTION 2
TYPICAL TEMPORARY RAMP



TYPICAL BUTT JOINT AND HMA TAPER FOR MILLING AND RESURFACING



BUTT JOINT DETAIL



HMA TAPER DETAIL

TYPICAL BUTT JOINT AND HMA TAPER FOR RESURFACING ONLY

*** PC CONCRETE, HMA OR HMA RESURFACED PAVEMENT.

NOTES

- A: MAINLINE ROADWAYS AND MAJOR SIDE ROADS.
- B: MINOR SIDE ROADS.
- C: THE TEMP. RAMP SHALL BE CONSTRUCTED IMMEDIATELY UPON REMOVAL OF THE EXISTING HMA SURFACE.
- D: THE BUTT JOINT SHALL BE CONSTRUCTED IMMEDIATELY PRIOR TO PLACING THE PROPOSED HMA COURSES.
- E: TAPER THE TEMP. RAMP AT A RATE OF 3'-0" (900 mm) PER 1 INCH (25 mm) OF MILLING THICKNESS.
- F: INSTALLATION AND REMOVAL OF THE 4'-6" (1.35 m) TEMP. RAMP IS INCLUDED IN COST OF HMA SURFACE REMOVAL - BUTT JOINT
- G: SEE ARTICLE 406.08 AND 406.14 OF THE STANDARD SPECIFICATIONS FOR "HMA AND/OR PCC SURFACE REMOVAL, BUTT JOINT".
- * SEE TYPICAL SECTIONS FOR MILLING THICKNESS.

*** 20'-0" (6.1 m) PER 1 (25) RESURFACING (NOTE "A")
10'-0" (3.0 m) PER 1 (25) RESURFACING (NOTE "B")

ALL DIMENSIONS ARE IN INCHES (MILLIMETERS) UNLESS OTHERWISE SHOWN.

BASIS OF PAYMENT:

THE BUTT JOINT WILL BE PAID FOR AT THE CONTRACT UNIT PRICE PER SQUARE YARD (SQUARE METER) FOR "HOT-MIX ASPHALT SURFACE REMOVAL - BUTT JOINT" OR FOR "PORTLAND CEMENT CONCRETE SURFACE REMOVAL - BUTT JOINT".

REVISIONS	
NAME	DATE
M. DE YONG	6-13-90
M. DE YONG	7-3-90
M. DE YONG	3-27-92
R. SHAH	09/09/94
R. SHAH	10/25/94
A. ABBAS	03/21/97
M. GOMEZ	04/06/01
R. BORO	01/01/07

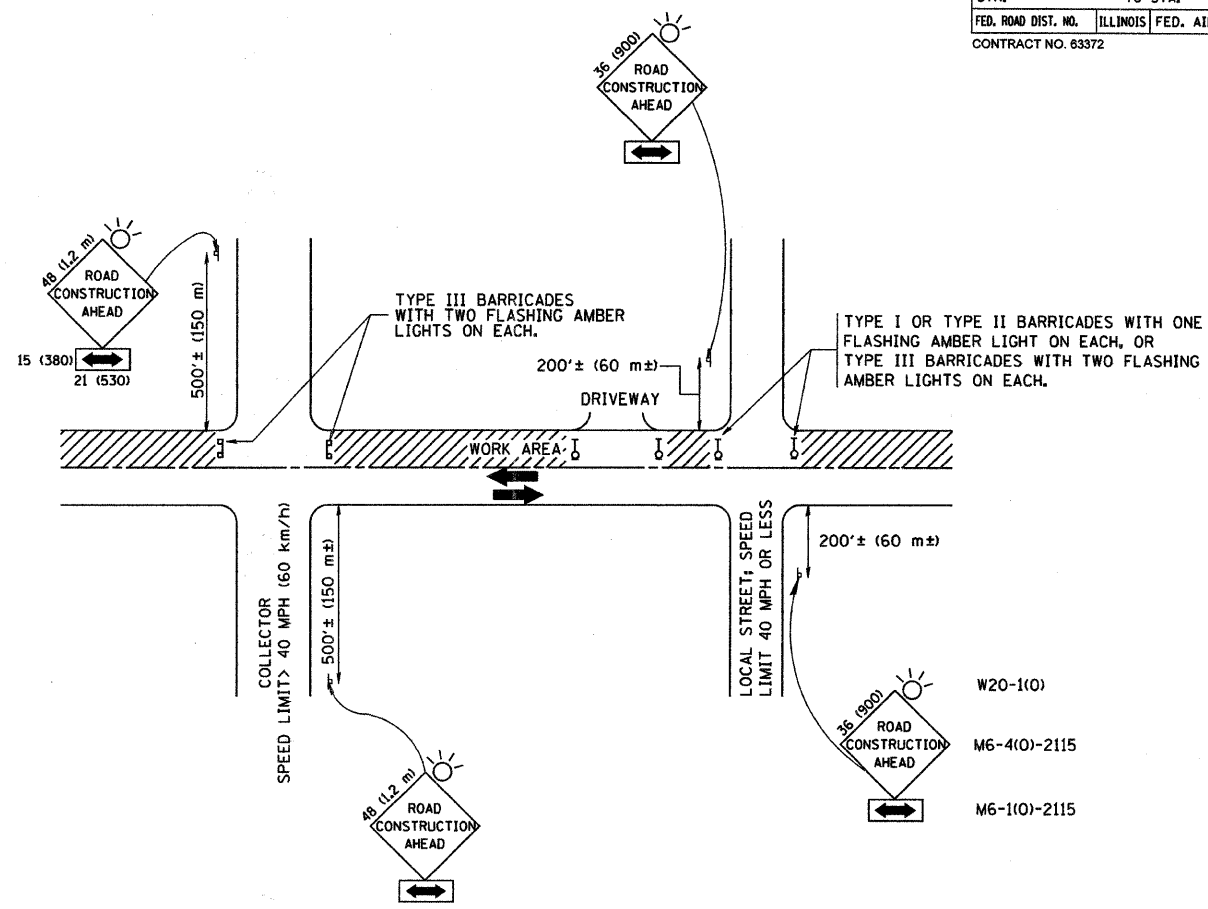
ILLINOIS DEPARTMENT OF TRANSPORTATION

BUTT JOINT AND HMA TAPER DETAILS

SCALE: VERT. NONE
HORIZ.

DRAWN BY
CHECKED BY

F.A.U. RTE.	SECTION	COUNTY	TOTAL SHEETS	SHEET NO.
2897	09-00089-00-RS	COOK	19	17
STA.		TO STA.		
FED. ROAD DIST. NO.		ILLINOIS FED. AID PROJECT		
CONTRACT NO. 63372				



TRAFFIC CONTROL AND PROTECTION FOR SIDE ROADS, INTERSECTIONS, AND DRIVEWAYS

NOTES:

- A. FOR NO LANE RESTRICTION ON THE SIDE ROAD OR DRIVEWAYS:
 1. SIDE ROAD WITH A SPEED LIMIT OF 40 MPH (60 km/h) OR LESS AS SHOWN ON THE DRAWING AND AS DIRECTED BY THE ENGINEER:
 - a) ONE ROAD CONSTRUCTION AHEAD SIGN 36 x 36 (900x900) WITH A FLASHER AND FLAG MOUNTED ON IT APPROXIMATELY 200' (60 m) IN ADVANCE OF THE MAIN ROUTE.
 - b) THE CLOSED PORTION OF THE MAIN ROUTE SHALL BE PROTECTED BY BLOCKING WITH TYPE I, TYPE II OR TYPE III BARRICADES, 1/3 OF THE CROSS SECTION OF THE CLOSED PORTION.
 2. SIDE ROAD WITH A SPEED LIMIT GREATER THAN 40 MPH (60 km/h) AS SHOWN ON THE DRAWING AND AS DIRECTED BY THE ENGINEER:
 - a) ONE ROAD CONSTRUCTION AHEAD SIGN 48 x 48 (1.2 m x 1.2 m) WITH A FLASHER MOUNTED ON IT APPROXIMATELY 500' (150 m) IN ADVANCE OF THE MAIN ROUTE.
 - b) THE CLOSED PORTION OF THE MAIN ROUTE SHALL BE PROTECTED BY BLOCKING WITH TYPE III BARRICADES, 1/2 OF THE CROSS SECTION OF THE CLOSED PORTION.
 3. WHEN THE SIDE ROAD LIES BETWEEN THE BEGINNING OF THE MAINLINE SIGNING AND THE WORK ZONE, A SINGLE HEADED ARROW (M6-1) SHALL BE USED IN LIEU OF THE DOUBLE HEADED ARROW (M6-4).
- B. FOR A LANE CLOSURE ON A SIDE ROAD OR DRIVEWAY:
 - USE APPLICABLE PORTIONS OF THE TYPICAL APPLICATION OF TRAFFIC CONTROL DEVICES (STD. 701501, STD. 701606 OR THE APPROPRIATE STANDARD). THE SPACING OF SIGNS AND BARRICADES SHALL BE ADJUSTED FOR FIELD CONDITIONS AS DIRECTED BY THE ENGINEER. THE DIRECTIONAL ARROW SHALL BE COVERED OR REMOVED WHEN NO LONGER CONSISTENT WITH THE SIDE ROAD LANE CLOSURE.
 - C. ADVANCE WARNING SIGNS ARE TO BE OMITTED ON DRIVEWAY UNLESS OTHERWISE NOTED.
 - D. THE TRAFFIC CONTROL AND PROTECTION FOR SIDE ROADS, INTERSECTIONS, AND DRIVEWAYS SHALL BE INCIDENTAL TO THE COST OF SPECIFIED TRAFFIC CONTROL STANDARDS OR ITEMS.

All dimensions are in millimeters (inches) unless otherwise shown.

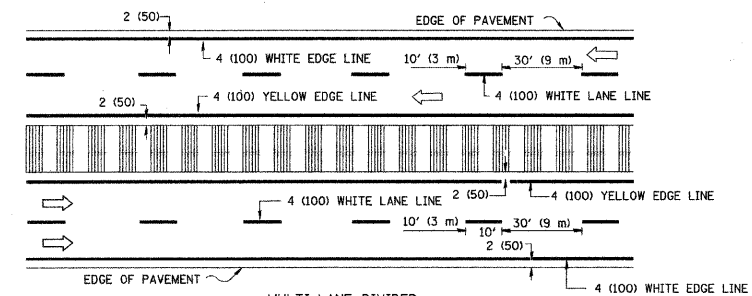
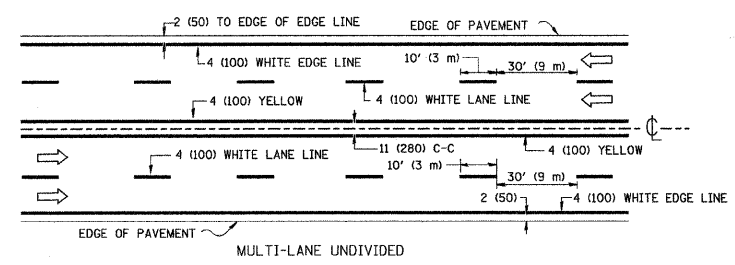
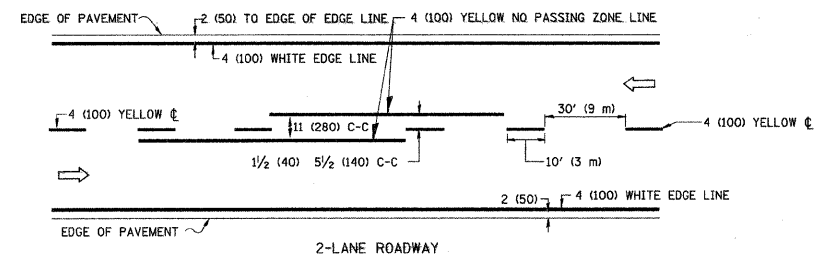
REVISIONS	
NAME	DATE
LHA	6/89
T. RAMMACHER	09/08/94
J. OBERLE	10/18/95
A. HOUSEH	03/06/96
A. HOUSEH	10/15/96
T. RAMMACHER	01/06/00

ILLINOIS DEPARTMENT OF TRANSPORTATION
 TRAFFIC CONTROL AND PROTECTION FOR
 SIDE ROADS, INTERSECTIONS, AND
 DRIVEWAYS

SCALE: NONE
 DRAWN BY
 CHECKED BY

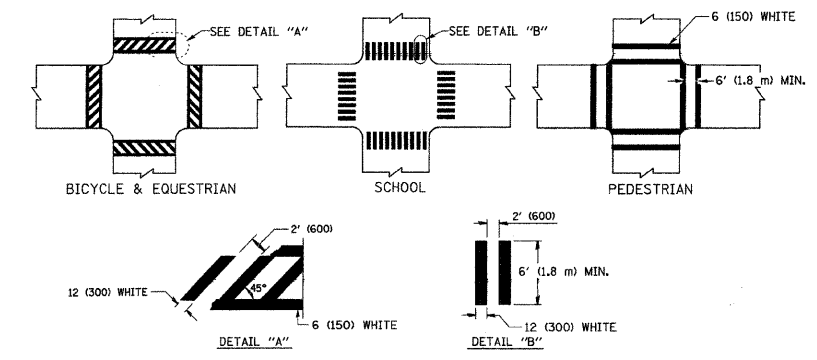
PLOT DATE = 2/6/2007
 PLOT SCALE = 1/8"=1'-0"
 USER NAME = bboer-dl

F.A.A.J. RTE.	SECTION	COUNTY	TOTAL SHEETS	SHEET NO.
2897	09-00089-00-RS	COOK	19	18
STA.		TO STA.		
FED. ROAD DIST. NO.		ILLINOIS		FED. AID PROJECT
CONTRACT NO. 63372				

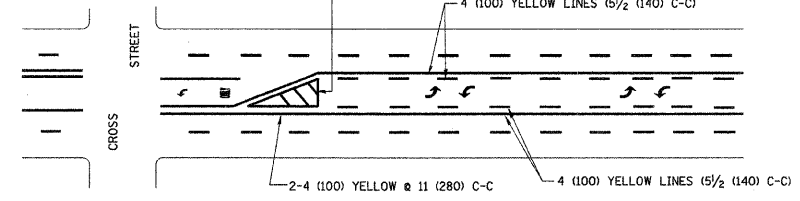
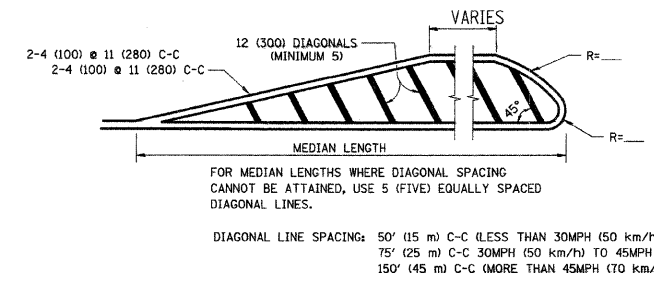
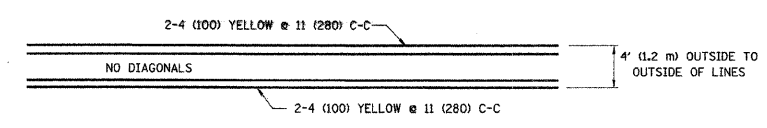


NOTE: MEDIANS WITH BARRIER CURB DO NOT REQUIRE AN EDGE LINE

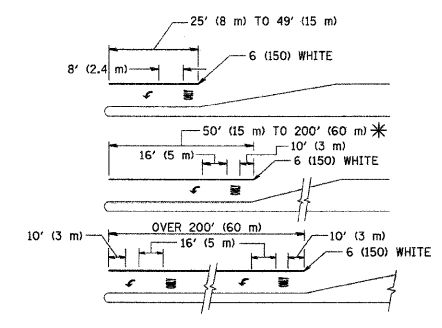
TYPICAL LANE AND EDGE LINE MARKING



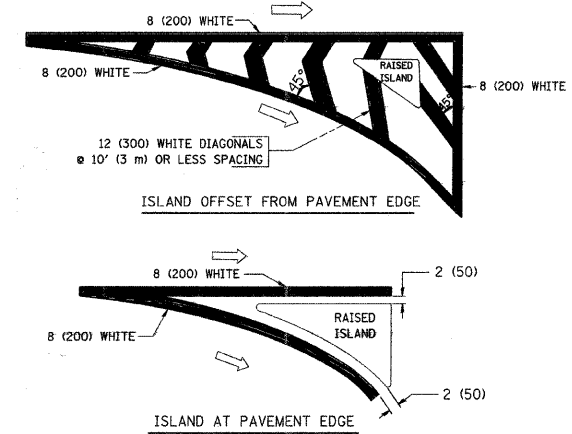
TYPICAL CROSSWALK MARKING



TYPICAL PAINTED MEDIAN MARKING



TYPICAL TURN LANE MARKING



TYPICAL ISLAND MARKING

TYPE OF MARKING	WIDTH OF LINE	PATTERN	COLOR	SPACING / REMARKS
CENTERLINE ON 2 LANE PAVEMENT	4 (100)	SKIP-DASH	YELLOW	10' (3 m) LINE WITH 30' (9 m) SPACE
CENTERLINE ON MULTI-LANE UNDIVIDED PAVEMENT	2 @ 4 (100)	SOLID	YELLOW	11 (280) C-C
NO PASSING ZONE LINES: FOR ONE DIRECTION FOR BOTH DIRECTIONS	4 (100) 2 @ 4 (100)	SOLID SOLID	YELLOW YELLOW	5 1/2 (140) C-C FROM SKIP-DASH CENTERLINE 11 (280) C-C OMIT SKIP-DASH CENTERLINE BETWEEN
LANE LINES	4 (100) 5 (125) ON FREEWAYS	SKIP-DASH SKIP-DASH	WHITE WHITE	10' (3 m) LINE WITH 30' (9 m) SPACE
DOTTED LINES (EXTENSIONS OF CENTER, LANE OR TURN LANE MARKINGS)	SAME AS LINE BEING EXTENDED	SKIP-DASH	SAME AS LINE BEING EXTENDED	2' (600) LINE WITH 6' (1.8 m) SPACE
EDGE LINES	4 (100)	SOLID	YELLOW-LEFT WHITE-RIGHT	OUTLINE MOUNTABLE MEDIANS IN YELLOW; EDGE LINES ARE NOT USED NEXT TO BARRIER CURB
TURN LANE MARKINGS	6 (150) LINE; FULL SIZE LETTERS & SYMBOLS (8' (2.4m))	SOLID	WHITE	SEE TYPICAL TURN LANE MARKING DETAIL
TWO WAY LEFT TURN MARKING	2 @ 4 (100) EACH DIRECTION 8' (2.4m) LEFT ARROW	SKIP-DASH AND SOLID IN PAIRS	YELLOW WHITE	10' (3 m) LINE WITH 30' (9 m) SPACE FOR SKIP-DASH; 5 1/2 (140) C-C BETWEEN SOLID LINE AND SKIP-DASH LINE SEE TYPICAL TWO-WAY LEFT TURN MARKING DETAIL
CROSSWALK LINES (PEDESTRIAN) A. DIAGONALS (BIKE & EQUESTRIAN) B. LONGITUDINAL BARS (SCHOOL)	2 @ 6 (150) 12 (300) @ 45° 12 (300) @ 90°	SOLID SOLID SOLID	WHITE WHITE WHITE	NOT LESS THAN 6' (1.8 m) APART 2' (600) APART 2' (600) APART SEE TYPICAL CROSSWALK MARKING DETAILS.
STOP LINES	24 (600)	SOLID	WHITE	PLACE 4' (1.2 m) IN ADVANCE OF AND PARALLEL TO CROSSWALK, IF PRESENT, OTHERWISE, PLACE AT DESIRED STOPPING POINT. PARALLEL TO CROSSROAD CENTERLINE, WHERE POSSIBLE
PAINTED MEDIANS	2 @ 4 (100) WITH 12 (300) DIAGONALS @ 45° NO DIAGONALS USED FOR 4' (1.2 m) WIDE MEDIANS	SOLID	YELLOW; TWO WAY TRAFFIC WHITE; ONE WAY TRAFFIC	11 (280) C-C FOR THE DOUBLE LINE SEE TYPICAL PAINTED MEDIAN MARKING.
CORE MARKING AND CHANNELIZING LINES	8 (200) WITH 12 (300) DIAGONALS @ 45°	SOLID	WHITE	DIAGONALS: 15' (4.5 m) C-C (LESS THAN 30MPH (50 km/h)) 20' (6 m) C-C (30MPH (50 km/h) TO 45MPH (70 km/h)) 30' (9 m) C-C (OVER 45MPH (70 km/h))
RAILROAD CROSSING	24 (600) TRANSVERSE LINES; "RR" IS 6' (1.8 m) LETTERS; 16 (400) LINE FOR "X"	SOLID	WHITE	SEE STATE STANDARD 780001 AREA OF: "R"=3.6 SQ. FT. (0.33 m ²) EACH "X"=54.0 SQ. FT. (5.0 m ²)
SHOULDER DIAGONALS	12 (300) @ 45°	SOLID	WHITE - RIGHT YELLOW - LEFT	50' (15 m) C-C (LESS THAN 30MPH (50 km/h)) 75' (25 m) C-C (30 MPH (50 km/h) TO 45MPH (70 km/h)) 150' (45 m) C-C (OVER 45MPH (70 km/h))

FOR FURTHER DETAILS ON PAVEMENT MARKING REFER TO STANDARD SPECIFICATIONS FOR ROAD AND BRIDGE CONSTRUCTION AND STATE STANDARD 780001.

All dimensions are in inches (millimeters) unless otherwise shown.

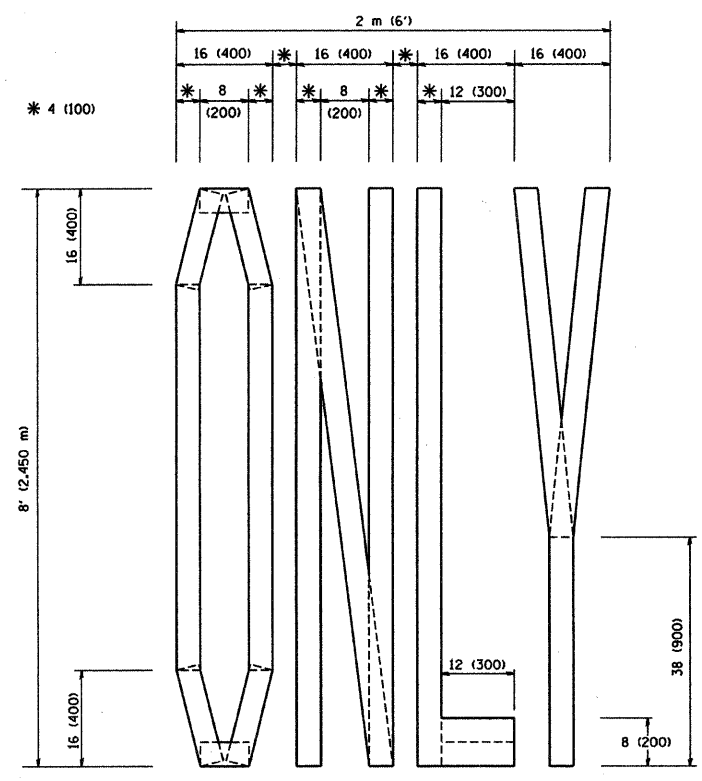
REVISIONS	
NAME	DATE
EVERS	03-19-90
T. RAMMACHER	10-27-94
C. JUCIUS	09-09-09

ILLINOIS DEPARTMENT OF TRANSPORTATION
DISTRICT ONE
TYPICAL PAVEMENT MARKINGS

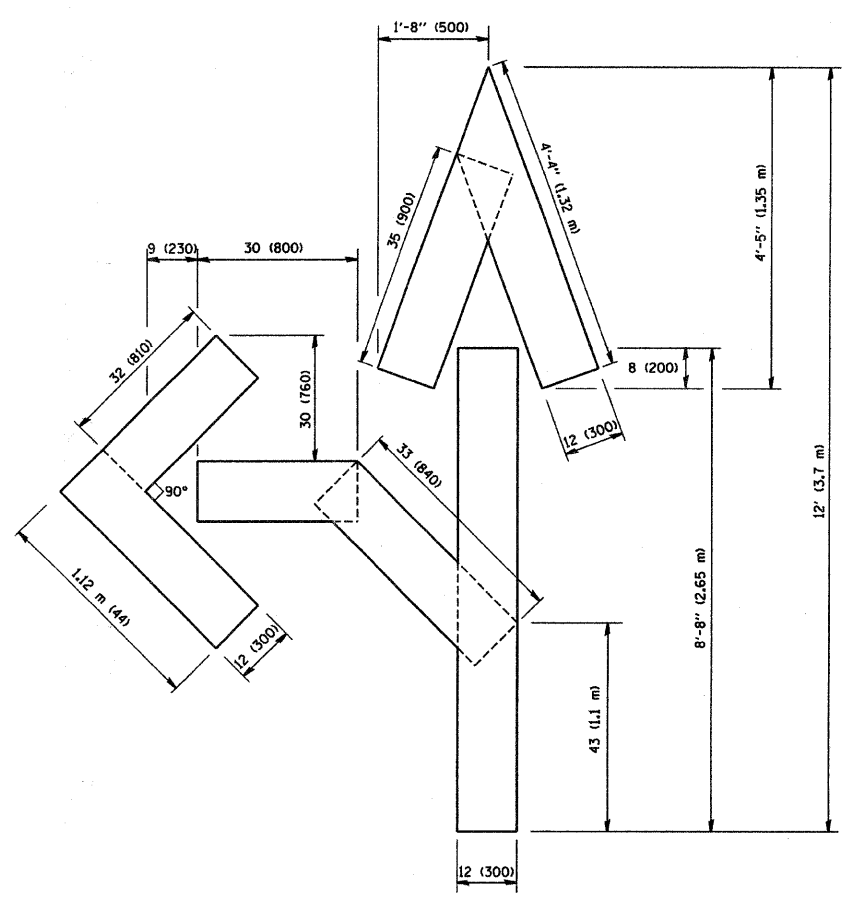
SCALE: NONE
DRAWN BY CADD
CHECKED BY
TC-13

PLOT DATE = 9/9/2009
FILE NAME = c:\pwork\work\pwork\dot\drivklogn\dl000364\vol3.dgn
PLOT SCALE = 50.000 / 1 IN.
USER NAME = drivklogn

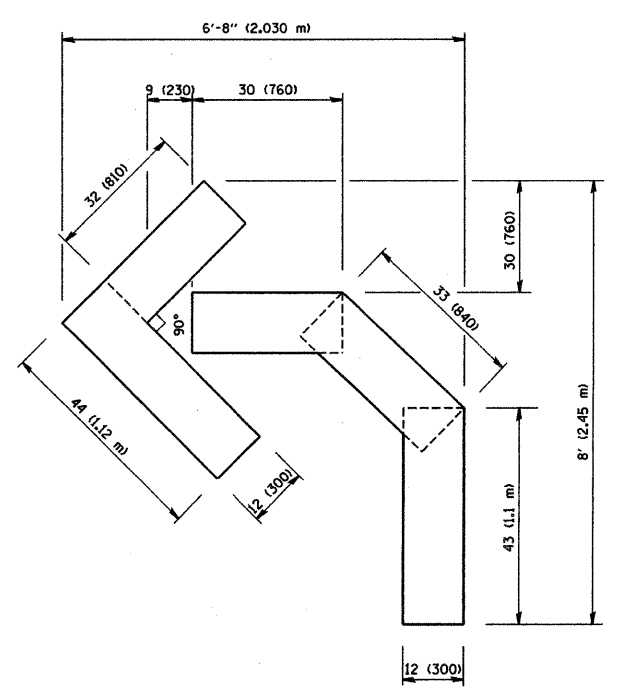
F.A.J. RTE.	SECTION	COUNTY	TOTAL SHEETS	SHEET NO.
2897	09-00089-00-RS	COOK	19	19
STA.		TO STA.		
FED. ROAD DIST. NO.		ILLINOIS FED. AID PROJECT		
CONTRACT NO. 63372				



QUANTITY
 4 (100) LINE = 64.1 ft. (19.7 m)
 21.1 sq. ft. (1.97 sq. m)



QUANTITY
 4 (100) LINE = 82.5 ft. (25.3 m)
 27.5 sq. ft. (2.53 sq. m)



QUANTITY
 4 (100) LINE = 45.5 ft. (13.9 m)
 15.2 sq. ft. (1.39 sq. m)

All dimensions are in inches (millimeters) unless otherwise shown.

REVISIONS	
NAME	DATE
T. RAMMACHER	09/18/94
J. OBERLE	06/01/96
T. RAMMACHER	06/05/96
T. RAMMACHER	11/04/97
T. RAMMACHER	03/02/98
E. GOMEZ	08/28/00

ILLINOIS DEPARTMENT OF TRANSPORTATION

PAVEMENT MARKING
 LETTERS AND SYMBOLS
 FOR TRAFFIC STAGING

SCALE: NONE

DRAWN BY CADD

CHECKED BY

TC-16

PLOT DATE = 2/7/2007
 PLOT SCALE = 80.0000 / IN.
 USER NAME = bauer-d