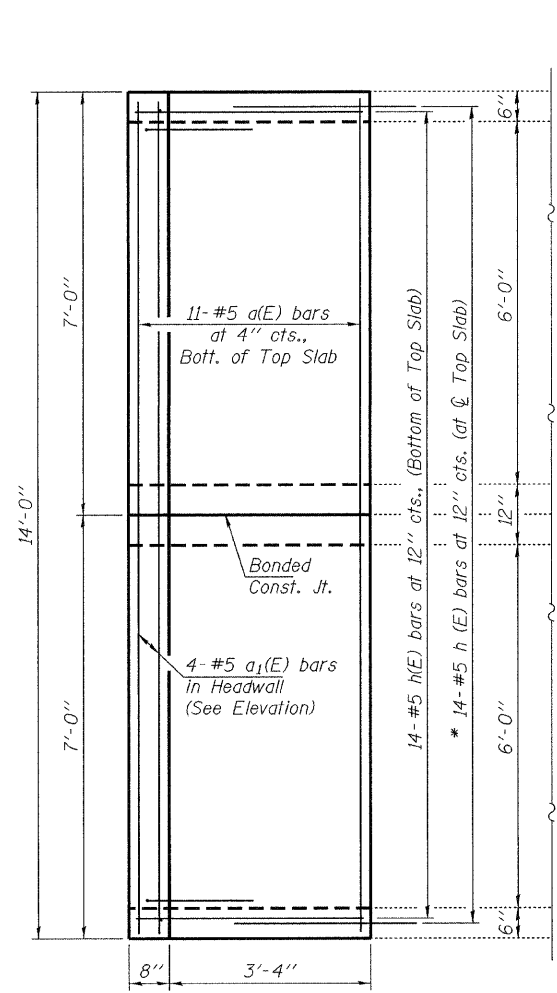
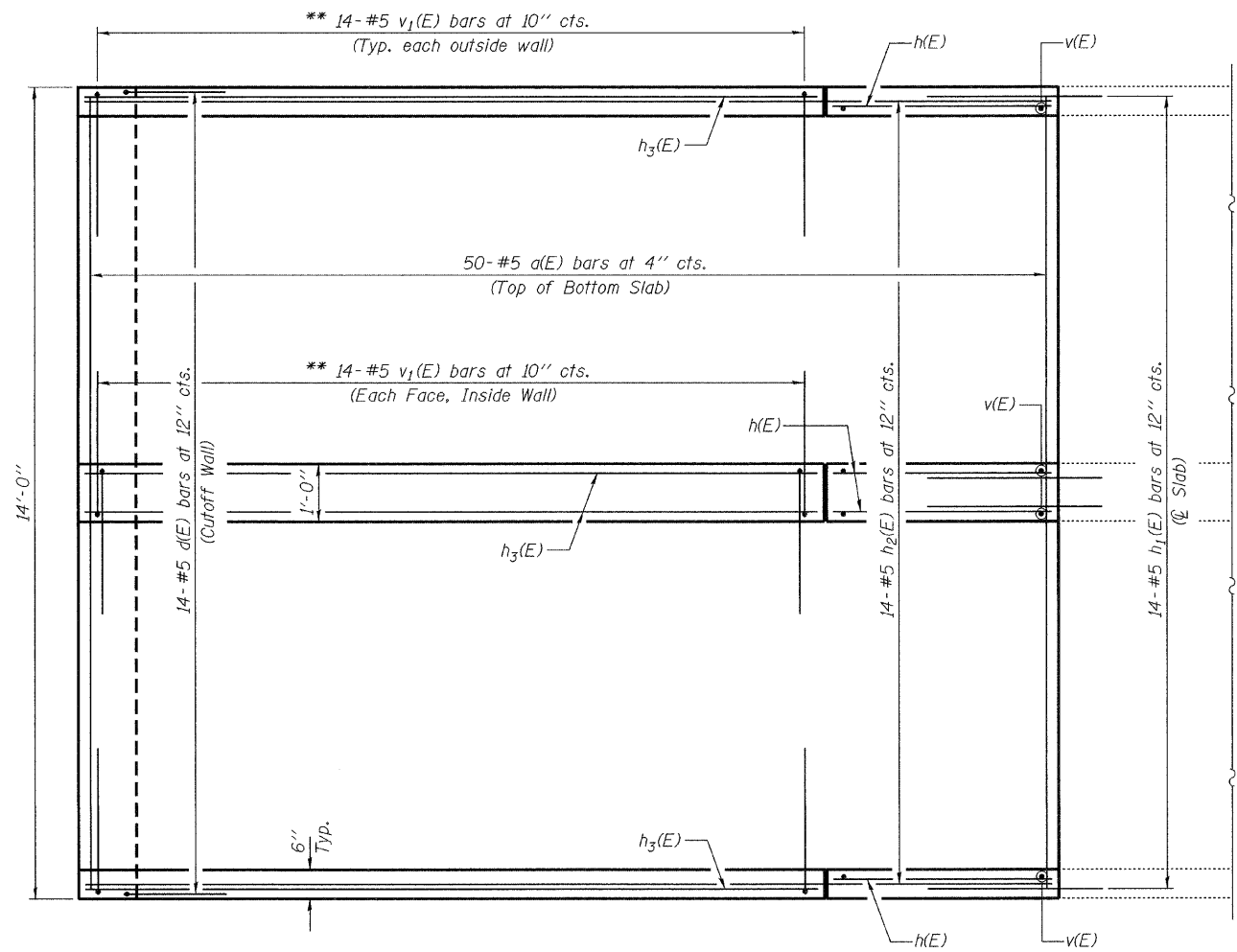


STATE OF ILLINOIS  
DEPARTMENT OF TRANSPORTATION



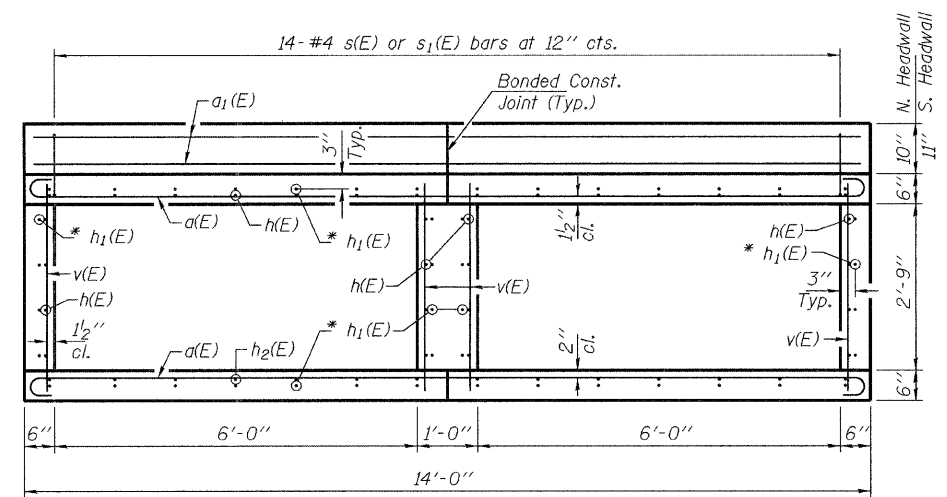
**PLAN - TOP SLAB**

Grated Culvert Extension  
not shown for clarity.



**PLAN - BOTTOM SLAB**

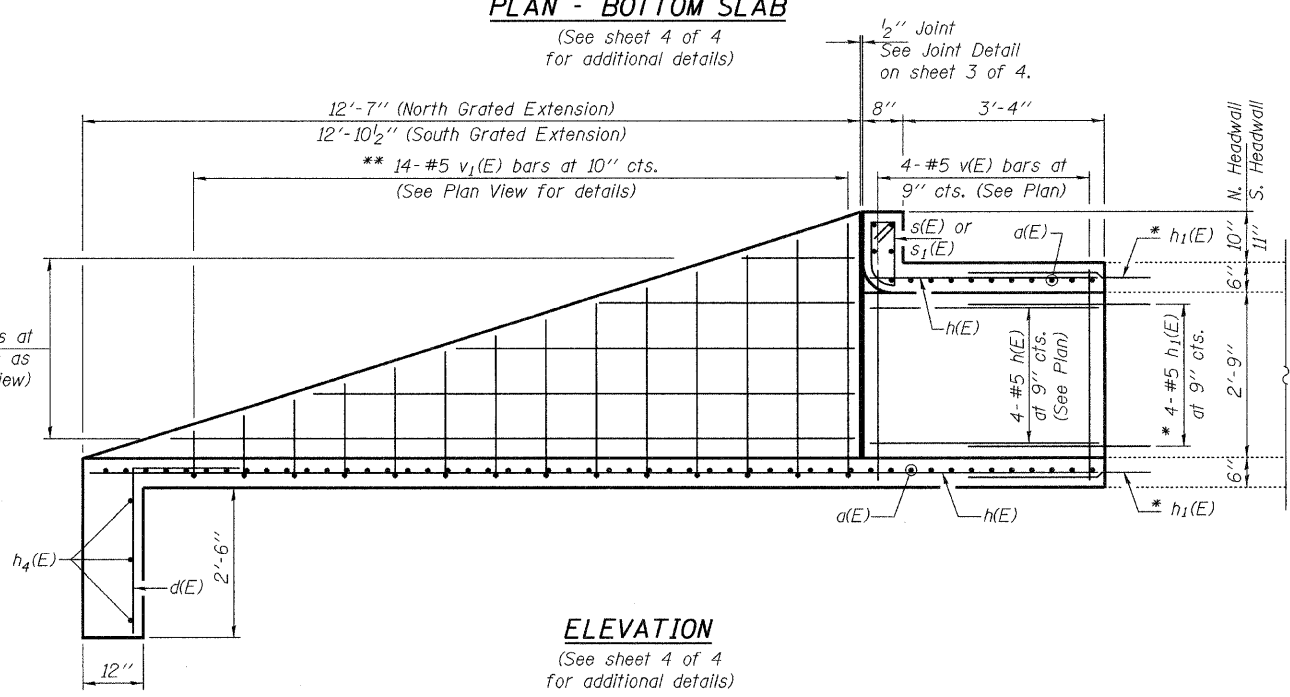
(See sheet 4 of 4  
for additional details)



**END ELEVATION**

- \* Epoxy grout  $h_1(E)$  bars in 9" min. holes according to Article 584 of the Standard Specifications.
- \*\* Order bars full length and cut as shown in Bar Cutting Diagrams on sheet 3 of 4. Place cut bars as shown in the details.

\*\* 5-#5  $h_3(E)$  bars at 9" cts. (at walls as shown in Plan View)



**ELEVATION**

(See sheet 4 of 4  
for additional details)

DESIGNED	ATH
CHECKED	VHV
DRAWN	Kyle M. Steffen
CHECKED	ATH VHV

NOVEMBER 18, 2009  
EXAMINED *A. Carl Perry*  
ENGINEER OF STRUCTURAL SERVICES  
PASSED *Ralph E. Anderson*  
ENGINEER OF BRIDGES AND STRUCTURES

**CULVERT REPAIRS  
IL 75 OVER DRAINAGE DITCH  
SN 101-1035**

SHEET NO. 2	IL RTE.	SECTION	COUNTY	TOTAL SHEETS	SHEET NO.
	75	115 RS-2	WINNEBAGO	120	56
4 SHEETS	CONTRACT NO. 64E89				
FED. ROAD DIST. NO.		ILLINOIS	FED. AID PROJECT		