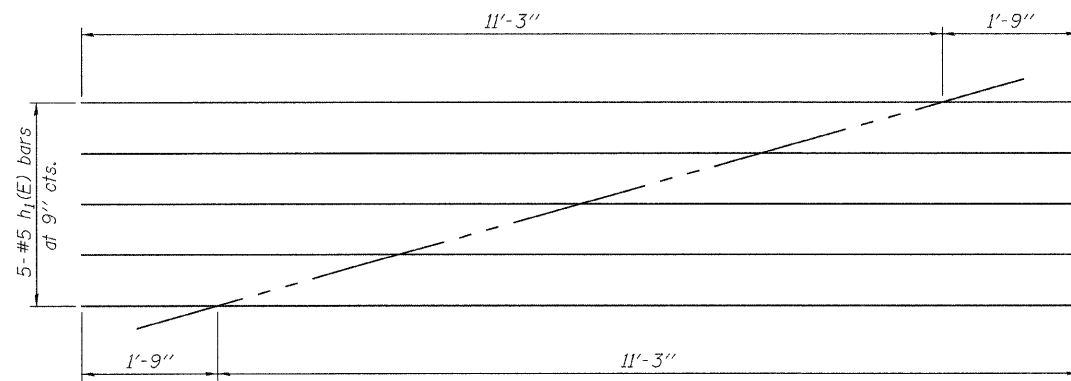
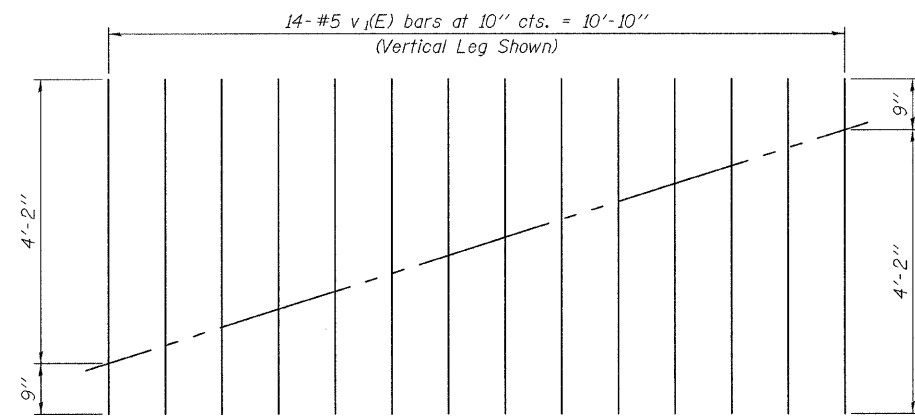


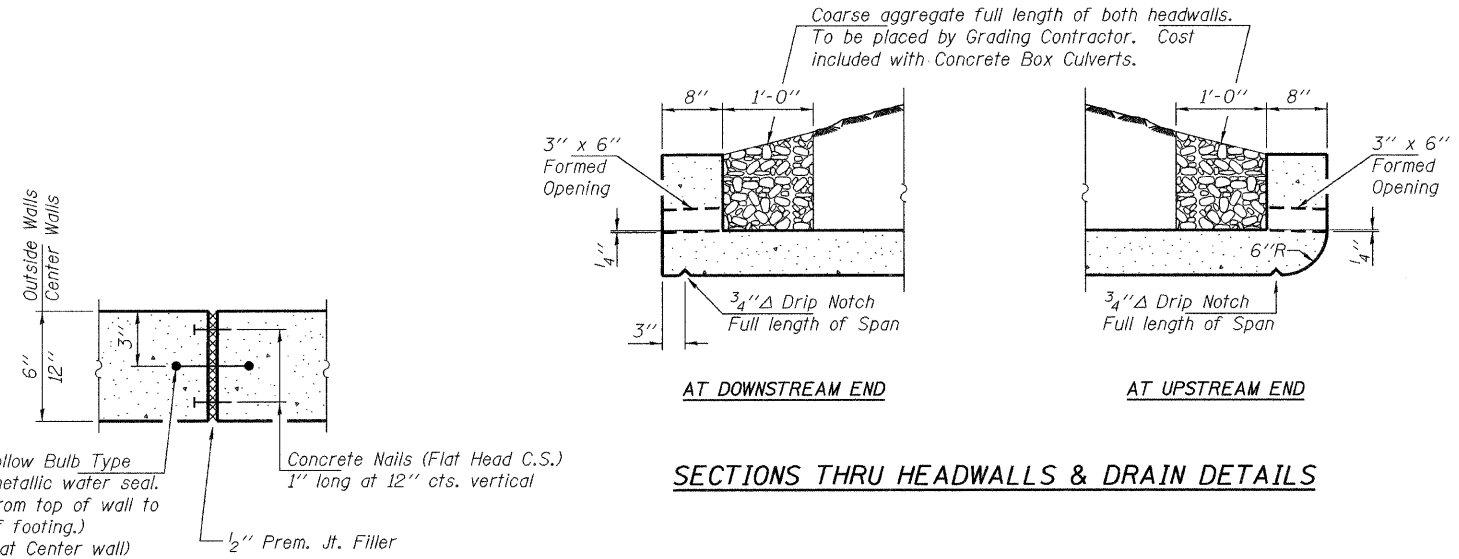
STATE OF ILLINOIS
DEPARTMENT OF TRANSPORTATION



BAR CUTTING DIAGRAM FOR $h_3(E)$ BARS

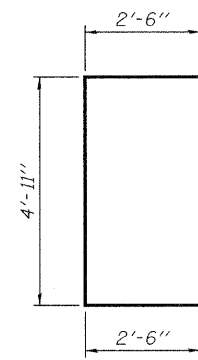


BAR CUTTING DIAGRAM FOR $v_1(E)$ BARS

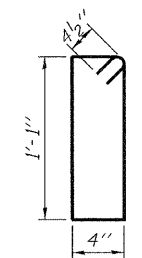


JOINT DETAIL

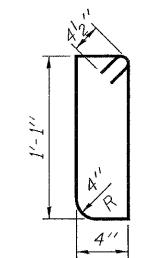
SECTIONS THRU HEADWALLS & DRAIN DETAILS



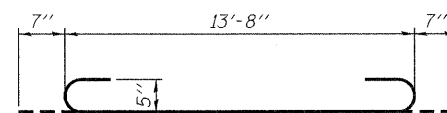
BAR $v_1(E)$



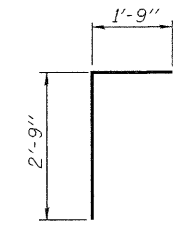
BAR $s(E)$



BAR $s_1(E)$



BAR $a(E)$



BAR $d(E)$

BILL OF MATERIAL

Bar	No.	Size	Length	Shape
$a(E)$	122	#5	14'-10"	□
$a_1(E)$	16	#5	13'-8"	—
$d(E)$	28	#4	4'-6"	┘
$h(E)$	28	#5	3'-9"	—
$h_1(E)$	88	#5	3'-0"	—
$h_2(E)$	28	#5	16'-8"	┘
$h_3(E)$	20	#5	13'-0"	┘
$s(E)$	28	#4	3'-7"	□
$s_1(E)$	28	#4	3'-7"	□
$v(E)$	32	#5	3'-6"	—
$v_1(E)$	56	#5	9'-11"	┘
Concrete Removal		Cu. Yd.	6.3	
Concrete Box Culverts		Cu. Yd.	19.6	
Reinforcement Bars		Pound	4170	
Epoxy Coated				

**CULVERT REPAIRS
IL 75 OVER DRAINAGE DITCH
SN 101-1035**

DESIGNED	ATH
CHECKED	VHV
DRAWN	Kyle M. Steffen
CHECKED	ATH VHV

NOVEMBER 18, 2009
EXAMINED *A. Carl Pomeroy*
ENGINEER OF STRUCTURAL SERVICES
PASSED *Ralph E. Anderson*
ENGINEER OF BRIDGES AND STRUCTURES

SHEET NO. 3 4 SHEETS	IL RTE.	SECTION	COUNTY	TOTAL SHEETS	SHEET NO.
	75	115 RS-2	WINNEBAGO	120	57
			CONTRACT NO. 64E89		
FED. ROAD DIST. NO.		ILLINOIS	FED. AID PROJECT		