

F.A.P. RTE.	SECTION	COUNTY	TOTAL SHEETS	SHEET NO.
738	(5B-1)M	Winnebago	5	1
		ILLINOIS	CONTRACT NO. 64F58	

**FOR INDEX OF SHEETS**

1. Cover Sheet, Index of Sheets
2. Summary of Quantities
3. General Notes
4. Scour countermeasure details
5. Riprap details

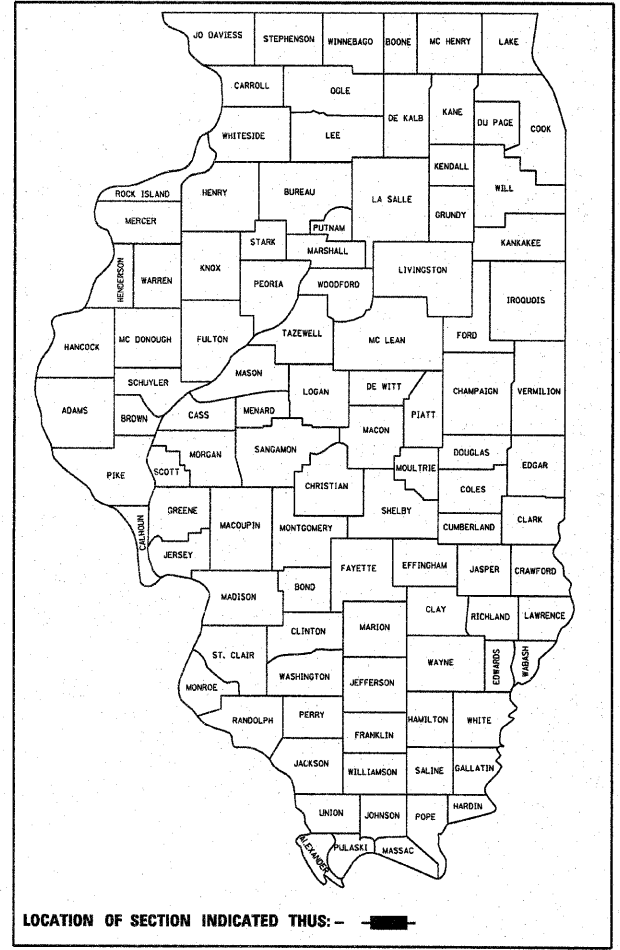
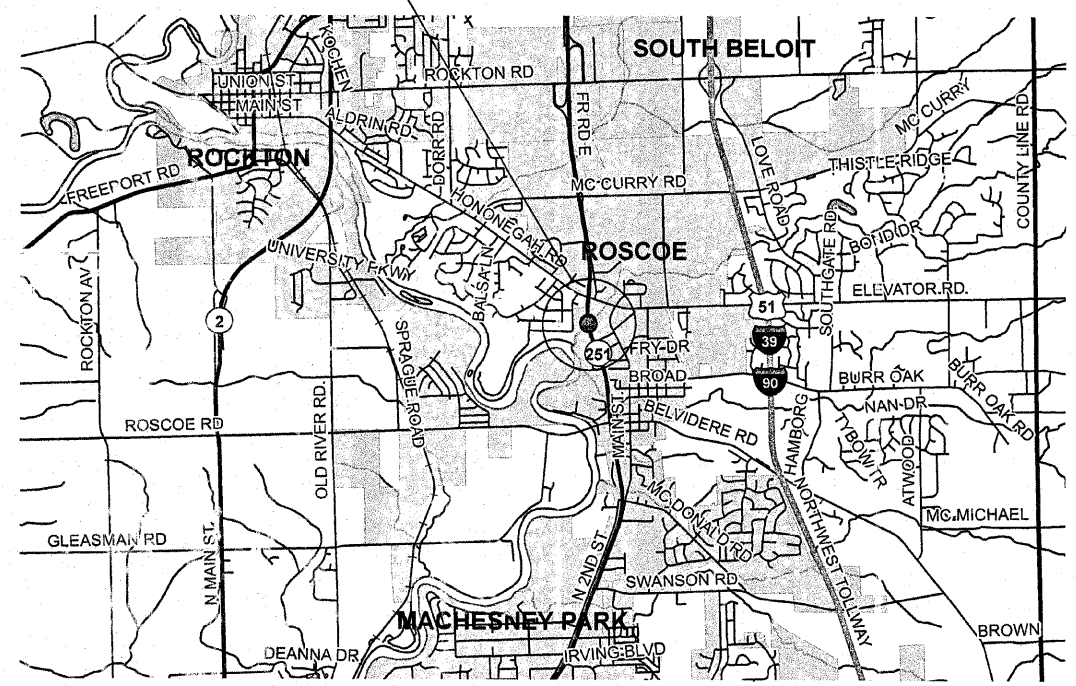
**STATE OF ILLINOIS  
DEPARTMENT OF TRANSPORTATION  
DIVISION OF HIGHWAYS**

**PROPOSED  
HIGHWAY PLANS**

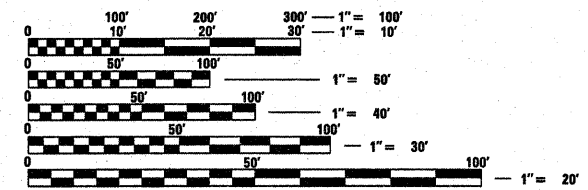
**FAP ROUTE 738 (IL 251)  
SECTION (5B-1)M  
Bridge Repair Scour Protection  
WINNEBAGO COUNTY**

C-92-197-09

Project Location  
Structure No. 101-0035  
101-0036



LOCATION OF SECTION INDICATED THIS: - [black rectangle] -



FULL SIZE PLANS HAVE BEEN PREPARED USING STANDARD ENGINEERING SCALES. REDUCED SIZED PLANS WILL NOT CONFORM TO STANDARD SCALES. IN MAKING MEASUREMENTS ON REDUCED PLANS, THE ABOVE SCALES MAY BE USED.

J.U.L.I.E.  
JOINT UTILITY LOCATION INFORMATION FOR EXCAVATION  
1-800-892-0123  
OR 811

**PROJECT ENGINEER: Mahmoud Etemadi 815/284-5393**

GROSS LENGTH = 163 FT. = 0.031 MILE  
NET LENGTH = 163 FT. = 0.031 MILE

STATE OF ILLINOIS  
DEPARTMENT OF TRANSPORTATION  
DIVISION OF HIGHWAYS

SUBMITTED Oct 1 2009  
George F. Ryan  
DEPUTY DIRECTOR OF HIGHWAYS, REGION ENGINEER

December 4, 2009  
Charles J. Ingersoll  
ENGINEER OF DESIGN AND ENVIRONMENT

December 4, 2009  
Christine M. Reed  
DIRECTOR OF HIGHWAYS, CHIEF ENGINEER

**PRINTED BY THE AUTHORITY  
OF THE STATE OF ILLINOIS**

**CONTRACT NO. 64F58**

# SUMMARY OF QUANTITIES

paycode	description	units	SFTY-2A 100% STATE TOTAL quantity
20200100	EARTH EXCAVATION	CU YD	150
20300100	CHANNEL EXCAVATION	CU YD	285
28100207	STONE RIPRAP, <sup>CLASS</sup> A4	TON	520
28200200	FILTER FABRIC	SQ YD	260
67100100	MOBILIZATION	L SUM	1
70102630	TRAFFIC CONTROL AND PROTECTION, STANDARD 701601	L SUM	1

# GENERAL NOTES

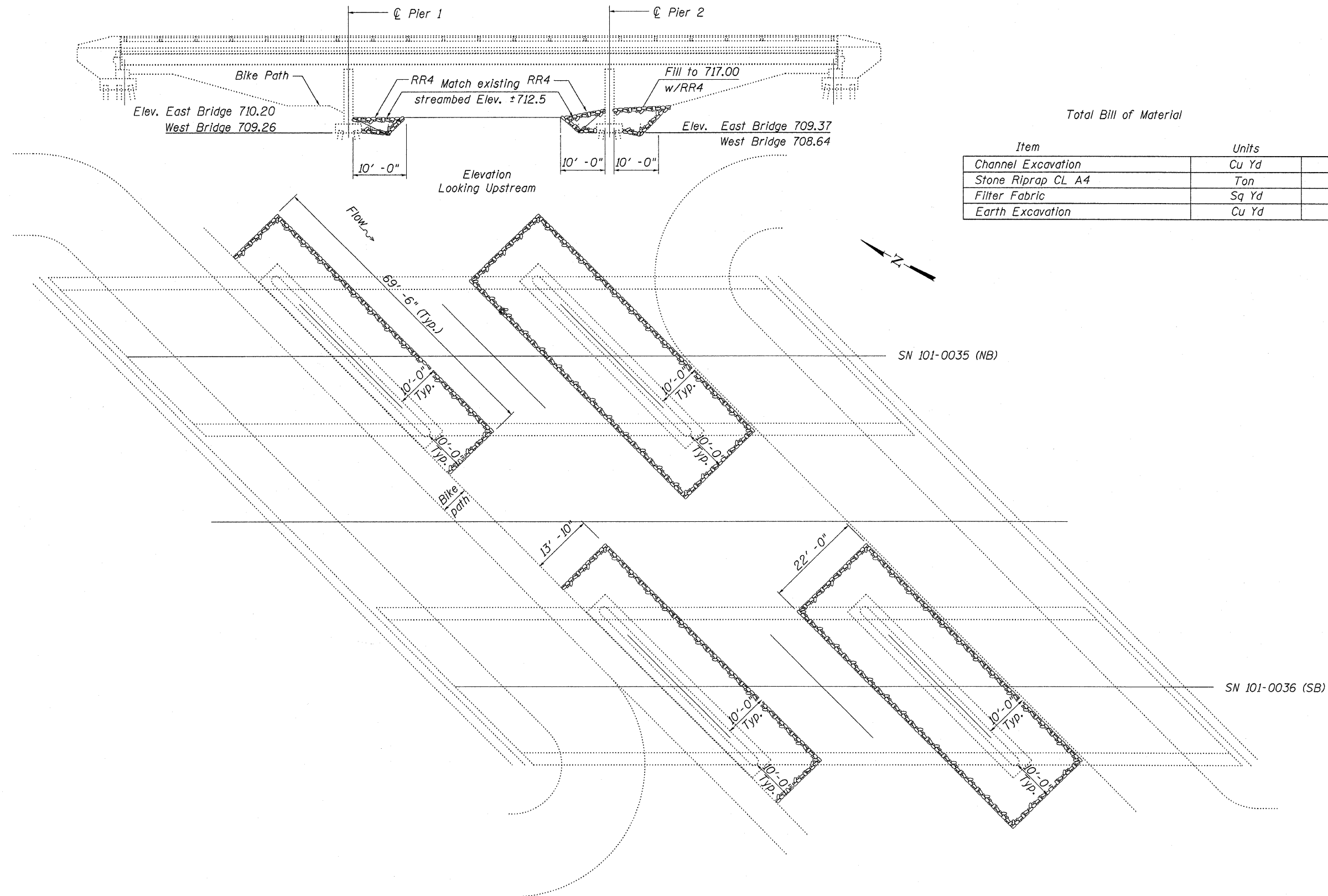
All Borrow/Waste/Use sites must be approved by the Department prior to removing any material from the project or initiating any earthmoving activities, including temporary stockpiling outside the limits of construction.

The Contractor shall seed all disturbed areas within the project limits. Seeding Class 4 shall be used. This work will be included in the contract unit price per Ton for Stone Riprap.

Mulch Method II shall be applied over all seeded areas. This shall be included in the cost of the Stone Riprap.

Culvert & bridge flows must be maintained throughout the project. Normal flow shall be allowed to pass at the rate it enters the jobsite. High flows shall be allowed to pass without causing damage to upstream properties.

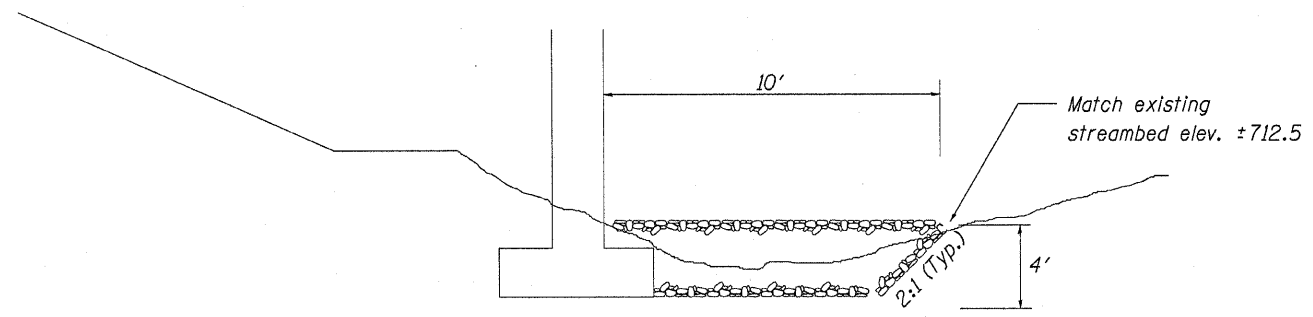
FILE NAME =	USER NAME = lnrkdj	DESIGNED -	REVISED -	<b>STATE OF ILLINOIS DEPARTMENT OF TRANSPORTATION</b>	<b>General Notes</b>	F.A.P. RTE.	SECTION	COUNTY	TOTAL SHEETS	SHEET NO.
D:\BR\CADD plans\Winnebago County\1010035 & 0036\1010035 & 0036.dgn	DRAWN -	REVISED -	738			(5B-1M)	Winnebago	5	3	
PLOT SCALE = 50.0000' / IN.	CHECKED -	REVISED -	CONTRACT NO. 64F58							
PLOT DATE = Thu Oct 01 11:09:56 2009	DATE -	REVISED -	ILLINOIS FED. AID PROJECT							
SCALE: _____ SHEET NO. ___ OF ___ SHEETS STA. _____ TO STA. _____										



Total Bill of Material

Item	Units	Quantity
Channel Excavation	Cu Yd	285
Stone Riprap CL A4	Ton	520
Filter Fabric	Sq Yd	260
Earth Excavation	Cu Yd	150

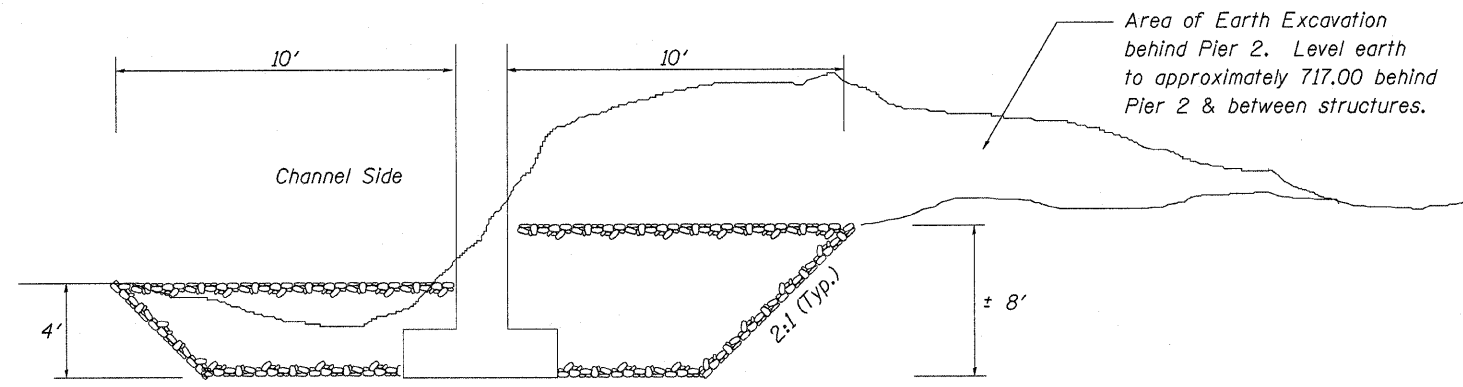
FILE NAME =	USER NAME = linkdj	DESIGNED -	REVISED -	<b>STATE OF ILLINOIS DEPARTMENT OF TRANSPORTATION</b>	<b>Scour Countermeasure Details</b>	F.A.P. RTE.	SECTION	COUNTY	TOTAL SHEETS	SHEET NO.
0:\BR\CADD plans\Winnebago County\1010035 & 0036\1010035 & 0036.dgn	DRAWN -	REVISED -	REVISED -			738	(5B-1M)	Winnebago	5	4
PLOT SCALE = 50.0000' / IN.	CHECKED -	REVISED -	REVISED -			CONTRACT NO. 64F58				
PLOT DATE = Mon Oct 05 10:21:06 2009	DATE -	REVISED -	REVISED -			SCALE: _____ SHEET NO. _____ OF _____ SHEETS STA. _____ TO STA. _____		ILLINOIS FED. AID PROJECT		



Piers 1 & 3  
(No Scale)

Bill of Material  
Piers 1 & 3

Item	Units	Quantity
Channel Excavation	Cu Yd	85
Stone Riprap CL A4	Ton	160
Filter Fabric	Sq Yd	110



Piers 2 & 4  
(No Scale)

Bill of Material  
Piers 2 & 4

Item	Units	Quantity
Channel Excavation	Cu Yd	200
Stone Riprap CL A4	Ton	360
Filter Fabric	Sq Yd	150