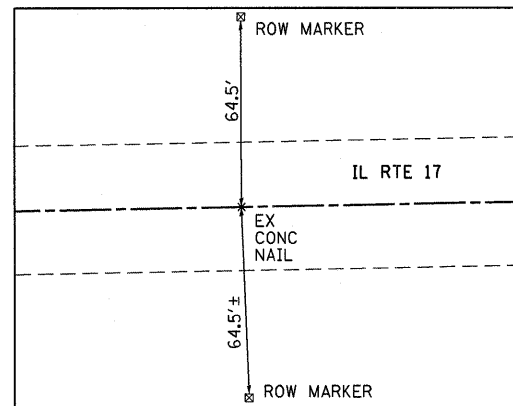
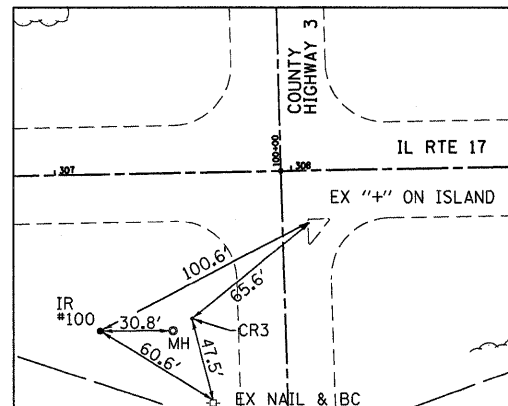


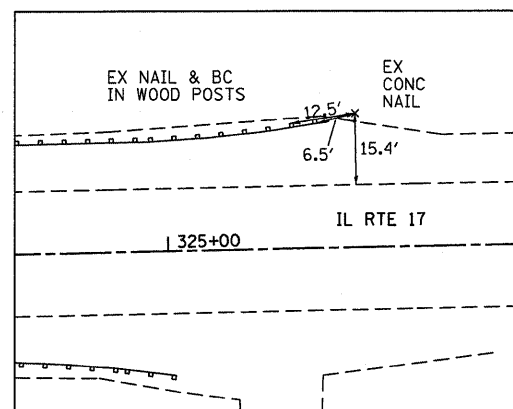
CONTROL TIE STATE #22 (CONC NAIL)
STA 117+20.82



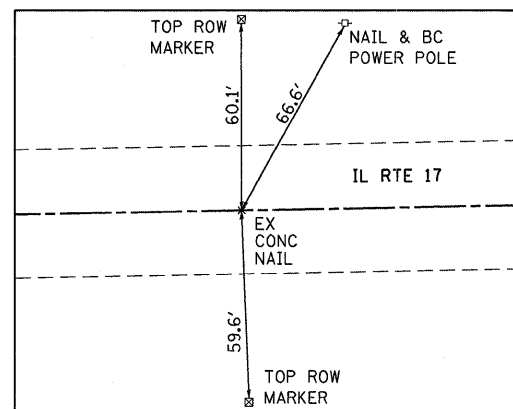
CONTROL TIE STATE #10 (CONC NAIL)
STA 295+00.67



CONTROL TIE STATE (CR3)
STA 307+57/ 61'± RT
CONTROL TIE #100 (IRON ROD)



CONTROL TIE #500 (PK NAIL)
STA 325+40/ 28'± RT



CONTROL TIE STATE #14 (NAIL)
STA 334+58.41

POINT #	NORTHING	EASTING
22	1,614,830.805	991,002.774
10	1,613,087.330	989,754.831
100	1,613,039.675	990,977.467
500	1,613,169.743	992,792.971
14	1,613,157.914	993,711.938

SURVEY CONTROL TIES



FILE NAME =	USER NAME = schwanerg	DESIGNED -	REVISED -	STATE OF ILLINOIS DEPARTMENT OF TRANSPORTATION	TIE POINTS				F.A.P. RTE.	SECTION	COUNTY	TOTAL SHEETS	SHEET NO.
ci:\pw\work\p\dot\schwanerg\dms73146\sh	sets.dgn	DRAWN -	REVISED -		41	15 BR-2	LIVINGSTON	64	9				
PLOT SCALE = 28.0000' / IN.	CHECKED -	REVISED -	REVISED -		CONTRACT NO. 66691								
PLOT DATE = Oct 19, 2009 - 01:48:29 PM	DATE -	REVISED -	REVISED -		SCALE:	SHEET NO. OF SHEETS	STA. TO STA.	FED. ROAD DIST. NO.	ILLINOIS FED. AID PROJECT				