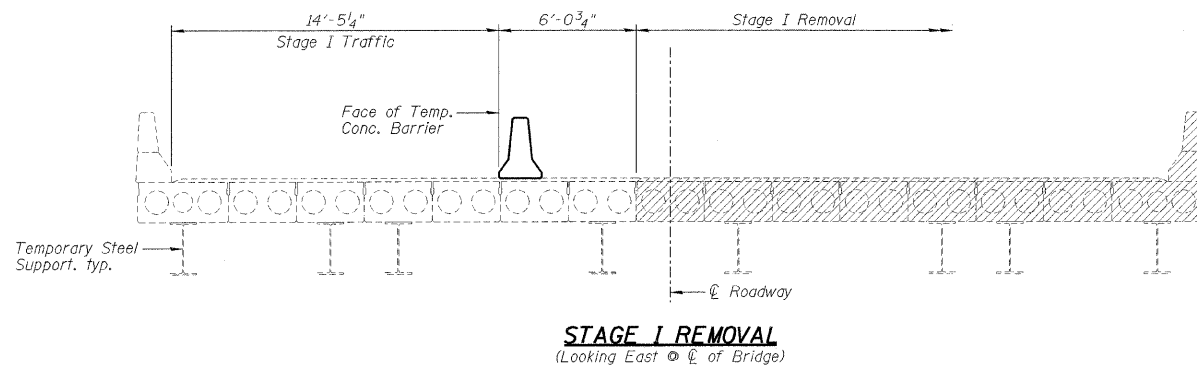
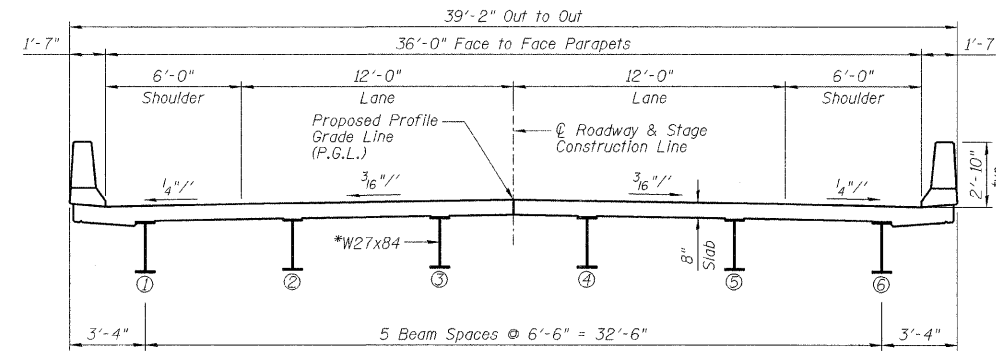


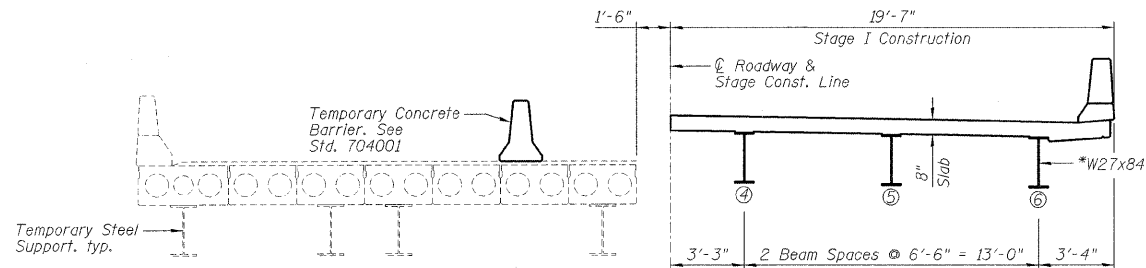
STATE OF ILLINOIS
DEPARTMENT OF TRANSPORTATION



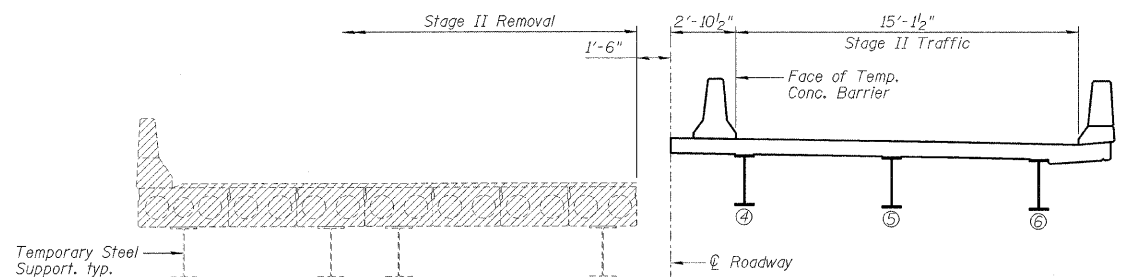
STAGE I REMOVAL
(Looking East @ C of Bridge)



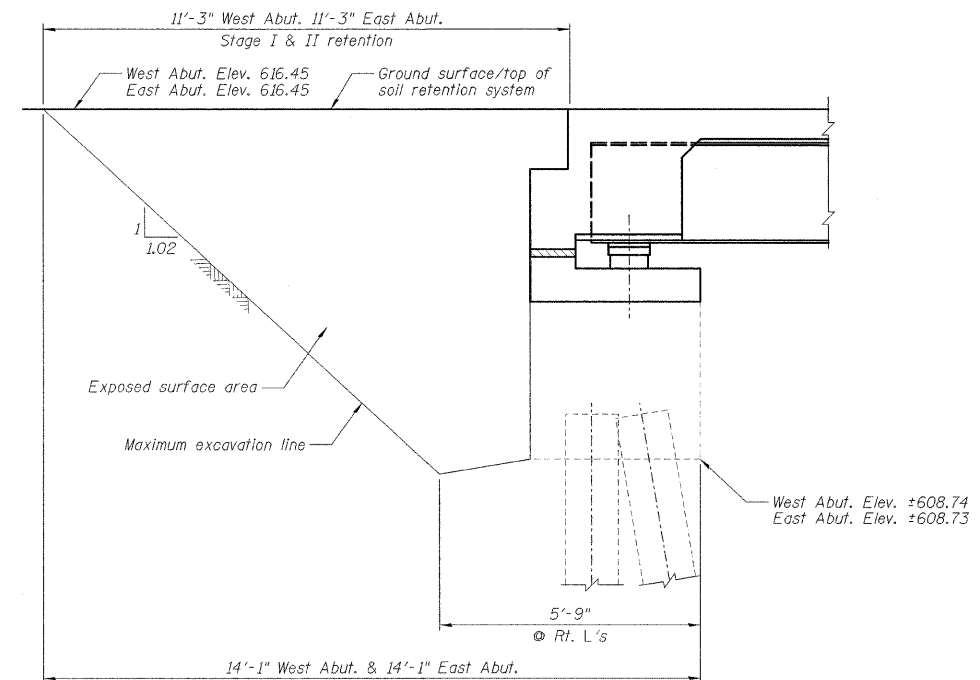
CROSS SECTION
(Looking East @ C of Bridge)



STAGE I CONSTRUCTION
(Looking East @ C of Bridge)



STAGE II REMOVAL
(Looking East @ C of Bridge)



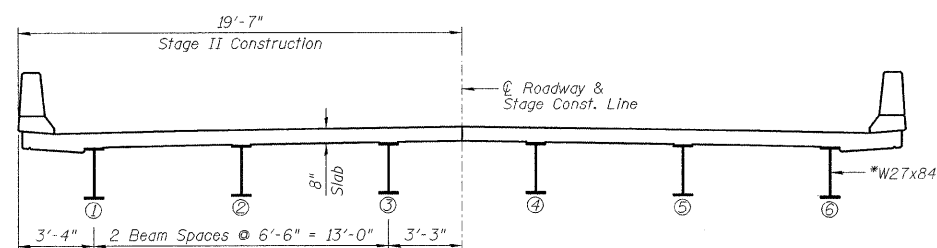
TEMPORARY SOIL RETENTION SYSTEM

NOTES:

- 1.) A cantilever sheet piling design does not appear feasible and additional members or other retention systems may be necessary. The Contractor shall submit a temporary soil retention system design including plan details and calculations for review and acceptance by the Engineer.
- 2.) All dimensions are along roadway unless otherwise noted.

BILL OF MATERIAL

Item	Unit	Total
Temporary Soil Retention System	Sq. Ft.	98



STAGE II CONSTRUCTION
(Looking East @ C of Bridge)

NOTES:

- 1.) *Composite in positive moment region only.
- 2.) Hatched area indicates Removal of Existing PPC Deck Beam Superstructure. Removal of the existing bituminous wearing surface shall be included with Removal of Existing Structures.
- 3.) See Sheet B4 for Temporary Concrete Barrier (Standard 704001). See roadway plans for quantity.

DESIGNED	SDH
CHECKED	JML
DRAWN	JWK/DJM
CHECKED	MSW

DATE 10/07/09

FARNSWORTH GROUP, INC.

CONSULTING ENGINEERS - 2709 MCGRAW DRIVE BLOOMINGTON, ILLINOIS 61704 (309) 663-8435 / (309) 663-1571 FAX

24-8168

SHEET NO. B3	F.A.P. RTE. 41	SECTION 15BR-2	COUNTY LIVINGSTON	TOTAL SHEETS 04	SHEET NO. 19
34 SHEETS			CONTRACT NO. 66691		
FED. ROAD DIST. NO.		ILLINOIS FED. AID PROJECT			