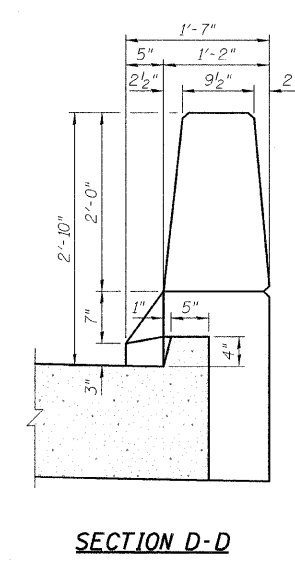
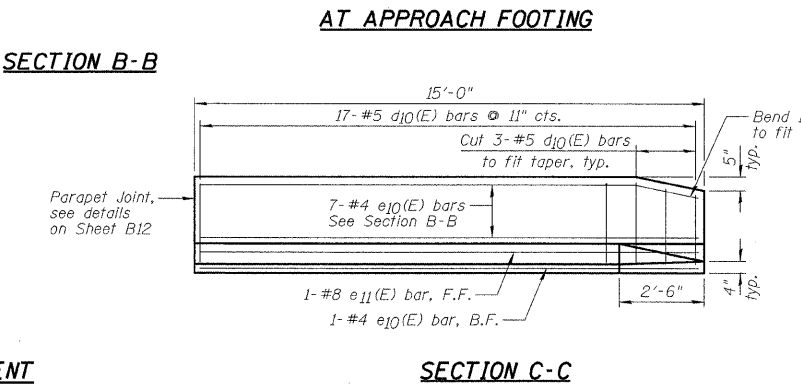
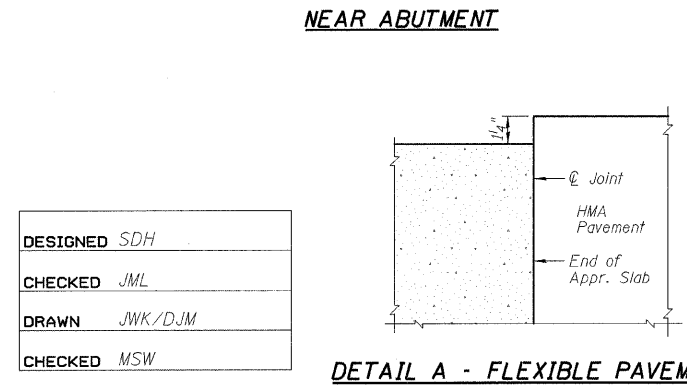
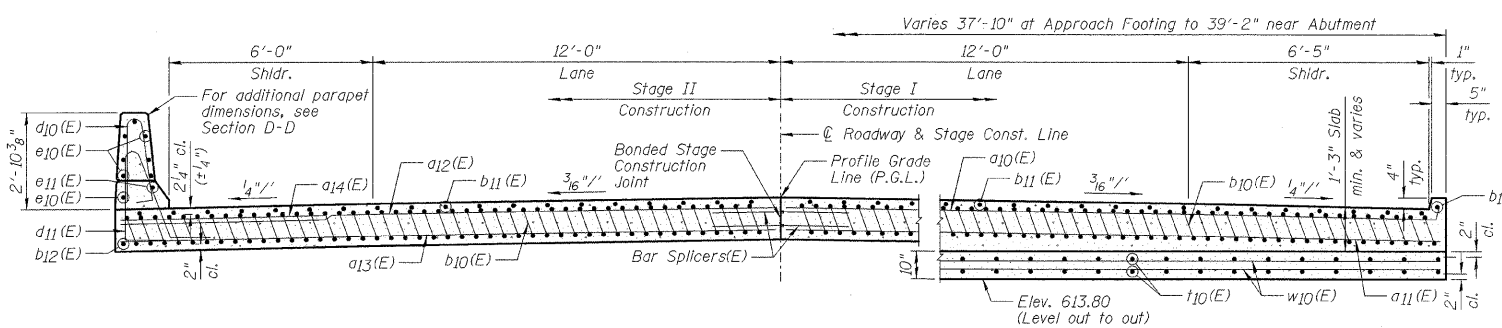
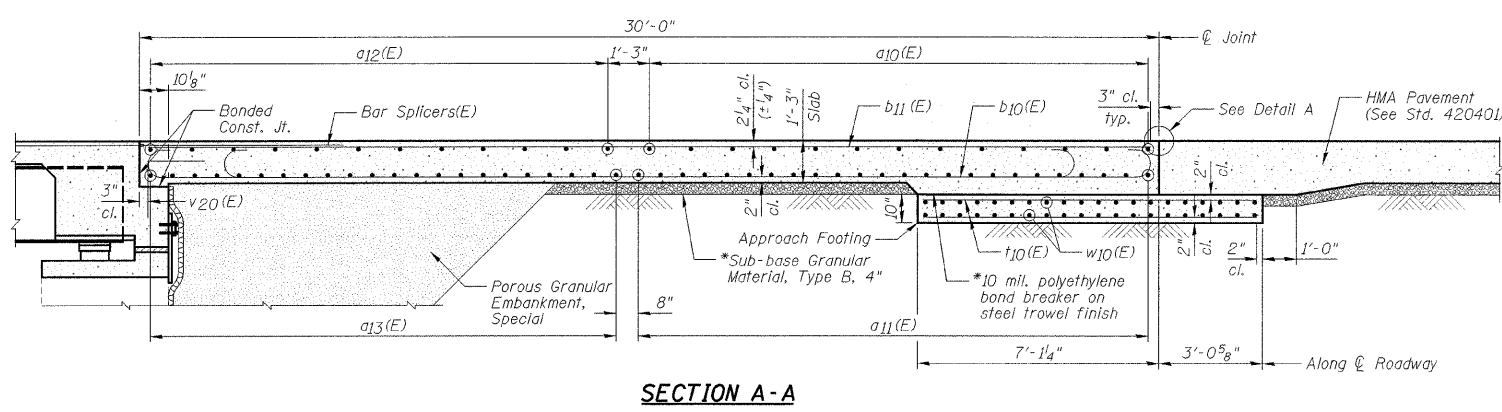
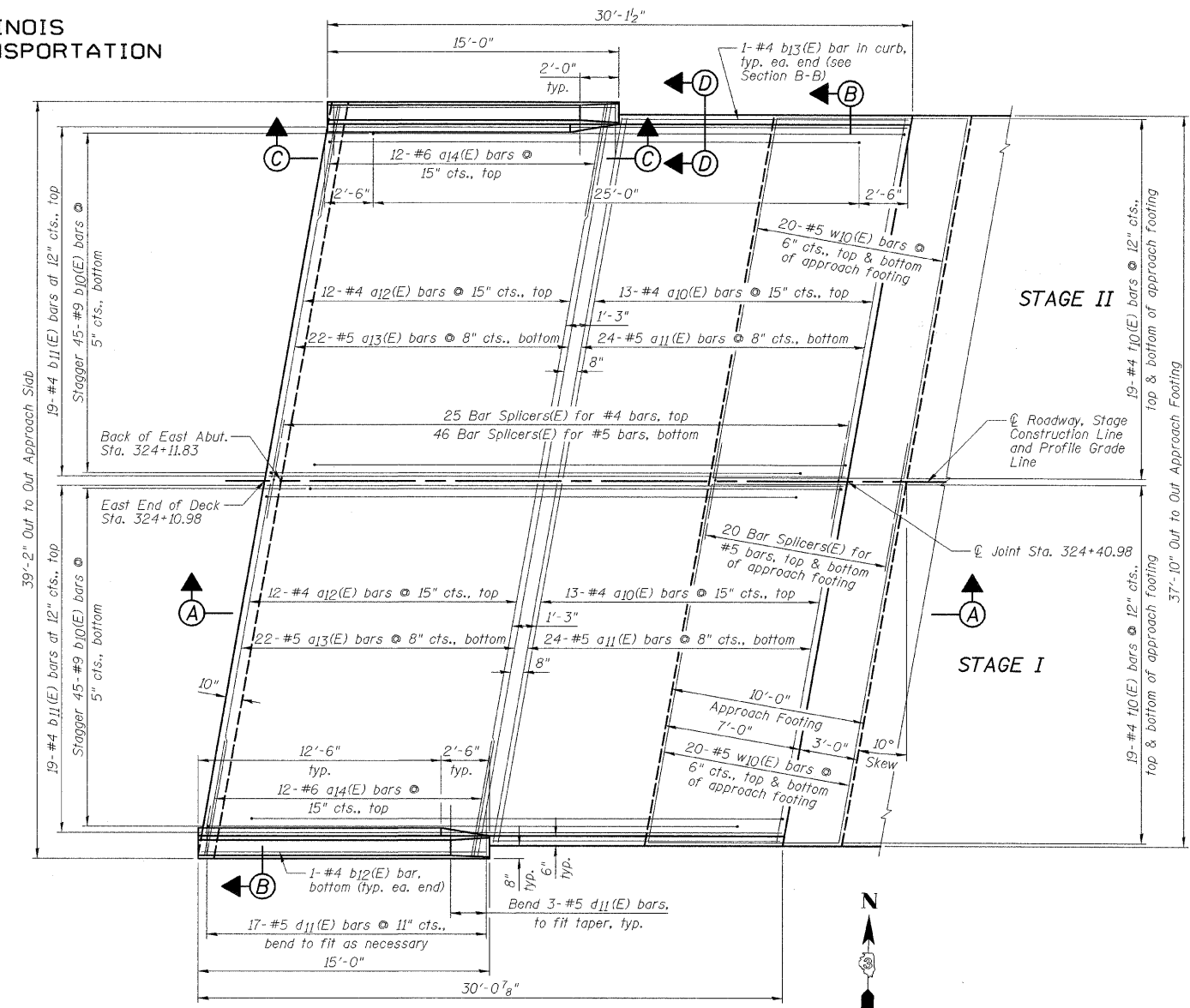
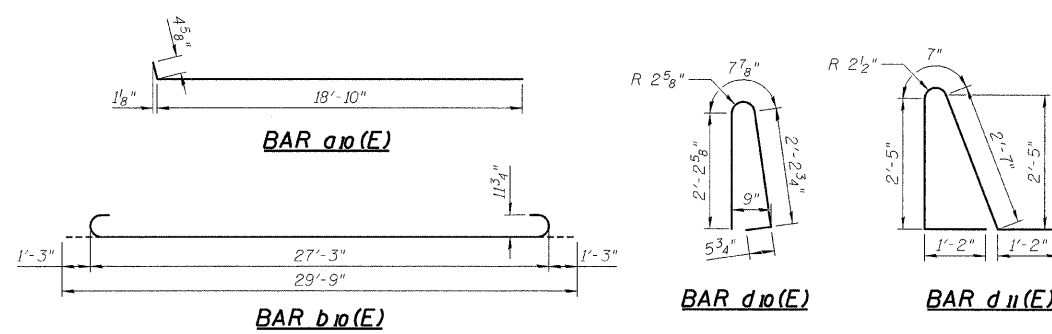


**EAST APPROACH SLAB
BILL OF MATERIAL**

Bar	No.	Size	Length	Shape
a10(E)	26	#4	19'-3"	
a11(E)	48	#5	18'-10"	
a12(E)	24	#4	19'-6"	
a13(E)	44	#5	19'-6"	
a14(E)	24	#6	6'-0"	
b10(E)	90	#9	29'-9"	
b11(E)	38	#4	29'-8"	
b12(E)	2	#4	14'-8"	
b13(E)	2	#4	14'-9"	
d10(E)	34	#5	5'-7"	
d11(E)	34	#5	7'-11"	
e10(E)	16	#4	14'-8"	
e11(E)	2	#8	14'-8"	
f10(E)	76	#4	9'-10"	
w10(E)	80	#5	18'-10"	
Item	Unit	Quantity		
Concrete Superstructure	Cu. Yd.	58.5		
Bridge Deck Grooving	Sq. Yd.	114		
Protective Coat	Sq. Yd.	137		
Concrete Structures	Cu. Yd.	12.1		
Reinforcement Bars, Epoxy Coated	Pound	15,380		

STATE OF ILLINOIS
DEPARTMENT OF TRANSPORTATION



- NOTES:**
- a10(E) thru a14(E) bar spacings measured perpendicular to $\text{\textcircled{C}}$ Roadway.
 - Fit #9 b10(E) bars as required to maintain clearance.
 - Approach Slab and parapet concrete shall be paid for as Concrete Superstructure.
 - Approach Footing concrete shall be paid for as Concrete Structures.
 - Reinforcement shall be paid for as Reinforcement Bars, Epoxy Coated.
 - For v20(E) bar details, see Sheet B14.
 - The Approach Footing maximum applied service bearing pressure ($\text{\textcircled{Q}}$ max) = 2.0 ksf.
 - See Sheet B33 for Bar Splicer Details.
 - Cost of excavation for Approach Footing included with Concrete Structures.
 - For Porous Granular Embankment, Special and drainage treatment details, see Sheet B2.
 - *Cost included with Concrete Superstructure.

**EAST BRIDGE
APPROACH SLAB DETAILS
STRUCTURE NO. 053-0150**

DESIGNED	SDH
CHECKED	JML
DRAWN	JMK/DJM
CHECKED	MSW

SHEET NO. B16	F.A.P. RTE.	SECTION	COUNTY	TOTAL SHEETS	SHEET NO.
34 SHEETS	41	15BR-2	LIVINGSTON	64	32
FED. ROAD DIST. NO.			ILLINOIS FED. AID PROJECT		
CONTRACT NO. 66691					