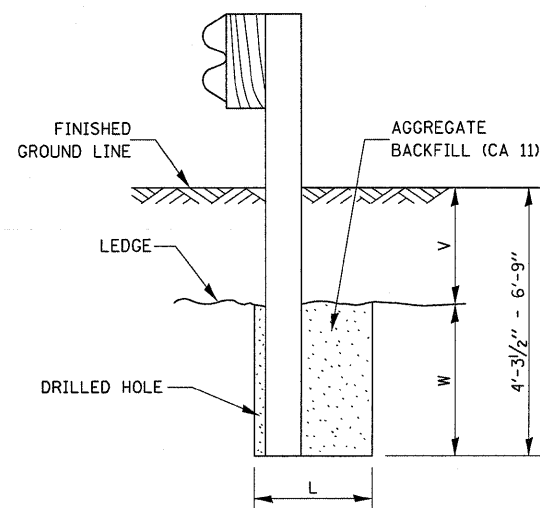


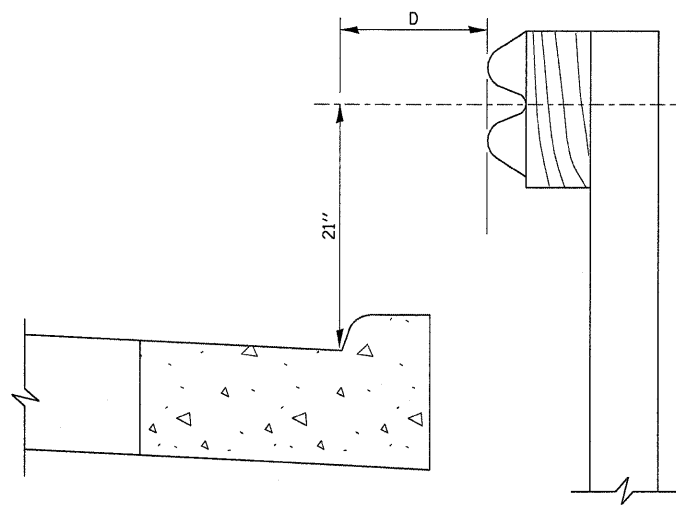
**PLAN**



NOTE:  
LEDGE LINE IS TOP OF ROCK LEDGE OR HARD SLAG FILL.

**ELEVATION**

**FOOTING FOR POST WHEN IMPERVIOUS MATERIAL IS ENCOUNTERED**

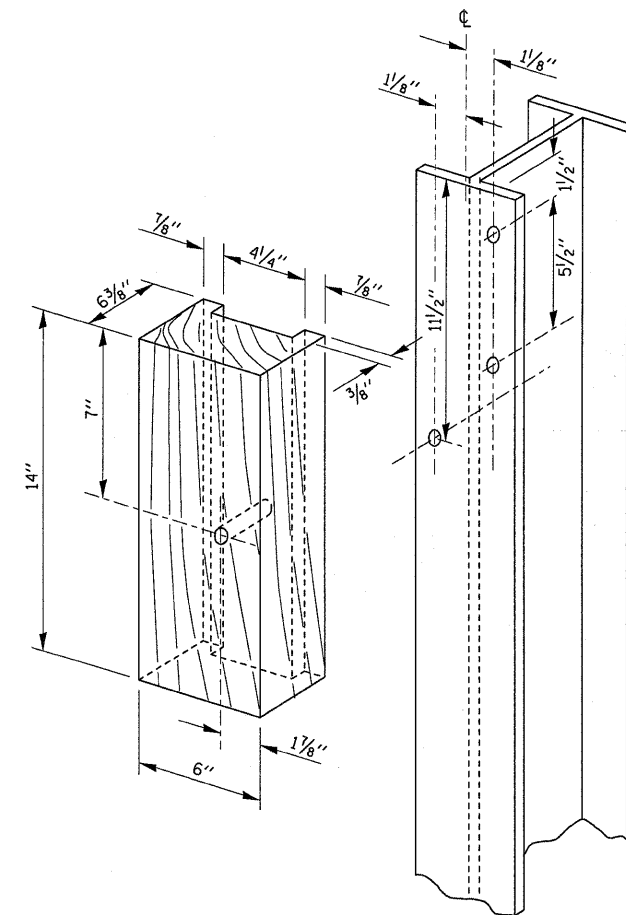


NOTE:  
IF IT IS NECESSARY FOR D TO BE MORE THAN 12" AND LESS THAN 10'-0" TYPE M-2 CURB AND GUTTER (STD. 606001) SHALL BE USED IN FRONT OF AND IN ADVANCE OF THE GUARDRAIL.

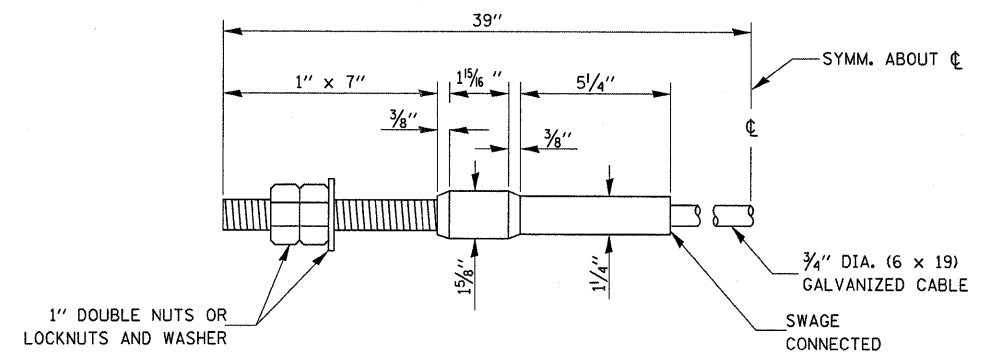
**GUARDRAIL PLACED BEHIND CURB**

(D = 0 DESIRABLE TO 12" MAXIMUM)

V	W	L	
		STEEL POST	WOOD POST
0" - 18"	24"	21"	23"
>18" - 41 1/2"	12"	8"	10"
>41 1/2" - 53 1/2"	12" - 0"	8"	10"



**WOOD BLOCK-OUT AND STEEL POST DETAILS**



**CABLE ASSEMBLY**

40,000 LBS. MIN. BREAKING STRENGTH  
TIGHTEN TO TAUT TENSION.

FILE NAME =	USER NAME = schwankeg	DESIGNED -	REVISED -
ci:\pw\work\p\dot\schwankeg\dms73146\deto1a.dgn		DRAWN -	REVISED -
	PLOT SCALE = 50,0000' / IN.	CHECKED -	REVISED -
	PLOT DATE = Oct 16, 2009 - 03:00:44 PM	DATE -	REVISED -

**STATE OF ILLINOIS  
DEPARTMENT OF TRANSPORTATION**

**REMOVE AND REERECT STEEL PLATE BEAM GUARDRAIL**

SCALE: SHEET NO. 4 OF 4 SHEETS STA. TO STA.

F.A.P. RTE.	SECTION	COUNTY	TOTAL SHEETS	SHEET NO.
41	15BR-2	LIVINGSTON	64	58
FED. ROAD DIST. NO.			ILLINOIS FED. AID PROJECT	
			CONTRACT NO. 66691	