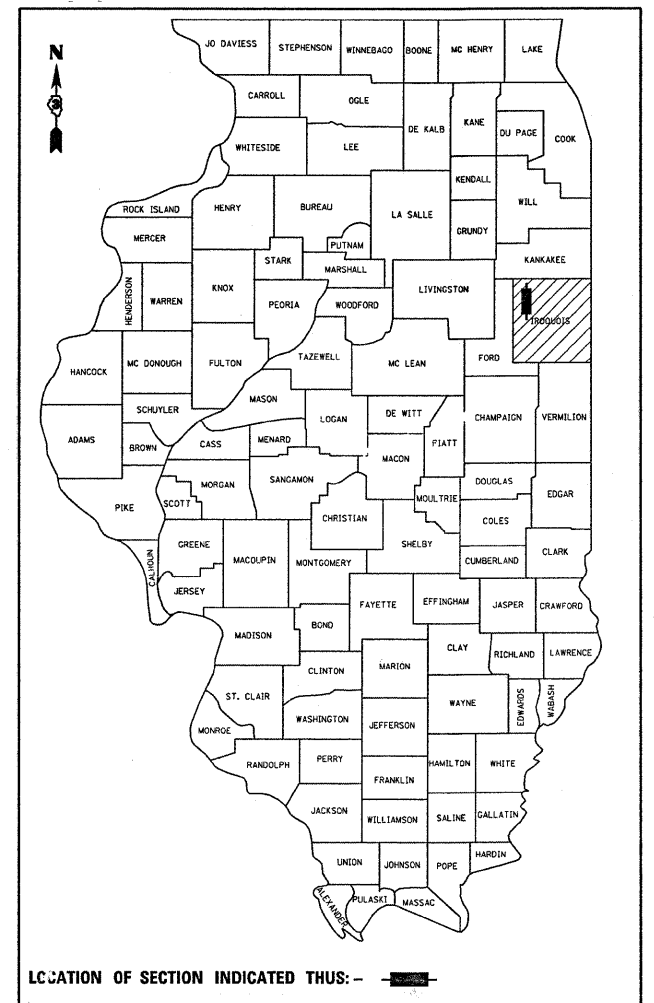


F.A.I. RTE.	SECTION	COUNTY	TOTAL SHEETS	SHEET NO.
57	(38-1,2)RS-2 & I	IROQUOIS	263	1
		ILLINOIS	CONTRACT NO. 66981	

P-93-051-05
D-93-069-09



FUNCTIONAL CLASSIFICATION
INTERSTATE (RURAL)
2009 ADT = 16500
PV = 64% SU = 6% MU = 30%

STATE OF ILLINOIS
DEPARTMENT OF TRANSPORTATION
DIVISION OF HIGHWAYS

SUBMITTED October 21 2009

Mary P. Ryan
DEPUTY DIRECTOR OF HIGHWAYS, REGION ENGINEER

December 4 2009
Charles G. Ingersoll
ENGINEER OF DESIGN AND ENVIRONMENT

December 4 2009
Christine M. Reed
DIRECTOR OF HIGHWAYS, CHIEF ENGINEER

STATE OF ILLINOIS
DEPARTMENT OF TRANSPORTATION
DIVISION OF HIGHWAYS

**PROPOSED
HIGHWAY PLANS**

FAI ROUTE 57 (I-57)
SECTION (38-1,2)RS-2 & I
PROJECT ACIM-057-6(186)298
MILLING & RESURFACING FROM
CLIFTON TO ASHKUM
IROQUOIS COUNTY

C-93-161-09

BEGIN IMPROVEMENT
STA. 913 + 40

SN 038-0013
SN 038-0014
STA. 1037 + 61.38
NO WORK

SN 038-0127 (TR 35)
STA. 940 + 66.59
MINOR REPAIRS

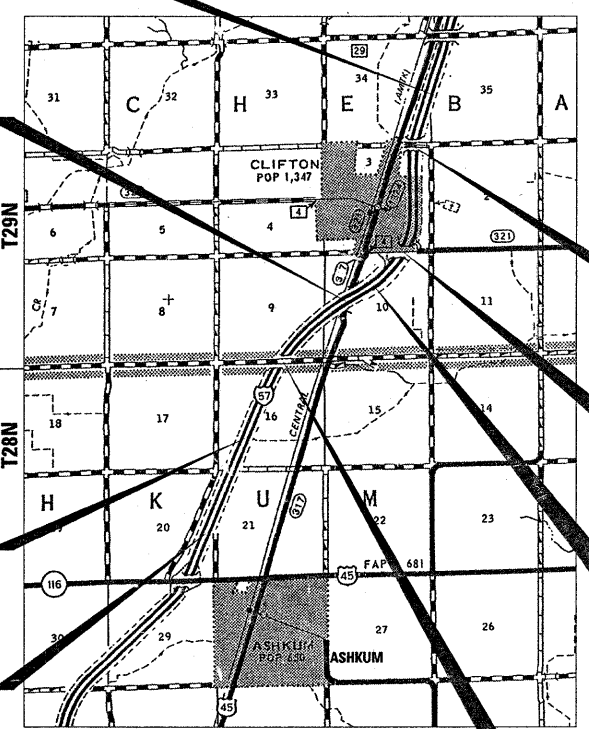
SN 038-0135 (CLIFTON RD)
STA. 995 + 81.97
MINOR REPAIRS

SN 038-2508
STA. 1120 + 67.5
NO WORK

SN 038-2507
STA. 1013 + 00
NO WORK

END IMPROVEMENT
STA. 1167 + 47.64 BK

SN 038-0128 (TR 49A)
STA. 1080 + 09.03
MINOR REPAIRS



NOT TO SCALE

GROSS LENGTH = 25407.5 FT. = 4.81 MILE
NET LENGTH = 25040.2 FT. = 4.74 MILE

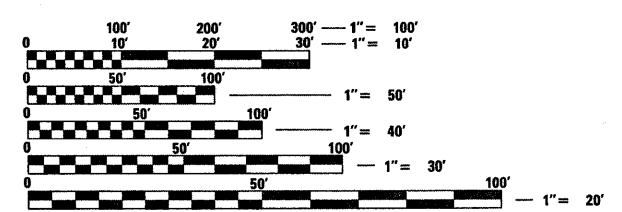
STATION EQUATION
STA. 1167 + 47.64 BK = 99 + 99.80 AK

INDEX OF SHEETS

- 1 COVER SHEET
- 2 HIGHWAY STANDARDS & GENERAL NOTES
- 3 - 6 SUMMARY OF QUANTITIES
- 7 - 10 TYPICAL SECTIONS
- 11 - 16 SCHEDULE OF QUANTITIES
- 17 - 21 ALIGNMENT, TIES & BENCHMARKS
- 22 - 39 PLAN & PROFILE SHEETS - MAINLINE
- 40 - 47 PLAN & PROFILE SHEETS - RAMPS
- 48 - 54 BRIDGE REPAIR PLANS
- 55 ALTERNATE ROUTE SIGNING
- 56 - 60 TRAFFIC CONTROL DETAILS
- 61 - 68 DETAILS
- 69 - 231 CROSS SECTIONS - MAINLINE
- 232 - 263 CROSS SECTIONS - RAMPS

FOR HIGHWAY STANDARDS, SEE SHEET NO. 2

MICROFILMED _____
REEL NUMBER _____
AWARDED _____
RESIDENT ENGINEER _____
AS BUILT CHANGES WERE MADE
ON THE FOLLOWING SHEETS _____



FULL SIZE PLANS HAVE BEEN PREPARED USING STANDARD ENGINEERING SCALES. REDUCED SIZED PLANS WILL NOT CONFORM TO STANDARD SCALES. IN MAKING MEASUREMENTS ON REDUCED PLANS, THE ABOVE SCALES MAY BE USED.

J.U.L.I.E.
JOINT UTILITY LOCATION INFORMATION FOR EXCAVATION
1-800-892-0123
OR 811

PROJECT ENGINEER: CRAIG REED
UNIT CHIEF: BRAD DUNCAN
TOWNSHIPS: CHEBANSE, ASHKUM

CONTRACT NO. 66981

**PRINTED BY THE AUTHORITY
OF THE STATE OF ILLINOIS**