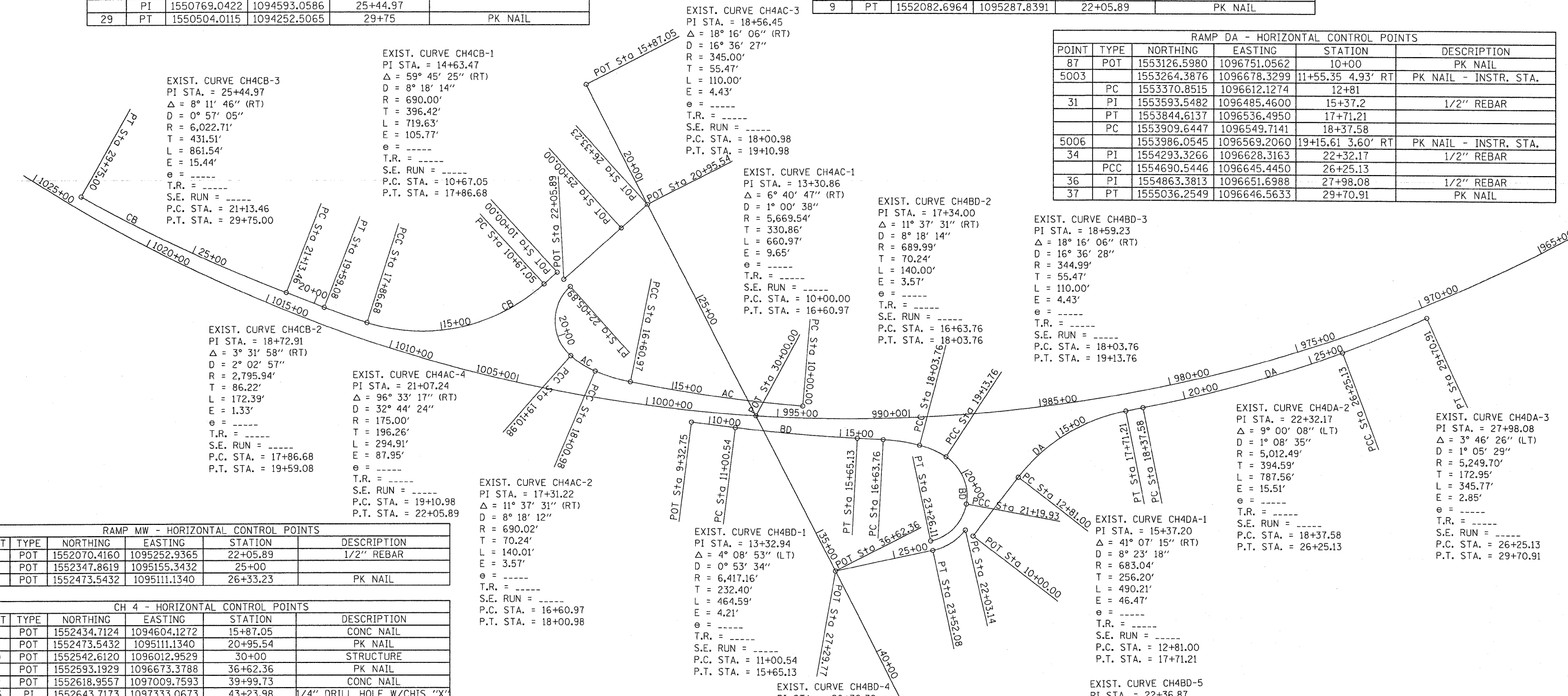


RAMP CB - HORIZONTAL CONTROL POINTS					
POINT	TYPE	NORTHING	EASTING	STATION	DESCRIPTION
5002		1552062.489	1095210.836		PK NAIL - INSTR. STA.
92	POT	1552058.1384	1095218.0329	10+00	
22	PC	1551994.8878	1095240.2817	10+67.05	PK NAIL
23	PI	1551620.9285	1095371.8242	14+63.47	1/2" REBAR
	PCC	1551318.9375	1095115.0160	17+86.68	
25	PI	1551253.2521	1095059.1582	18+72.91	PK NAIL
	PT	1551191.1334	1094999.3591	19+59.08	
	PC	1551079.9110	1094892.2896	21+13.46	
	PI	1550769.0422	1094593.0586	25+44.97	
29	PT	1550504.0115	1094252.5065	29+75	PK NAIL

RAMP AC - HORIZONTAL CONTROL POINTS					
POINT	TYPE	NORTHING	EASTING	STATION	DESCRIPTION
1	PC	1552720.6524	1096047.4940	10+00	PK NAIL
	PI	1552427.1543	1095894.7603	13+30.86	
3	PCC	1552153.4143	1095708.9240	16+60.97	PK NAIL
4	PI	1552095.2974	1095669.4697	17+31.22	PK NAIL
	PCC	1552046.3231	1095619.1136	18+00.98	
6	PI	1552007.6483	1095579.3475	18+56.45	PK NAIL
	PCC	1551983.3883	1095529.4623	19+10.98	
8	PI	1551897.5543	1095352.9645	21+07.24	1/2" REBAR
9	PT	1552082.6964	1095287.8391	22+05.89	PK NAIL

RAMP DA - HORIZONTAL CONTROL POINTS					
POINT	TYPE	NORTHING	EASTING	STATION	DESCRIPTION
87	POT	1553126.5980	1096751.0562	10+00	PK NAIL
5003		1553264.3876	1096678.3299	11+55.35 4.93' RT	PK NAIL - INSTR. STA.
	PC	1553370.8515	1096612.1274	12+81	
31	PI	1553593.5482	1096485.4600	15+37.2	1/2" REBAR
	PT	1553844.6137	1096536.4950	17+71.21	
	PC	1553909.6447	1096549.7141	18+37.58	
5006		1553986.0545	1096569.2060	19+15.61 3.60' RT	PK NAIL - INSTR. STA.
34	PI	1554293.3266	1096628.3163	22+32.17	1/2" REBAR
	PCC	1554690.5446	1096645.4450	26+25.13	
36	PI	1554863.3813	1096651.6988	27+98.08	1/2" REBAR
37	PT	1555036.2549	1096646.5633	29+70.91	PK NAIL



RAMP MW - HORIZONTAL CONTROL POINTS					
POINT	TYPE	NORTHING	EASTING	STATION	DESCRIPTION
94	POT	1552070.4160	1095252.9365	22+05.89	1/2" REBAR
	POT	1552347.8619	1095155.3432	25+00	
96	POT	1552473.5432	1095111.1340	26+33.23	PK NAIL

CH 4 - HORIZONTAL CONTROL POINTS					
POINT	TYPE	NORTHING	EASTING	STATION	DESCRIPTION
97	POT	1552434.7124	1094604.1272	15+87.05	CONC NAIL
98	POT	1552473.5432	1095111.1340	20+95.54	PK NAIL
300	POT	1552542.6120	1096012.9529	30+00	STRUCTURE
100	POT	1552593.1929	1096673.3788	36+62.36	PK NAIL
302	POT	1552618.9557	1097009.7593	39+99.73	CONC NAIL
5115	PI	1552643.7173	1097333.0673	43+23.98	1/4" DRILL HOLE W/CHIS "X"

RAMP BD - HORIZONTAL CONTROL POINTS					
POINT	TYPE	NORTHING	EASTING	STATION	DESCRIPTION
89	POT	1552307.5216	1095940.4454	9+32.75	PK NAIL
	PC	1552453.0545	1096023.9604	11+00.54	
11	PI	1552654.6215	1096139.6310	13+32.94	PK NAIL
	PT	1552864.0275	1096240.4181	15+65.13	
	PC	1552952.8981	1096283.1915	16+63.76	
14	PI	1553016.1889	1096313.6534	17+34	PK NAIL
	PCC	1553072.0431	1096356.2442	18+03.76	
16	PI	1553116.1563	1096389.8820	18+59.23	PK NAIL
	PCC	1553147.4989	1096435.6484	19+13.76	
18	PI	1553213.5714	1096532.1273	20+30.70	1/2" REBAR
	PCC	1553149.7287	1096630.0897	21+19.93	
20	PI	1553085.8827	1096728.0571	22+36.87	1/2" REBAR
	PT	1552970.9388	1096706.5663	23+26.11	

RAMP ME - HORIZONTAL CONTROL POINTS					
POINT	TYPE	NORTHING	EASTING	STATION	DESCRIPTION
38	PC	1553109.3049	1096718.8947	22+03.14	1/2" REBAR
39	PI	1553040.7750	1096757.3062	22+80.83	1/2" REBAR
40	PT	1552964.4159	1096742.9879	23+52.08	1/2" REBAR
91	POT	1552593.1929	1096673.3788	27+29.77	PK NAIL