



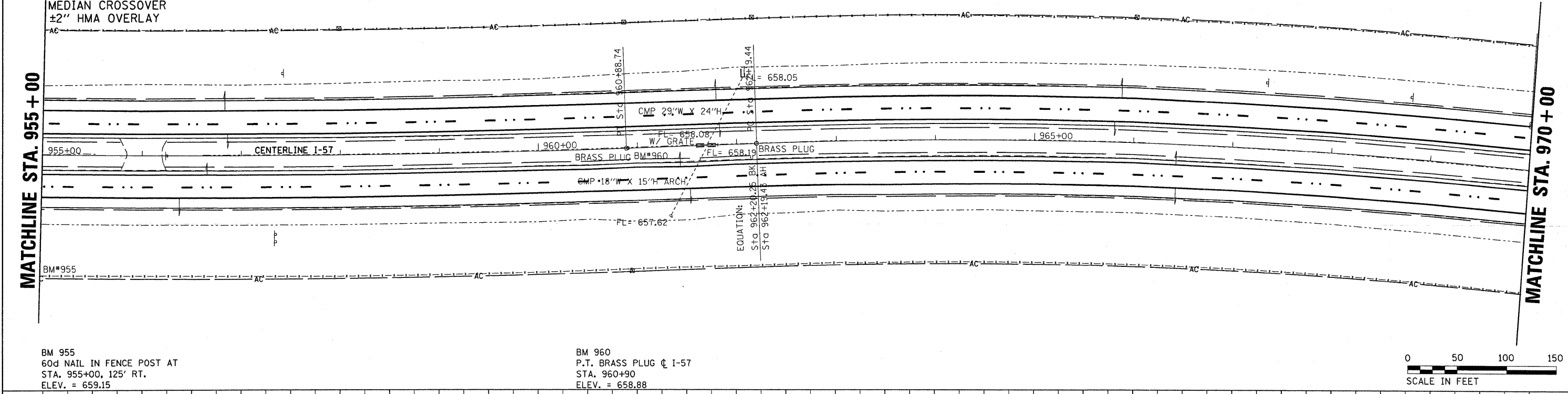
STA 961+70
 NB 24'X70' RCCP WITH INLET BOX - NO WORK
 MEDIAN INLET BOXES - NO WORK
 SB 18'X67' CMP WITH END SECTION - CLEAN CULV

STA 956+00
 MEDIAN CROSSOVER
 ±2" HMA OVERLAY

MATCHLINE STA. 955 + 00

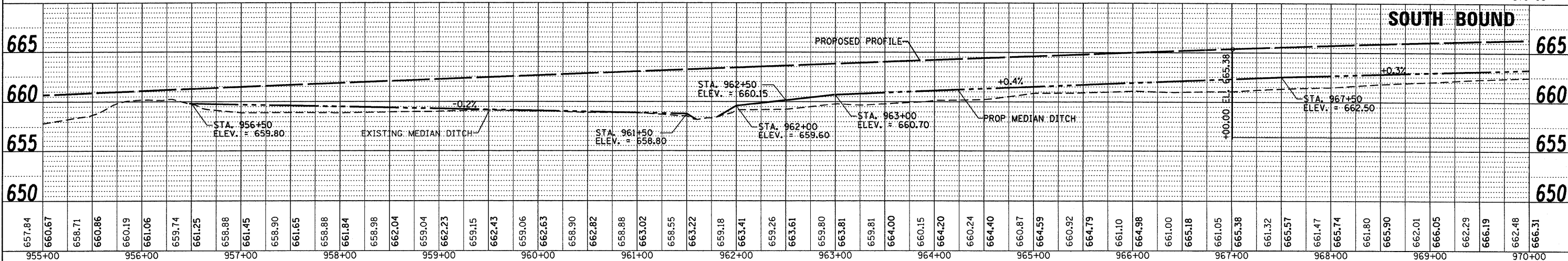
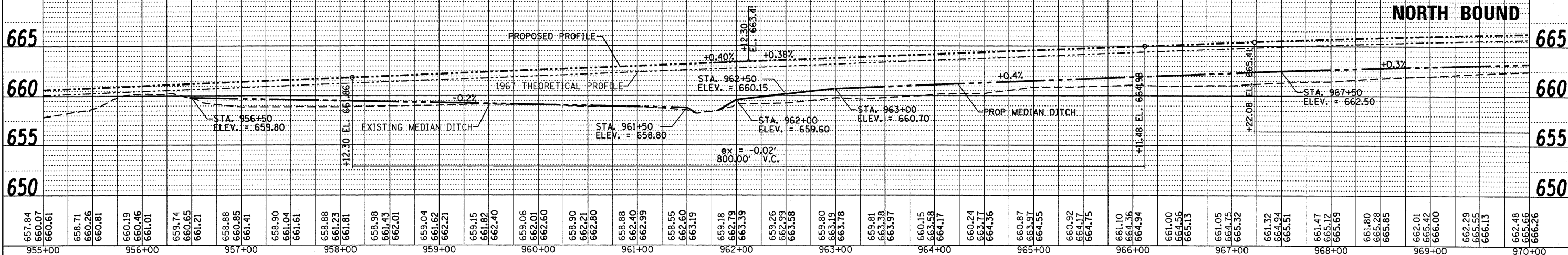
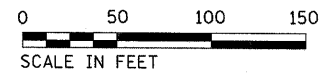
MATCHLINE STA. 970 + 00

PLAN	REVISION	DATE
NO.	NO.	
BY	BY	
CHECKED	CHECKED	
DATE	DATE	



BM 955
 60d NAIL IN FENCE POST AT
 STA. 955+00, 125' RT.
 ELEV. = 659.15

BM 960
 P.T. BRASS PLUG @ I-57
 STA. 960+90
 ELEV. = 658.88



PROFILE	REVISION	DATE
NO.	NO.	
BY	BY	
CHECKED	CHECKED	
DATE	DATE	

FILE NAME =	USER NAME = duncanbd	DESIGNED -	REVISED -	STATE OF ILLINOIS DEPARTMENT OF TRANSPORTATION	PLAN & PROFILE		F.A.I. RTE.	SECTION	COUNTY	TOTAL SHEETS	SHEET NO.	
c:\pwork\PIWIDOT\DUNCANBD\dms30392\ep05	05-shr-plnprf-main.dgn	CHECKED -	REVISED -		SCALE: 1=50	SHEET NO. 4 OF 18 SHEETS	STA. 955+00 TO STA. 970+00	57	(38-1,2)RS-2 & I	IROQUOIS	263	25
		PLOT SCALE = 50.0000' / IN.	REVISED -									
		PLOT DATE = Oct 21, 2009 - 09:24:00 AM	CHECKED -									
											CONTRACT NO. 66981	
											[ILLINOIS] FED. AID PROJECT	