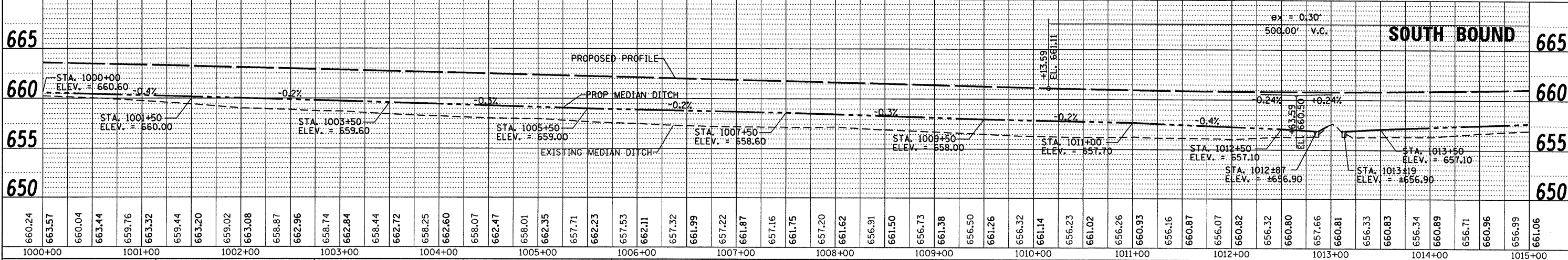
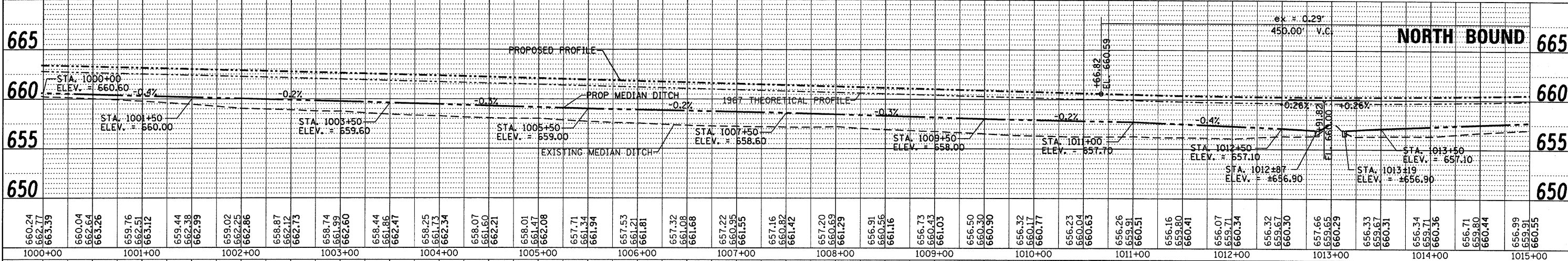
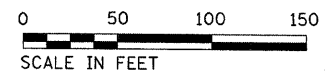
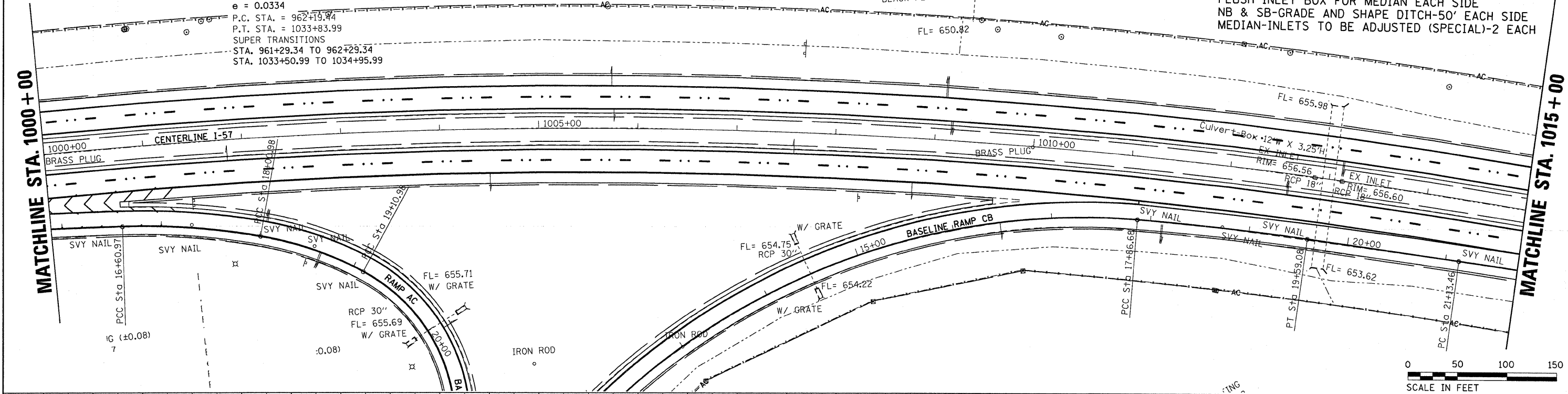


PI STA. = 1003+55.60  
 $\Delta = 71^\circ 40' 01''$  (RT)  
 $D = 1^\circ 00' 01''$   
 $R = 5,727.86'$   
 $T = 4,136.16'$   
 $L = 7,164.55'$   
 $E = 1,337.28'$   
 $e = 0.0334$   
 P.C. STA. = 962+19.94  
 P.T. STA. = 1033+83.99  
 SUPER TRANSITIONS  
 STA. 961+29.34 TO 962+29.34  
 STA. 1033+50.99 TO 1034+95.99

RAMP AC STA 20+00  
 30"X52" RCCP WITH INLET BOX EACH END  
 NO WORK

RAMP CB STA 14+50  
 30"X52" RCCP WITH INLET BOX EACH END  
 RT - CLEAN INLET BOX

SN 038-2507  
 STA 1013+00  
 12'X3'X139" BOX CULVERT  
 12'X6' SS TYPE 1 WITH  
 FLUSH INLET BOX FOR MEDIAN EACH SIDE  
 NB & SB-GRADE AND SHAPE DITCH-50' EACH SIDE  
 MEDIAN-INLETS TO BE ADJUSTED (SPECIAL)-2 EACH



DATE	
BY	
REVISION	
NO.	
DESCRIPTION	
DATE	
BY	
REVISION	
NO.	
DESCRIPTION	

DATE	
BY	
REVISION	
NO.	
DESCRIPTION	
DATE	
BY	
REVISION	
NO.	
DESCRIPTION	

FILE NAME =	USER NAME = duncanbd	DESIGNED -	REVISED -	<b>STATE OF ILLINOIS          DEPARTMENT OF TRANSPORTATION</b>	<b>PLAN &amp; PROFILE</b>			F.A.I. SECTION COUNTY TOTAL SHEETS SHEET NO.
ct:\pwork\PIW100T\DUNCANBD\dms38392\ep05	05-shr-plnprf-main.dgn	CHECKED -	REVISED -		57 (38-1,2)RS-2 & I IROQUOIS 263 28			
PLOT SCALE = 58.0000" / IN.		DRAWN -	REVISED -		SCALE: 1=50 SHEET NO. 7 OF 18 SHEETS STA. 1000+00 TO STA. 1015+00			CONTRACT NO. 66981
PLOT DATE = Oct 21, 2009 - 09:28:35 AM		CHECKED -	REVISED -		ILLINOIS FED. AID PROJECT			