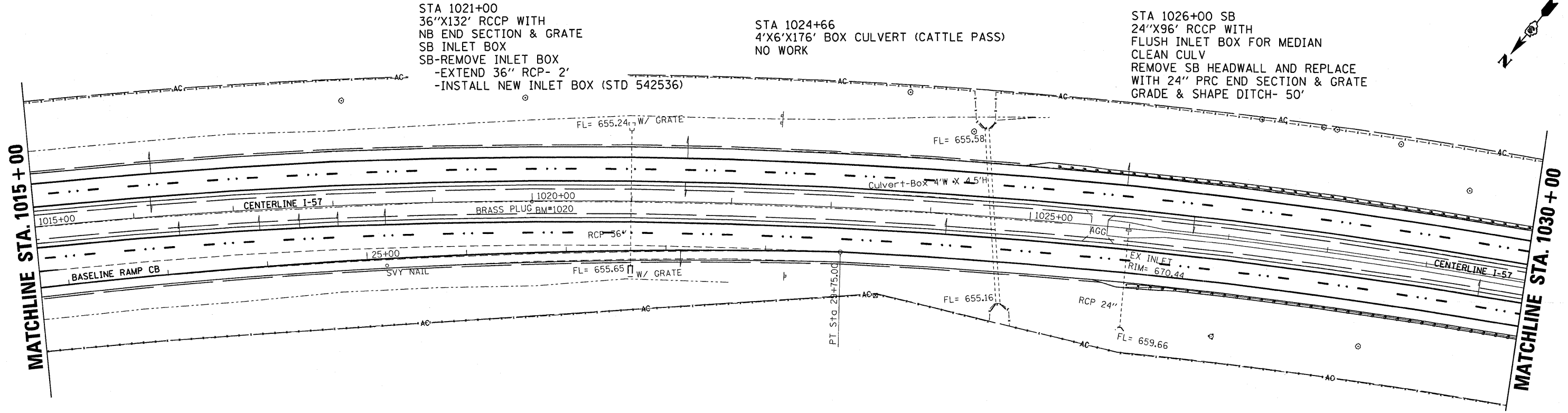
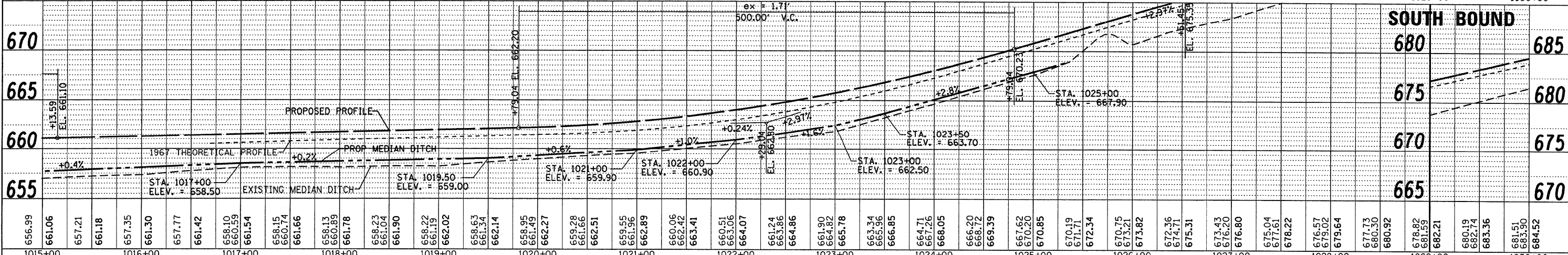
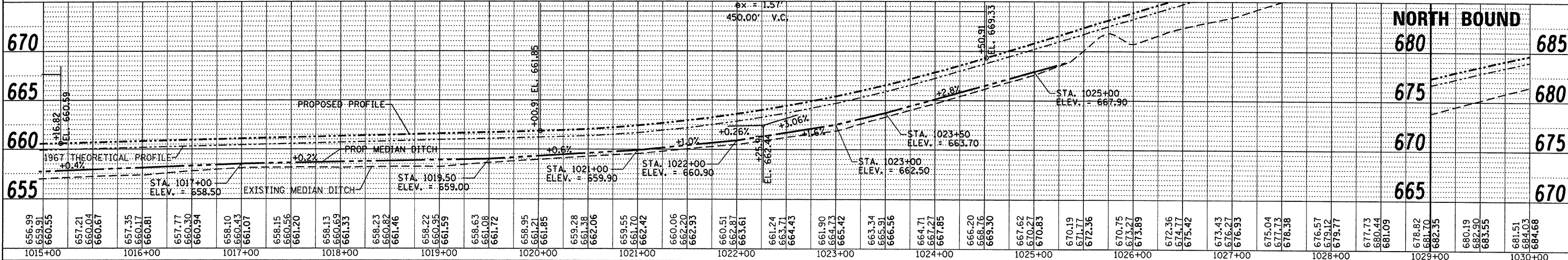
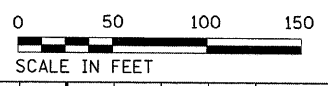


DATE	
BY	
PLANNED	
NOTED	
CHECKED	
FILE NO.	

DATE	
BY	
PROFILING	
NOTED	
CHECKED	
FILE NO.	



BM 1020
P.O.C. BRASS PLUG @ I-57
STA. 1020+00
ELEV. = 658.81



FILE NAME =	USER NAME = duncanbd	DESIGNED -	REVISED -	STATE OF ILLINOIS DEPARTMENT OF TRANSPORTATION	PLAN & PROFILE			F.A.I. RTE.	SECTION	COUNTY	TOTAL SHEETS	SHEET NO.
ct:\pwork\p\WID01\DUNCANB0\dms30392\ep05	05-ah-t-plnprf-main.dgn	CHECKED -	REVISED -		57	(38-1,2)RS-2 & I	IROQUOIS	263	29			
PLOT SCALE = 50.0000' / IN.		DRAWN -	REVISED -		CONTRACT NO. 66981							
PLOT DATE = Oct 21, 2009 - 09:28:28 AM		CHECKED -	REVISED -		ILLINOIS FED. AID PROJECT							