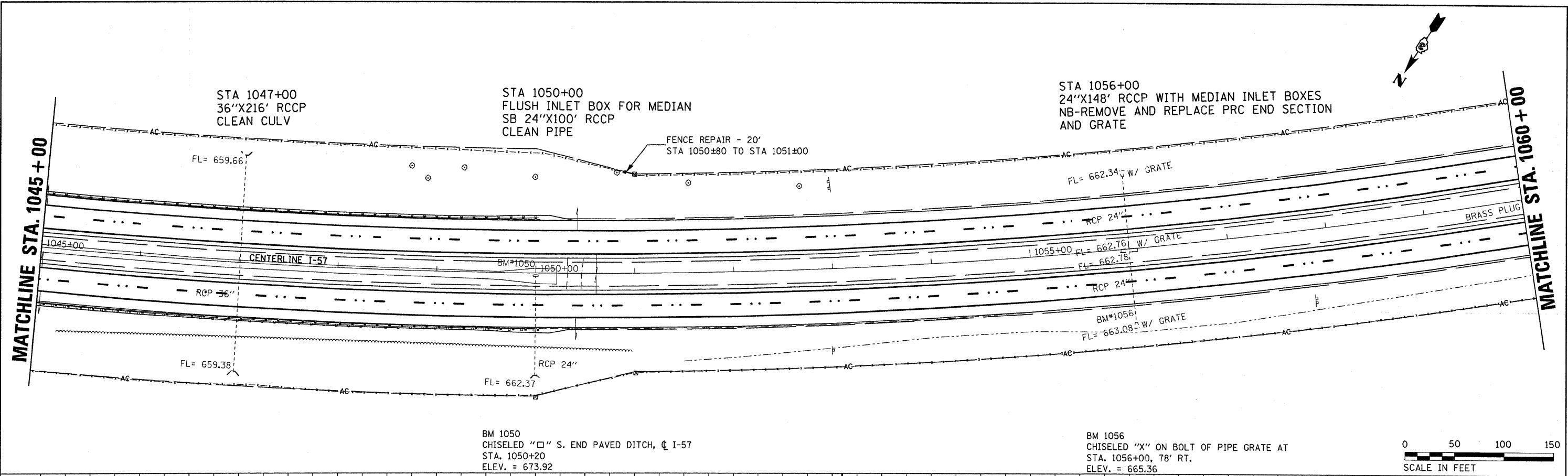


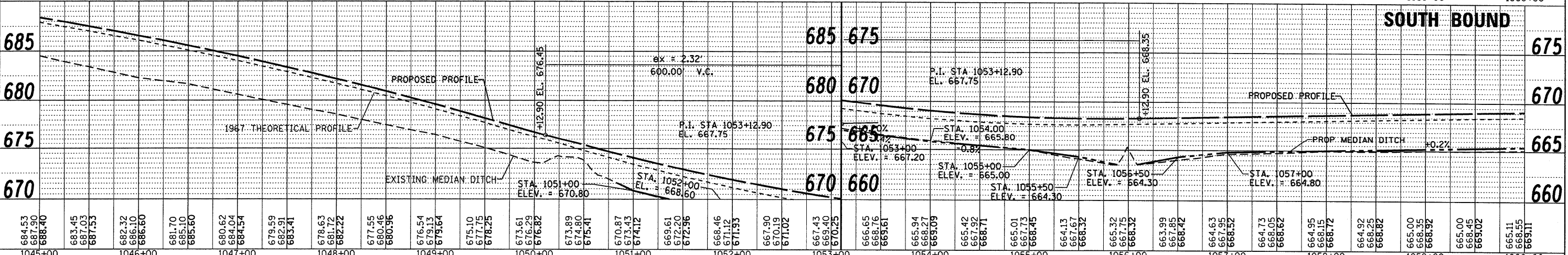
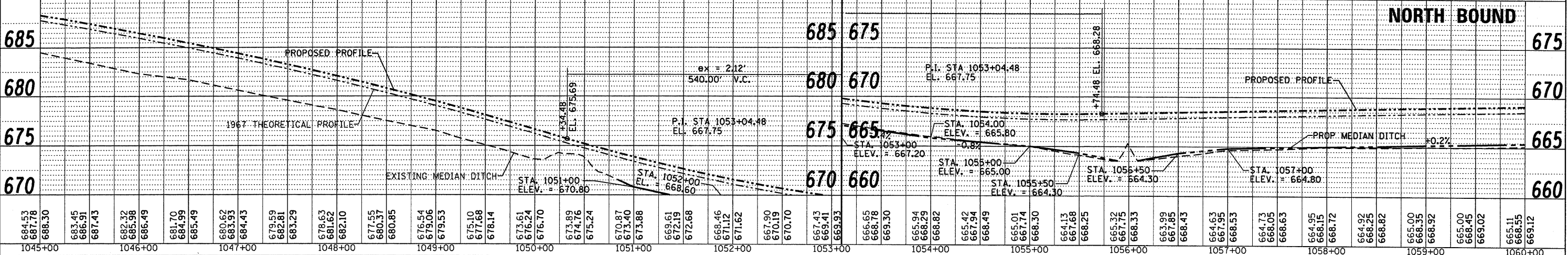
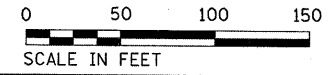
PLAN	DATE
SURVEYED	
ALIGNED	
CHECKED	
BY	
NOTE BOOK	
NO.	

PROFILE	DATE
PLotted	
GRADES CHECKED	
BY	
NOTE BOOK	
NO.	



BM 1050
CHISELED "□" S. END PAVED DITCH, C I-57
STA. 1050+20
ELEV. = 673.92

BM 1056
CHISELED "X" ON BOLT OF PIPE GRATE AT
STA. 1056+00, 78' RT.
ELEV. = 665.36



FILE NAME =	USER NAME = duncanbd	DESIGNED -	REVISED -	STATE OF ILLINOIS DEPARTMENT OF TRANSPORTATION	PLAN & PROFILE			F.A.I. RTE.	SECTION	COUNTY	TOTAL SHEETS	SHEET NO.
c:\pwork\PIWID01\DUNCANBD\dms30392\ep05	05-ahp\p\prf-main.dgn	CHECKED -	REVISED -		57	(38-1,2)RS-2 & I	IROQUOIS	263	31			
PLOT SCALE = 50.0000' / IN.		DRAWN -	REVISED -		SCALE: 1=50			SHEET NO. 10 OF 18 SHEETS			STA. 1045+00 TO STA. 1060+00	
PLOT DATE = Oct 21, 2009 - 09:26:14 AM		CHECKED -	REVISED -		CONTRACT NO. 66981			[ILLINOIS] FED. AID PROJECT				