

COORDINATE TABLE			
STATION	OFFSET	NORTHING	EASTING
P.O.T. 545+00.00	0.00	1,426,854.9994	2,220,906.2103
F.A.S. RTE. 685 PROP. CURVE IL9EXCL3:			
P.C. 556+01.35	0.00	1,426,868.0246	2,219,804.9380
P.L. 559+68.35	0.00	1,426,872.3650	2,219,437.9636
P.T. 563+35.31	0.00	1,426,886.0120	2,219,071.2175
STA. EON. 563+35.31 (BK) = 563+35.80 (AH)	0.00	1,426,886.0120	2,219,071.2175
STA. EON. 563+48.48 (IL 9) = 10+00.00 (E2400)	0.00	1,426,886.4834	2,219,058.5481
P.O.T. 564+97.10	0.00	1,426,892.0100	2,218,910.0290
F.A.S. RTE. 685 PROP. CURVE IL9EXCL4:			
P.C. 580+55.08	0.00	1,426,949.9440	2,217,353.1252
P.L. 584+24.78	0.00	1,426,963.6915	2,216,983.6780
P.T. 587+94.46	0.00	1,426,985.3464	2,216,614.6099
P.O.T. 587+94.46	0.00	1,426,985.3464	2,216,614.6099
P.O.T. 596+75.17	0.00	1,427,036.9330	2,215,735.4097

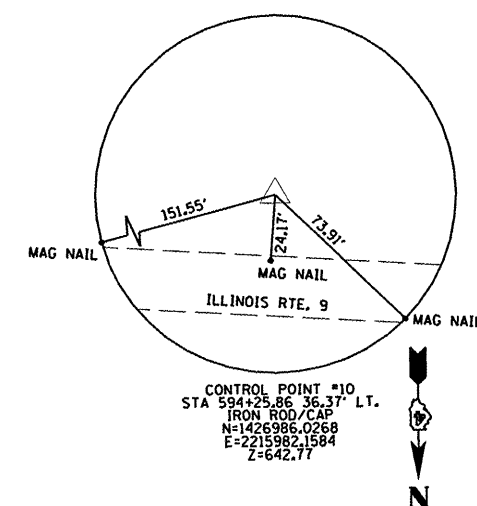
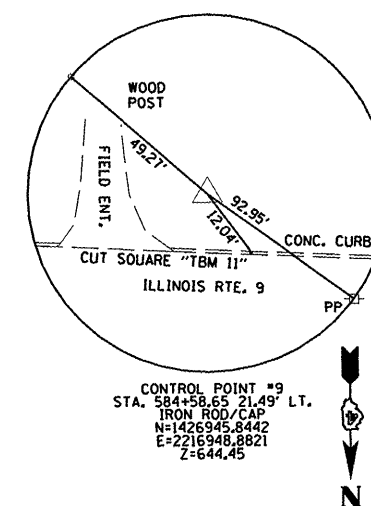
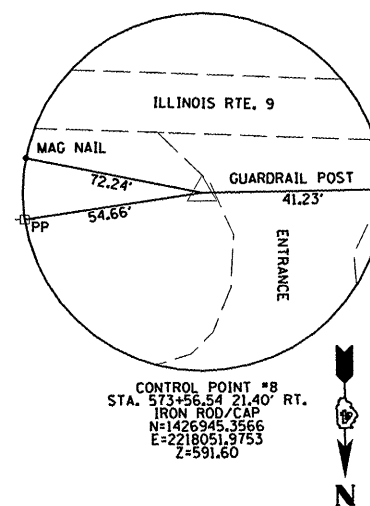
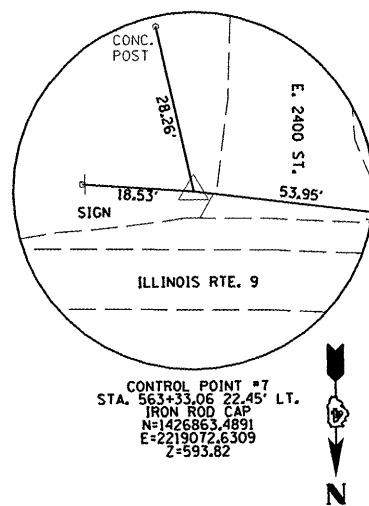
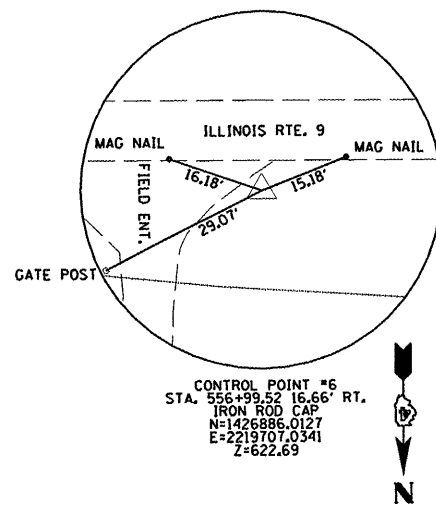
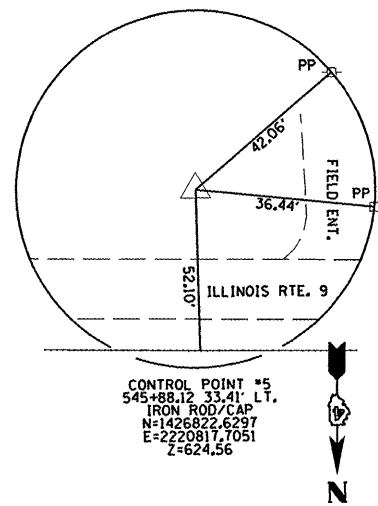
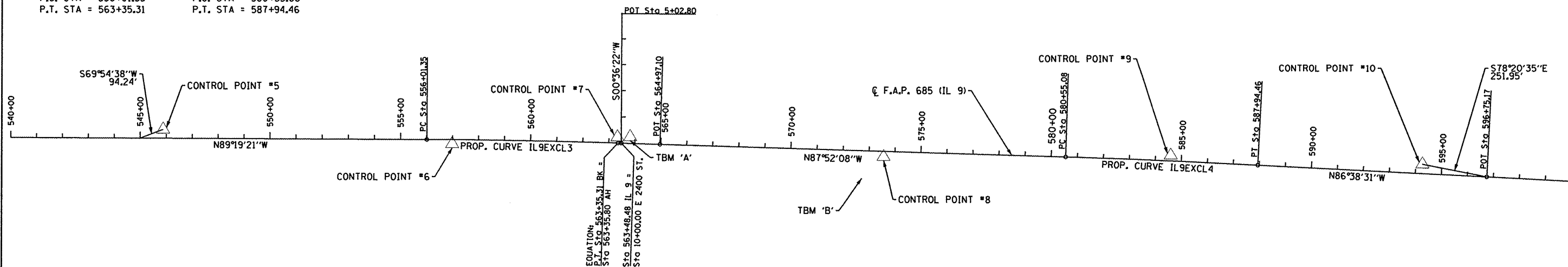
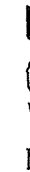
PROP. CURVE IL9EXCL3  
 PI STA. = 559+68.35  
 $\Delta = 1^\circ 27' 12''$  (RT)  
 $D = 0^\circ 11' 53''$   
 $R = 28,933.69'$   
 $T = 367.00'$   
 $L = 733.96'$   
 $E = 2.33'$   
 $e = \text{-----}$   
 $T.R. = \text{-----}$   
 $S.E. RUN = \text{-----}$   
 P.C. STA = 556+01.35  
 P.T. STA = 563+35.31

PROP. CURVE IL9EXCL4  
 PI STA. = 584+24.78  
 $\Delta = 1^\circ 13' 37''$  (RT)  
 $D = 0^\circ 09' 57''$   
 $R = 34,528.43'$   
 $T = 369.70'$   
 $L = 739.38'$   
 $E = 1.98'$   
 $e = \text{-----}$   
 $T.R. = \text{-----}$   
 $S.E. RUN = \text{-----}$   
 P.C. STA = 580+55.08  
 P.T. STA = 587+94.46

**BENCHMARKS:**

TBM "A" CHISEL SQUARE IN CENTER OF HEADWALL FOR 16" CMP 24.5' SOUTH OF THE CENTERLINE OF ROUTE 9 AND 36' WEST OF THE CENTERLINE OF OF E. 2400 STREET. ELEVATION = 590.98

TBM "B" CHISEL "L" ON THE SOUTHWEST CORNER OF CONCRETE HEADWALL OF A WATER STORAGE STRUCTURE AT A WATER TREATMENT PLANT FOR VILLAGE OF PRAIRIE CITY, APPROXIMATELY 108' NORTH OF THE CENTERLINE OF ROUTE 9 AT STATION 572+85 +/- . ELEVATION = 596.96



STATE OF ILLINOIS  
 DEPARTMENT OF TRANSPORTATION

ALIGNMENT, TIES AND BENCHMARKS

SCALE: N.T.S. SHEET NO. 1 OF 1 SHEET

F.A.P. RTE. 685	SECTION 37BR-1	COUNTY MCDONOUGH/JULIEN	TOTAL SHEETS 138	SHEET NO. 11
FED. ROAD DIST. NO. [ILLINOIS] FED. AID PROJECT			CONTRACT NO. 68352	

EFK Moen, LLC  
 Civil Engineering Design

FILE NAME \* Z:\08056.Show.Creek\dgn\Design\Final\Plt

USER NAME = jd  
 DESIGNED - JD  
 DRAWN - JD  
 CHECKED - SD  
 PLOT SCALE = 400.0000' / IN.  
 PLOT DATE = 10/16/2009

DESIGNED - JD  
 DRAWN - JD  
 CHECKED - SD  
 DATE - 10/15/09

REVISED -  
 REVISED -  
 REVISED -  
 REVISED -