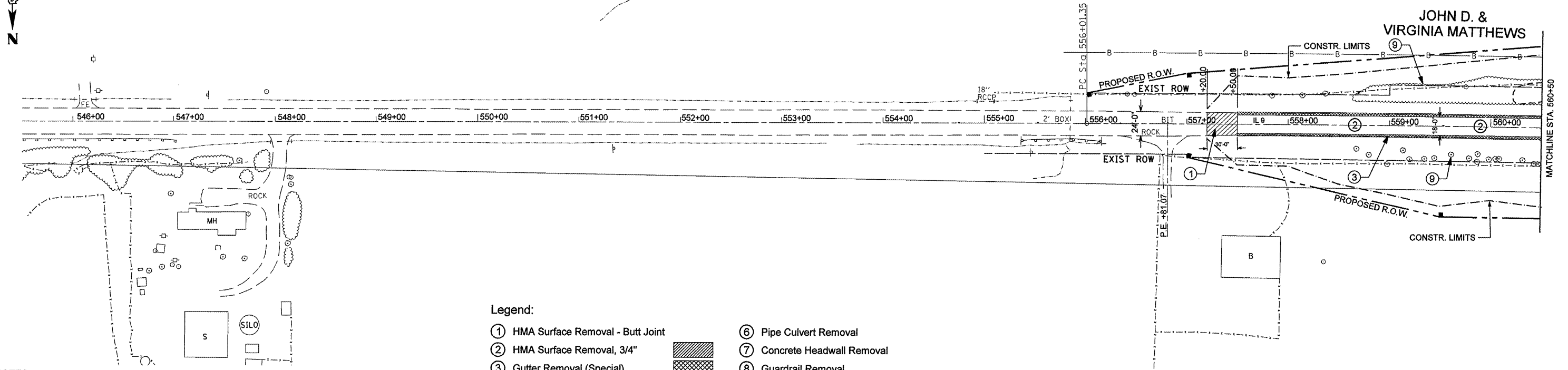


DATE	
BY	
PLAN	
NO. _____	
NOTE BOOK	
NO. _____	
DESIGNED	
CHECKED	
DATE	

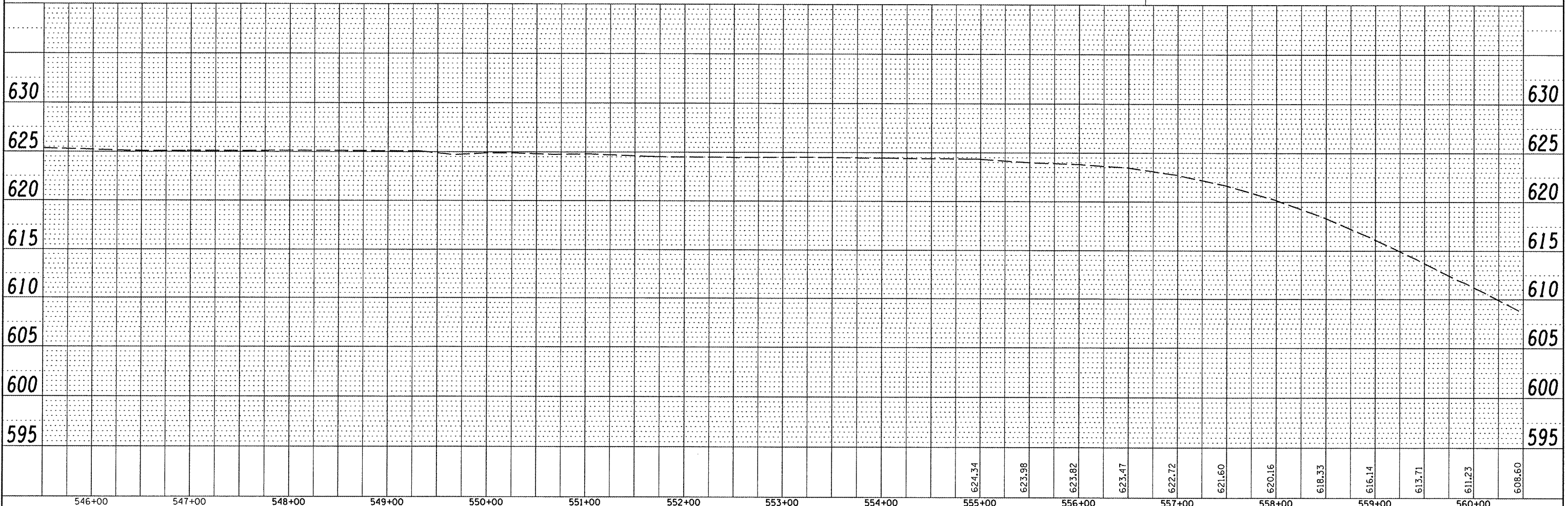
DATE	
BY	
PROFILE	
NO. _____	
NOTE BOOK	
NO. _____	
DESIGNED	
CHECKED	
DATE	



NOTES:  
 1. STRUCTURE REMOVAL WILL INCLUDE AREA OUTSIDE ABUTMENTS AS SHOWN.  
 2. ALL TREES ARE TO BE REMOVED WITHIN CONSTRUCTION LIMITS.

- Legend:**
- ① HMA Surface Removal - Butt Joint
  - ② HMA Surface Removal, 3/4"
  - ③ Gutter Removal (Special)
  - ④ Pavement Removal
  - ⑤ Structure Removal
  - ⑥ Pipe Culvert Removal
  - ⑦ Concrete Headwall Removal
  - ⑧ Guardrail Removal
  - ⑨ Tree Removal (Acre)
  - ⑩ Driveway Pavement Removal

**EFK Moen, LLC**  
 Civil Engineering Design



FILE NAME =	USER NAME = j.d	DESIGNED -	REVISED -	F.A.P. RTE.	SECTION	COUNTY	TOTAL SHEETS	SHEET NO.
Z:\080956_Shaw_Creek\Design\Final\Plotsheets\12-0468352-sht-exp\inprfl.dgn		DRAWN - JD	REVISED -	685	37BR-1	MCDONOUGH/ FULTON	138	12
PLOT SCALE = 100.0000 / IN.		CHECKED - SD	REVISED -	CONTRACT NO. 68352				
PLOT DATE = 10/16/2009		DATE - 10/15/09	REVISED -	SCALE: 1" = 50' SHEET NO. 1 OF 3 SHEETS STA. 545+50.00 TO STA. 560+50.00				
				FED. ROAD DIST. NO. ILLINOIS FED. AID PROJECT				

**STATE OF ILLINOIS**  
**DEPARTMENT OF TRANSPORTATION**

**DESIGN PLAN AND PROFILE (EXISTING & REMOVALS)**