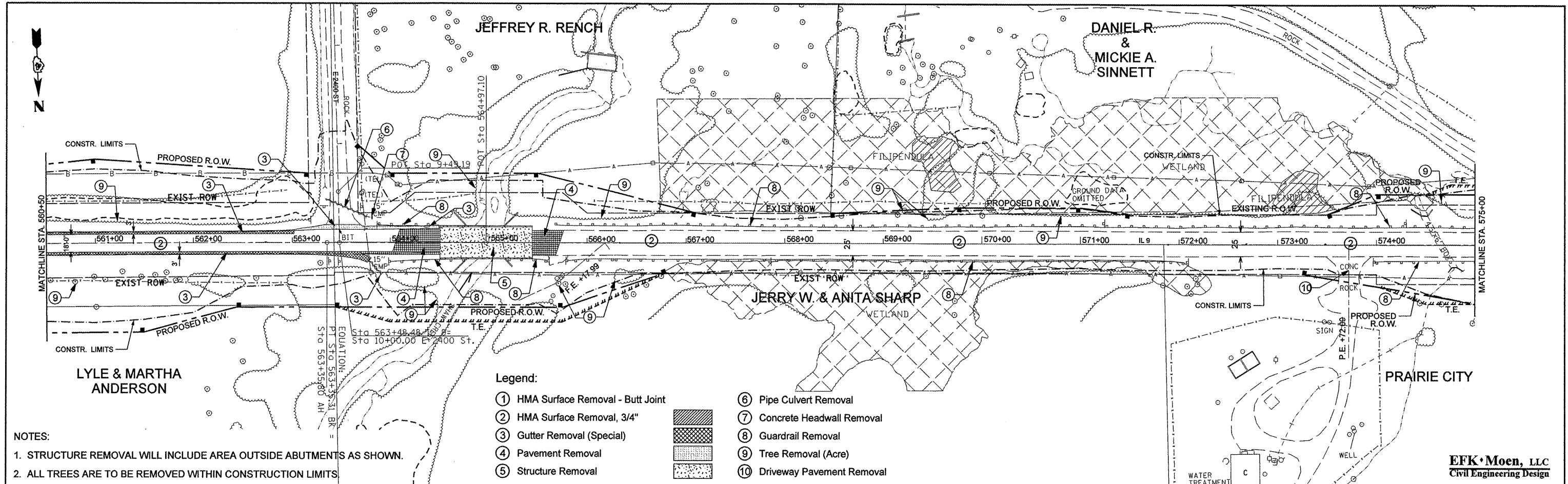


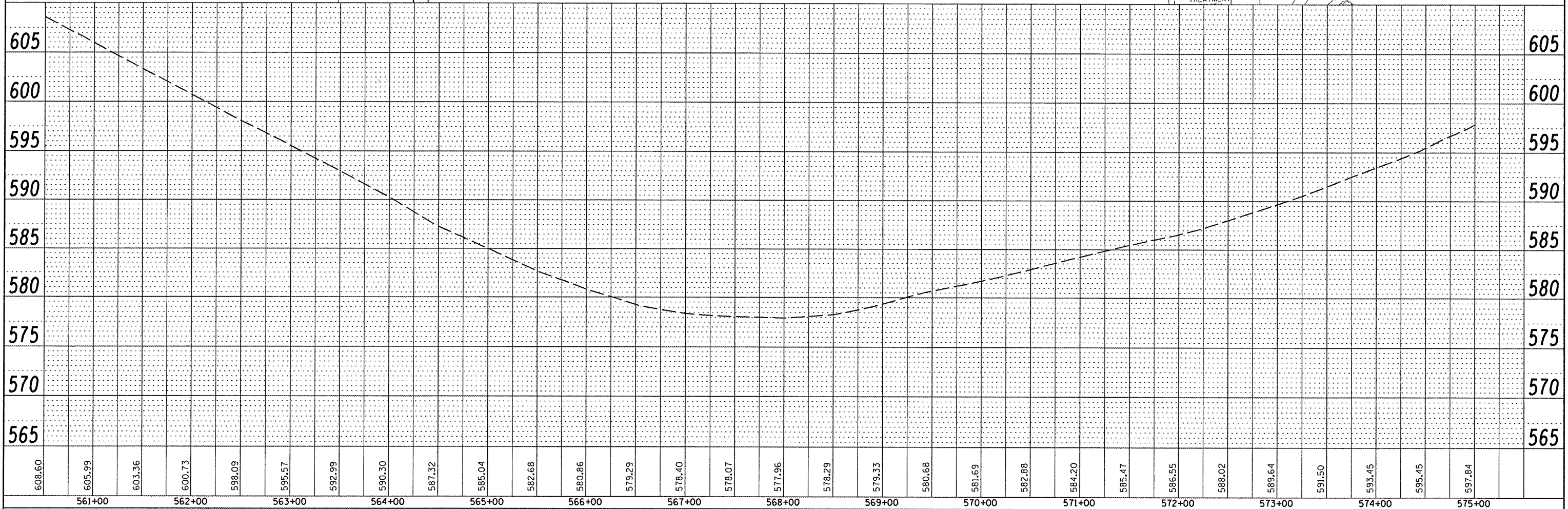
DATE	
BY	
DESIGNED	
PLOTTED	
GRADES CHECKED	
ALIGNMENT CHECKED	
NO. /	
NOTE BOOK	
NO.	
FILE NAME	

DATE	
BY	
DESIGNED	
PLOTTED	
GRADES CHECKED	
STRUCTURE NOTATIONS CHKD	
NO. /	
NOTE BOOK	
NO.	



**NOTES:**  
 1. STRUCTURE REMOVAL WILL INCLUDE AREA OUTSIDE ABUTMENTS AS SHOWN.  
 2. ALL TREES ARE TO BE REMOVED WITHIN CONSTRUCTION LIMITS.

- Legend:**
- ① HMA Surface Removal - Butt Joint
  - ② HMA Surface Removal, 3/4"
  - ③ Gutter Removal (Special)
  - ④ Pavement Removal
  - ⑤ Structure Removal
  - ⑥ Pipe Culvert Removal
  - ⑦ Concrete Headwall Removal
  - ⑧ Guardrail Removal
  - ⑨ Tree Removal (Acre)
  - ⑩ Driveway Pavement Removal



FILE NAME	USER NAME	DESIGNED	REVISED	<b>STATE OF ILLINOIS</b> <b>DEPARTMENT OF TRANSPORTATION</b>	<b>DESIGN PLAN AND PROFILE (EXISTING &amp; REMOVALS)</b>	F.A.P. RTE.	SECTION	COUNTY	TOTAL SHEETS	SHEET NO.	
2:\080856.Show.Creek\dgn\Design\Final\PlotSheets\13-0468352-sht-exp1nprf2.dgn	jd	DRAWN - JD	REVISED -			685	37BR-1	MCDONOUGH	138	13	
PLOT SCALE 100.0000' / IN.	CHECKED - SD	REVISED -	DATE - 10/15/09			CONTRACT NO. 68352					
PLOT DATE 10/16/2009	DATE - 10/15/09	REVISED -	FED. ROAD DIST. NO. ILLINOIS FED. AID PROJECT								

SCALE: 1" = 50' SHEET NO. 2 OF 3 SHEETS STA. 560+50.00 TO STA. 575+00.00

**EFK Moen, LLC**  
 Civil Engineering Design