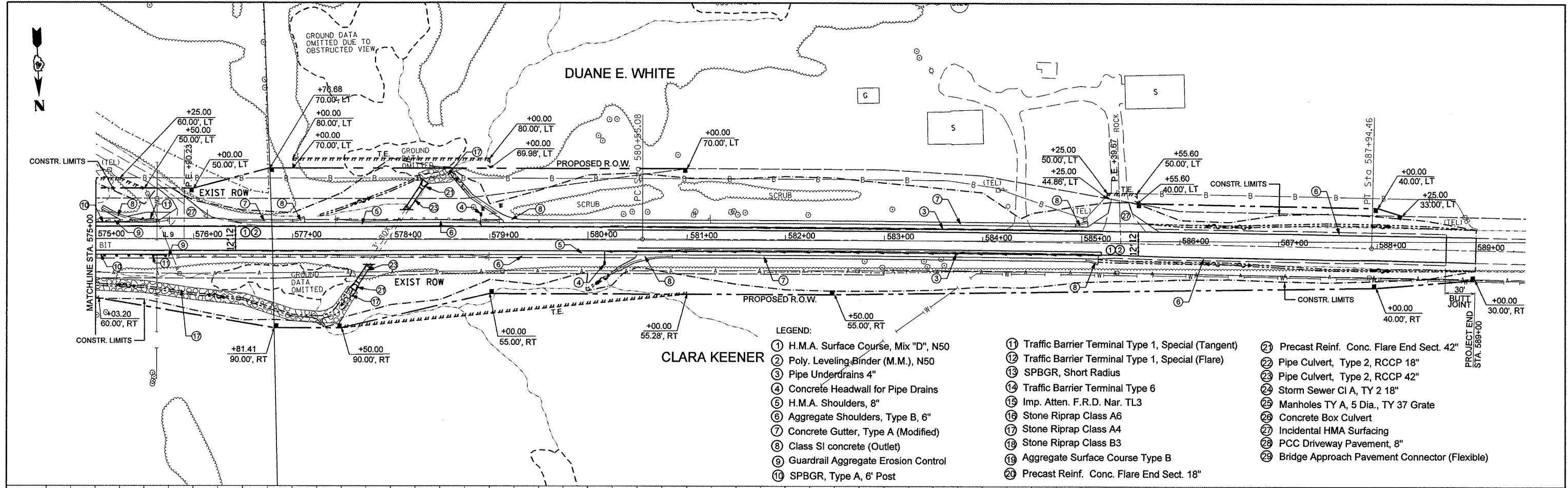


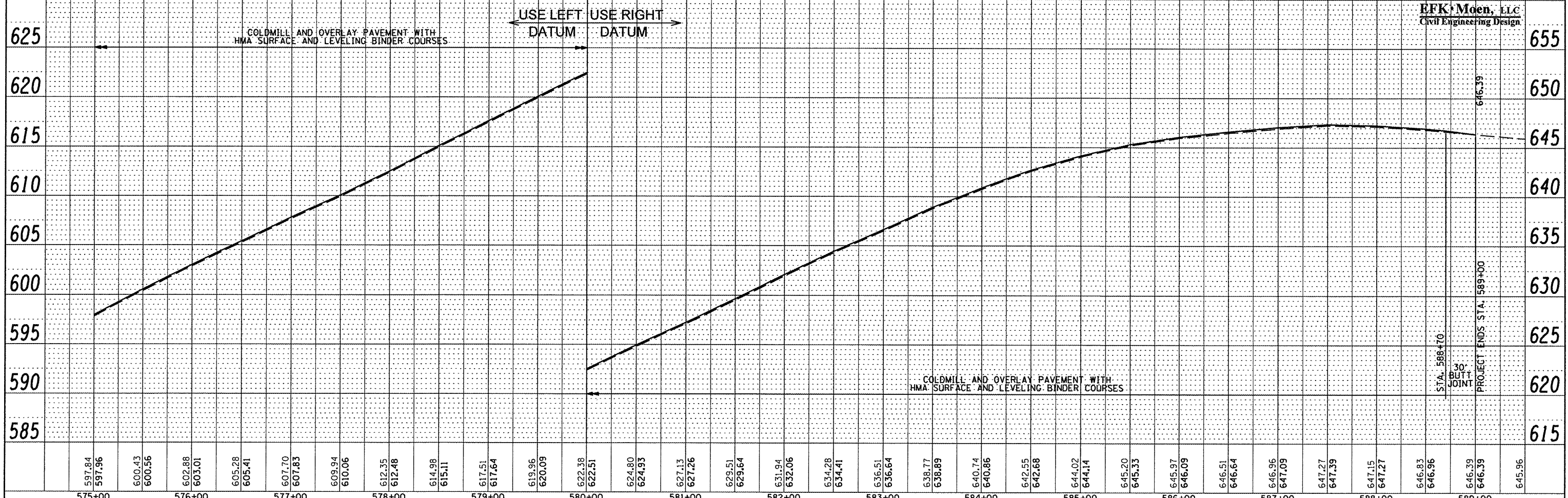
DATE	
BY	
DESIGNED	
CHECKED	
DATE	
NO.	

DATE	
BY	
DESIGNED	
CHECKED	
DATE	
NO.	



CLARA KEENER

- LEGEND:
- ① H.M.A. Surface Course, Mix "D", N50
 - ② Poly. Leveling Binder (M.M.), N50
 - ③ Pipe Underdrains 4"
 - ④ Concrete Headwall for Pipe Drains
 - ⑤ H.M.A. Shoulders, 8"
 - ⑥ Aggregate Shoulders, Type B, 6"
 - ⑦ Concrete Gutter, Type A (Modified)
 - ⑧ Class SI concrete (Outlet)
 - ⑨ Guardrail Aggregate Erosion Control
 - ⑩ SPBGR, Type A, 6' Post
 - ⑪ Traffic Barrier Terminal Type 1, Special (Tangent)
 - ⑫ Traffic Barrier Terminal Type 1, Special (Flare)
 - ⑬ SPBGR, Short Radius
 - ⑭ Traffic Barrier Terminal Type 6
 - ⑮ Imp. Atten. F.R.D. Nar. TL3
 - ⑯ Stone Riprap Class A6
 - ⑰ Stone Riprap Class A4
 - ⑱ Stone Riprap Class B3
 - ⑲ Aggregate Surface Course Type B
 - ⑳ Precast Reinf. Conc. Flare End Sect. 18"
 - ㉑ Precast Reinf. Conc. Flare End Sect. 42"
 - ㉒ Pipe Culvert, Type 2, RCCP 18"
 - ㉓ Pipe Culvert, Type 2, RCCP 42"
 - ㉔ Storm Sewer CI A, TY 2 18"
 - ㉕ Manholes TY A, 5 Dia., TY 37 Grate
 - ㉖ Concrete Box Culvert
 - ㉗ Incidental HMA Surfacing
 - ㉘ PCC Driveway Pavement, 8"
 - ㉙ Bridge Approach Pavement Connector (Flexible)



FILE NAME *	USER NAME * jd	DESIGNED -	REVISED -	STATE OF ILLINOIS DEPARTMENT OF TRANSPORTATION		DESIGN PLAN AND PROFILE		F.A.P. RTE.	SECTION	COUNTY	TOTAL SHEETS	SHEET NO.
Z:\08055_Shaw_Creek\Design\Final\Plot\heats\17-0468352-sh1-plnprf3.dgn	DRAWN - JD	REVISED -	REVISED -					685	37BR-1	MCDONOUGH/PULTON	138	17
PLOT SCALE = 100.0000' / IN.	CHECKED - SD	REVISED -	REVISED -					CONTRACT NO. 68352				
PLOT DATE = 10/16/2009	DATE = 10/15/09	REVISED -	REVISED -					FED. ROAD DIST. NO. ILLINOIS FED. AID PROJECT				