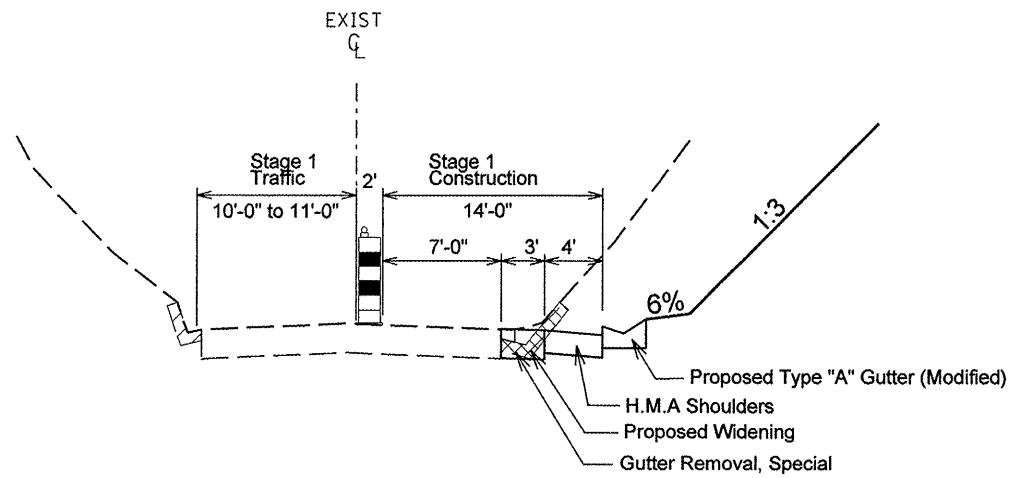
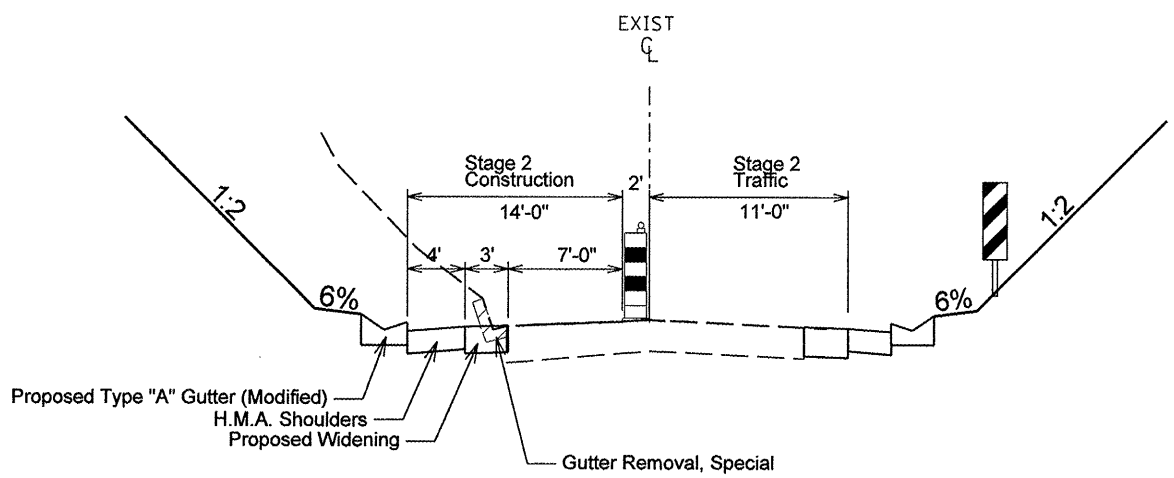


STAGE 1



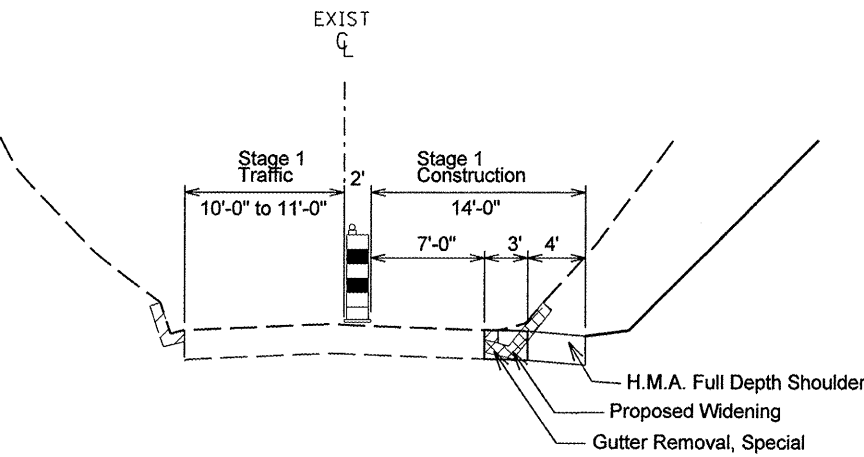
STA. 557+50 TO STA. 563+03.25

STAGE 2



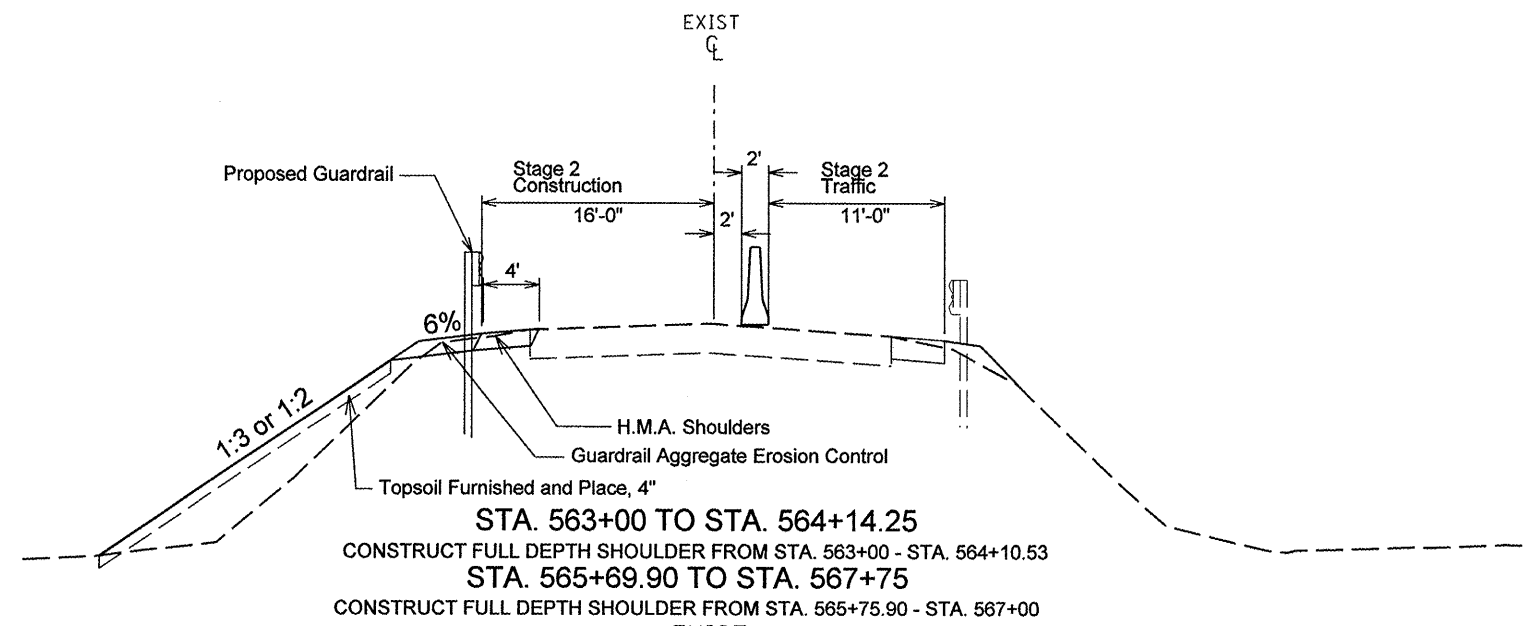
STA. 557+50 TO STA. 563+00

EXIST



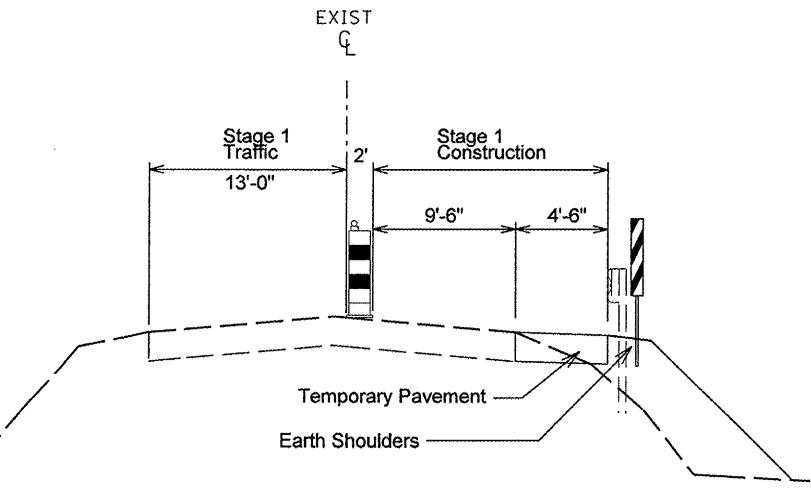
STA. 563+03.25 TO STA. 564+02.64
STA. 566+12.76 TO STA. 568+50.00

EXIST



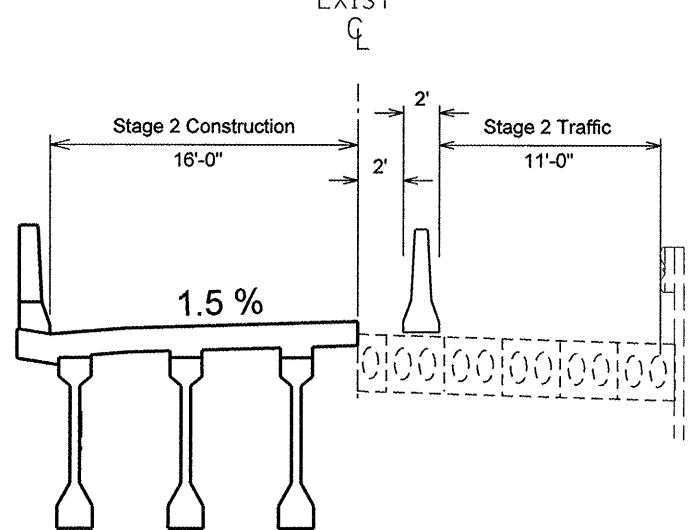
STA. 563+00 TO STA. 564+14.25
CONSTRUCT FULL DEPTH SHOULDER FROM STA. 563+00 - STA. 564+10.53
STA. 565+69.90 TO STA. 567+75
CONSTRUCT FULL DEPTH SHOULDER FROM STA. 565+75.90 - STA. 567+00

EXIST



STA. 564+02.64 TO STA. 564+50.50*
STA. 565+44.04 TO STA. 566+12.76*
* TEMPORARY PAVEMENT TO BE REPLACED WITH BRIDGE APPROACH PAVEMENT, BRIDGE, SHOULDER AND ENTRANCE IN STAGE 3

EXIST



STA. 564+11.33 TO STA. 565+66.00*
* INCLUDES BRIDGE APPROACH PAVEMENT

NOTES:
TWO CHANGEABLE MESSAGE SIGNS (CMS) SHALL BE PLACED IN ADVANCE OF THE PROJECT FOR BOTH DIRECTIONS OF TRAVEL FOR ONE WEEK PRIOR TO THE START OF CONSTRUCTION. THE CMS MAY THEN BE REMOVED AND USED AT THE DISCRETION OF THE ENGINEER. THE COST OF THE SETTING, REMOVING, AND MAINTAINING SHALL BE INCLUDED IN THE COST OF THE PAY ITEM.

EFK Moen, LLC
Civil Engineering Design

STATE OF ILLINOIS
DEPARTMENT OF TRANSPORTATION

STAGING AND TRAFFIC CONTROL

F.A.P. RTE.	SECTION	COUNTY	TOTAL SHEETS	SHEET NO.
685	37BR-1	MCDONOUGH/FULTON	138	18
FED. ROAD DIST. NO. - ILLINOIS			FED. AID PROJECT	

SCALE: N.T.S. SHEET NO. 1 OF 16 SHEETS

FILE NAME =	USER NAME = jld	DESIGNED -	REVISD -
Z:\08056.Shaw.Creek\dgn\Design\Final\Plotsheets\18-D468352-sht-stagingtyp1.dgn		DRAWN - JD	REVISD -
		CHECKED - SD	REVISD -
		DATE - 10/15/09	REVISD -