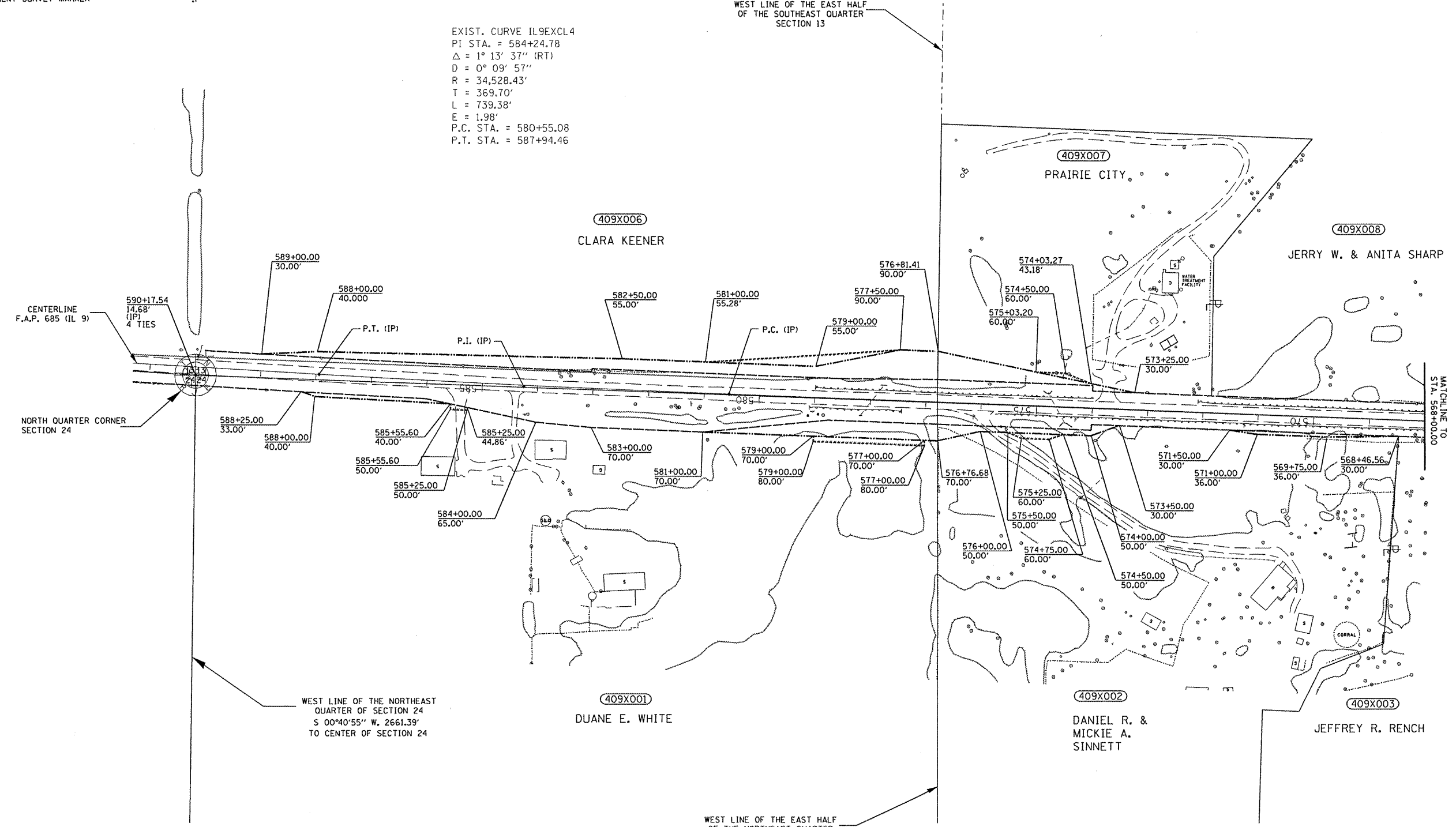


LEGEND  
 PROPOSED TEMPORARY EASEMENT LINE - - - - -  
 PROPOSED RIGHT OF WAY LINE - - - - -  
 EXISTING RIGHT OF WAY LINE - - - - -  
 PERMANENT SURVEY MARKER IP

SECTION 13 T7N R1W

EXIST. CURVE IL9EXCL4  
 PI STA. = 584+24.78  
 $\Delta = 1^\circ 13' 37''$  (RT)  
 $D = 0^\circ 09' 57''$   
 $R = 34,528.43'$   
 $T = 369.70'$   
 $L = 739.38'$   
 $E = 1.98'$   
 P.C. STA. = 580+55.08  
 P.T. STA. = 587+94.46



CORNER	NORTHING	EASTING
NORTHWEST CORNER OF THE NORTHEAST QUARTER OF SECTION 24	1,426,983.760	2,216,391.049

POINT	NORTHING	EASTING
PC	1,426,949.944	2,217,353.125
PI	1,426,963.691	2,216,983.678
PT	1,426,985.346	2,216,614.610

SECTION 24 T7N R1W

STATE OF ILLINOIS  
 DEPARTMENT OF TRANSPORTATION

RIGHT OF WAY PLANS

FILE NAME = Z:\088056_Show_Creek\ dgn\Design\Final\Plotsheets\47-D468352-sht-rw\plan1.dgn	USER NAME = STICKELMAIER	DESIGNED -	REVISED -	SCALE: 1" = 100'	SHEET NO. 1 OF 2 SHEETS	STA. 556+01.35 TO STA. 568+00.00	F.A.P. RTE. 685	SECTION 37BR-1	COUNTY MCDDOUGH/ FULTON	TOTAL SHEETS 138	SHEET NO. 47
PLOT SCALE = 1"=100'	CHECKED -	REVISED -	CONTRACT NO. 68352								
PLOT DATE = 05/04/2009	DATE - 10/15/09	REVISED -	FED. ROAD DIST. NO. ILLINOIS FED. AID PROJECT								