

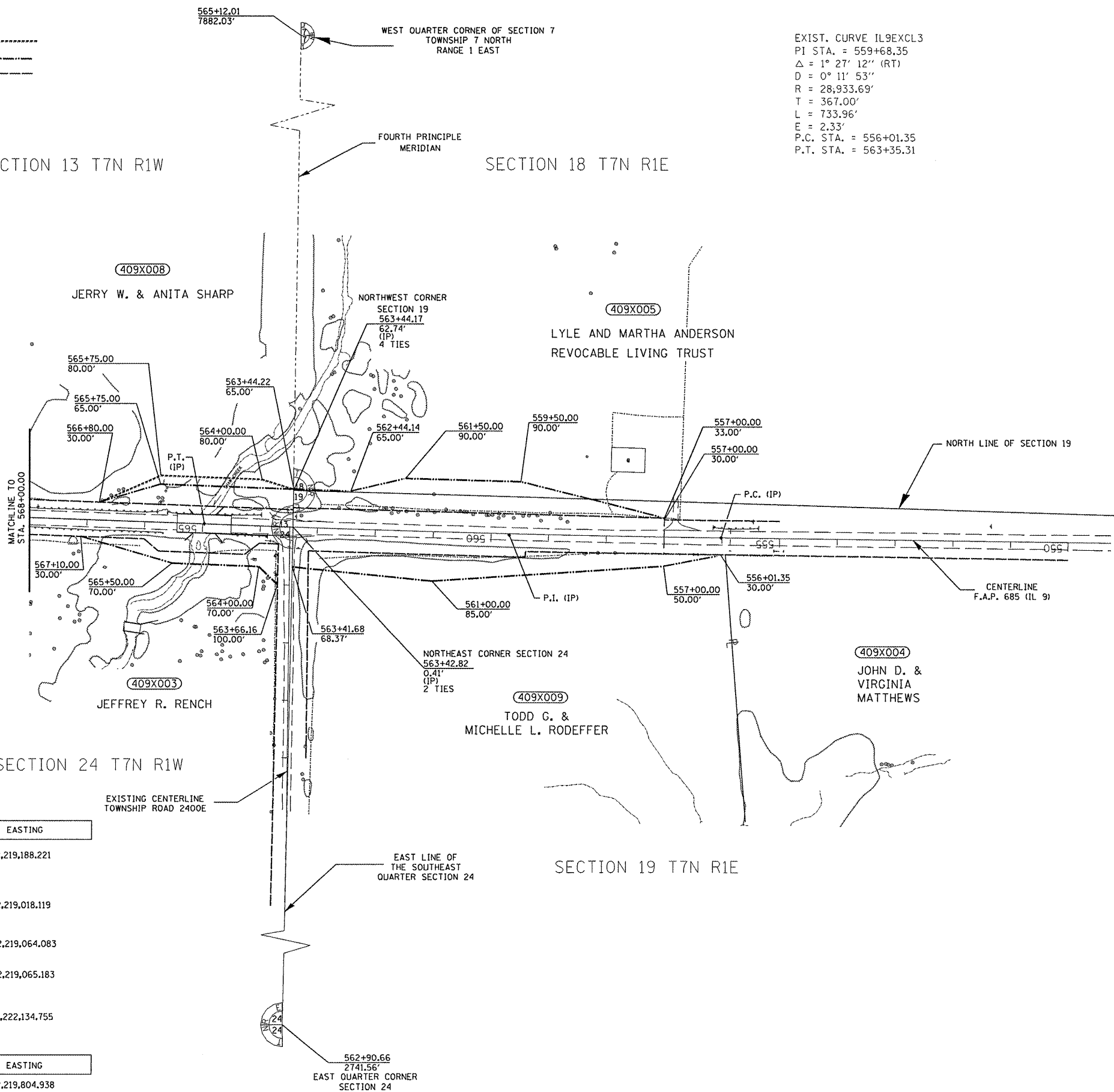
LEGEND
 PROPOSED TEMPORARY EASEMENT LINE - - - - -
 PROPOSED RIGHT OF WAY LINE - - - - -
 EXISTING RIGHT OF WAY LINE - - - - -
 PERMANENT SURVEY MARKER IP

EXIST. CURVE IL9EXCL3
 P1 STA. = 559+68.35
 $\Delta = 1^\circ 27' 12''$ (RT)
 $D = 0^\circ 11' 53''$
 $R = 28,933.69'$
 $T = 367.00'$
 $L = 733.96'$
 $E = 2.33'$
 P.C. STA. = 556+01.35
 P.T. STA. = 563+35.31



SECTION 13 T7N R1W

SECTION 18 T7N R1E



STATION EQUATION:
 STA 563+35.31 BK=
 STA 563+35.80 AH

EAST QUARTER CORNER SECTION 24 TO NORTHEAST CORNER SECTION 24
 $N 00^\circ 57' 46'' E$ Distance 2,741.68'

NORTHEAST CORNER SECTION 24 TO NORTHWEST CORNER SECTION 19
 $N 00^\circ 59' 58'' E$ DISTANCE 63.06'

NORTHWEST CORNER SECTION 19 TO WEST QUARTER CORNER SECTION 7 TOWNSHIP 7 NORTH, RANGE 1 EAST
 $N 00^\circ 54' 05'' E$ DISTANCE 7,821.09'

NORTHWEST CORNER SECTION 19 TO NORTH QUARTER CORNER SECTION 19
 $S 88^\circ 20' 06'' E$ DISTANCE 3,070.87'

NORTHEAST CORNER SECTION 24 TO NORTH QUARTER CORNER SECTION 24
 $N 87^\circ 54' 17'' W$ DISTANCE 2,674.82'

CORNER	NORTHING	EASTING
WEST QUARTER CORNER OF SECTION 7 TOWNSHIP 7 NORTH RANGE 1 EAST	1,434,769.142	2,219,188.221
EAST QUARTER CORNER SECTION 24	1,424,144.569	2,219,018.119
NORTHEAST CORNER SECTION 24	1,426,885.966	2,219,064.083
NORTHWEST CORNER SECTION 19	1,426,949.020	2,219,065.183
NORTHEAST CORNER OF THE NORTHWEST QUARTER OF SECTION 19	1,426,859.794	2,222,134.755

POINT	NORTHING	EASTING
PC	1,426,868.025	2,219,804.938
PI	1,426,872.365	2,219,437.964
PT	1,426,886.012	2,219,071.217

FILE NAME Z:\080956.Shaw.Creek\ dgn\Design\Final\Pl...	USER NAME = STICKELMAIER	DESIGNED -	REVISED -
sheets\48-D468352-sht-rowsplan2.dgn		DRAWN -	REVISED -
PLOT SCALE = 1"=100'		CHECKED -	REVISED -
PLOT DATE = 05/04/2009		DATE - 10/15/09	REVISED -

**STATE OF ILLINOIS
 DEPARTMENT OF TRANSPORTATION**

RIGHT OF WAY PLANS	
PROJECT	JOB NO. R94-009-06
SCALE: 1" = 100'	SHEET NO. 2 OF 2 SHEETS
STA. 568+00.00 TO STA. 589+00.00	

F.A.P. RTE.	SECTION	COUNTY	TOTAL SHEETS	SHEET NO.
685	37BR-1	MCDONOUGH	138	48
CONTRACT NO. 68352				
FED. ROAD DIST. NO. ILLINOIS FED. AID PROJECT				