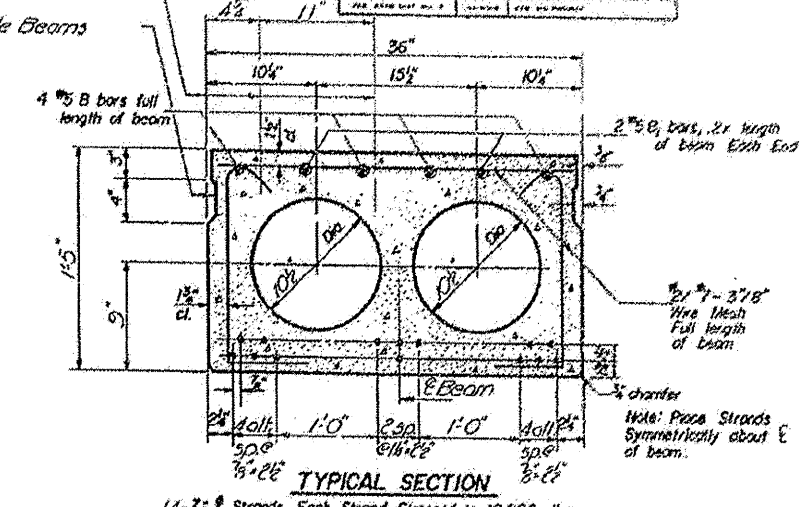
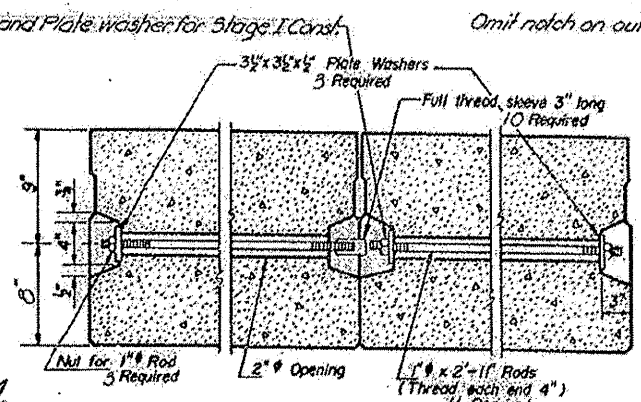
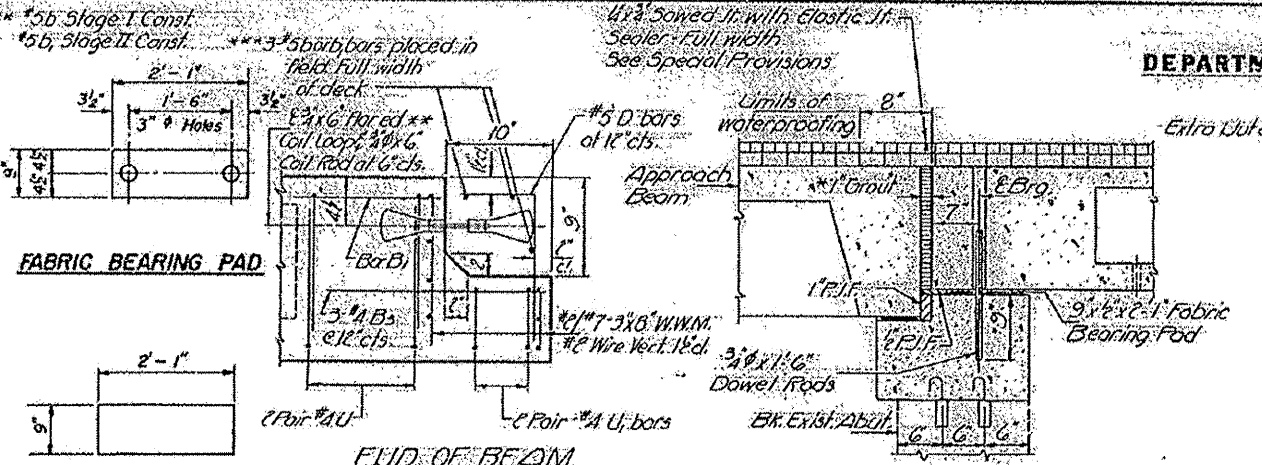


STATE OF ILLINOIS  
DEPARTMENT OF TRANSPORTATION

Location of 2"x6" bolts for Temporary  
Guardrail during Stage II Const.  
See Sh. 3.

PROJECT NO.	9 378R	CONTRACTOR	McDonough	DATE	11 6	SHEET NO.	7
-------------	--------	------------	-----------	------	------	-----------	---



**GRAPHITED ASBESTOS BEARING PAD**

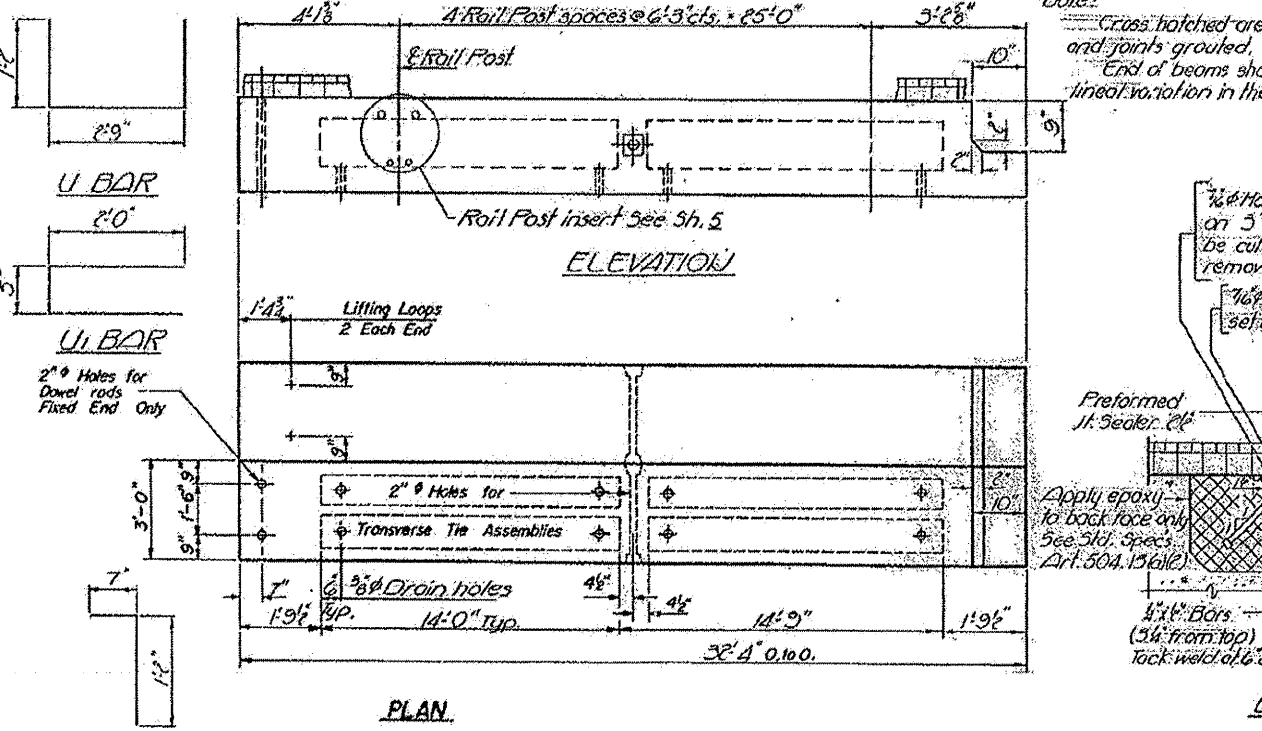
**END OF BEAM EXPANSION JOINT** \*\* Cast incidental to P.P.C. Deck Beams.

**SEC. THRU EAST ABUT. AT OUTSIDE BEAM** \* Joint shall be packed with a very dry mix of 2:1 sand and P.C. mortar between P.P.C.

**TYPICAL TRANSVERSE TIE ASSEMBLY**

**TYPICAL SECTION**

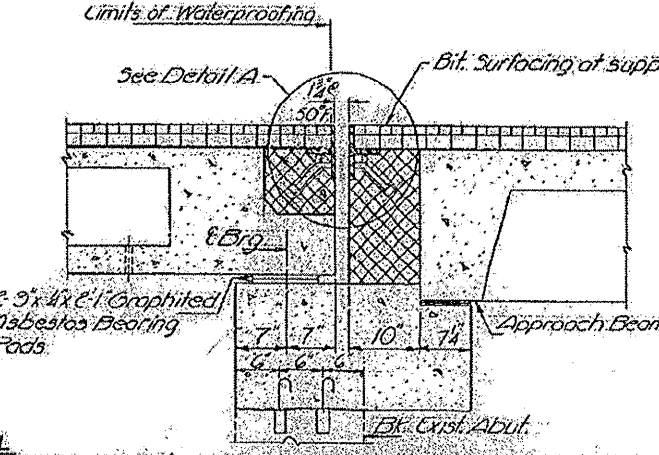
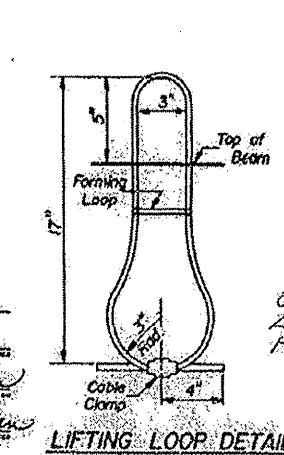
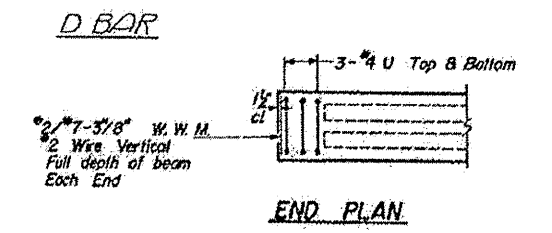
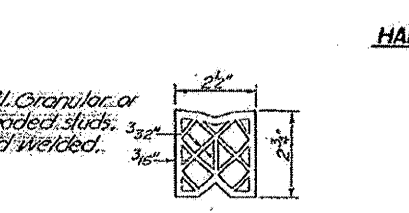
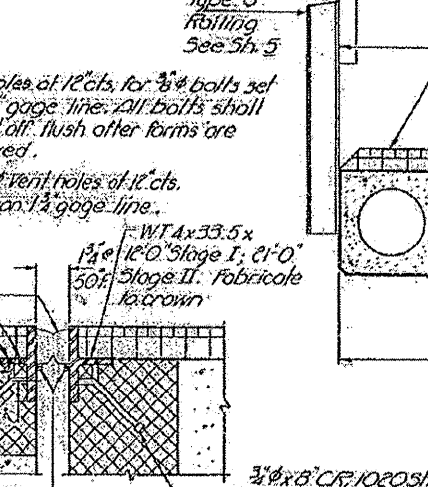
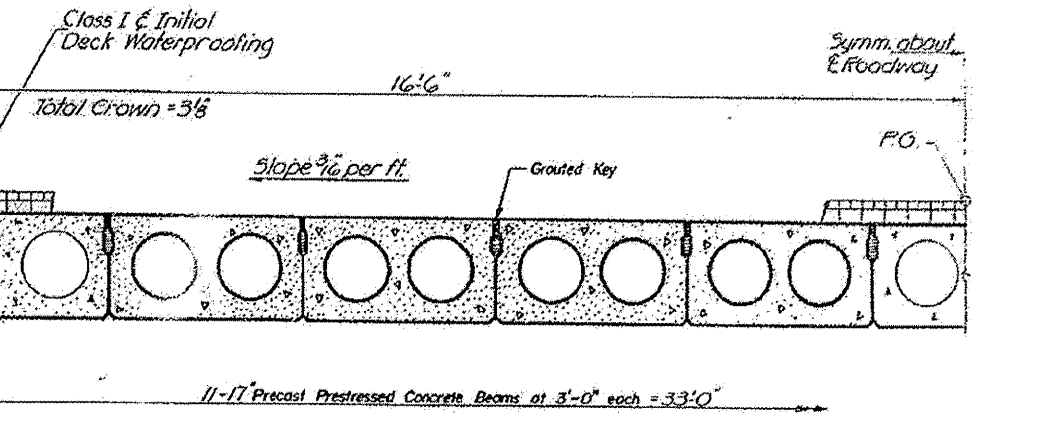
14-7/8" Strands Each Strand Stressed to 18,900 lbs.  
7-Strands 1/2" up 7-Strands 3/4" up



**Notes:**

Cross hatched areas to be poured after beams are in place and joints grouted.

End of beams shall be aligned at the expansion joints. Any linear variation in the beam lengths shall be placed at the fixed Jt.



**GENERAL NOTES**

Prestressing steel shall be non-galvanized high strength, stress-relieved 7-wire strand. The nominal diameter shall be 7/8" and the nominal cross-sectional area shall be 0.109 sq. in. Lifting loops shall be 1/2" diameter 6 x 25 class wire rope with fiber core and shall have a minimum ultimate tensile strength of 21,000 lbs.

The 1" rods in the transverse tie assembly shall be tightened to a snug fit and the threads set. Pockets that receive transverse tie bar on outside beam shall be filled with grout after transverse tie assembly is in place.

Longitudinal shear keys shall be packed with a very dry mix of 2:1 sand and P.C. mortar. After beams have been erected, holes for the dowel anchors shall be drilled into the sub-structure and the anchor dowels shall be placed.

Steel for dowel rods shall be A51310, M227 or A51310 M31.

Transverse tie assemblies shall be A51310 M227 Grade 70-80.

After fabrication the transverse tie assemblies (tie rods, nuts, washers and sleeves) shall be hot-dipped galvanized in accordance with A51310 Designation M232.

Cost of reinforcement and accessories cast into the beam, of bearing pads, and of grouting longitudinal shear keys is included in unit price bid for "Precast Prestressed Concrete Deck Beams."

**BILL OF MATERIAL**

Bar	No.	Size	Length	Shape
b	3	#5	13'-3"	
b <sub>1</sub>	3	#5	20'-9"	
Precast Prestressed Concrete Deck Beams (17')			Sq. Ft.	106.7
Class X Concrete			Cu. Yds.	0.7
Reinforcement Bars			Lbs.	11.0

DESIGNED J. T. Penning  
CHECKED J. M. Patel  
DRAWN JAMES R. CARMAN  
CHECKED J. M. P.

EXAMINED J. M. P.  
PASSED H. G. Beermann  
APPROVED Richard H. Jetterman

JUNE 3 1961

**FOR INFORMATIONAL PURPOSES ONLY**

P.P.C. DECK BEAMS  
SET RT. 9 SEC. 378R  
MC DONOUGH COUNTY  
STA. 564+31.00