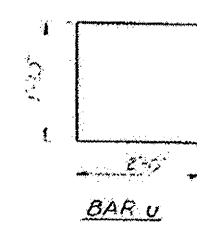
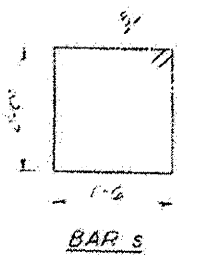
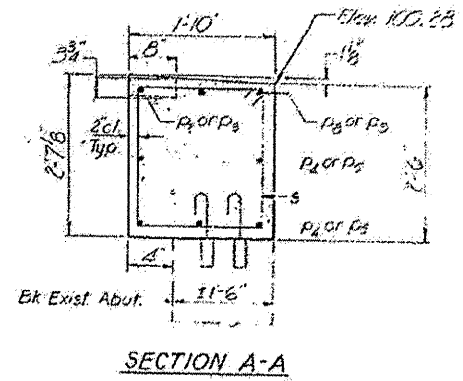
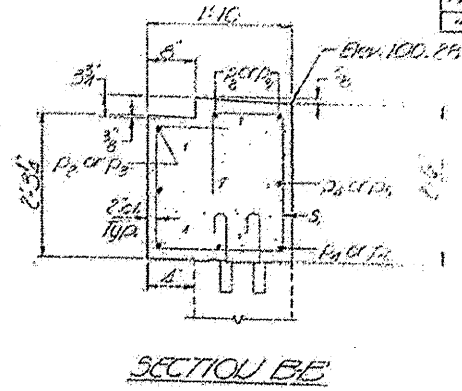
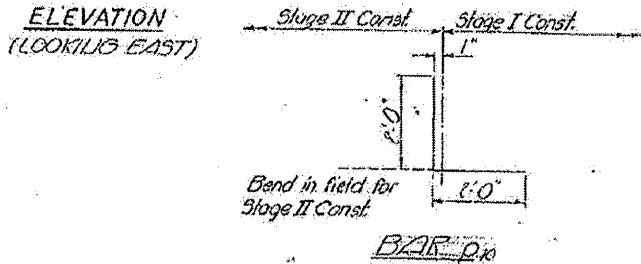
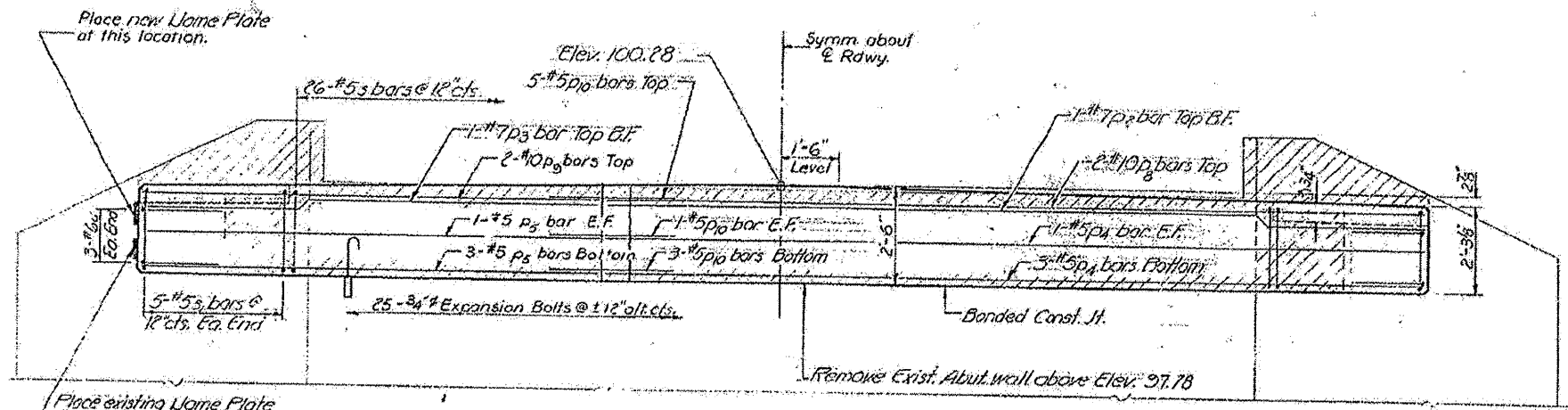
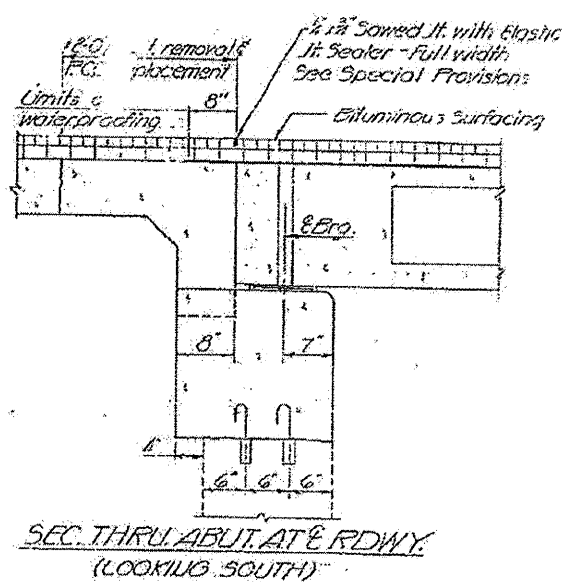
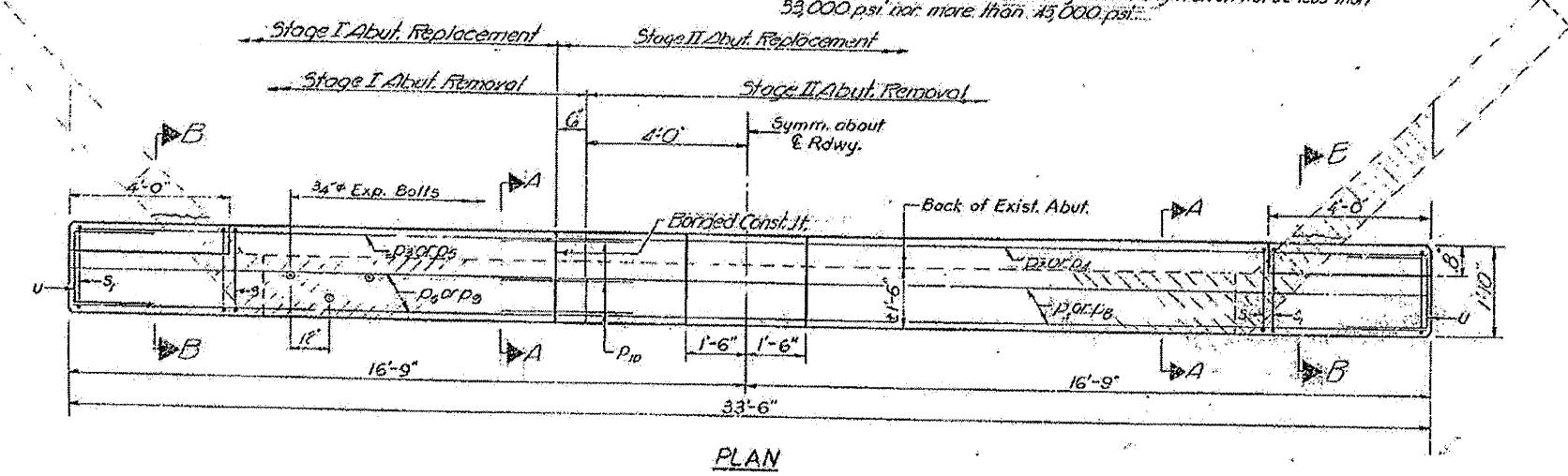


STATE OF ILLINOIS  
DEPARTMENT OF TRANSPORTATION

PROJECT NO.	376R	DATE	11 10	SHEET NO.	54
DESIGNED BY	MoDonough	CHECKED BY		DRAWN BY	



**FOR INFORMATIONAL PURPOSES ONLY**



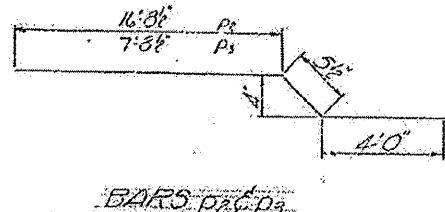
**BILL OF MATERIAL**

Bar	No.	Size	Length	Shape
P1	2	#10	8'	L
P2	2	#10	8'	L
P3	1	#7	31'	L
P4	1	#7	31'	L
P5	2	#5	31'	L
P6	5	#5	31'	L
P7	10	#5	4'-0"	L
P8	10	#5	7'-0"	L
P9	10	#5	6'-2"	L
P10	6	#6	5'-10"	L
Class of Concrete: Concrete 5-2				
Reinforcement Bars: 1 lb				
Expansion Bolts: 3/4" dia				
Concrete Removal: 5 cu yds				

EAST ABUTMENT  
SBL RT. 9 SEC. 376R  
MC DONOUGH COUNTY  
STA. 564+31.00

DESIGNED: J.T. Downing  
CHECKED: J.M. Patel  
DRAWN: J.L. Armstrong  
CHECKED: J.M.P.

EXAMINED: [Signature]  
PASSED: [Signature]  
APPROVED: Richard H. Götterman



NOTE  
Hatched area indicates Concrete Removal. Reinforcement extending into removed area shall be cleaned and incorporated into the new construction.  
Expansion bolts shall be anchored in sound concrete. All edges shall have standard 3/4" chamfers except as noted.