

STATE OF ILLINOIS
DEPARTMENT OF TRANSPORTATION

GENERAL NOTES

Reinforcement bars shall conform to the requirements of ASTM A 706 Gr 60. See Special Provisions.

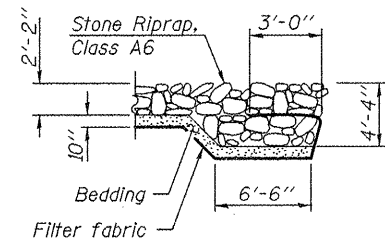
Reinforcement bars designated (E) shall be epoxy coated.

Layout of slope protection system may be varied in the field to suit ground conditions as directed by the Engineer.

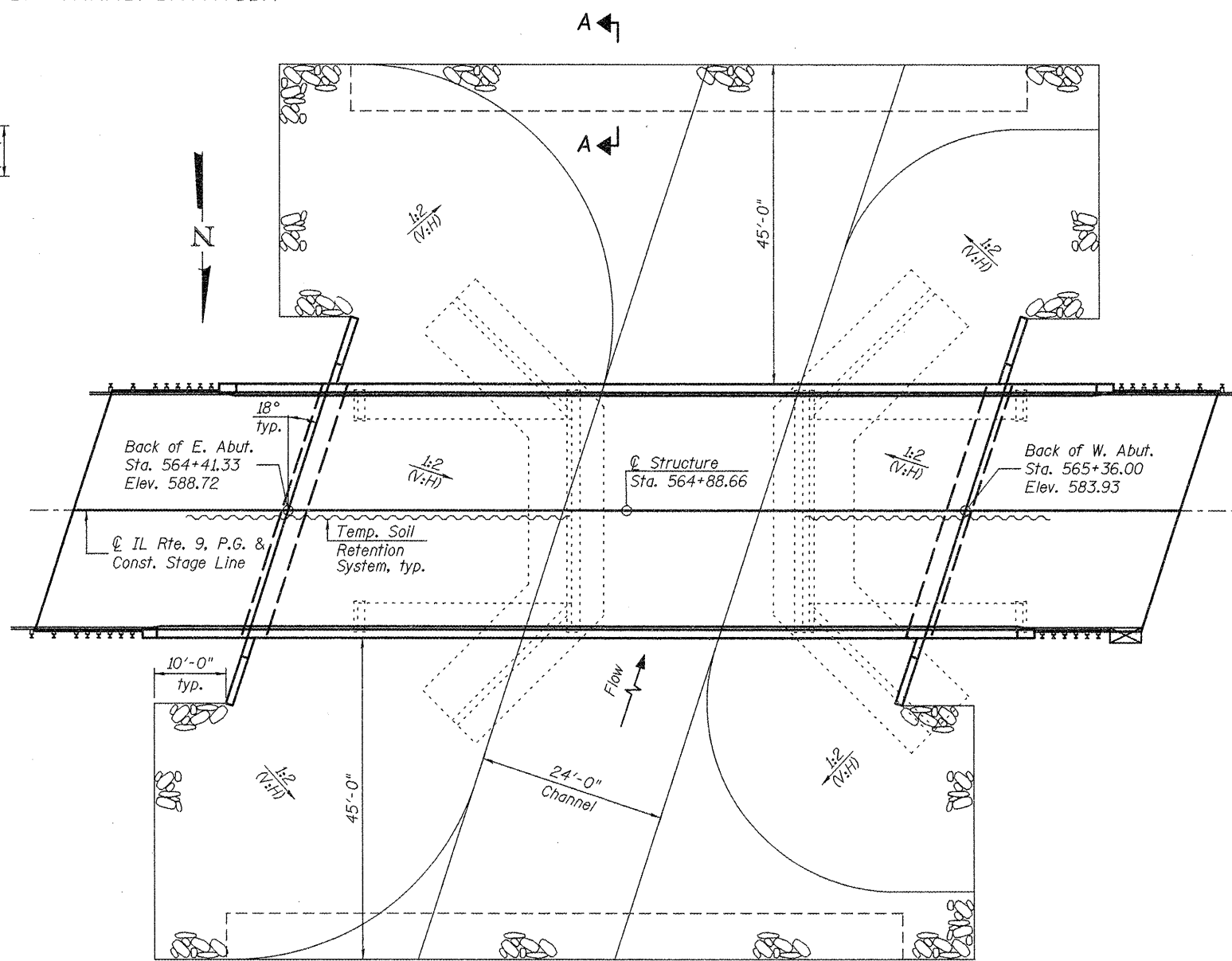
The embankment configuration shown shall be the minimum that must be placed and compacted prior to construction of the abutments.

The Contractor shall drive test piles to 110% of the nominal required bearing specified in production locations at substructures specified or approved by the Engineer before ordering the remainder of piles.

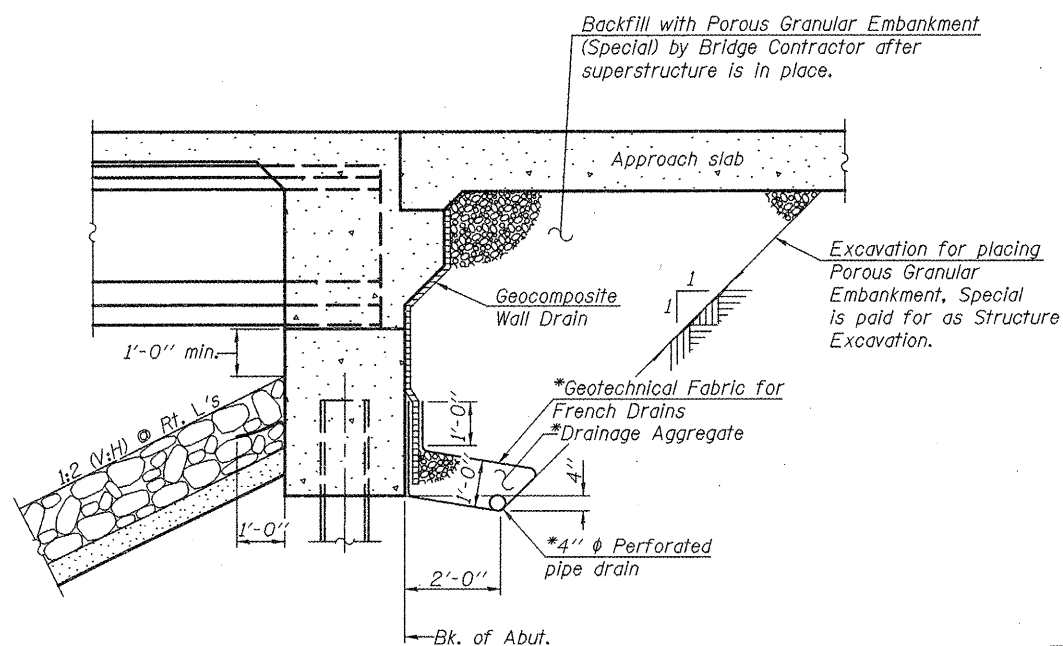
Slip forming of the parapets is not allowed.



SECTION A-A



PLAN OF RIPRAP LAYOUT



SECTION THRU INTEGRAL ABUTMENT
(Horiz. dim. @ Rt. L's)

*Included in the cost of Pipe Underdrains for Structures.

Note:

All drainage system components shall extend to 2'-0" from the end of each wingwall except an outlet pipe shall extend until intersecting with the side slopes. The pipes shall drain into concrete headwalls. (See Article 601.05 of the Standard Specifications and Highway Standard 601101).

DESIGNED	SEC
CHECKED	CDL
DRAWN	SEC
CHECKED	CDL

STATION 564+88.66
BUILT 20__ BY
STATE OF ILLINOIS
F.A.P. RTE. 685 SEC. 37BR-1
LOADING HL-93
STRUCTURE NO. 055-0079

NAME PLATE
See Std. 515001

GENERAL DATA
STRUCTURE NO. 055-0079

SHEET NO. 2 21 SHEETS	EFK Moen, LLC Civil Engineering Design		331 Salem Place Suite 225 Fairview Heights, IL 62208		Phone 618-206-4250 Fax 618-206-4253
	F.A.P. RTE. 685	SECTION 37BR-1	COUNTY MCDONOUGH	TOTAL SHEETS 138	SHEET NO. 57
	CONTRACT NO. 68352			FED. ROAD DIST. NO. ILLINOIS FED. AID PROJECT	