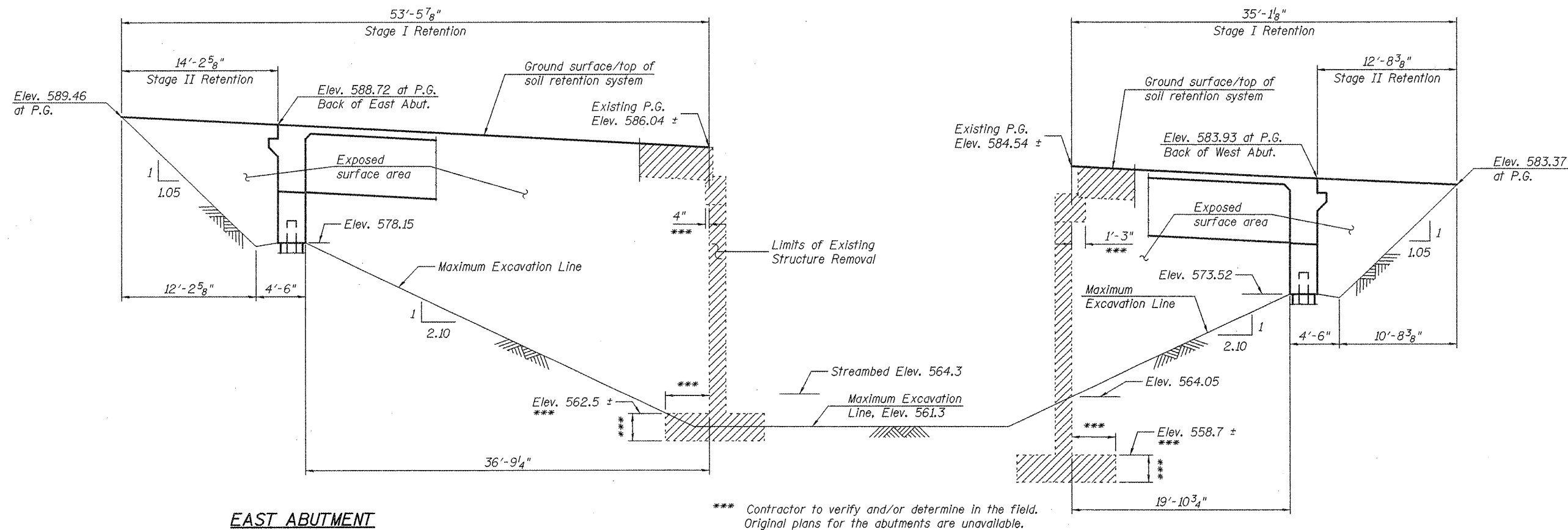
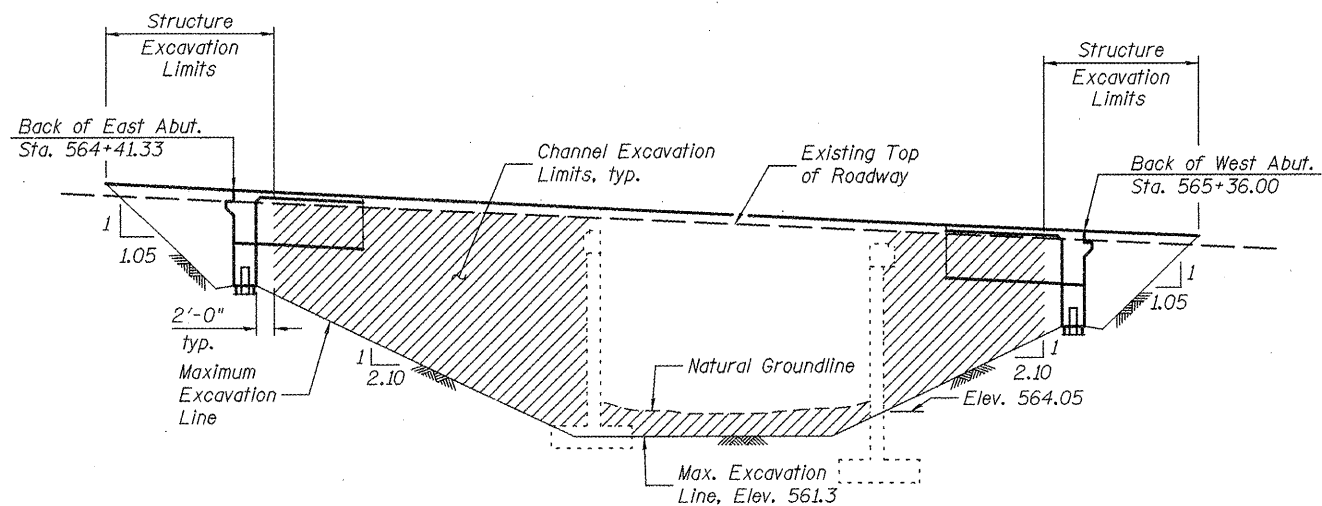


STATE OF ILLINOIS
DEPARTMENT OF TRANSPORTATION



Note:
A cantilevered sheet piling design does not appear feasible and additional members or other retention systems may be necessary. The Contractor shall submit a temporary soil retention system design including plan details and calculations for review and acceptance by the Engineer.

TEMPORARY SOIL RETENTION SYSTEM



EAST ABUTMENT

WEST ABUTMENT

EXCAVATION LIMITS

TEMPORARY SOIL RETENTION SYSTEM & EXCAVATION LIMITS
STRUCTURE NO. 055-0079

DESIGNED	SEC
CHECKED	CDL
DRAWN	SEC
CHECKED	CDL

SHEET NO. 4 21 SHEETS	F.A.P. RTE.	SECTION	COUNTY	TOTAL SHEETS	SHEET NO.
	685	37BR-1	MCDONOUGH	138	59
CONTRACT NO. 68352					
FED. ROAD DIST. NO.		ILLINOIS		FED. AID PROJECT	

EFK Moen, LLC
Civil Engineering Design
331 Salem Place
Suite 225
Fairview Heights, IL 62208
Phone 618-206-4250
Fax 618-206-4253