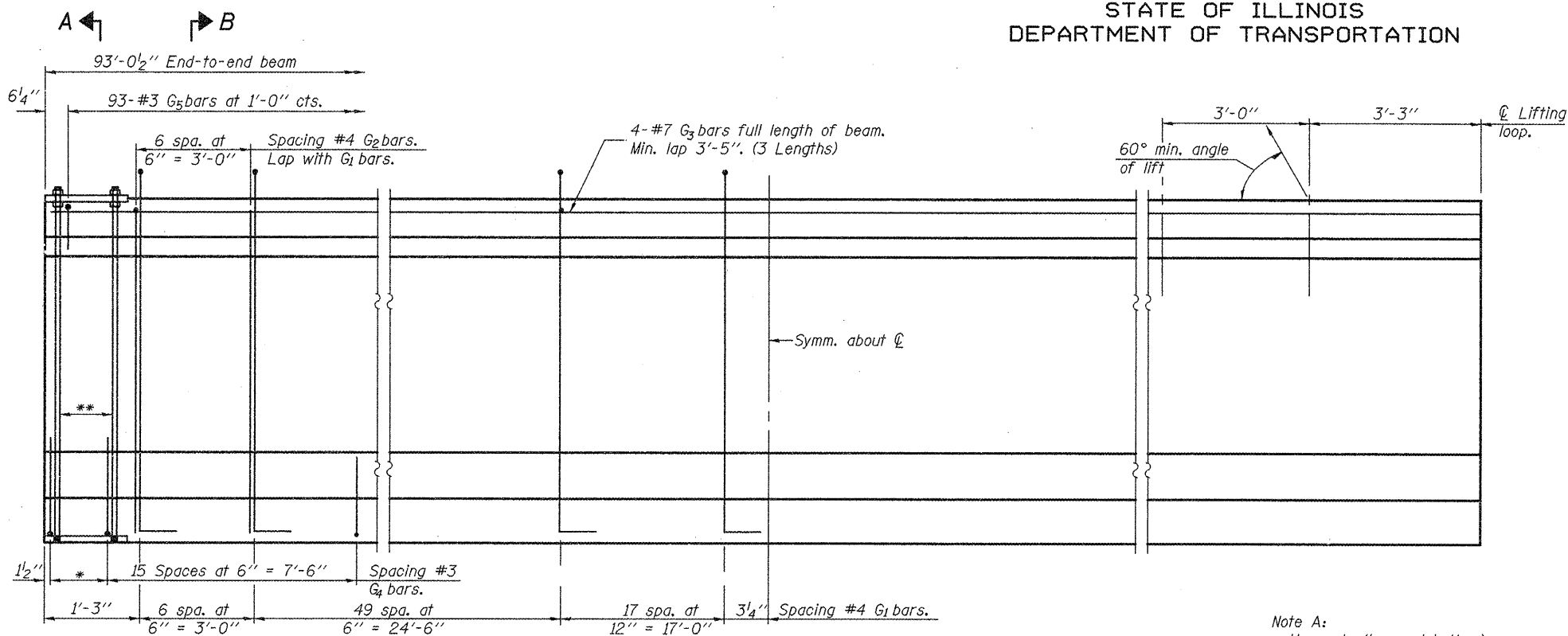
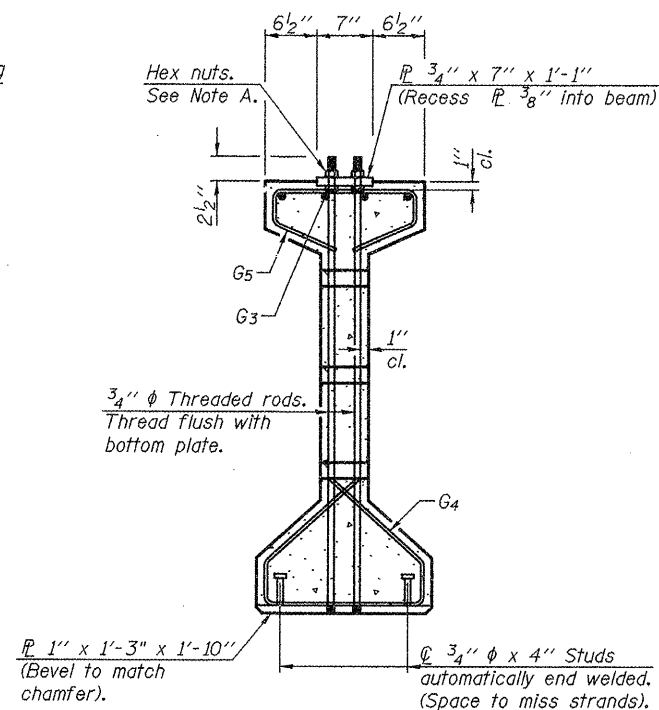


STATE OF ILLINOIS
DEPARTMENT OF TRANSPORTATION

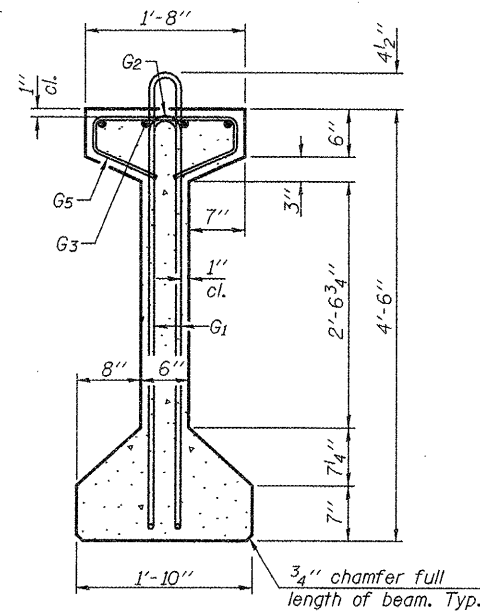


ELEVATION OF BEAM
(Showing reinforcement & dimensions)

Note A:
Hex nuts (top and bottom) with lock washers (top). Only tighten sufficiently to compress lock washers.

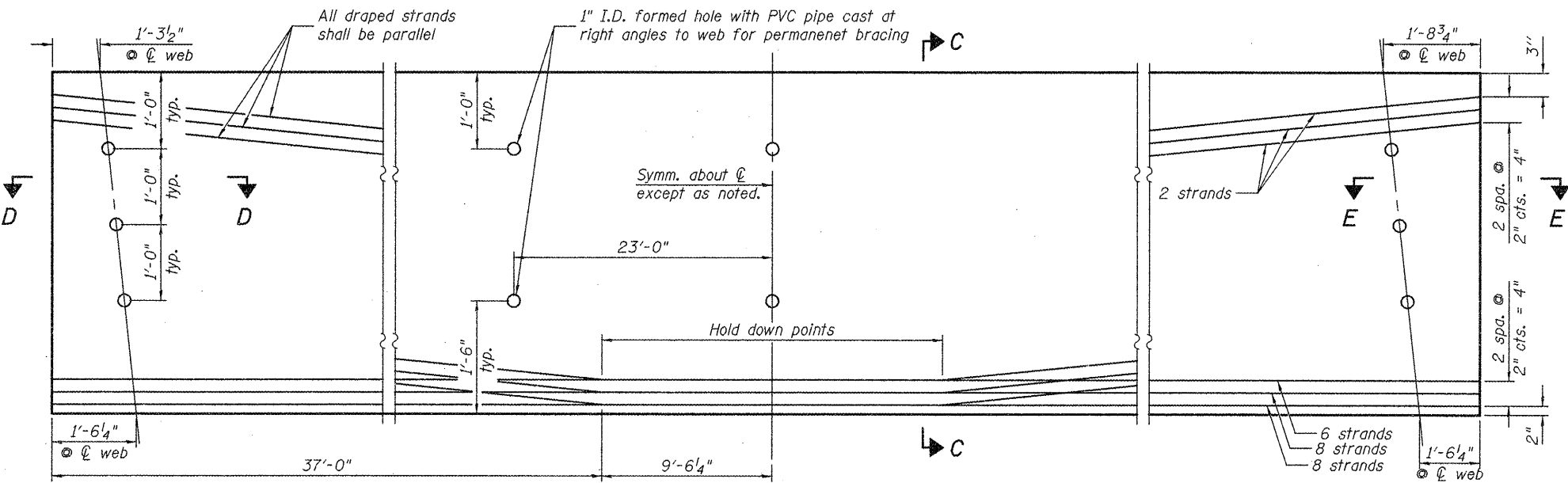


SECTION A-A

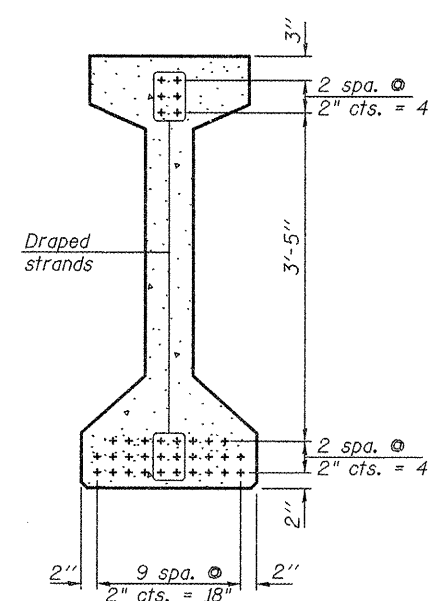


SECTION B-B

* 3 spaces at 3" = 9"
** 4-3/4" φ threaded dowel rods at 3" cts., Each Face.



ELEVATION OF BEAM
(Showing prestressing steel)



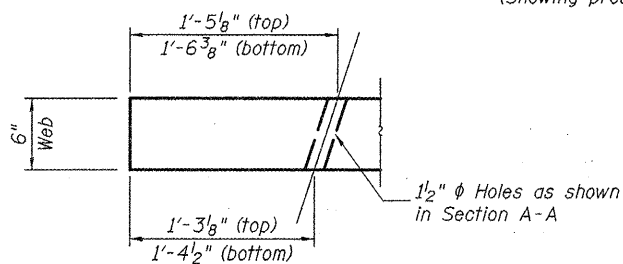
SECTION C-C

*****BAR LIST
ONE BEAM ONLY**

Bar	No.	Size	Length	Shape
G1	146	#4	10'-5"	⊔
G2	14	#4	8'-8"	⊔
G3	12	#7	33'-3"	—
G4	38	#3	4'-11"	⊔
G5	93	#3	3'-5"	⊔

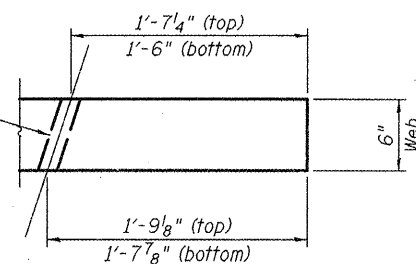
***For information only

Notes:
See sheet 16 of 21 for additional details and Bill of Material.
Required release strength, f'ci, shall be 5,000 psi.



SECTION D-D

1/2" φ Holes as shown in Section A-A



SECTION E-E

DESIGNED PMM
CHECKED CTW
DRAWN SEC
CHECKED CTW

PI-4-54

10-1-08

**54" PPC I-BEAM
STRUCTURE NO. 055-0079**

SHEET NO. 15 21 SHEETS	F.A.P. RTE.	SECTION	COUNTY	TOTAL SHEETS	SHEET NO.
	685	37BR-1	MCDONOUGH	138	70
CONTRACT NO. 68352					
FED. ROAD DIST. NO.		ILLINOIS	FED. AID PROJECT		

EFK Moen, LLC
Civil Engineering Design

331 Salem Place
Suite 225
Fairview Heights, IL 62208

Phone 618-206-4250
Fax 618-206-4253