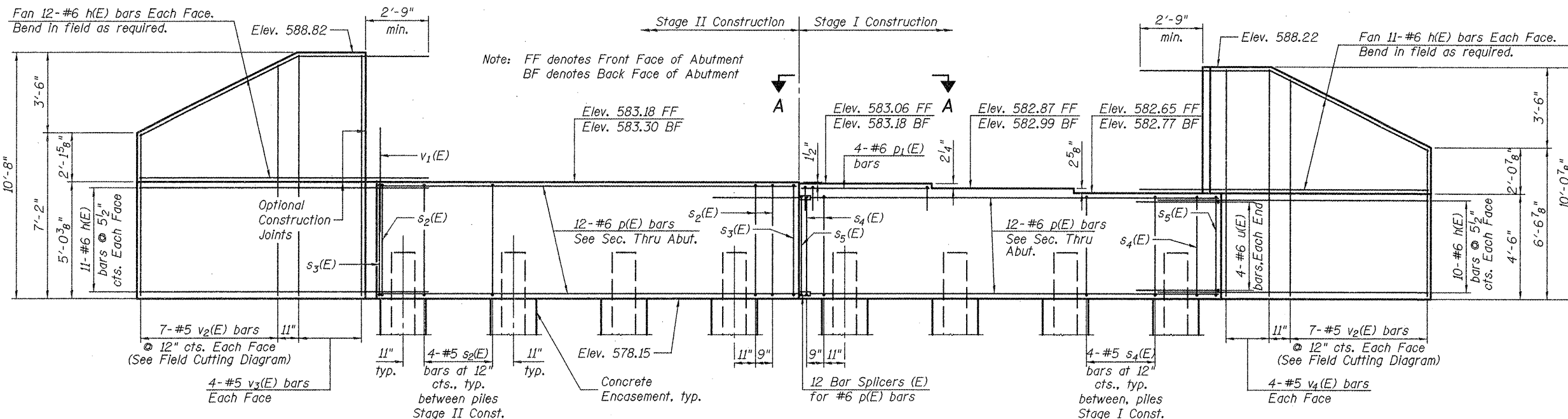
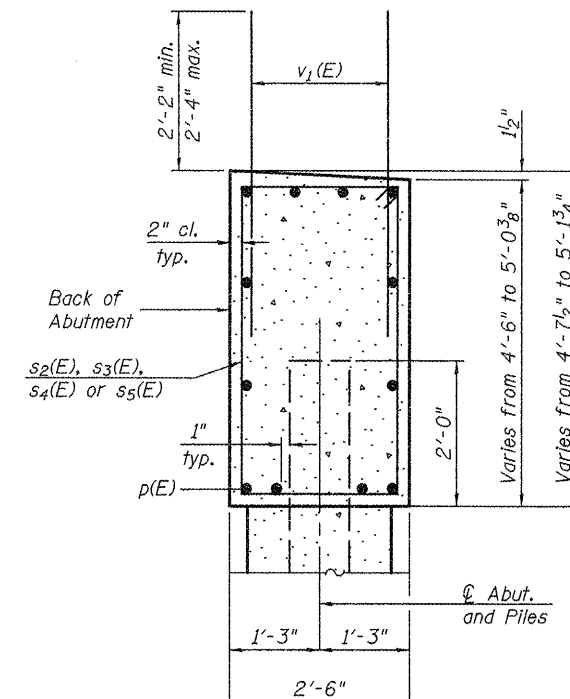


STATE OF ILLINOIS  
DEPARTMENT OF TRANSPORTATION

Notes:  
Pour steps monolithically with cap.



ELEVATION



SEC. THRU ABUT.

BILL OF MATERIAL

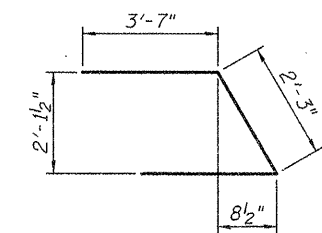
Bar No.	Size	Length	Shape
h(E)	#6	13'-6"	
p(E)	#6	18'-2"	
p1(E)	#6	5'-5"	
s2(E)	#5	14'-7"	□
s3(E)	#5	14'-9"	□
s4(E)	#5	13'-7"	□
s5(E)	#5	13'-9"	□
s6(E)	#5	4'-9"	□
s7(E)	#5	4'-8"	□
u(E)	#6	9'-5"	∩
v1(E)	#5	4'-6"	
v2(E)	#5	16'-3"	
v3(E)	#5	10'-4"	
v4(E)	#5	9'-8"	
Structure Excavation	Cu. Yd.	123.0	
Concrete Structures	Cu. Yd.	23.7	
Reinforcement Bars, Epoxy Coated	Pound	3,850	
Furnishing Steel Piles, HP12x53	Foot	476	
Driving Piles	Foot	476	
Test Pile Steel HP12x53	Each	1	
Concrete Encasement	Cu. Yd.	2.8	

For details of Bar Splicers, see sheet 20 of 21.  
For details of piles and Concrete Encasement, see sheet 19 of 21.

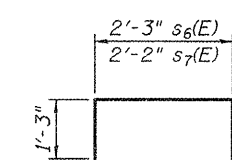
EAST ABUTMENT

STRUCTURE NO. 055-0079

BAR u(E)

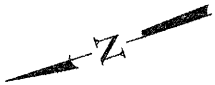


BAR s6(E) & s7(E)



SHEET NO. 17 21 SHEETS	F.A.P. RTE.	SECTION	COUNTY	TOTAL SHEETS	SHEET NO.
	685	37BR-1	MCDONOUGH	138	72
CONTRACT NO. 68352					
FED. ROAD DIST. NO.		ILLINOIS	FED. AID PROJECT		

EFK Moen, LLC  
Civil Engineering Design  
331 Salem Place  
Suite 225  
Fairview Heights, IL 62208  
Phone 618-206-4250  
Fax 618-206-4253

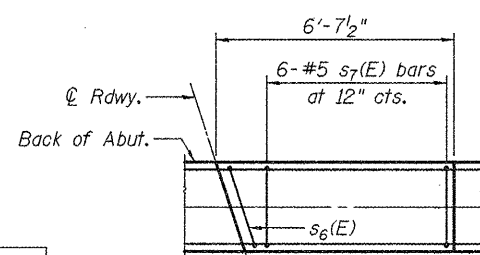


PILE DATA  
Type: HP12x53  
Nominal Required Bearing: 419 kip  
Factored Resistance Available: 210 kip  
Est. Length: 68 ft  
No. Production Piles: 7  
No. Test Piles: 1

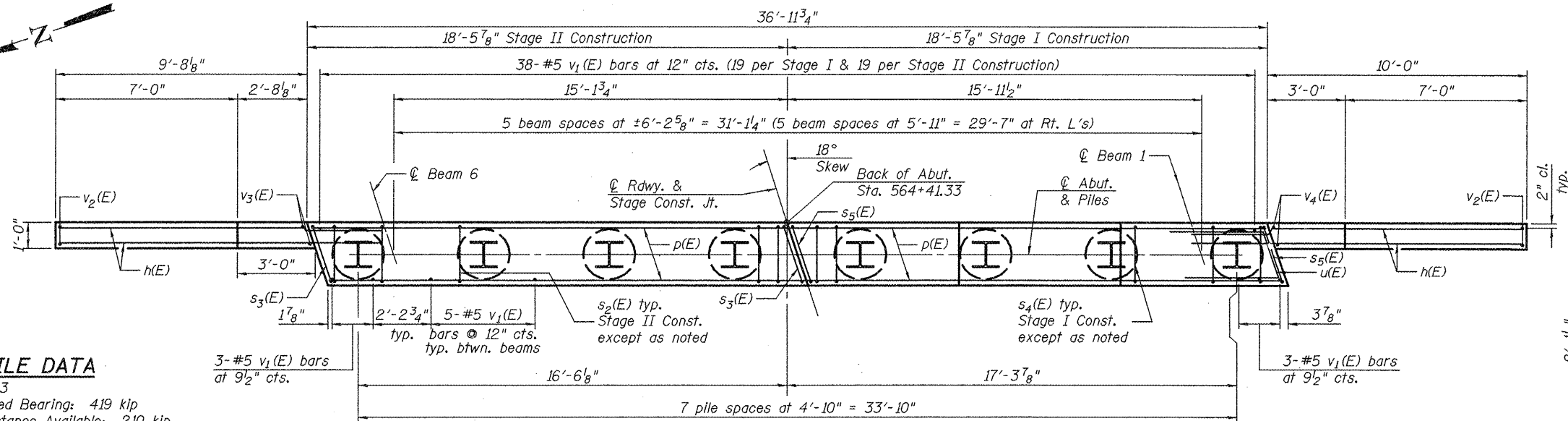
DESIGNED SEC
CHECKED CDL
DRAWN SEC
CHECKED CDL

AI-L 10-1-08

VIEW A-A

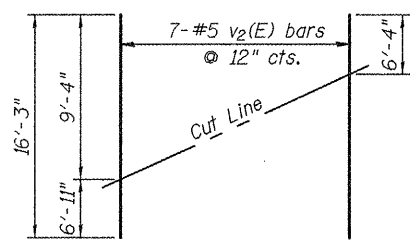


PLAN



FIELD CUTTING DIAGRAM

Order v2(E) full length. Cut as shown and use remainder of bars in opposite face.



BARS s2(E), s3(E), s4(E) & s5(E)

