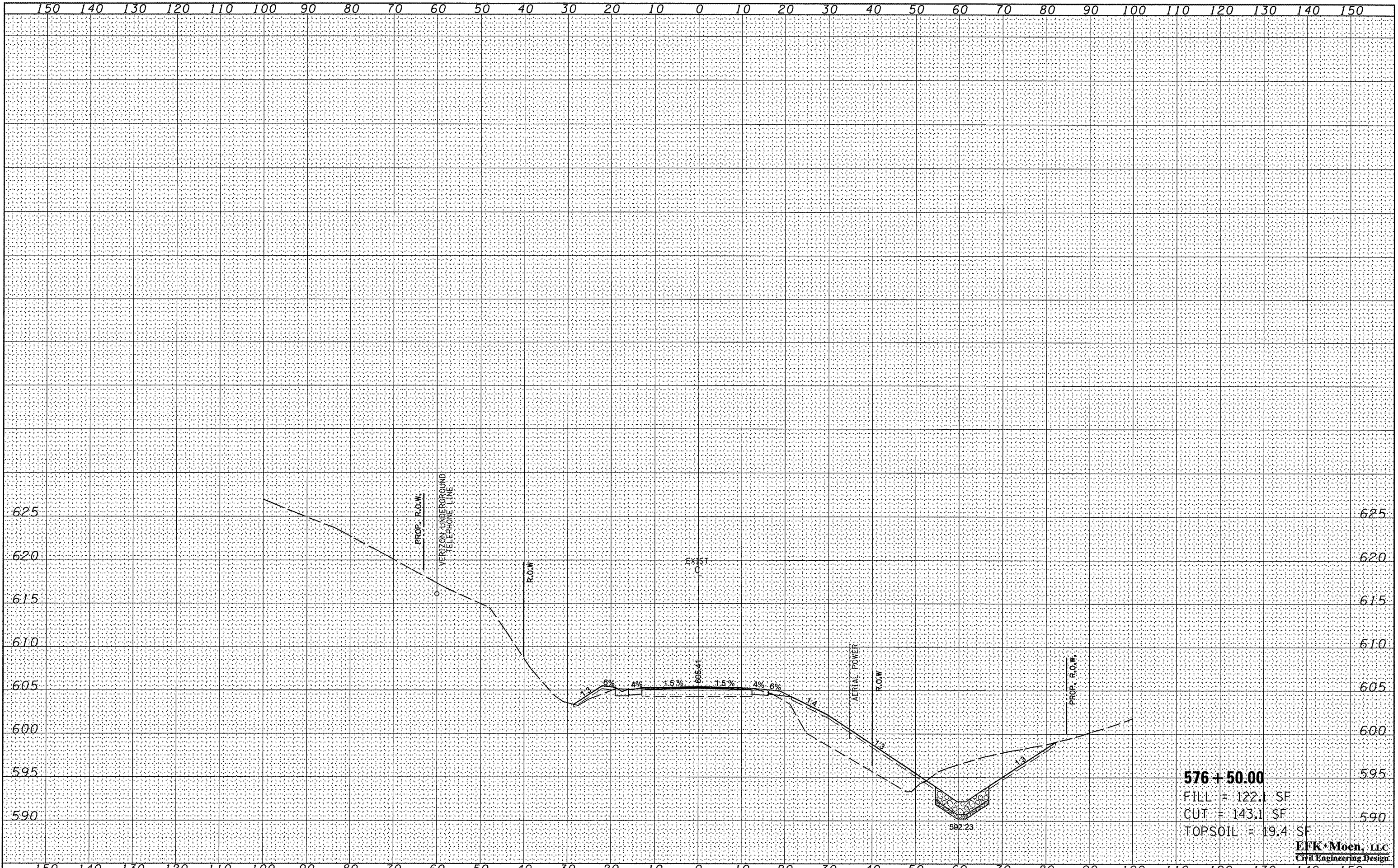


DATE	
BY	
FINAL SURVEY	
SURVEYED	
PLOTTED	
TEMPLATE	
AREAS	
CHECKED	
NO.	

DATE	
BY	
ORIGINAL SURVEY	
SURVEYED	
PLOTTED	
TEMPLATE	
AREAS	
CHECKED	
NO.	



**576 + 50.00**  
 FILL = 122.1 SF  
 CUT = 143.1 SF  
 TOPSOIL = 19.4 SF

**EFK Moen, LLC**  
 Civil Engineering Design

FILE NAME = 2:\08055\_Shaw\_Craek\dgn\Design\Final\Plotsheet

USER NAME = jd  
 199-138-0468352-sht-xssht.dgn  
 PLOT SCALE = 20.0000" / 1"  
 PLOT DATE = 10/16/2009

DESIGNED -  
 DRAWN - JD  
 CHECKED - SD  
 DATE - 10/15/09

REVISED -  
 REVISED -  
 REVISED -  
 REVISED -

**STATE OF ILLINOIS  
 DEPARTMENT OF TRANSPORTATION**

**CROSS SECTIONS**  
 SCALE: 5'V : 10'H SHEET NO. 25 OF 40 SHEETS STA. 576+50.00 TO STA. 576+50.00

F.A.P. RTE.	SECTION	COUNTY	TOTAL SHEETS	SHEET NO.
685	37BR-1	MCDONOUGH/PULASKI	138	123
FED. ROAD DIST. NO.			ILLINOIS FED. AID PROJECT	
			CONTRACT NO. 68352	