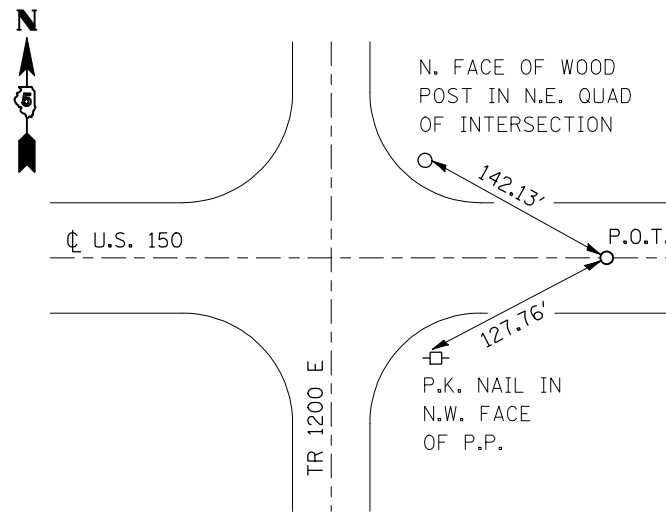
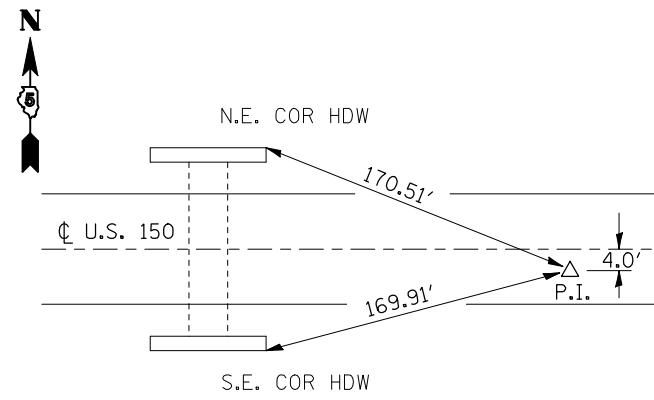


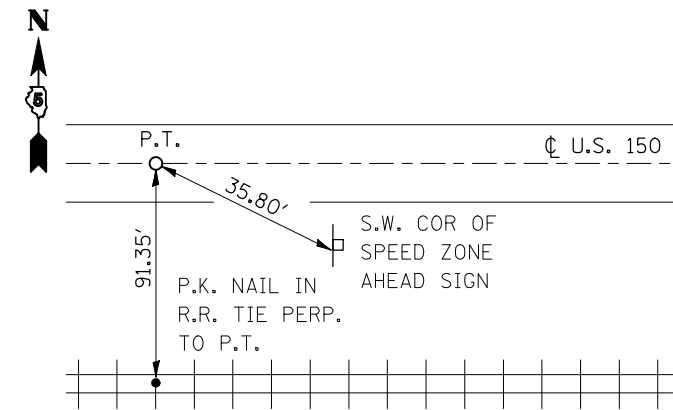
**EXISTING P.O.T. STATION 266 + 33.87**



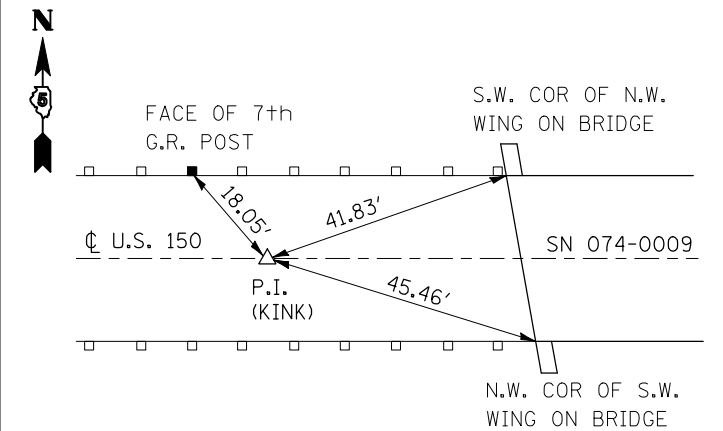
**EXISTING P.I. STATION 276 + 75.36**



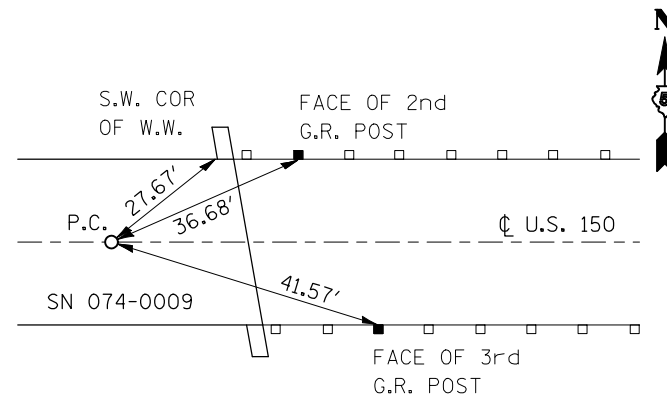
**EXISTING P.T. STATION 279 + 90.12**



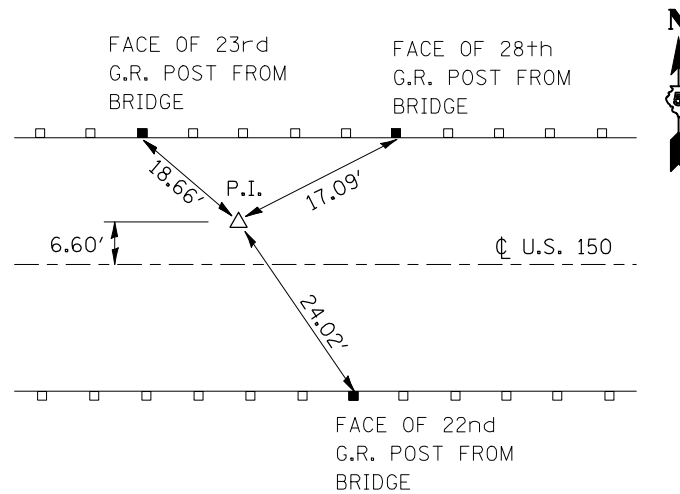
**EXISTING P.I. KINK STATION 287 + 70.85**



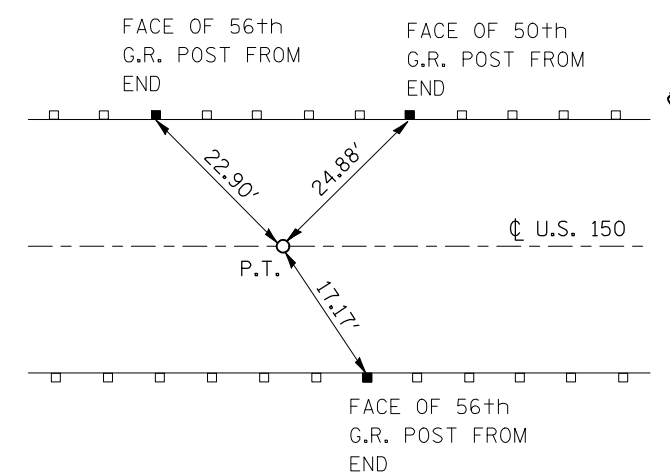
**EXISTING P.C. STATION 290 + 04.11**



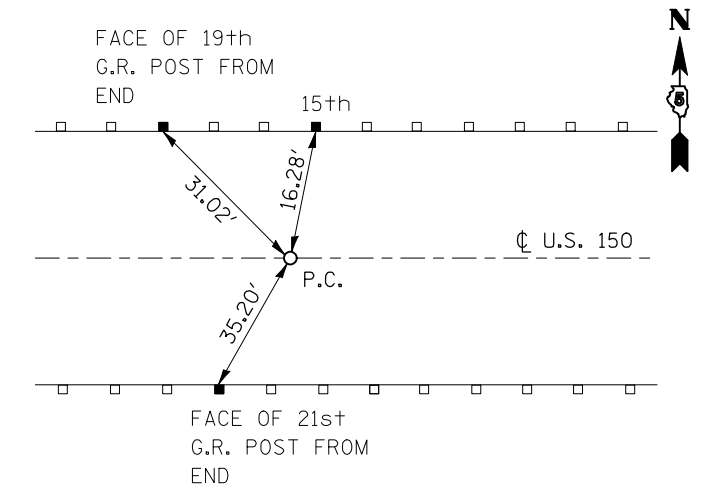
**EXISTING P.I. STATION 291 + 82.62**



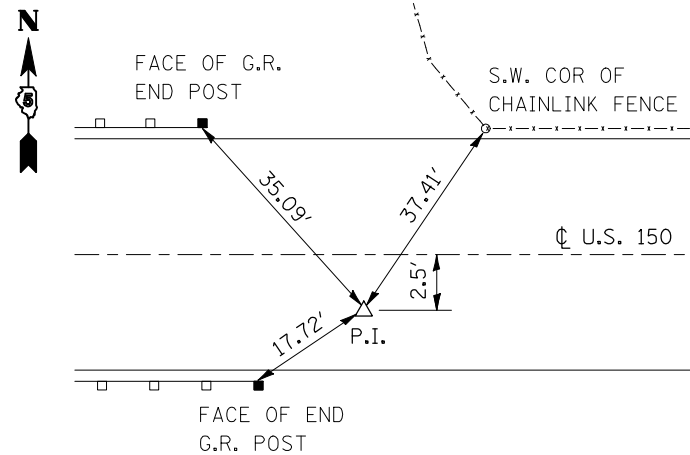
**EXISTING P.T. STATION 293 + 61.14**



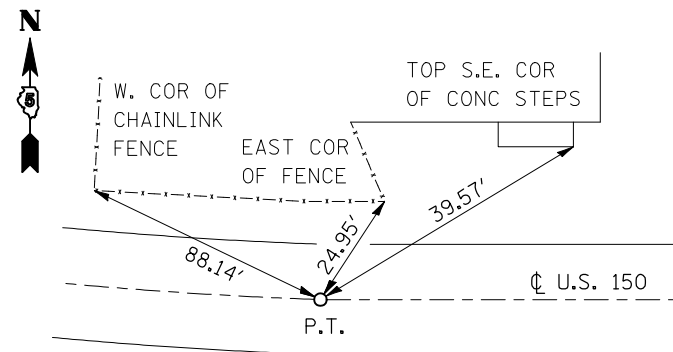
**EXISTING P.C. STATION 296 + 02.89**



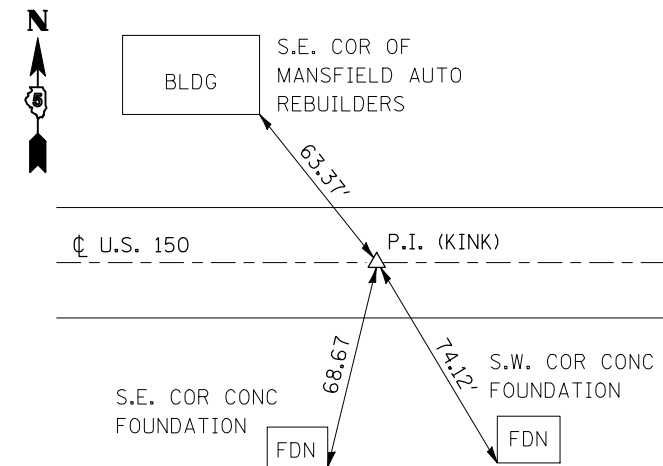
**EXISTING P.I. STATION 297 + 18.38**



**EXISTING P.T. STATION 298 + 33.86**



**EXISTING P.I. KINK STATION 303 + 43.16**



- BM 4696-1 - CHISELED SQUARE ON EDGE OF 2' ROUND SIGNAL FDN FOR ABANDONED RAILROAD STATION 286+79.00, 142.00' RT. ELEVATION = 730.975
- BM 4696-2 - CHISELED SQUARE ON FLAT TOP (SW) CORNER OF SOUTHWEST WINGWALL OF BRIDGE STATION 288+13.00, 17.65' RT. ELEVATION = 755.435
- BM 4696-3 - CHISELED SQUARE ON FLAT TOP (NE COR) OF NORTHEAST WINGWALL OF BRIDGE STATION 290+27.00, 17.80' LT. ELEVATION = 755.560
- BM 4696-4 - CHISELED SQUARE ON TOP HEADWALL FOR AN A.R. PIPE CULVERT STATION 296+76.00, 21.35' RT. ELEVATION = 727.365

FILE NAME =	USER NAME = shererjm	DESIGNED -	REVISED -
ct:\pwork\pwidot\shererjm\dms86674\0570388-sh1-ATB.dgn		DRAWN -	REVISED -
	PLOT SCALE = 40.0000' / IN.	CHECKED -	REVISED -
	PLOT DATE = 10/13/2009	DATE -	REVISED -

STATE OF ILLINOIS  
 DEPARTMENT OF TRANSPORTATION

**ALIGNMENT CROSS TIES & BENCHMARKS**

SCALE: NONE SHEET NO. 1 OF 1 SHEETS STA. TO STA.

F.A.S. RTE.	SECTION	COUNTY	TOTAL SHEETS	SHEET NO.
1517	12VBR-1	PIATT	168	14
CONTRACT NO. 70388				
FED. ROAD DIST. NO. ILLINOIS FED. AID PROJECT				