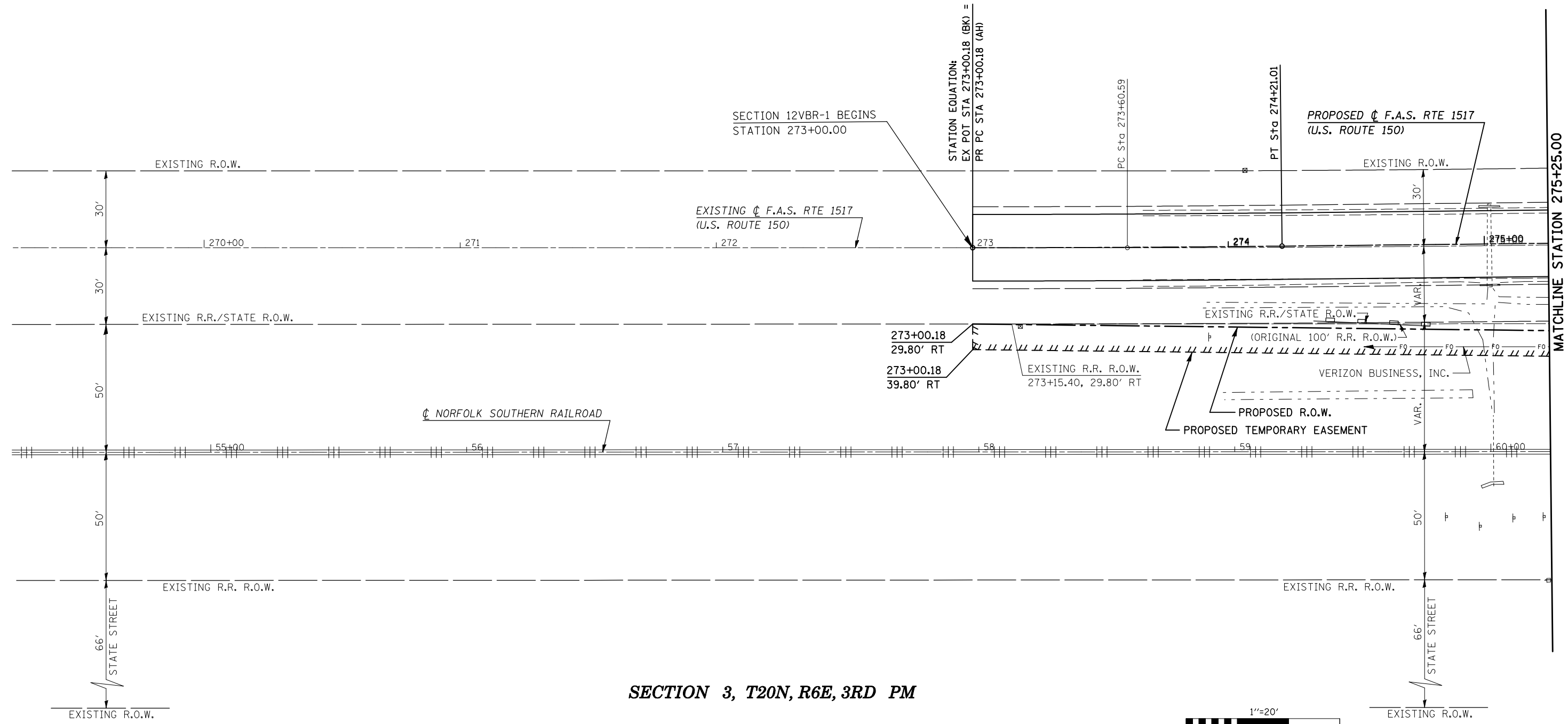


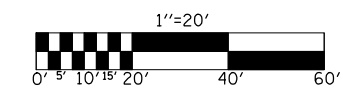
SEE SCHEDULES OF REMOVAL SHEET(S) 51-52
 SEE SCHEDULES OF EROSION CONTROL SHEET(S) 59
 SEE SCHEDULES OF DRAINAGE SHEET(S) 68
 SEE GUARDRAIL DETAILS SHEET(S) 72

SECTION 3, T20N, R6E, 3RD PM

PROP. CURVE U.S. 150
 PI STA. = 273+60.59
 Δ = 0° 36' 13" (LT)
 D = 0° 29' 58"
 R = 11,470.00'
 T = 60.41'
 L = 120.83'
 E = 0.16'
 e = -----
 T.R. = -----
 S.E. RUN = -----
 P.C. STA = 273+00.18
 P.T. STA = 274+21.01



SECTION 3, T20N, R6E, 3RD PM



| | | | |
|--|-----------------------------|-------------------|-----------|
| FILE NAME = | USER NAME = shererjm | DESIGNED - CMS | REVISED - |
| ct:\pw\work\PWIDOT\SHERERJM\dms86674\70388plansheets.dgn | | DRAWN - JRP | REVISED - |
| | PLOT SCALE = 40.0000' / IN. | CHECKED - | REVISED - |
| | PLOT DATE = 10/13/2009 | DATE - 03-25-2008 | REVISED - |

**STATE OF ILLINOIS
 DEPARTMENT OF TRANSPORTATION**

PLAN (U.S. ROUTE 150)

SCALE: 1" = 20' SHEET NO. 1 OF 12 SHEETS STA. 269+25.00 TO STA. 275+25.00

| | | | | |
|--|---------|--------|--------------|-----------|
| F.A.S. RTE. | SECTION | COUNTY | TOTAL SHEETS | SHEET NO. |
| 1517 | 12VBR-1 | PIATT | 168 | 18 |
| CONTRACT NO. 70388 | | | | |
| FED. ROAD DIST. NO. ILLINOIS FED. AID PROJECT | | | | |