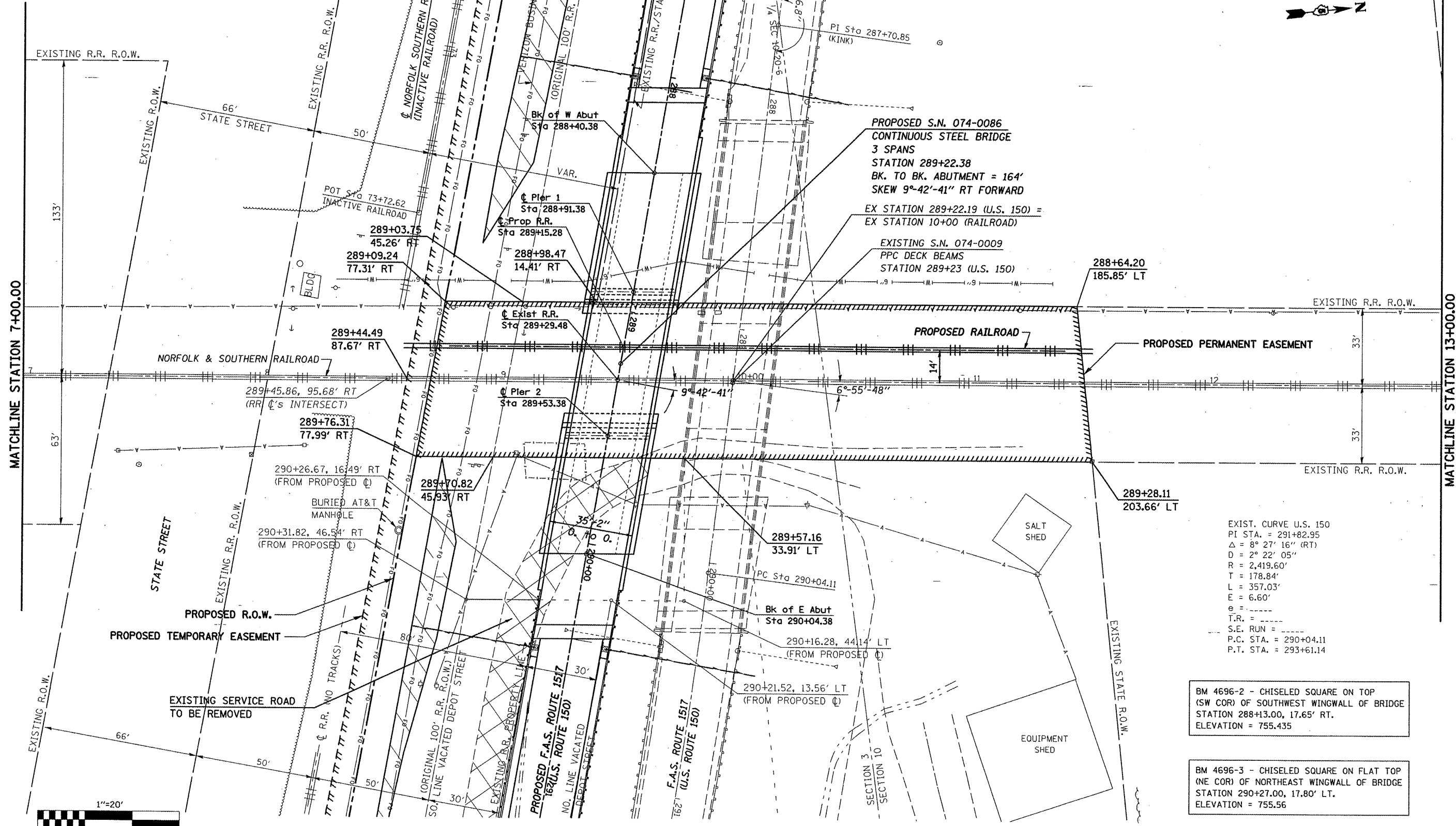


SECTION 10, T20N, R6E, 3RD PM

SECTION 3, T20N, R6E, 3RD PM



PROPOSED S.N. 074-0086
CONTINUOUS STEEL BRIDGE
3 SPANS
STATION 289+22.38
BK. TO BK. ABUTMENT = 164'
SKEW 9°-42'-41" RT FORWARD
EX STATION 289+22.19 (U.S. 150) =
EX STATION 10+00 (RAILROAD)

EXISTING S.N. 074-0009
PPC DECK BEAMS
STATION 289+23 (U.S. 150)

EXIST. CURVE U.S. 150
PI STA. = 291+82.95
Δ = 8° 27' 16" (RT)
D = 2° 22' 05"
R = 2,419.60'
T = 178.84'
L = 357.03'
E = 6.60'
e = -----
T.R. = -----
S.E. RUN = -----
P.C. STA. = 290+04.11
P.T. STA. = 293+61.14

BM 4696-2 - CHISELED SQUARE ON TOP
(SW COR) OF SOUTHWEST WINGWALL OF BRIDGE
STATION 288+13.00, 17.65' RT.
ELEVATION = 755.435

BM 4696-3 - CHISELED SQUARE ON FLAT TOP
(NE COR) OF NORTHEAST WINGWALL OF BRIDGE
STATION 290+27.00, 17.80' LT.
ELEVATION = 755.56

FILE NAME =	USER NAME = sherer_jm	DESIGNED - CMS	REVISED -
c:\pwwork\p\WIDOT\SHERERJM\dms86674\7888plonaheeta.dgn		DRAWN - JRP	REVISED -
		CHECKED -	REVISED -
		DATE - 04-07-2008	REVISED -

STATE OF ILLINOIS
DEPARTMENT OF TRANSPORTATION

PLAN (NORFOLK & SOUTHERN RAILROAD)
SCALE: 1" = 20'
SHEET NO. 2 OF 3 SHEETS
STA. 7+00.00 TO STA. 13+00.00

F.A.S. RTE.	SECTION	COUNTY	TOTAL SHEETS	SHEET NO.
1517	12VBR-1	PIATT	168	36
FED. ROAD DIST. NO. ILLINOIS FED. AID PROJECT			CONTRACT NO. 70388	