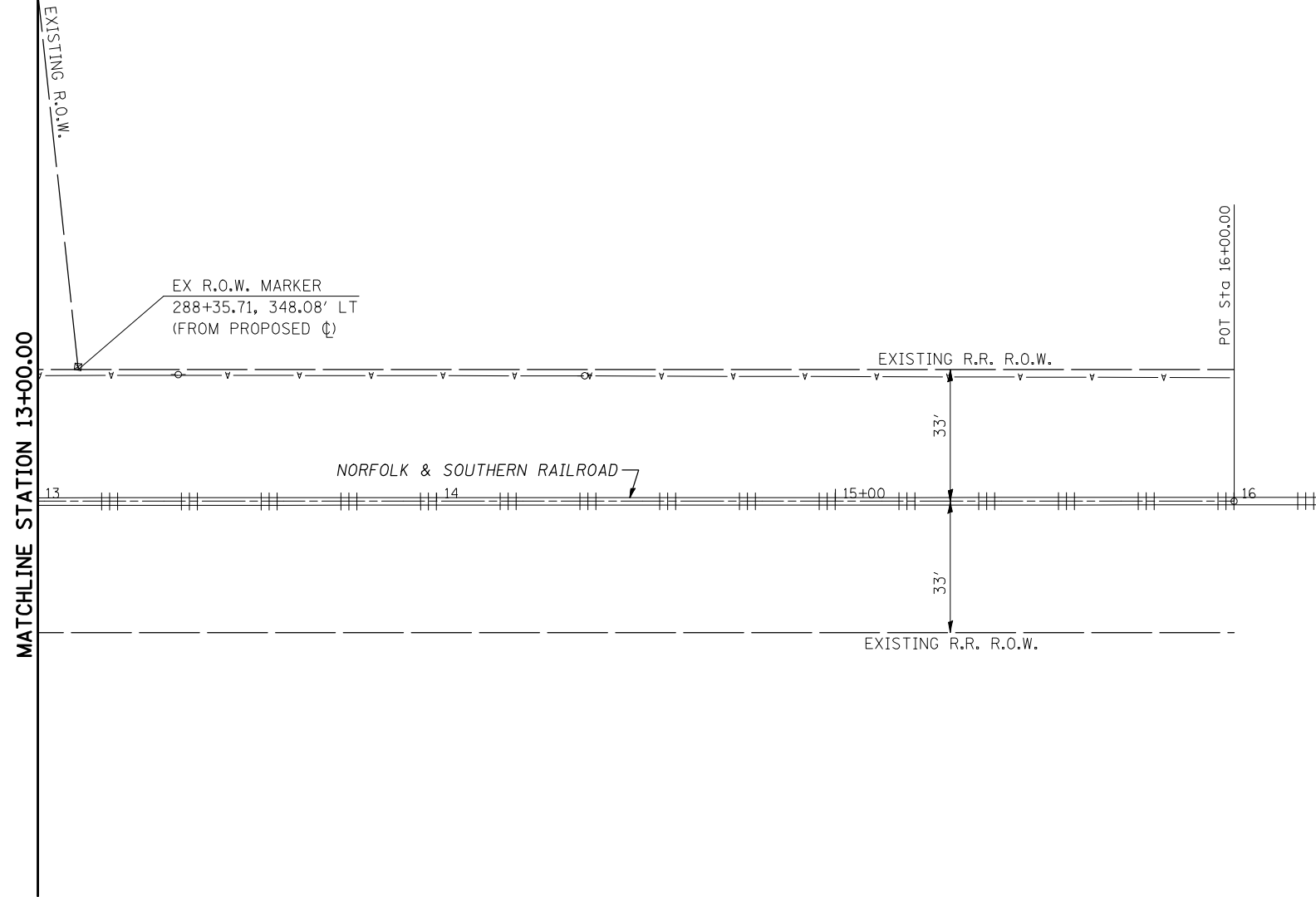
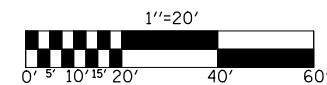


SECTION 3, T20N, R6E, 3RD PM



SECTION 3, T20N, R6E, 3RD PM

NW 1/4 SECTION LINE
NE 1/4 SECTION LINE



FILE NAME =	USER NAME = shererjm	DESIGNED - CMS	REVISED -
ct:\pw\work\PWIDOT\SHERERJM\dms86674\70388plansheets.dgn		DRAWN - JRP	REVISED -
	PLOT SCALE = 40.0000' / IN.	CHECKED -	REVISED -
	PLOT DATE = 10/13/2009	DATE - 04-07-2008	REVISED -

STATE OF ILLINOIS
DEPARTMENT OF TRANSPORTATION

PLAN (NORFOLK & SOUTHERN RAILROAD)

SCALE: 1" = 20' SHEET NO. 3 OF 3 SHEETS STA. 13+00.00 TO STA. 16+00.00

F.A.S. RTE.	SECTION	COUNTY	TOTAL SHEETS	SHEET NO.
1517	12VBR-1	PIATT	168	36
FED. ROAD DIST. NO. ILLINOIS FED. AID PROJECT			CONTRACT NO. 70388	