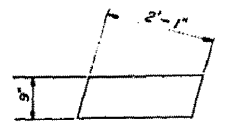


STATE OF ILLINOIS

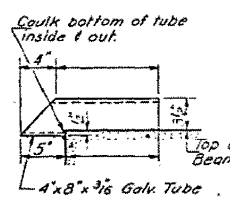
DATE	REVISED	BY	REASON

SHEET NO. 2

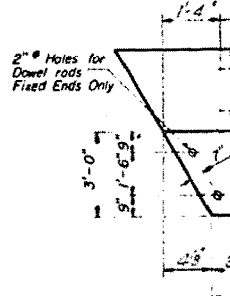
**FABRIC BEARING PAD**



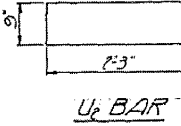
**GRAPHITED ASBESTOS BEARING PAD**



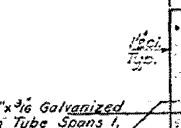
**DRAIN DETAIL**  
(Cost incidental)



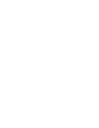
**U<sub>1</sub> BAR**



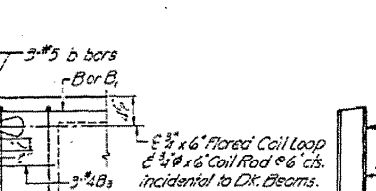
**U<sub>2</sub> BAR**



**D BAR**

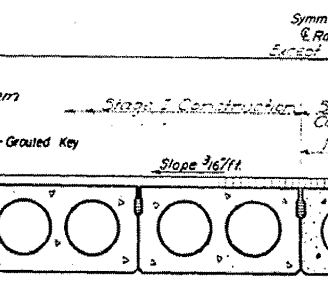


**TYPICAL TRANSVERSE TIE ASSEMBLY**

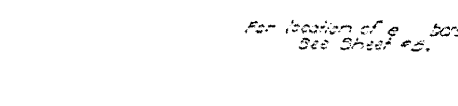


**TYPICAL SECTION**

1/4" Strands Each Strand Stressed to 18,900 lbs.  
8 Strands 1 1/2" up 5 Strands 3/4" up 3 Strands 9" up



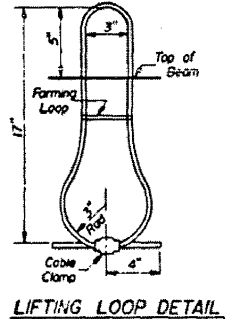
**HALF CROSS SECTION**



**PLAN**



**FIXED END PLAN**



**A, B DIMENSIONS**

	A	B
Span 1	22'-11 1/2"	12'-3 1/4"
Span 2	23'-2 3/8"	12'-6 3/8"
Span 4	25'-1"	12'-2 3/4"
Span 5	23'-2"	12'-5 3/4"

**GENERAL NOTES**

Prestressing steel shall be non-galvanized high strength, stress-relieved 7-wire strand. The nominal diameter shall be 1/4" and the nominal cross-sectional area shall be 0.109 sq in. Lifting loops shall be 1/2" diameter, 6x19 class wire rope with fiber core and shall have a minimum ultimate tensile strength of 22,000 lbs. The 1/4" rods in the transverse tie assembly shall be lightened to a snug fit and the threads set. Pockets that receive transverse tie bar on outside beam shall be filled with grout after transverse tie assembly is in place. Longitudinal shear keys shall be packed with a very dry mix of 2:1 sand and P.C. mortar. After beams have been erected, holes for the dowel anchors shall be drilled into the sub-structure and the anchor dowels shall be grouted in place. Dowel rods shall be ASTM A-306 or ASTM A-615. Transverse tie rods shall be ASTM A-306, Grade 70-80. After fabrication the transverse tie assemblies (tie rods, nuts, washers and sleeves) shall be hot-dipped galvanized in accordance with ASTM Designation A153. Cast of reinforcement and accessories cast into the beam, of bearing pads, of armor angles, and of grouting longitudinal shear keys is included in unit price bid for "Precast Prestressed Concrete Deck Beams".

**BILL OF MATERIAL**

Item	Qty	Unit	Ext. Amt.	Remarks
Bar	12	25	300.00	
Precast Prestressed Concrete Deck Beams	Sq. Ft.	563.4		
Grout & Reinforcement	Cu. Yds.	3.0		
Expansion Guard	Sq. Ft.	2.0		

Concrete poured in 18" lifts. Expansion guard after beams are erected.

**SUPERSTRADE**  
SPANS 12, 13, 4, 5  
D.A. & S. CO. INC.  
SHEPPARD AVENUE  
CHICAGO, ILL.

DESIGNED	July 15 1971	EXAMINED	July 21 1971
CHECKED		PASSED	
DRAWN		APPROVED	
CHECKED		DIRECTOR OF HIGHWAYS	

SR-3 (5-15-71)