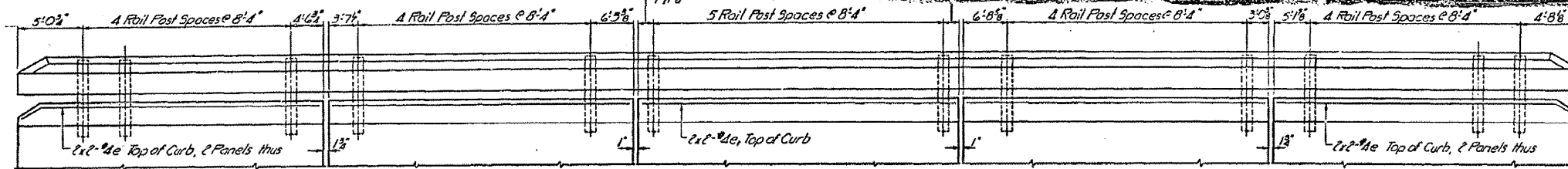
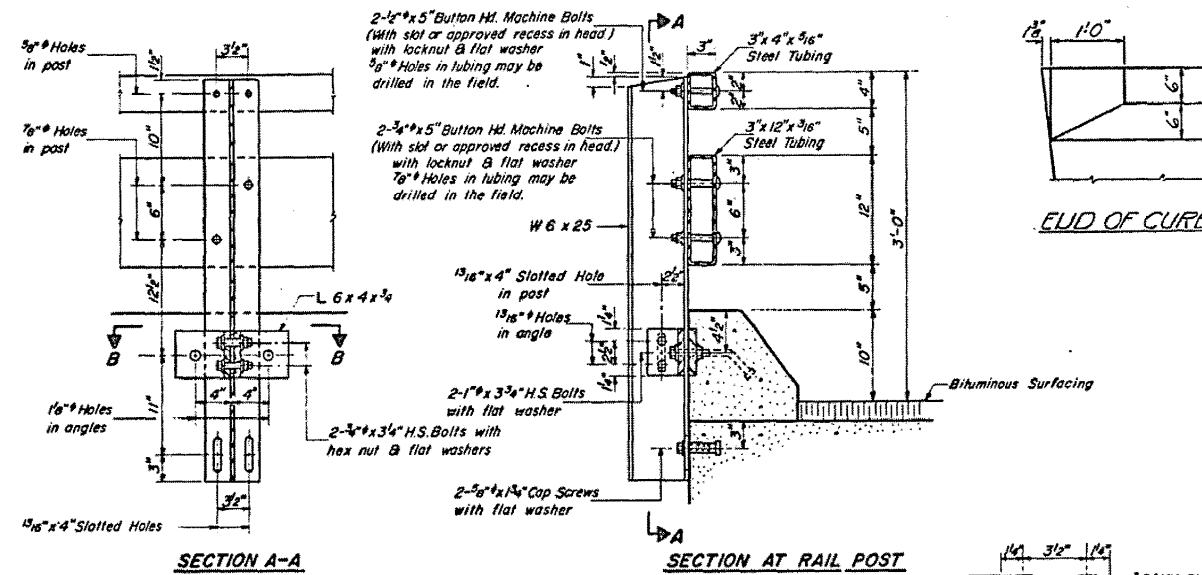


STATE OF ILLINOIS  
DEPARTMENT OF TRANSPORTATION

DESIGNED	SECTION	COUNTY	TOTAL SHEETS	SHEET NO.
JMS	12VBR	PIATT	12	10
				7 SHEETS

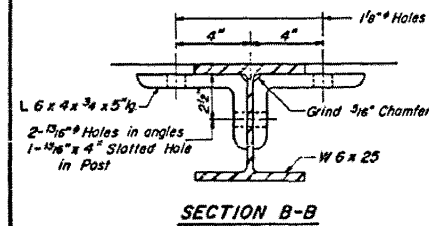


ELEVATION  
All dimensions along inside face of rail

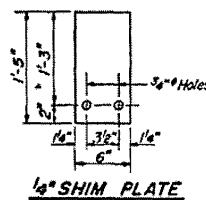


SECTION A-A

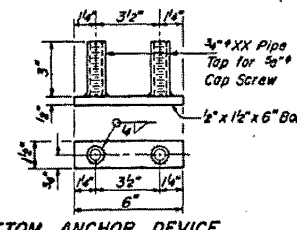
SECTION AT RAIL POST



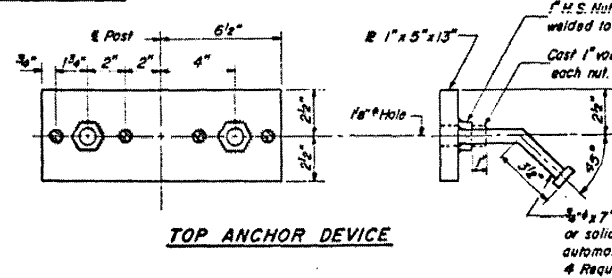
SECTION B-B



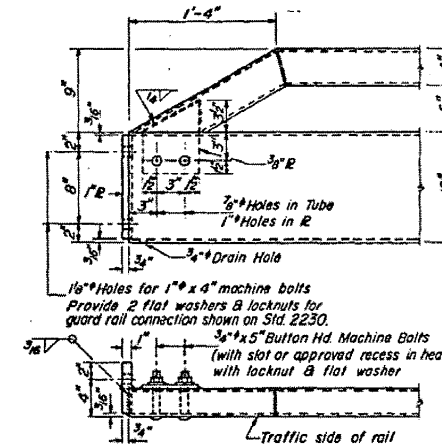
1/8" SHIM PLATE



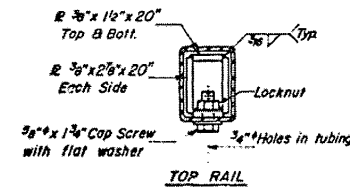
BOTTOM ANCHOR DEVICE



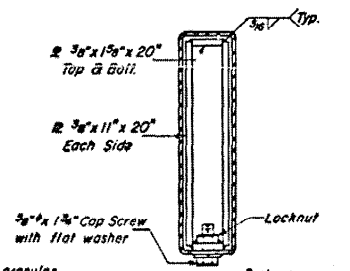
TOP ANCHOR DEVICE



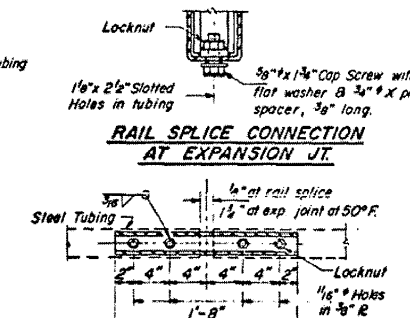
END OF RAIL DETAILS



TOP RAIL



BOTTOM RAIL  
SECTIONS AT RAIL SPLICE



RAIL SPLICE CONNECTION  
AT EXPANSION JT.

PLAN-BOTT. SPLICE R  
TYPICAL

NOTES

- Hollow structural steel tubing shall conform to the requirements of ASTM designation A-500 Grade B or A-501 Structural Steel Tubing.
- All other steel shapes and plates shall conform to the requirements of ASTM designation A-36 except posts shall conform to ASTM A-441.
- Bolts, cap screws, and nuts shall conform to the requirement of ASTM designation A-307 except for high strength bolts, nuts and washers noted which shall conform to ASTM designation A-325.
- All bolts, nuts, cap screws, washers and lock washers shall be galvanized in accordance with ASTM designation A-153.
- All posts, railing, rail splices, anchor devices and angles shall be galvanized after shop fabrication in accordance with ASTM designation A-123 and A-385. Galvanized rail shall not be painted.
- Railing shall be in accordance with Section 50B of the Standard Specifications, except as noted, and shall be paid for at the contract unit price per linear foot for STEEL RAILING, TYPE T.
- All field drilled holes shall be coated with an approved zinc rich paint before erection.
- The lower portion of the post flange in contact with concrete shall receive two coats of asphalt paint conforming to Section 714.09 Type B or place 1/8" fabric bearing pad between the post and concrete.
- The 3/8" high strength bolts used to connect the 6 x 4 x 3/8 angles to the post shall be tightened in accordance with Article 50704(g)(3) of the Standard Specifications. The 1" high strength bolts connecting the angles to the concrete shall be tightened to a snug fit and given an additional 1/8 turn.
- For multi-span bridges, sufficient 4" x 6" x 1-5" galvanized steel shims shall be provided to align rail between adjacent spans. Cost incidental to Steel Railing.

CURB & RAIL  
BILL OF MATERIAL

Bar	No.	Size	Length	Shape
a	32	#4	22'-0"	
e	8	#4	23'-0"	
Reinforcement Bars			Lbs.	590
Glass X Concrete			Cu Yds.	14.4
Steel Railing, Type T			Lin. Ft.	237

TYPE T  
STEEL RAILING  
SBI RT.39 SEC.12 VBR  
PIATT COUNTY  
STA. 289+23

DESIGNED	EXAMINED	10
CHECKED	PASSED	
DRAWN	APPROVED	
CHECKED	DICTIONARY OF HIGHWAY	

R-24 12-10-71 (9'-0" Maximum Post Spacing)

FILE NAME =  
c:\pwwork\PIWIDOT\SHERRERJM\dms86674\0570388-sht-esbuils.dgn

USER NAME = sherrerjm  
PLOT SCALE = 100.0000' / IN.  
PLOT DATE = 10/13/2009

DESIGNED - JMS  
DRAWN - JMS  
CHECKED - JMS  
DATE - 090309

REVISED -  
REVISED -  
REVISED -  
REVISED -

STATE OF ILLINOIS  
DEPARTMENT OF TRANSPORTATION

AS-BUILT PLANS SN 074-0009  
INFORMATION ONLY

SCALE: SHEET NO. OF SHEETS STA. TO STA.

F.A.S. RTE.	SECTION	COUNTY	TOTAL SHEETS	SHEET NO.
1517	12VBR-1	PIATT	168	46
				CONTRACT NO. 70388
ILLINOIS FED. AID PROJECT				