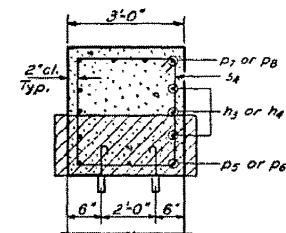
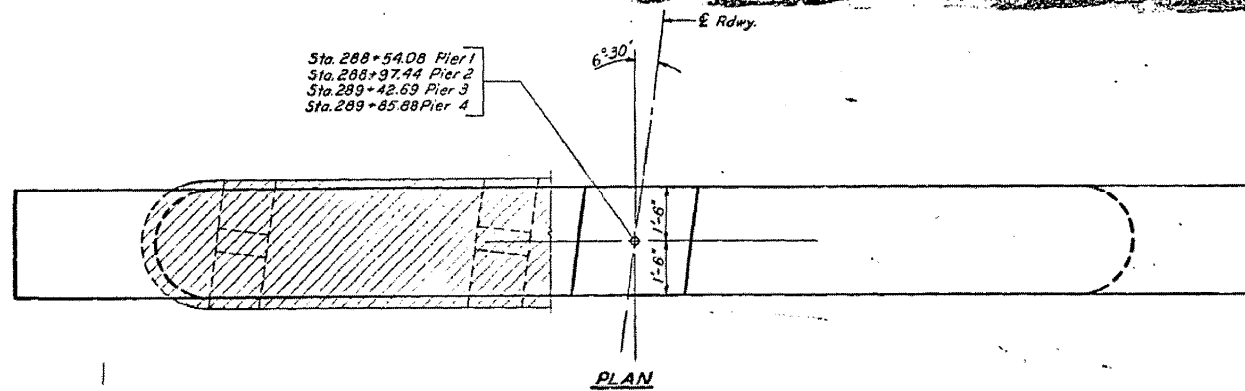


STATE OF ILLINOIS
DEPARTMENT OF TRANSPORTATION

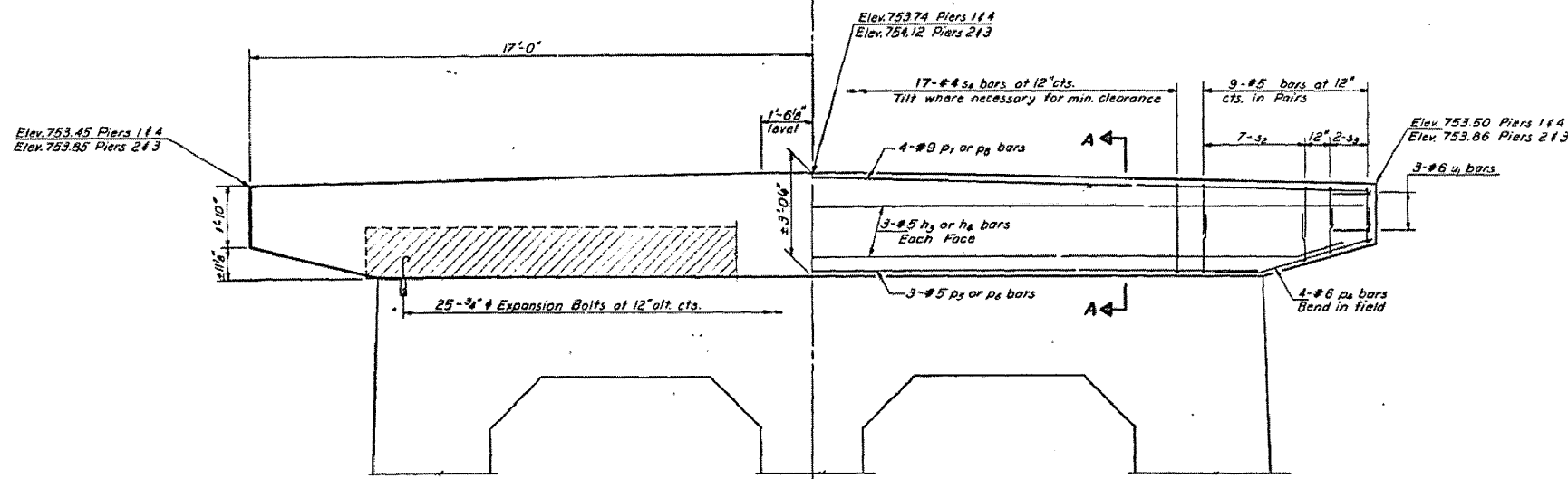
Sta. 288+54.08 Pier 1
Sta. 288+97.44 Pier 2
Sta. 289+42.69 Pier 3
Sta. 289+85.88 Pier 4

Hatched area indicates Concrete Removal.
Expansion Bolts shall be anchored in sound concrete.



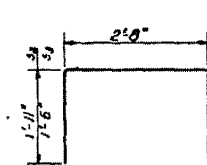
PLAN

SECTION A-A

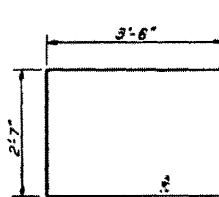


ELEVATION

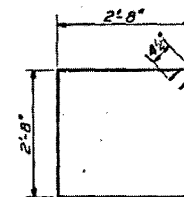
Looking East Piers 1 & 2
Looking West Piers 3 & 4



BARS S2 & S3



BAR V1



BAR S4

FOUR PIERS
BILL OF MATERIAL

Bar	No.	Size	Length	Shape
s2	24	#5	17'-3"	□
s3	24	#5	18'-3"	□
s4	24	#5	5'-9"	□
v1	12	#5	13'-6"	□
p1	12	#9	14'-6"	□
p3	12	#9	17'-3"	□
h3	12	#5	18'-3"	□
h4	12	#5	18'-3"	□
u1	24	#6	9'-7"	□
Class X Concrete			Cu. Yds.	43.3
Reinforcement Bars			Lbs.	5,310
Expansion Bolts #4			Each	100
Concrete Removal			Cu. Yds.	20

PIERS
S.B.I. RT.39 SEC.12VBR
PIATT COUNTY
STATION 289+23

DESIGNED *Ray W. Burt*
CHECKED *James Pince*
DRAWN *R. P. Sumner*
CHECKED JP

EXAMINED _____
PASSED _____
APPROVED _____
DIRECTOR OF HIGHWAYS

FILE NAME =	USER NAME = shererjm	DESIGNED - JMS	REVISED -
ct:\pw\work\PIWIDOT\SHERERJM\dms86674\0570388-sht-esbuilts.dgn		DRAWN - JMS	REVISED -
		CHECKED - JMS	REVISED -
		DATE - 090309	REVISED -

STATE OF ILLINOIS
DEPARTMENT OF TRANSPORTATION

AS-BUILT PLANS SN 074-0009
INFORMATION ONLY

SCALE: SHEET NO. OF SHEETS STA. TO STA.

F.A.S. RTE.	SECTION	COUNTY	TOTAL SHEETS	SHEET NO.
1517	12VBR-1	PIATT	168	48
CONTRACT NO. 70388				

ILLINOIS FED. AID PROJECT