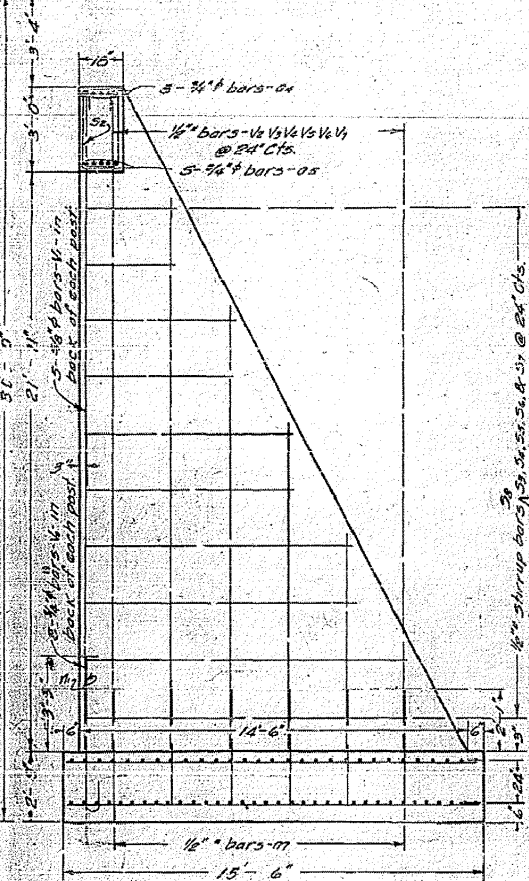


B.M. - S&W in T.P. right Sta. 295+00
 F.I.V. 215.17
 No existing structure.

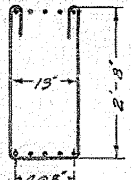
STATE OF ILLINOIS
 DEPARTMENT OF PUBLIC WORKS & BUILDINGS
 DIVISION OF HIGHWAYS

ROUTE NO.	COUNTY	REG.	SHEET	SHEET NO.
39	Piatt	12V	6	5

Plan of Finished Roadway



END ELEVATION

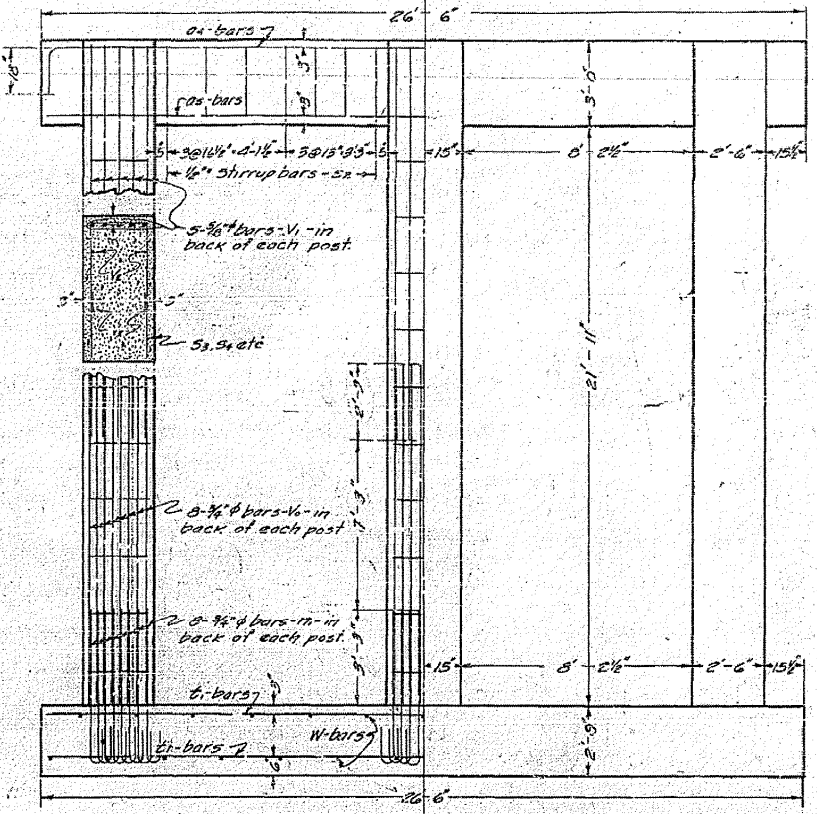


DETAIL OF BAR 3a

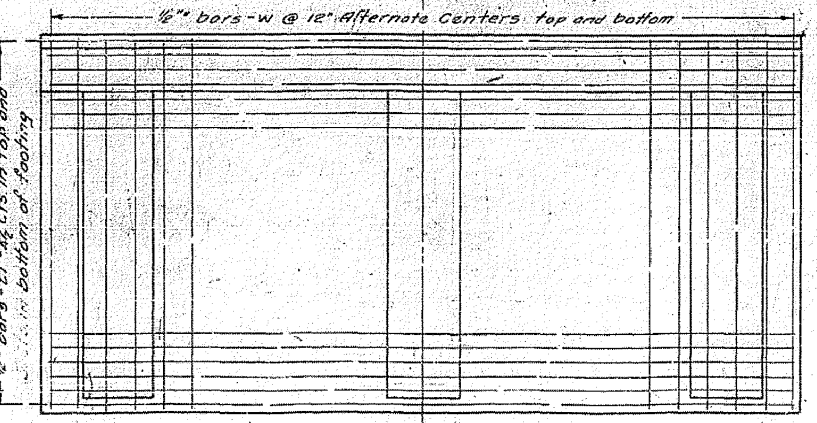
STANDARD	COMPUTED - <i>[Signature]</i>	EXAMINED - <i>[Signature]</i> 10/28
	CHECKED - <i>[Signature]</i>	DESIGNED - <i>[Signature]</i>
	DRAWN - <i>[Signature]</i>	APPROVED - <i>[Signature]</i>
SPECIAL	CHECKED - <i>[Signature]</i>	

APPROVED
[Signature]
 CHIEF HIGHWAY ENGINEER
 Revised - Oct 28 1929
[Signature]

Cr. Elev. 243.417



SHOWING REINFORCEMENT SHOWING OUTLINES
 FRONT ELEVATION



PLAN

BILL OF MATERIAL - REBAR

Bar	No.	Size	Length
a4	10	3/4"	29'-0"
a5	10	3/4"	26'-0"
V6	48	3/8"	13'-0"
V1	30	3/8"	14'-0"
V1	12	1/2"	24'-0"
V2	12	1/2"	21'-0"
V4	12	1/2"	17'-0"
V5	12	1/2"	13'-0"
V6	12	1/2"	9'-0"
V7	12	1/2"	5'-0"
W	48	3/8"	6'-6"
S2	28	1/2"	7'-6"
S2	12	1/2"	24'-0"
S4	12	1/2"	20'-0"
S2	12	1/2"	16'-6"
S6	12	1/2"	12'-0"
S7	12	1/2"	8'-0"
W	72	1/2"	4'-0"
L1	168	1/2"	26'-0"
S8	6	1/2"	28'-0"
W	54	1/2"	14'-3"

Class A Concrete - C.I.V. 200.7
 Reinforcing Steel - Lbs. 9250

Class A concrete shall be used throughout.
 Proportions - 1:2 1/2:4

All reinforcing steel shall be wired securely in place before concrete is poured.

WABASH OVERHEAD
 AT MANSFIELD
 S.B.I. ROUTE 39 SECTION 12V
 PIATT COUNTY
 STATION 282+23

FILE NAME =	USER NAME = shererjm	DESIGNED - JMS	REVISED -
et:\pw_work\PIWIDOT\SHERERJM\dms86674\0570388-sht-esbuilts.dgn		DRAWN - JMS	REVISED -
		CHECKED - JMS	REVISED -
		DATE - 090309	REVISED -

STATE OF ILLINOIS
 DEPARTMENT OF TRANSPORTATION

AS-BUILT PLANS SN 074-0009
 INFORMATION ONLY

SCALE: SHEET NO. OF SHEETS STA. TO STA.

F.A.S. RTE.	SECTION	COUNTY	TOTAL SHEETS	SHEET NO.
1517	12VBR-1	PIATT	168	50
CONTRACT NO. 70388				

ILLINOIS FED. AID PROJECT