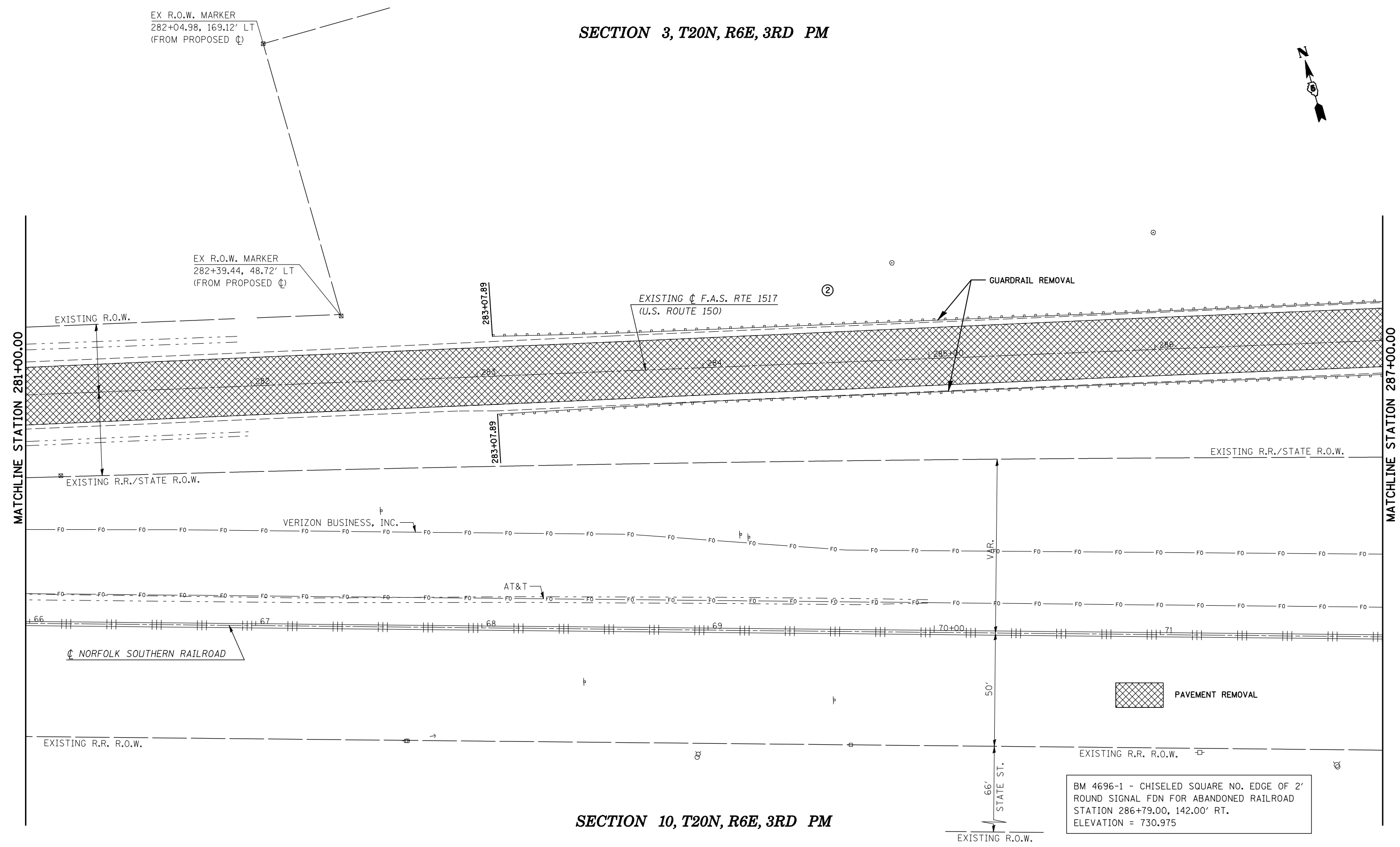


SECTION 3, T20N, R6E, 3RD PM



SECTION 10, T20N, R6E, 3RD PM

BM 4696-1 - CHISELED SQUARE NO. EDGE OF 2' ROUND SIGNAL FDN FOR ABANDONED RAILROAD STATION 286+79.00, 142.00' RT. ELEVATION = 730.975

FILE NAME =	USER NAME = shererjm	DESIGNED - JMS	REVISED -
ct:\pw\work\PIWIDOT\SHERERJM\dms86674\0570388-shr-rem.dgn		DRAWN - JMS	REVISED -
	PLOT SCALE = 40.0000' / IN.	CHECKED -	REVISED -
	PLOT DATE = 10/13/2009	DATE - 051909	REVISED -

STATE OF ILLINOIS
DEPARTMENT OF TRANSPORTATION

REMOVAL DETAILS

SCALE: 1" = 20' SHEET NO. 5 OF 8 SHEETS STA. 281+00.00 TO STA. 287+00.00

F.A.S. RTE.	SECTION	COUNTY	TOTAL SHEETS	SHEET NO.
1517	12VBR-1	PIATT	168	55
CONTRACT NO. 70388				
FED. ROAD DIST. NO. ILLINOIS FED. AID PROJECT				