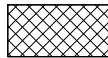

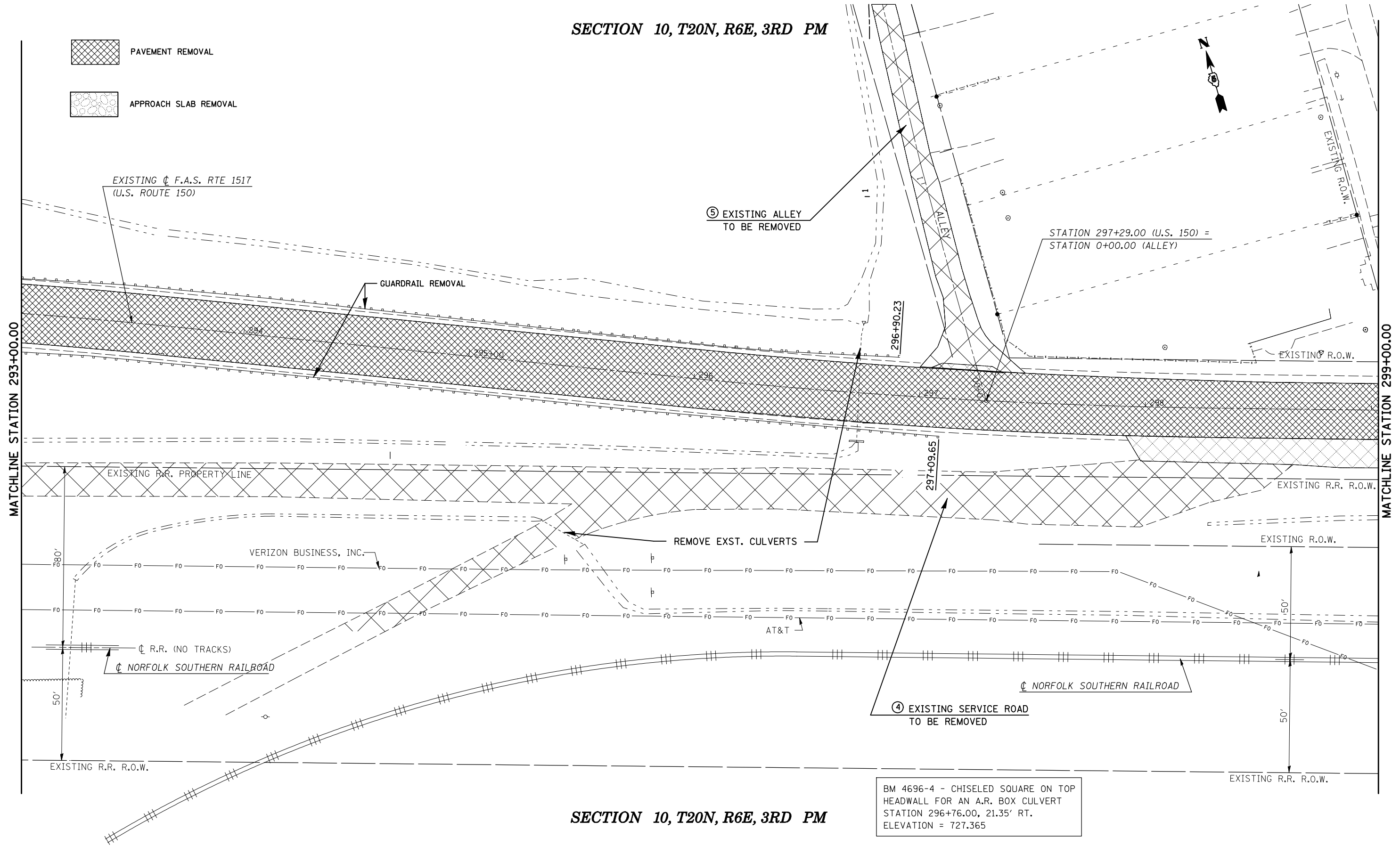


SECTION 10, T20N, R6E, 3RD PM

-  PAVEMENT REMOVAL
-  APPROACH SLAB REMOVAL



SECTION 10, T20N, R6E, 3RD PM

BM 4696-4 - CHISELED SQUARE ON TOP HEADWALL FOR AN A.R. BOX CULVERT
 STATION 296+76.00, 21.35' RT.
 ELEVATION = 727.365

FILE NAME =	USER NAME = shererjm	DESIGNED - JMS	REVISED -
ct:\pw\work\PWIDOT\SHERERJM\dms86674\0570388-shr-rem.dgn		DRAWN - JMS	REVISED -
	PLOT SCALE = 40.0000' / IN.	CHECKED -	REVISED -
	PLOT DATE = 10/13/2009	DATE - 051909	REVISED -

STATE OF ILLINOIS
 DEPARTMENT OF TRANSPORTATION

REMOVAL DETAILS

SCALE: 1" = 20' SHEET NO. 7 OF 8 SHEETS STA. 293+00.00 TO STA. 299+00.00

F.A.S. RTE.	SECTION	COUNTY	TOTAL SHEETS	SHEET NO.
1517	12VBR-1	PIATT	168	57
CONTRACT NO. 70388				
FED. ROAD DIST. NO. ILLINOIS FED. AID PROJECT				