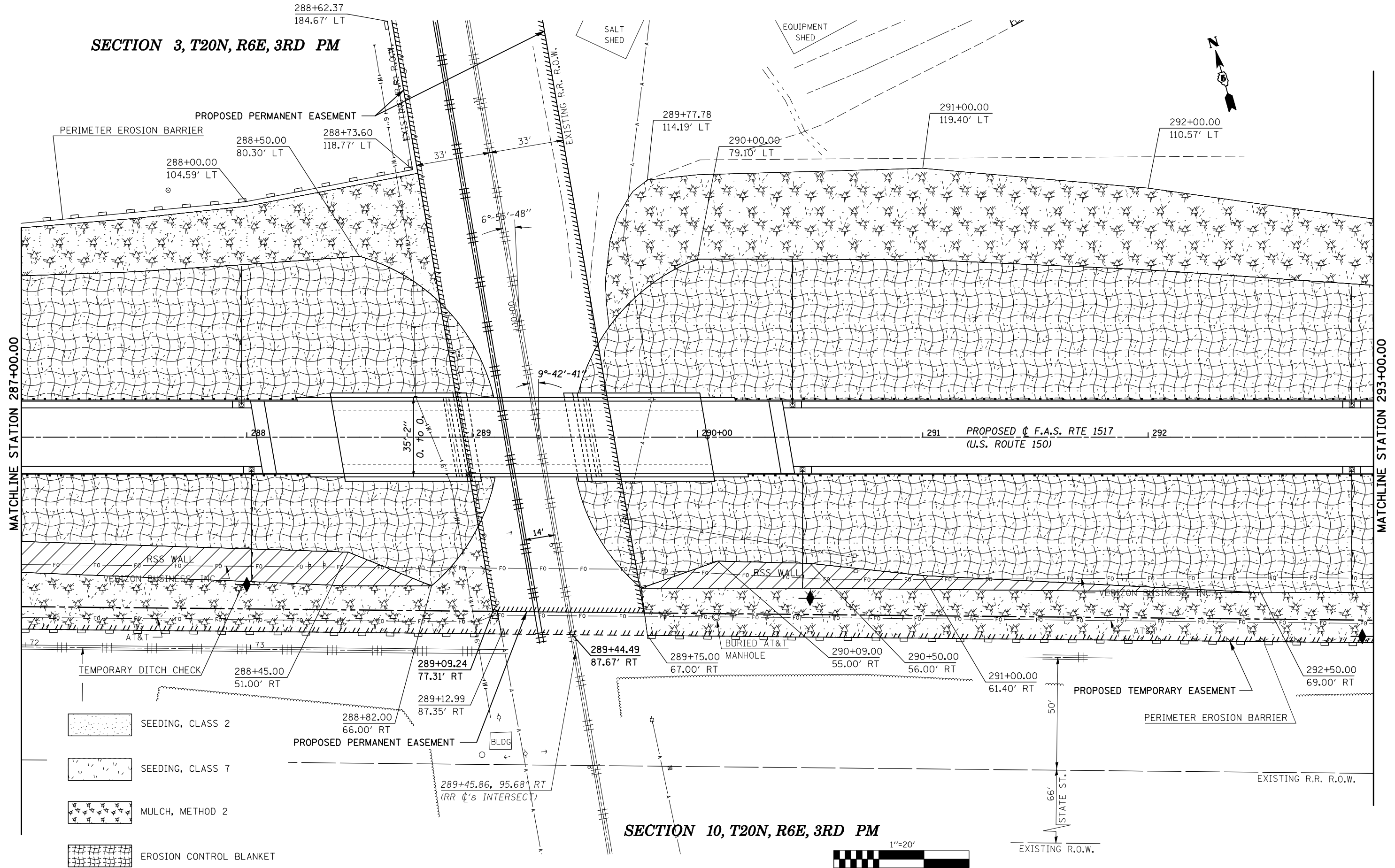
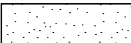
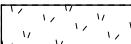


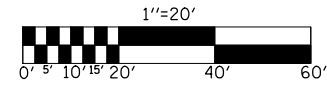


SECTION 3, T20N, R6E, 3RD PM

SECTION 10, T20N, R6E, 3RD PM



-  SEEDING, CLASS 2
-  SEEDING, CLASS 7
-  MULCH, METHOD 2
-  EROSION CONTROL BLANKET



FILE NAME =	USER NAME = shererjm	DESIGNED - CMS	REVISED -
ct:\pw\work\PWIDOT\SHERERJM\dms86674\0570388-sht-eros.dgn	70388-sht-eros.dgn	DRAWN - JRP	REVISED -
PLOT SCALE = 40.0000' / IN.		CHECKED -	REVISED -
PLOT DATE = 10/13/2009		DATE - 03-25-2008	REVISED -

**STATE OF ILLINOIS
DEPARTMENT OF TRANSPORTATION**

EROSION CONTROL DETAILS

SCALE: 1" = 20' SHEET NO. 5 OF 9 SHEETS STA. TO STA.

F.A.S. RTE.	SECTION	COUNTY	TOTAL SHEETS	SHEET NO.
1517	12VBR-1	PIATT	168	63
CONTRACT NO. 70388				
FED. ROAD DIST. NO. ILLINOIS FED. AID PROJECT				