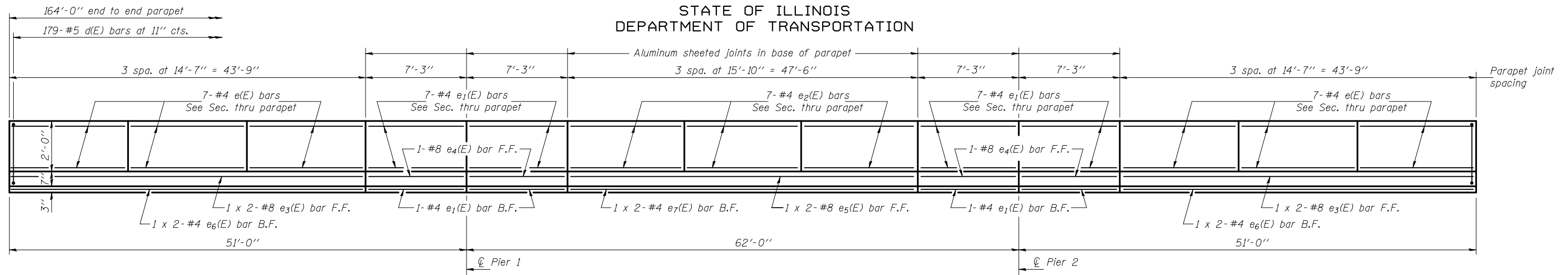
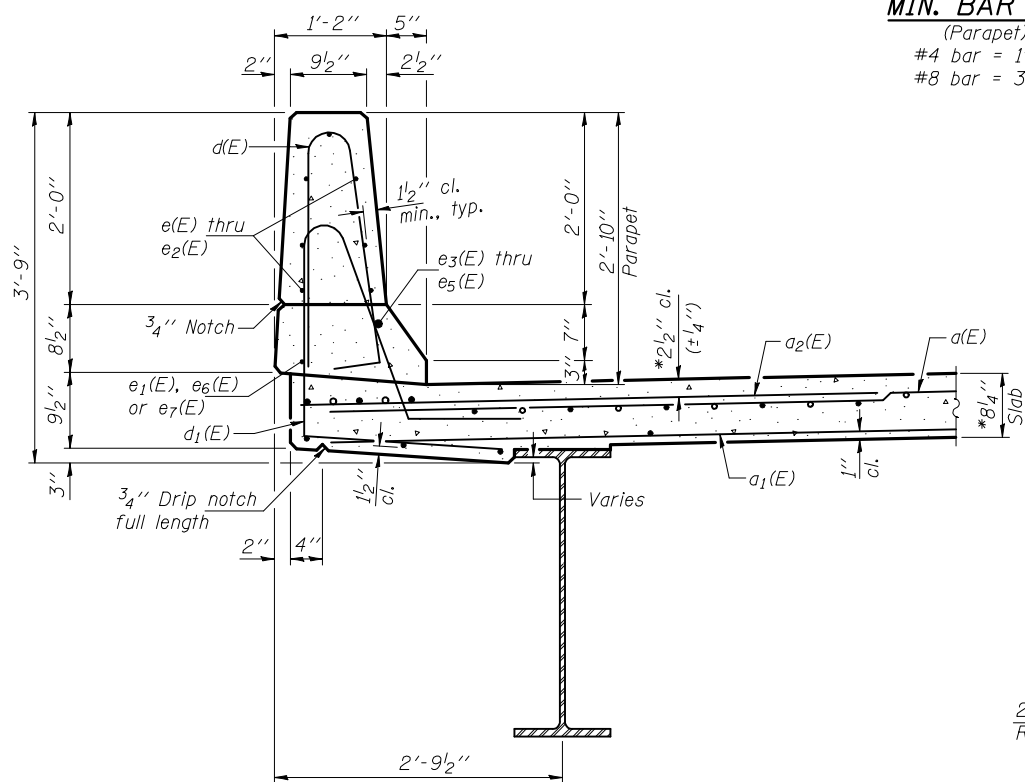


STATE OF ILLINOIS
DEPARTMENT OF TRANSPORTATION



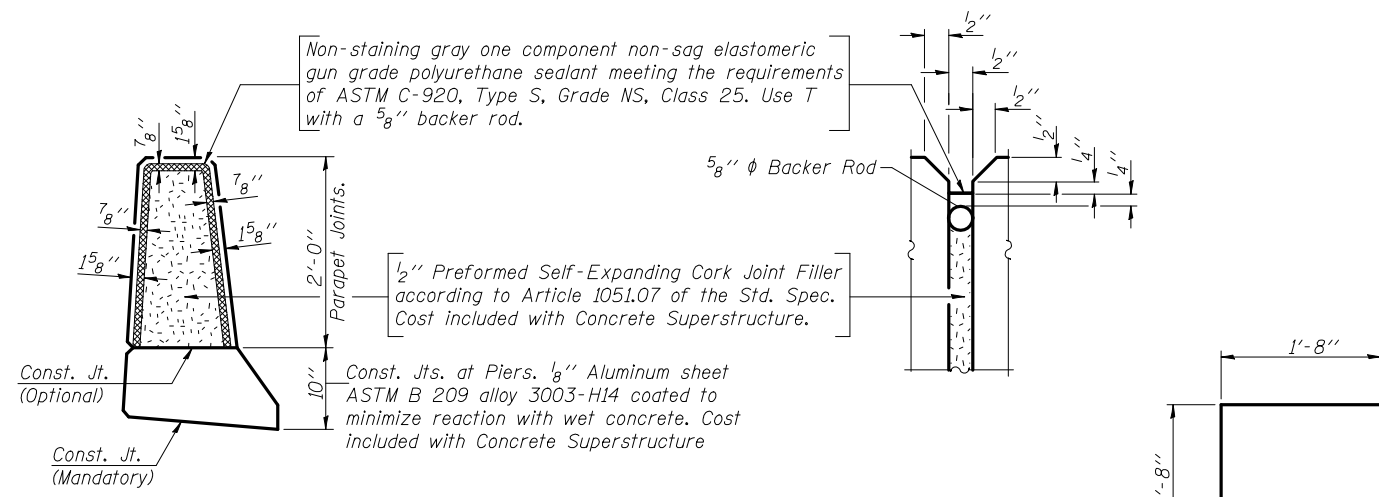
INSIDE ELEVATION OF PARAPET

MIN. BAR LAP
(Parapet)
#4 bar = 1'-4"
#8 bar = 3'-5"



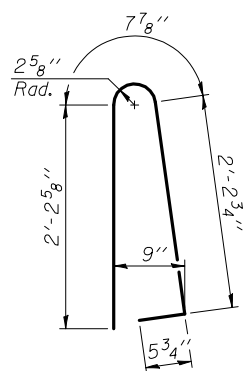
SECTION THRU PARAPET

*Prior to grinding.

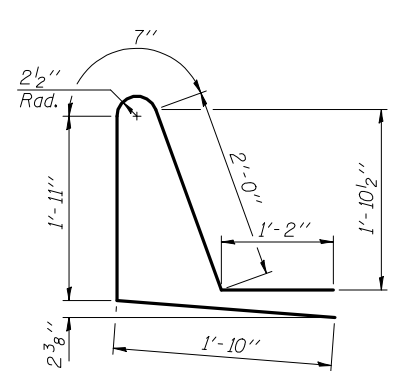


PARAPET JOINT DETAILS

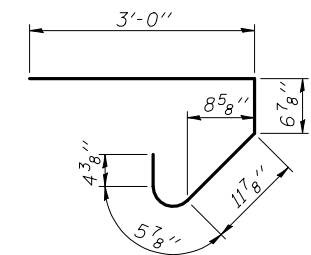
BAR v(E)



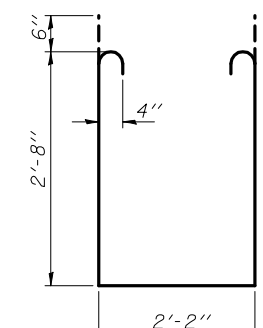
BAR d(E)



BAR d1(E)



BAR s(E)



BAR s1(E)

**SUPERSTRUCTURE
BILL OF MATERIAL**

Bar	No.	Size	Length	Shape
d(E)	280	#5	34'-7"	—
a1(E)	197	#5	34'-0"	—
a2(E)	560	#6	6'-0"	—
a3(E)	4	#5	35'-0"	—
b(E)	190	#5	34'-6"	—
b1(E)	70	#6	32'-2"	—
b2(E)	216	#5	29'-1"	—
d(E)	358	#5	5'-7"	┘
d1(E)	358	#5	7'-6"	┘
e(E)	84	#4	14'-4"	—
e1(E)	64	#4	7'-0"	—
e2(E)	42	#4	15'-7"	—
e3(E)	8	#8	23'-6"	—
e4(E)	8	#8	7'-0"	—
e5(E)	4	#8	25'-4"	—
e6(E)	8	#4	22'-5"	—
e7(E)	4	#4	24'-4"	—
m(E)	10	#6	35'-4"	—
m1(E)	24	#6	8'-3"	—
m2(E)	10	#6	5'-8"	—
m3(E)	4	#6	2'-6"	—
s(E)	82	#5	5'-5"	┘
s1(E)	72	#4	8'-6"	┘
v(E)	72	#5	3'-4"	┘
Reinforcement Bars, Epoxy Coated		Pound		48630
Concrete Superstructure		Cu. Yds.		210.1

Bars indicated thus 1 x 2-#5 etc. indicates 1 line of bars with 2 lengths per line.

**SUPERSTRUCTURE DETAILS
STRUCTURE NO. 074-0086**

DESIGNED	D.P. Narielwala
CHECKED	S.M. Ryan
DRAWN	h.t. duong
CHECKED	DPN/SMR

November 25, 2009
EXAMINED *Thomas J. Domagala*
PASSED *Ralph E. Anderson*

SHEET NO. 9 25 SHEETS	F.A.S. RTE.	SECTION	COUNTY	TOTAL SHEETS	SHEET NO.
	1517	12VBR-1	PIATT	168	94
			CONTRACT NO. 70388		
FED. ROAD DIST. NO. _ ILLINOIS FED. AID PROJECT					