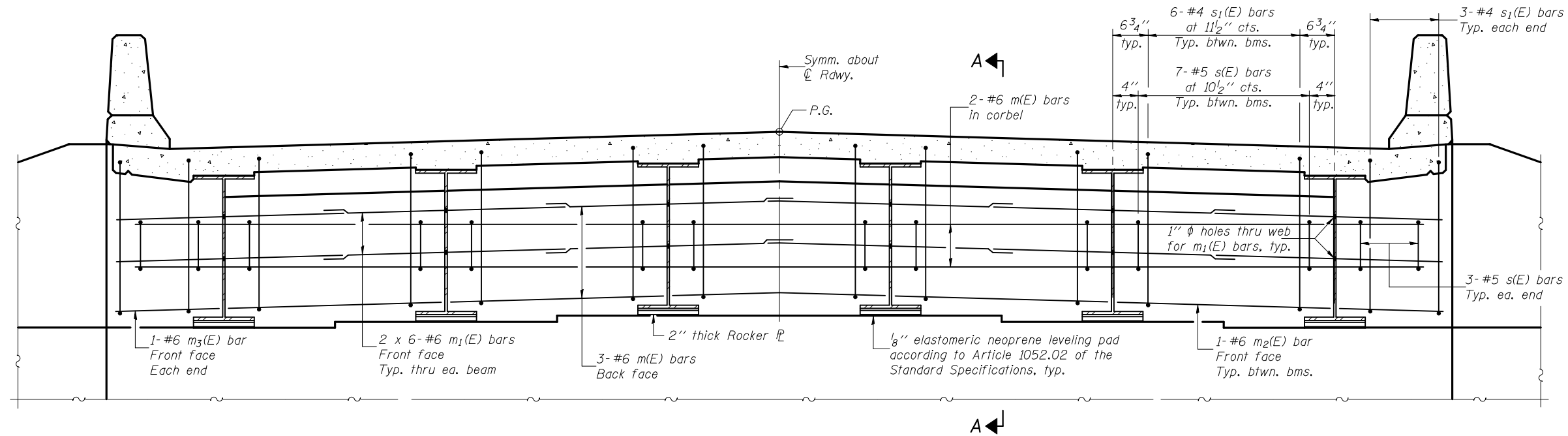
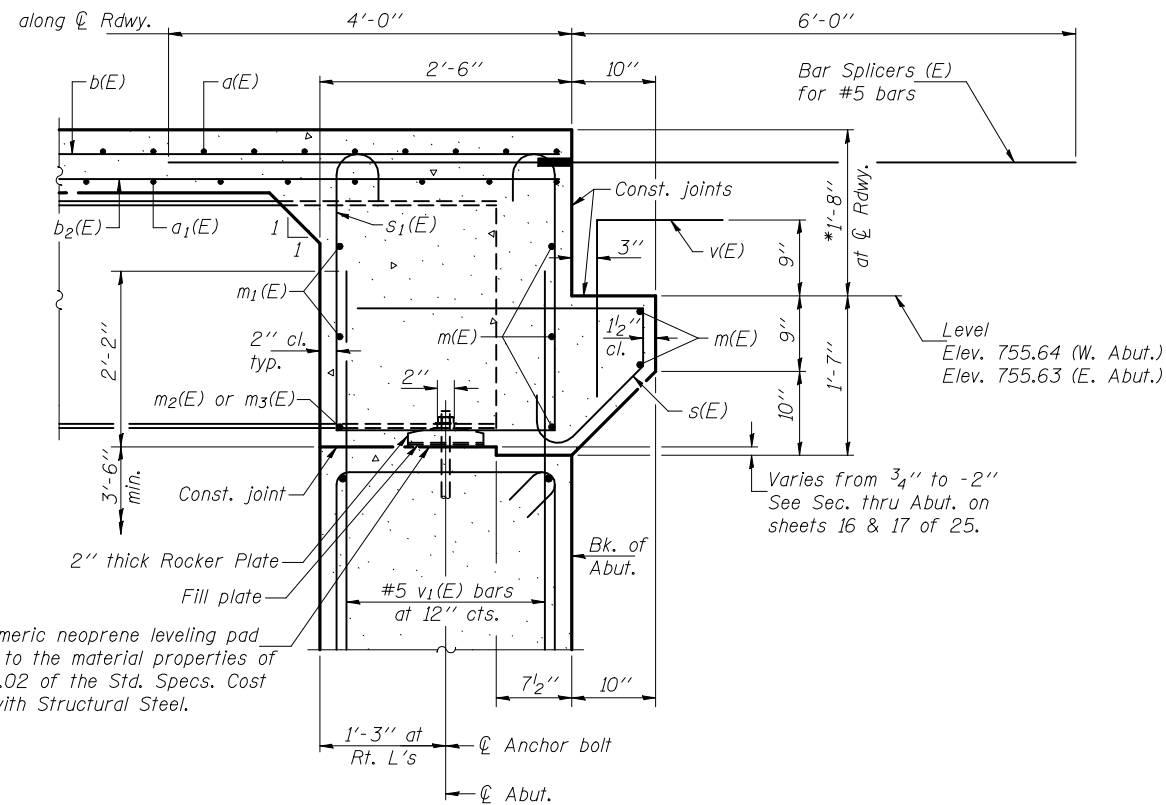


STATE OF ILLINOIS  
DEPARTMENT OF TRANSPORTATION



DIAPHRAGM ELEVATION AT ABUTMENT



SECTION A-A

Dimensions at right L's to abutment, except as shown.

\*Prior to grinding.

Notes: Reinforcement bars in diaphragm are billed with superstructure on sheet 9 of 25.  
Concrete in diaphragm is included with Concrete Superstructure on sheet 9 of 25.  
For details of bars s(E) & s1(E) see sheet 9 of 25.  
The s(E) and s1(E) bars shall be placed parallel to the beams.  
Spacing for these bars shall be at right angles to the beams.

MIN. BAR LAP  
#6 bar = 2'-9"

DESIGNED	D.P. Narielwala
CHECKED	S.M. Ryan
DRAWN	h.t. duong
CHECKED	DPN/SMR

EXAMINED	November 25, 2009
PASSED	Thomas J. Domagala ENGINEER OF BRIDGE DESIGN
	Ralph E. Anderson ENGINEER OF BRIDGES AND STRUCTURES

DIAPHRAGM DETAILS  
STRUCTURE NO. 074-0086

SHEET NO. 10 25 SHEETS	F.A.S. RTE.	SECTION	COUNTY	TOTAL SHEETS	SHEET NO.
	1517	12VBR-1	PIATT	168	95
CONTRACT NO. 70388					
FED. ROAD DIST. NO. _ ILLINOIS FED. AID PROJECT					