

US 150 PROP. & CURVE DATA
 PI STA. = 273+60.59
 Δ = 0° 36' 13" (LT)
 D = 0° 29' 58"
 R = 11,470.00'
 T = 60.41'
 L = 120.83'
 E = 0.16'
 P.C. STA. = 273+00.18
 P.T. STA. = 274+01.01

US 150 EXIST. & CURVE DATA
 PI STA. = 276+75.42
 Δ = 2° 54' 42" (LT)
 D = 0° 27' 45"
 R = 12,387.92'
 T = 314.83'
 L = 629.53'
 E = 4.00'
 P.C. STA. = 273+60.59
 P.T. STA. = 279+90.12

5547001
 NORFOLK SOUTHERN RAILWAY COMPANY

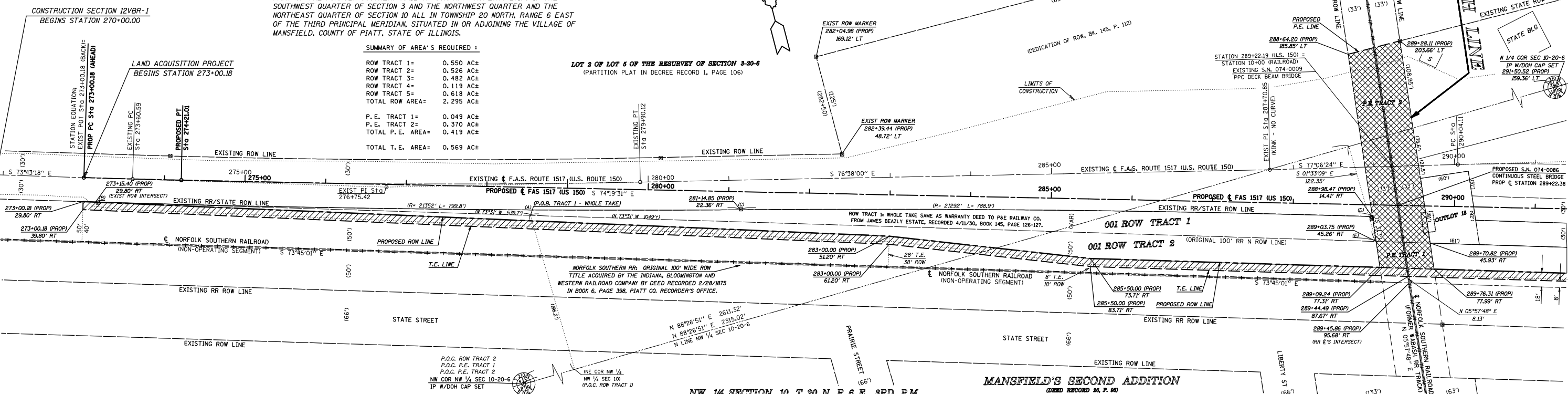
- ROW AREA REQUIRED = 2.295 AC±
- PERMANENT EASEMENT AREA = 0.419 AC±
- TEMPORARY EASEMENT AREA = 0.569 AC±

PART OF THE NORFOLK SOUTHERN RAILWAY COMPANY PROPERTY LYING IN THE SOUTHWEST QUARTER OF SECTION 3 AND THE NORTHWEST QUARTER AND THE NORTHEAST QUARTER OF SECTION 10 ALL IN TOWNSHIP 20 NORTH, RANGE 6 EAST OF THE THIRD PRINCIPAL MERIDIAN, SITUATED IN OR ADJOINING THE VILLAGE OF MANSFIELD, COUNTY OF PIATT, STATE OF ILLINOIS.

SUMMARY OF AREA'S REQUIRED:

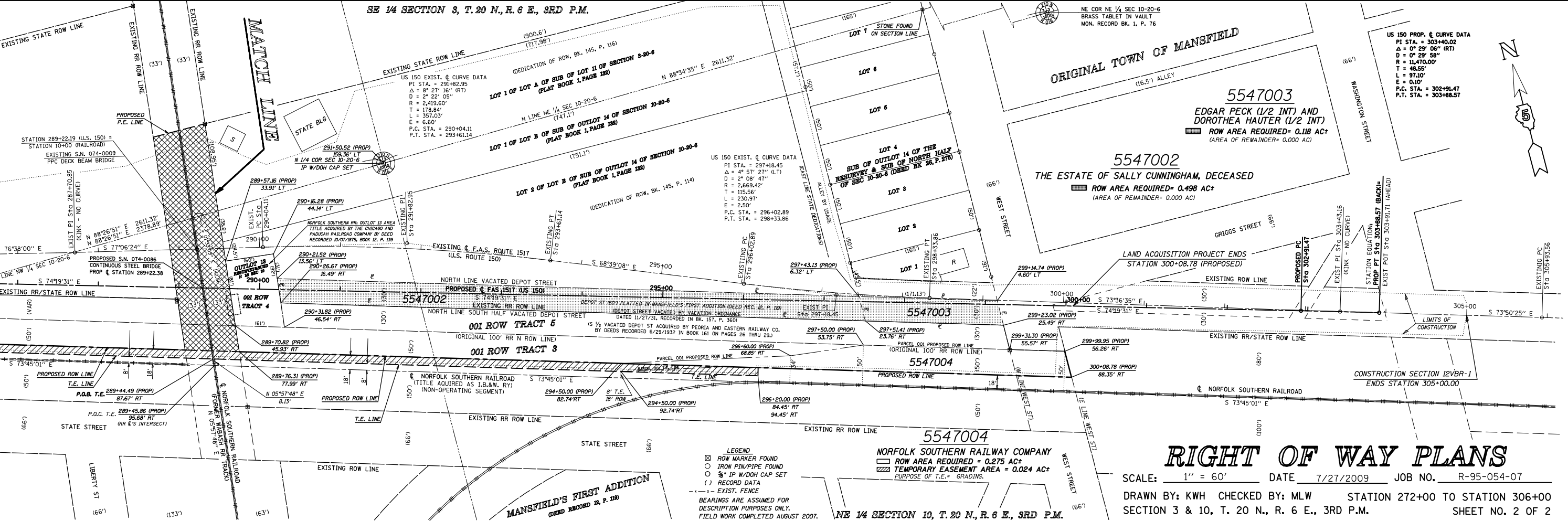
ROW TRACT 1 =	0.550 AC±
ROW TRACT 2 =	0.526 AC±
ROW TRACT 3 =	0.482 AC±
ROW TRACT 4 =	0.119 AC±
ROW TRACT 5 =	0.618 AC±
TOTAL ROW AREA =	2.295 AC±
P. E. TRACT 1 =	0.049 AC±
P. E. TRACT 2 =	0.370 AC±
TOTAL P. E. AREA =	0.419 AC±
TOTAL T. E. AREA =	0.569 AC±

LOT 2 OF LOT 5 OF THE RESURVEY OF SECTION 3-20-6
 (PARTITION PLAT IN DECREE RECORD 1, PAGE 106)



NW 14 SECTION 10, T. 20 N., R. 6 E., 3RD P.M.

MANSFIELD'S SECOND ADDITION



RIGHT OF WAY PLANS

SCALE: 1" = 60' DATE 7/27/2009 JOB NO. R-95-054-07
 DRAWN BY: KWH CHECKED BY: MLW STATION 272+00 TO STATION 306+00
 SECTION 3 & 10, T. 20 N., R. 6 E., 3RD P.M. SHEET NO. 2 OF 2