

F.A.P. RTE.	SECTION	COUNTY	TOTAL SHEETS	SHEET NO.
315	120BR-1	MCLEAN	49	1
FED. ROAD DIST. NO.	ILLINOIS	CONTRACT NO. 70524		

STATE OF ILLINOIS
DEPARTMENT OF TRANSPORTATION
DIVISION OF HIGHWAYS

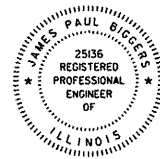
PROPOSED
HIGHWAY PLANS

FAP ROUTE 315 (US 136)
SECTION 120BR-1
PROJECT ACF-0315(057)
MCLEAN COUNTY
C-95-045-06
BRIDGE REPLACEMENT
PRAIRIE CREEK
7 MILES WEST OF US 51

SECTION 120-BR-1 INCLUDES:
 EXISTING S.N. 057-0091 AT STA. 126+95.70
 CARRYING F.A.P. RTE. 315 (US 136)
 OVER PRAIRIE CREEK
 TO BE REMOVED AND REPLACED WITH
 A NEW 39'-2" WIDE THREE SPAN CONTINUOUS
 STEEL BEAM BRIDGE (S.N. 057-2045) WITH A
 157' SPAN AND INTERGRAL ABUTMENTS.

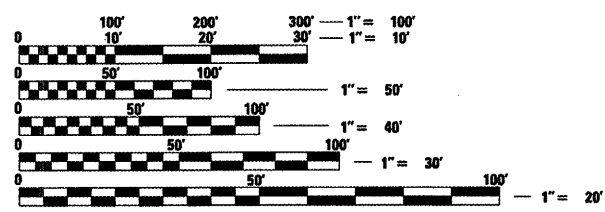
FOR INDEX OF SHEETS, SEE SHEET NO. 2

James Paul Biggers
 JAMES PAUL BIGGERS, P.E.
 DATE 10/16/09
 LICENSE EXPIRES 11/30/09



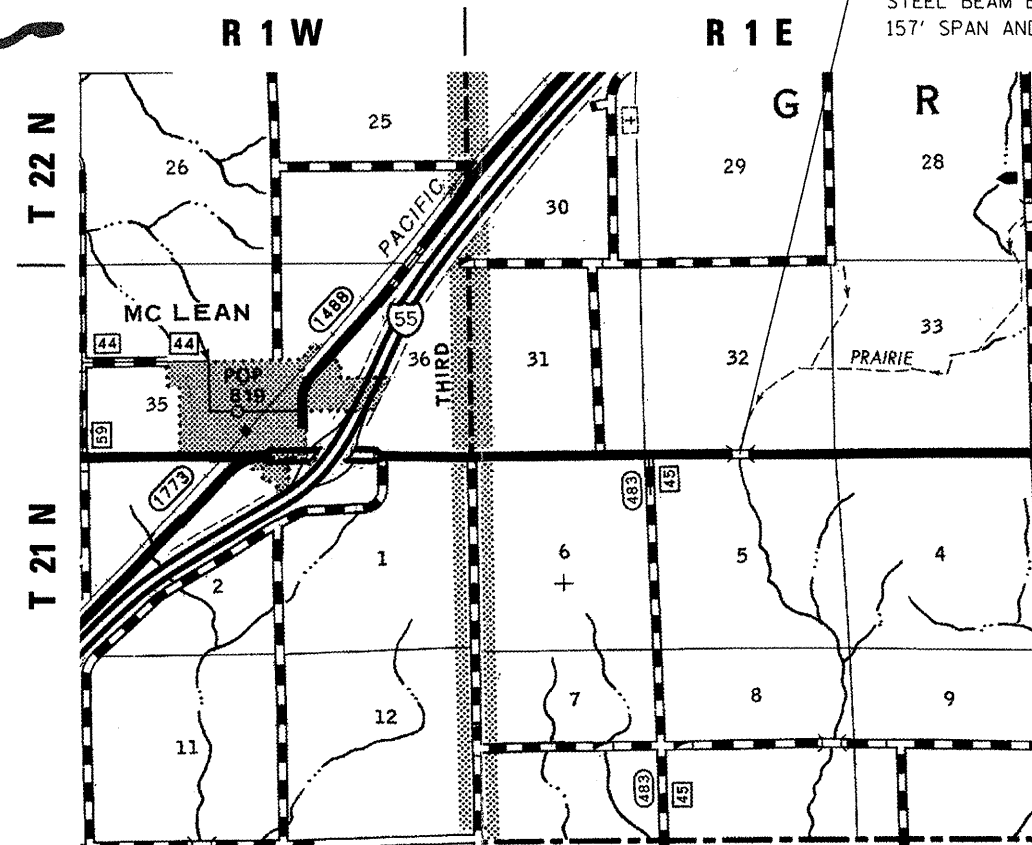
PLANS PREPARED BY:

JOHNSON, DEPP & QUISENBERRY
 CONSULTING ENGINEERS
 6450 South Sixth Street Road, Suite B Springfield, Illinois 62712
 Phone: (217) 529-4534 Fax: (217) 529-8278



FULL SIZE PLANS HAVE BEEN PREPARED USING STANDARD ENGINEERING SCALES. REDUCED SIZED PLANS WILL NOT CONFORM TO STANDARD SCALES. IN MAKING MEASUREMENTS ON REDUCED PLANS, THE ABOVE SCALES MAY BE USED.

J.U.L.I.E.
 JOINT UTILITY LOCATION INFORMATION FOR EXCAVATION
 1-800-892-0123
 OR 811 FUNKS GROVE TOWNSHIP

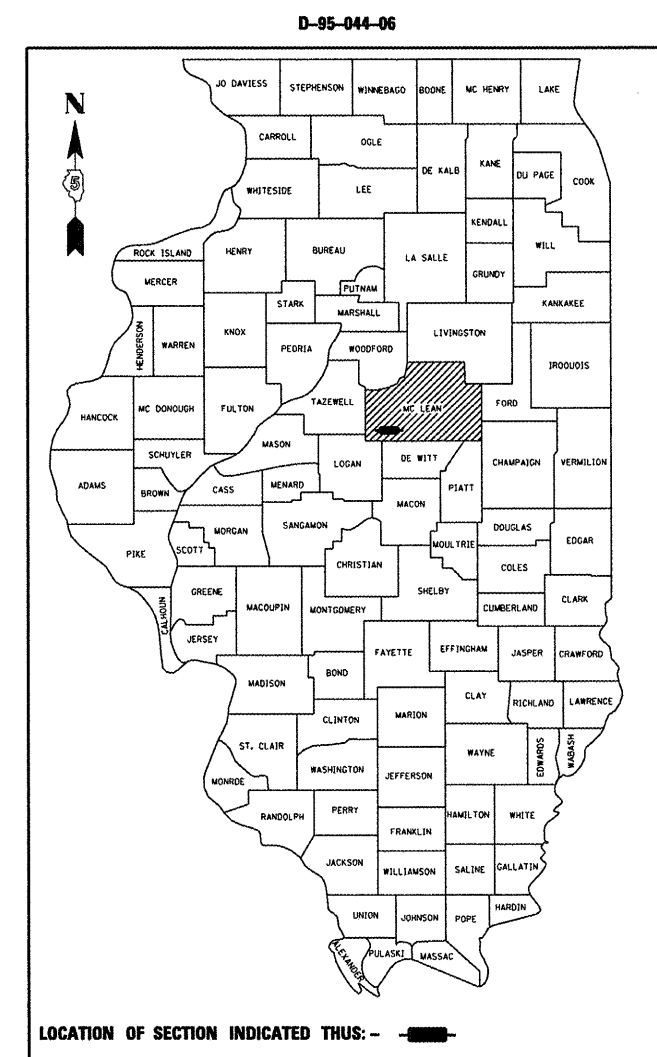


LOCATION MAP



GROSS LENGTH = 1030.00 FEET = 0.195 MILES
NET LENGTH = 1030.00 FEET = 0.195 MILES

PROJECT ENGINEER NANCY FASIG
PROJECT MANAGER JASON STULTS
 DISTRICT 5 NO. (217)465-4181
CONTRACT NO. 70524



LOCATION OF SECTION INDICATED THUS: - [Symbol] -

OTHER PRINCIPAL ARTERIAL
 F.A.P. 315 (US 136)
 ADT (2007) = 2,700
 PV = 63.5% SU = 11.4% MU = 25.1%
 DESIGN SPEED = 55 MPH

STATE OF ILLINOIS
 DEPARTMENT OF TRANSPORTATION
 DIVISION OF HIGHWAYS

SUBMITTED 10/20 20 09
Joseph K. Cowser
 DEPUTY DIRECTOR OF HIGHWAYS, REGION ENGINEER

December 4, 20 09
Charles J. Ingersoll
 ENGINEER OF DESIGN AND ENVIRONMENT

December 4, 20 09
Christine M. Reed
 DIRECTOR OF HIGHWAYS, CHIEF ENGINEER

PRINTED BY THE AUTHORITY
OF THE STATE OF ILLINOIS