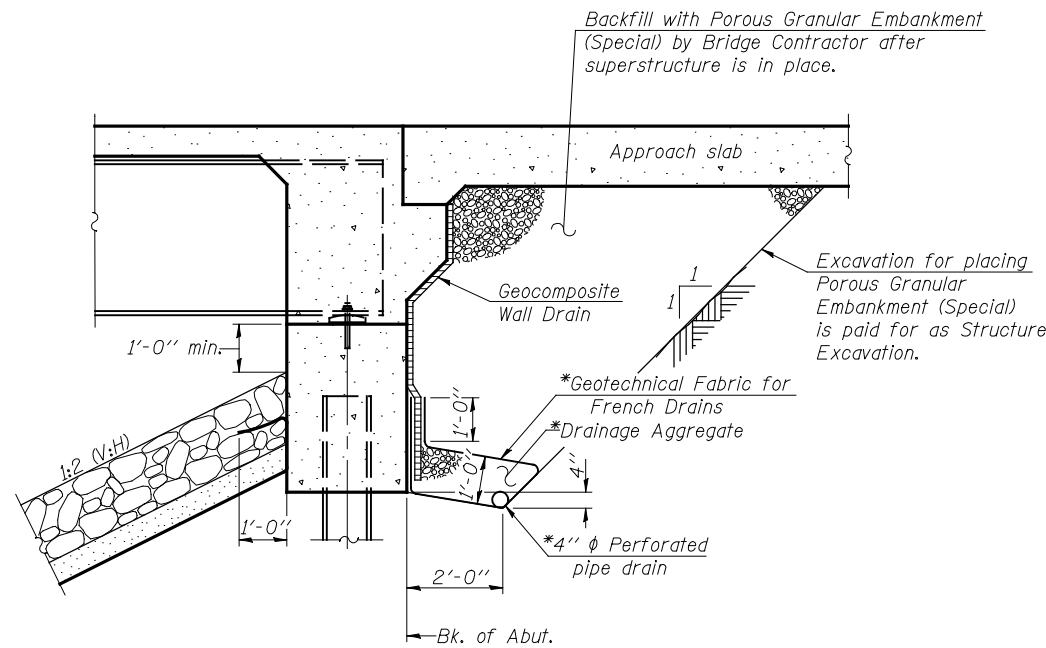


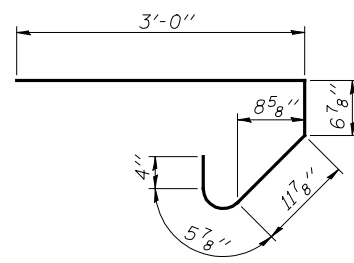
STATE OF ILLINOIS
DEPARTMENT OF TRANSPORTATION



SECTION THRU INTEGRAL ABUTMENT

*Included in the cost of Pipe Underdrains for Structures.

Note:
All drainage system components shall extend to 2'-0" from the end of each wingwall except an outlet pipe shall extend until intersecting with the side slopes. The pipes shall drain into concrete headwalls. (See Article 601.05 of the Standard Specifications and Highway Standard 601101).

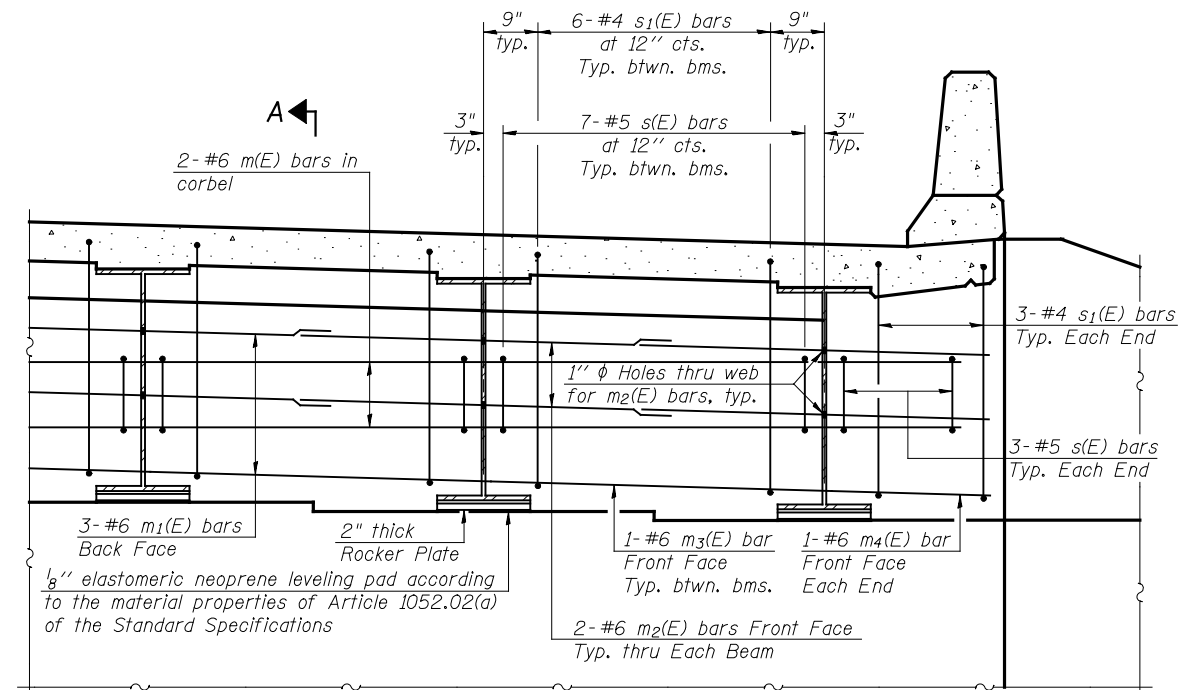


BAR s(E)

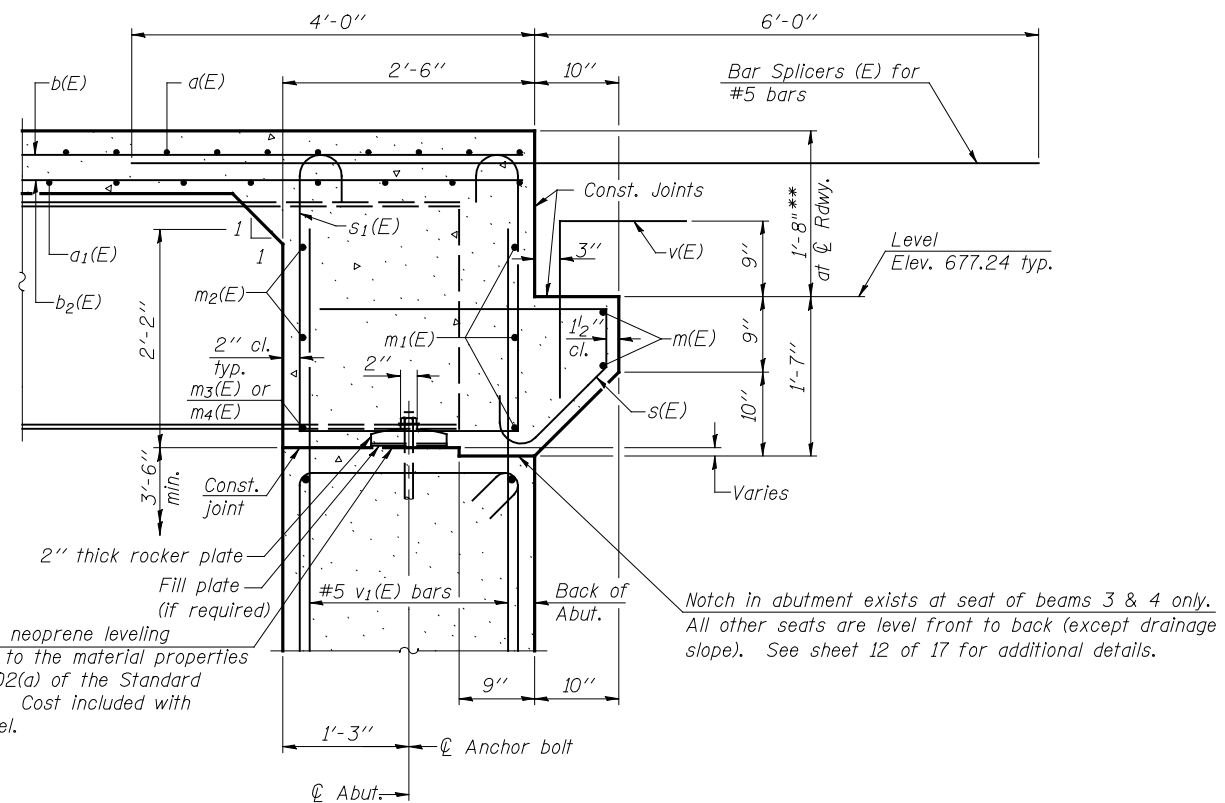
Notes:
Reinforcement bars in diaphragm are billed with superstructure on sheet 7 of 17.
Concrete in diaphragm is included with Concrete Superstructure on sheet 7 of 17.
For details of bar s₁(E) see sheet 7 of 17.
Bar v₁(E) is billed with the abutments on sheet 12 of 17.

MIN. BAR LAP

#6 bar = 2'-9"



DIAPHRAGM ELEVATION AT ABUTMENT



SECTION A-A

** Before grinding according to Bridge Smoothness Specification.

McDonough-Whitlow, P.C.
Consulting Engineers & Land Surveyors
138 East Wood Street
Hillboro, IL 62049
Phone: 217.332.9233
Fax: 217.332.6300
PROFESSIONAL DESIGNER No. 184-002754

DESIGNED: CMF	DRAWN: RNH
CHECKED: TMM	CHECKED: TMM

**INTEGRAL ABUTMENT
DIAPHRAGM DETAILS
U.S. 136 OVER
PRAIRIE CREEK
STRUCTURE NO. 057-0245**

SHEET 6 OF 17	F.A.P. RTE. 315	SECTION 120BR-1	COUNTY MCLEAN	TOTAL SHEETS 49	SHEET NO. 17
	STA. 126+95.70			CONTRACT NO. 70524	
FED. ROAD DIST. NO.		ILLINOIS FED. AID PROJECT			