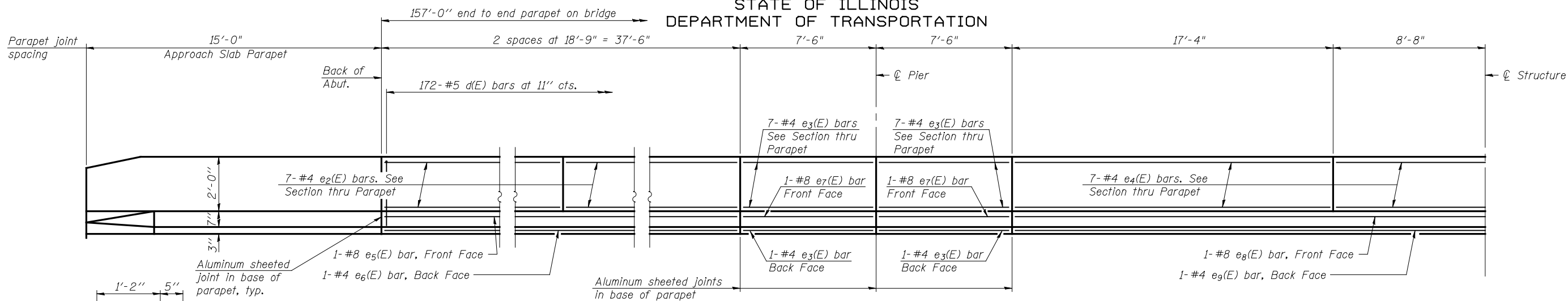
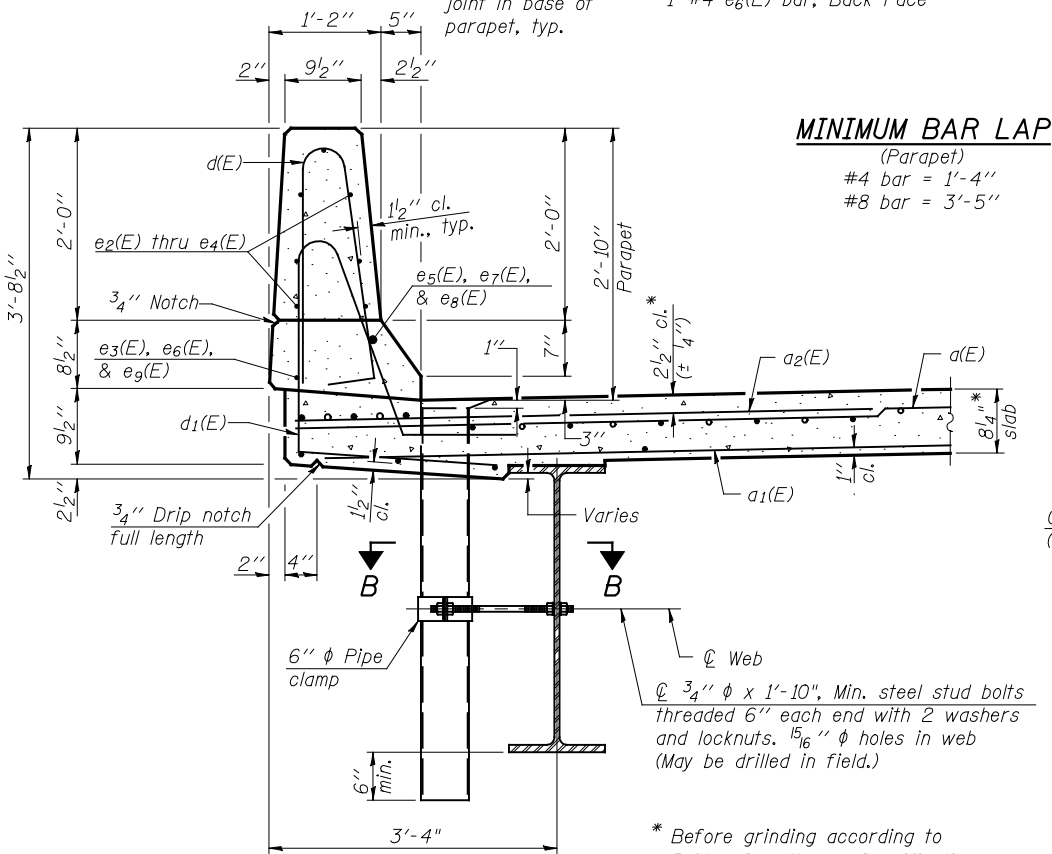


STATE OF ILLINOIS
DEPARTMENT OF TRANSPORTATION

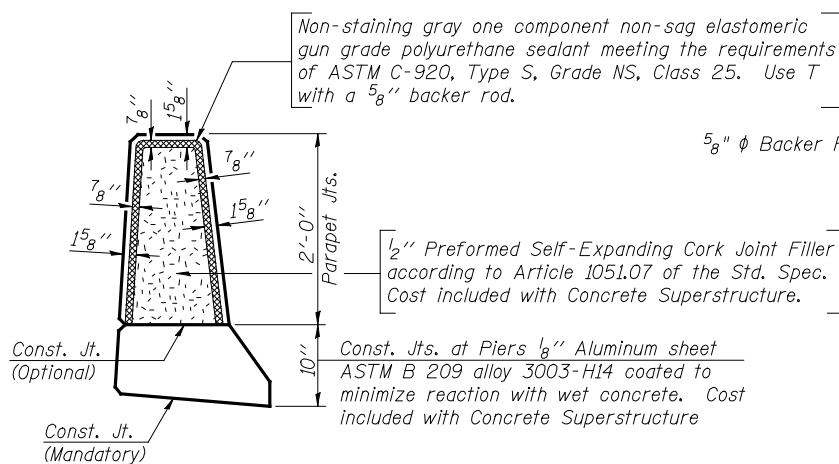


INSIDE ELEVATION OF PARAPET



SECTION THRU PARAPET

MINIMUM BAR LAP
(Parapet)
#4 bar = 1'-4"
#8 bar = 3'-5"

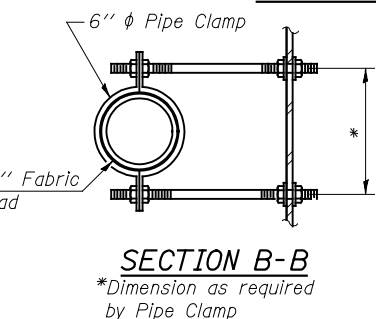


PARAPET JOINT DETAILS

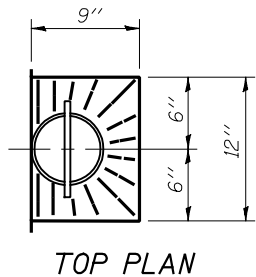
Notes:
The exterior surfaces of the floor drains need not be painted.
Fiberglass pipe shall conform to ASTM D 2996, with short-time rupture strength hoop tensile stress of 30,000 p.s.i. minimum.
All parapet joints and reinforcement shall be placed as shown symmetric about centerline.
See sheet 8 and 9 of 17 for Approach Slabs and Approach Parapets.

**SUPERSTRUCTURE
BILL OF MATERIAL**

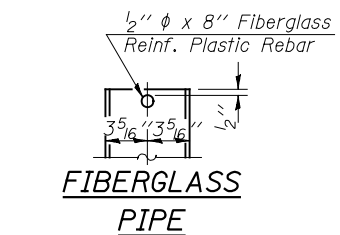
Bar	No.	Size	Length	Shape
d(E)	290	#5	38'-6"	—
a1(E)	189	#5	37'-11"	—
a2(E)	580	#6	6'-0"	—
b(E)	168	#5	40'-5"	—
b1(E)	78	#6	33'-1"	—
b2(E)	180	#5	32'-8"	—
d(E)	344	#5	5'-7"	—
d1(E)	344	#5	8'-1"	—
e2(E)	56	#4	18'-6"	—
e3(E)	64	#4	7'-3"	—
e4(E)	42	#4	17'-1"	—
e5(E)	4	#8	37'-3"	—
e6(E)	4	#4	37'-3"	—
e7(E)	8	#8	7'-3"	—
e8(E)	4	#8	27'-7"	—
e9(E)	4	#4	26'-7"	—
m(E)	4	#6	38'-10"	—
m1(E)	6	#6	38'-10"	—
m2(E)	24	#6	8'-10"	—
m3(E)	10	#6	6'-2"	—
m4(E)	4	#6	3'-0"	—
s(E)	82	#5	5'-5"	—
s1(E)	72	#4	8'-8"	—
v(E)	80	#5	3'-4"	—
Reinforcement Bars, Epoxy Coated		Pound		51,010
Concrete Superstructure		Cu. Yds.		217.9



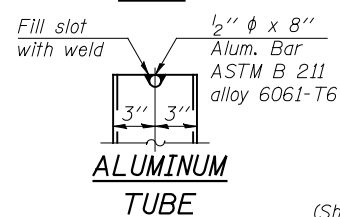
SECTION B-B
*Dimension as required by Pipe Clamp



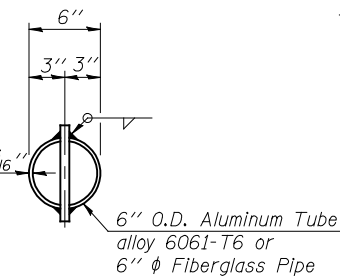
TOP PLAN



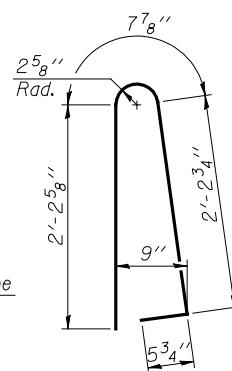
FIBERGLASS PIPE



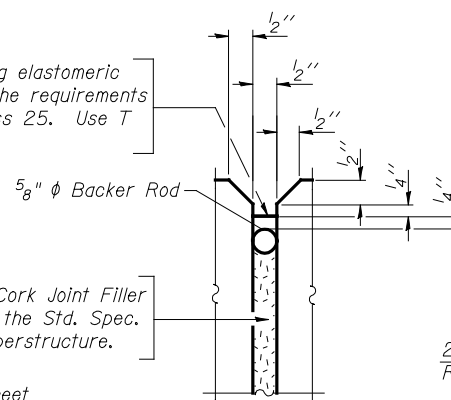
ALUMINUM TUBE



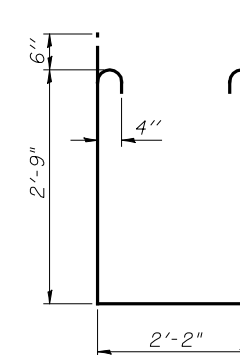
TOP PLAN
(Showing Aluminum Tube)



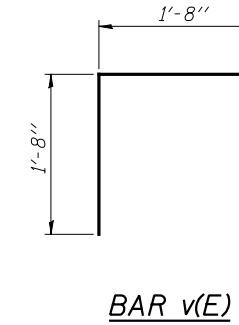
BAR d(E)



BAR d1(E)



BAR s1(E)



BAR v(E)

**SUPERSTRUCTURE DETAILS
U.S. 136 OVER
PRAIRIE CREEK
STRUCTURE NO. 057-0245**

SHEET 7 OF 17	F.A.P. RTE. 315	SECTION 120BR-1	COUNTY MCLAN	TOTAL SHEETS 49	SHEET NO. 18
	STA. 126+95.70		CONTRACT NO. 70524		
FED. ROAD DIST. NO.		ILLINOIS FED. AID PROJECT			

McDonough-Whitlow, P.C.
Consulting Engineers & Land Surveyors
138 East Wood Street
Hillboro, IL 62049
Phone: 217.332.9233
Fax: 217.332.6300
PROFESSIONAL DESIGN NO. 184-002754

DESIGNED: CMF	DRAWN: RNH
CHECKED: TMM	CHECKED: TMM

FILE: F:\Projects\DOT PROJECTS\05-044-6\Drawings\0570245-70524.dgn
USER: RNH
DATE: 09/30/2009 14:48