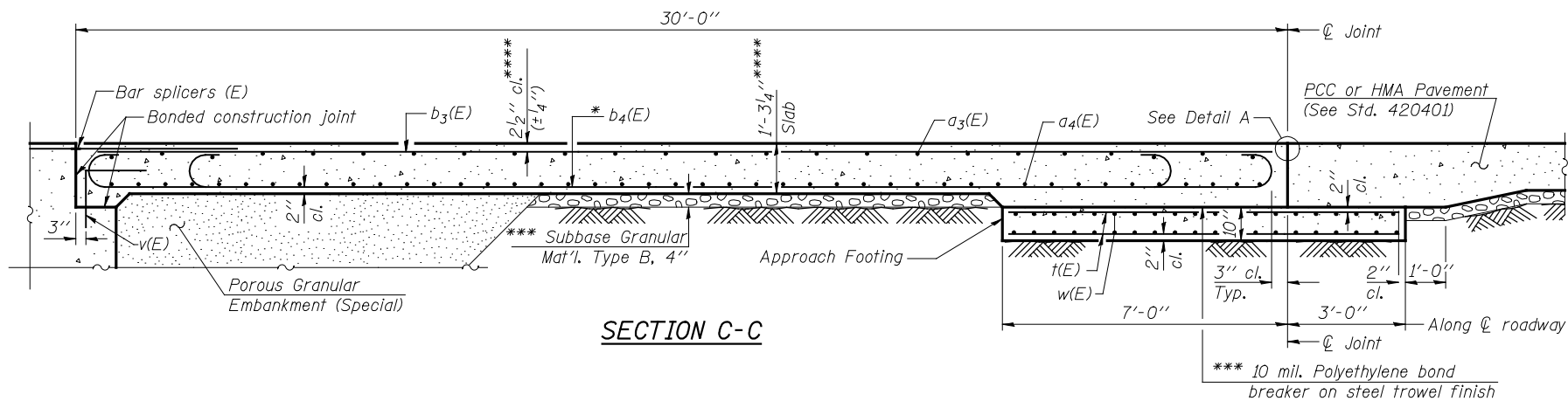


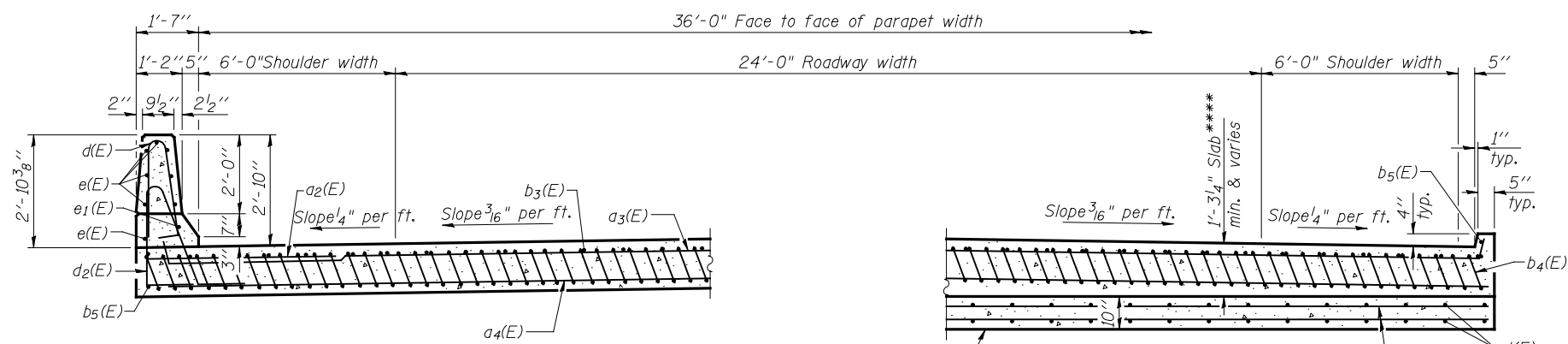
STATE OF ILLINOIS
DEPARTMENT OF TRANSPORTATION

Notes:

See sheet 8 of 17 for Detail A and View B-B.
Approach slab and parapet concrete shall be paid for as Concrete Superstructure.
Approach footing concrete shall be paid for as Concrete Structures.
Reinforcement shall be paid for as Reinforcement Bars, Epoxy Coated.
For v(E) bar details, see sheet 7 of 17.
The approach footing maximum applied service bearing pressure (Qmax) = 2.0 ksf.
For bar splicer details, see sheet 15 of 17.
Cost of excavation for approach footing included with Concrete Structures.
For Porous Granular Embankment (Special) and drainage treatment details, see sheet 6 of 17.



SECTION C-C

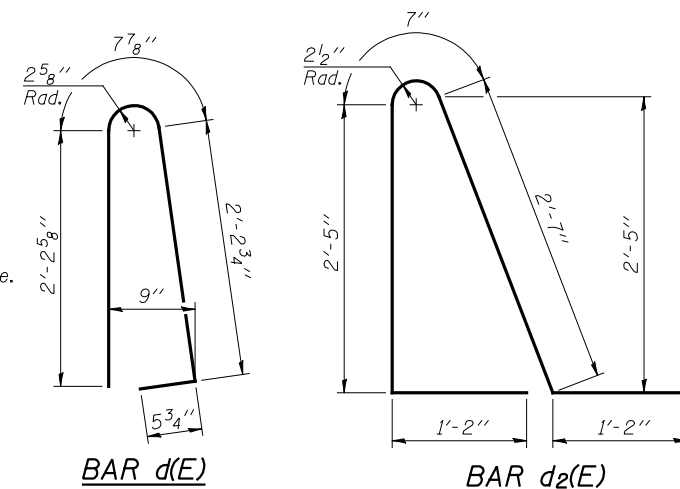


NEAR ABUTMENT

SECTION D-D
(See Plan for dimensions not shown)

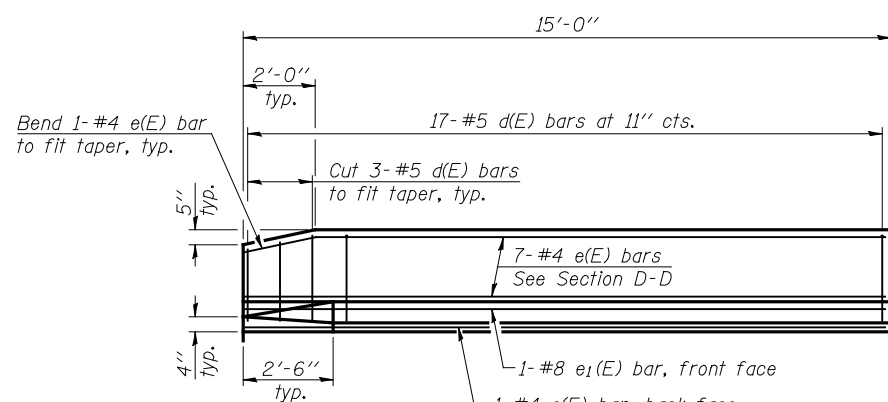
AT APPROACH FOOTING

* Tilt #9 b4(E) bars as required to maintain clearance.
*** Cost included with Concrete Superstructure.
**** Before grinding according to Bridge Smoothness Specification

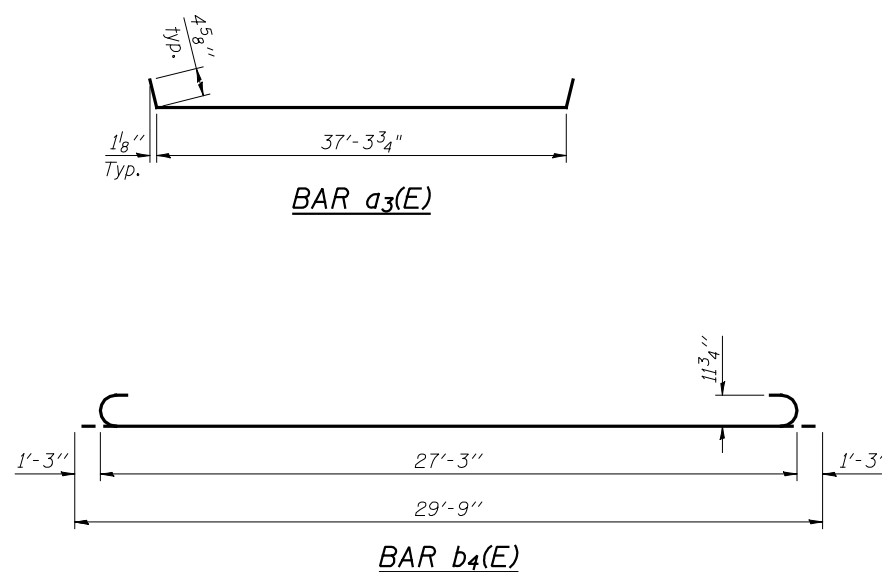


TWO APPROACHES
BILL OF MATERIAL

Bar	No.	Size	Length	Shape
a2(E)	48	#6	6'-0"	—
a3(E)	50	#4	38'-1"	—
a4(E)	92	#5	37'-6"	—
b3(E)	62	#4	29'-8"	—
b4(E)	180	#9	29'-9"	—
b5(E)	8	#4	14'-8"	—
d(E)	68	#5	5'-7"	—
d2(E)	68	#5	7'-11"	—
e(E)	32	#4	14'-8"	—
e1(E)	4	#8	14'-8"	—
t(E)	152	#4	9'-8"	—
w(E)	80	#5	37'-6"	—
Concrete Superstructure		Cu. Yd.	119.6	
Concrete Structures		Cu. Yd.	23.3	
Reinforcement Bars, Epoxy Coated		Pound	30,360	



VIEW E-E



BAR b4(E)

McDonough-Whitlow, P.C.
Consulting Engineers & Land Surveyors
138 East Wood Street
Hillboro, IL 62049
Phone: 217.332.9233
Fax: 217.332.6300
PROFESSIONAL DESIGN NO. 184-002754

DESIGNED: CMF DRAWN: RNH
CHECKED: TMM CHECKED: TMM

(Sheet 2 of 2)
BRIDGE APPROACH SLAB DETAILS
U.S. 136 OVER
PRAIRIE CREEK
STRUCTURE NO. 057-0245

SHEET	F.A.P. RTE.	SECTION	COUNTY	TOTAL SHEETS	SHEET NO.
9 OF 17	315	120BR-1	MCLAN	49	20
		STA. 126+95.70			CONTRACT NO. 70524
		FED. ROAD DIST. NO.	ILLINOIS	FED. AID PROJECT	