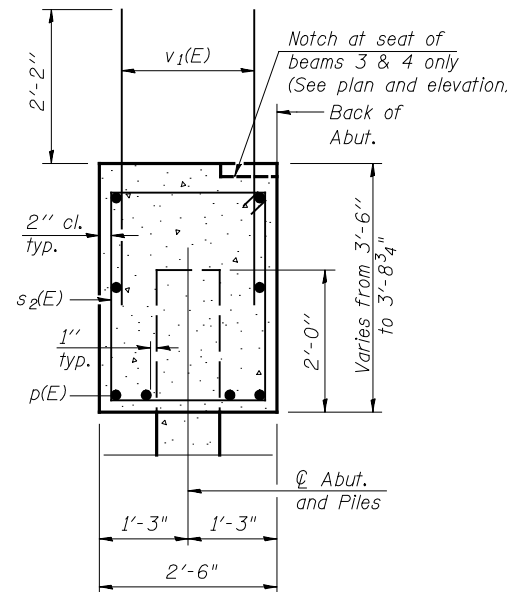
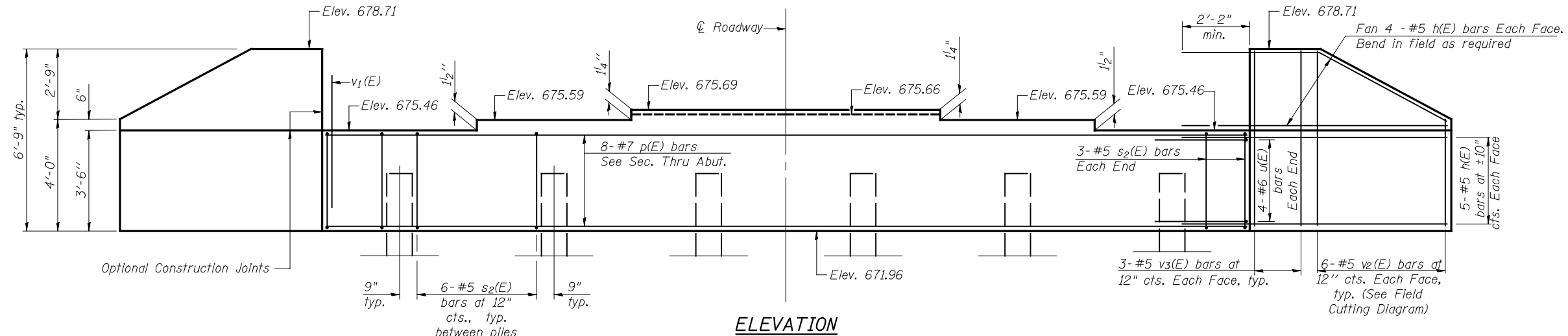


STATE OF ILLINOIS  
DEPARTMENT OF TRANSPORTATION

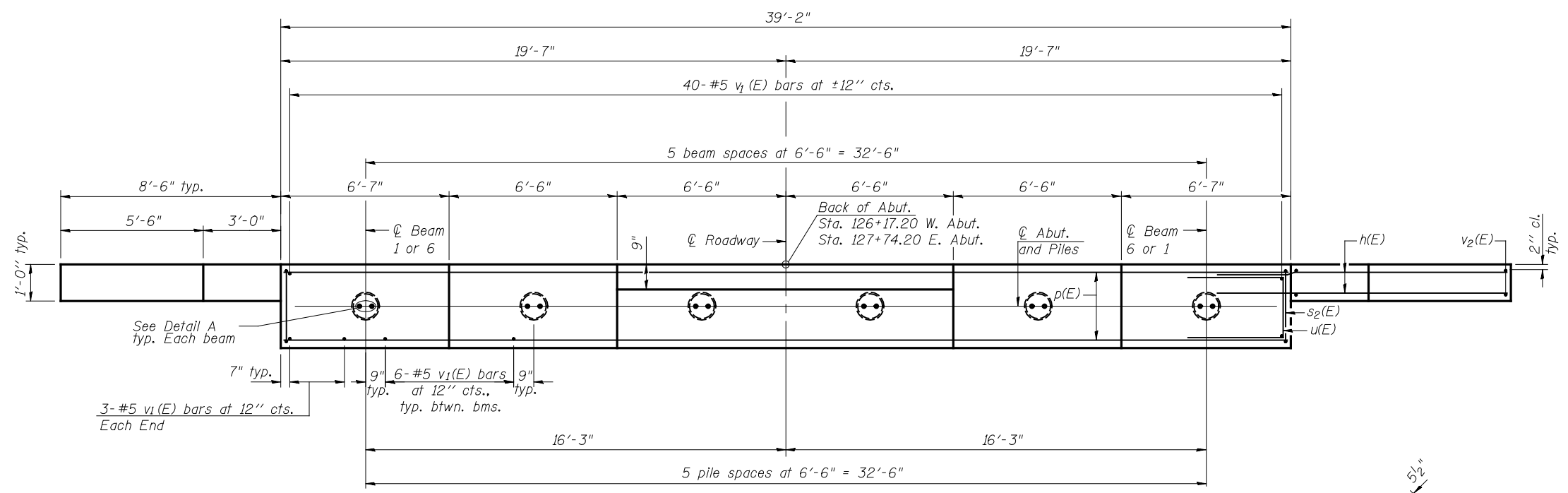
Notes:  
Pour steps monolithically with cap.  
The Test Pile(s) shall be driven to 110 percent of the Nominal Required Bearing indicated on the pile data information.  
Drive one (1) Test Pile in a production location at the West Abutment.  
For details of piles see sheet 14 of 17.



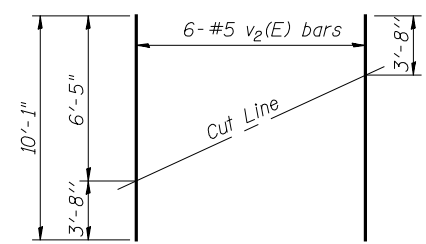
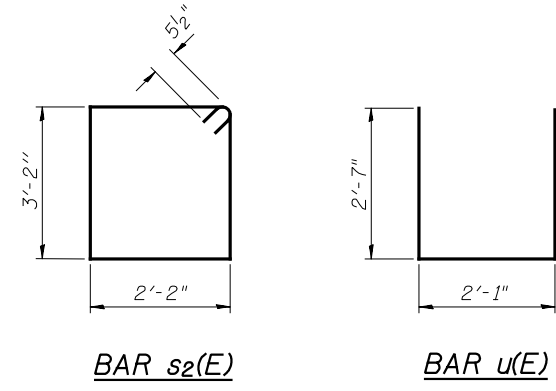
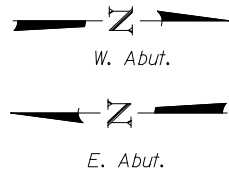
SEC. THRU ABUT.

TWO ABUTMENTS  
BILL OF MATERIAL

Bar	No.	Size	Length	Shape
h(E)	72	#5	11'-2"	—
p(E)	16	#7	38'-10"	—
s <sub>2</sub> (E)	72	#5	11'-7"	□
u(E)	16	#6	7'-3"	—
v <sub>1</sub> (E)	152	#5	4'-4"	—
v <sub>2</sub> (E)	24	#5	10'-1"	—
v <sub>3</sub> (E)	24	#5	6'-5"	—
				West Abut.
				East Abut.
Structure Excavation		Cu. Yd.	119	119
Concrete Structures		Cu. Yd.	16.3	16.3
Reinforcement Bars, Epoxy Coated		Pound	2,130	2,130
Furnishing Metal Shell Piles, 14" x 0.312"		Foot	200	240
Driving Piles		Foot	200	240
Test Pile, Metal Shells		Each	1	0
Pile Shoes		Each	6	6



PLAN



FIELD CUTTING DIAGRAM

Order v<sub>2</sub>(E) full length. Cut as shown and use remainder of bars in opposite face.

DETAIL A

ABUTMENTS  
U.S. 136 OVER  
PRAIRIE CREEK  
STRUCTURE NO. 057-0245

SHEET 12 OF 17	F.A.P. RTE. 315	SECTION 120BR-1	COUNTY MCLAN	TOTAL SHEETS 49	SHEET NO. 23
		STA. 126+95.70		CONTRACT NO. 70524	
	FED. ROAD DIST. NO.	ILLINOIS	FED. AID PROJECT		

PILE DATA

Type: Metal Shell 14"φ x 0.312" walls with Pile Shoes  
Nominal Required Bearing: W. Abut: 435 kips, E. Abut: 370 kips  
Factored Resistance Available: 135 kips  
Est. Length: 40'  
No. Production Piles: 11  
No. Test Piles: 1

<p>McDonough-Whitlow, P.C. Consulting Engineers &amp; Land Surveyors 138 East Wood Street Hillboro, IL 62049 Phone: 217.332.9233 Fax: 217.332.6300 PROFESSIONAL DESIGN NO. 184-002754</p>	
DESIGNED: CMF	DRAWN: RNH
CHECKED: TMM	CHECKED: TMM

FILE: F:\Projects\DOT PROJECTS\05-044-6\Drawings\0570245-70524.dgn  
USER: RNH  
DATE: 09/30/2009 14:48