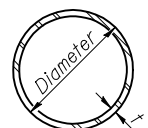
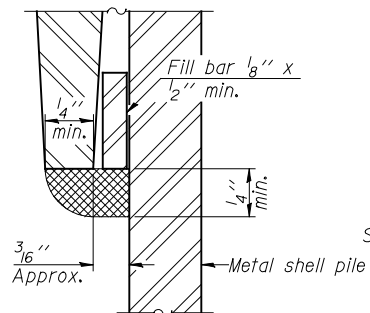


STATE OF ILLINOIS
DEPARTMENT OF TRANSPORTATION

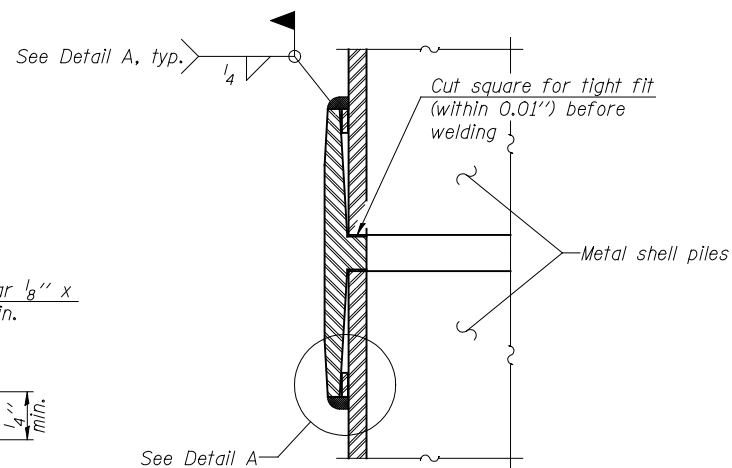


METAL SHELL PILE TABLE

Designation and outside diameter	Wall thickness t	Weight per foot (Lbs./ft.)	Inside volume (yd. ³ /ft.)
PP12	0.179"	22.60	0.0274
PP12	0.250"	31.37	0.0267
PP14	0.250"	36.71	0.0368
PP14	0.312"	45.61	0.0361

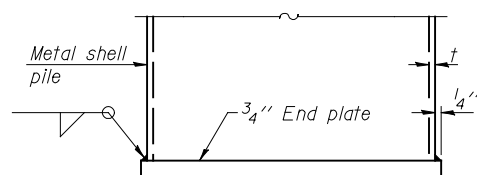


DETAIL A

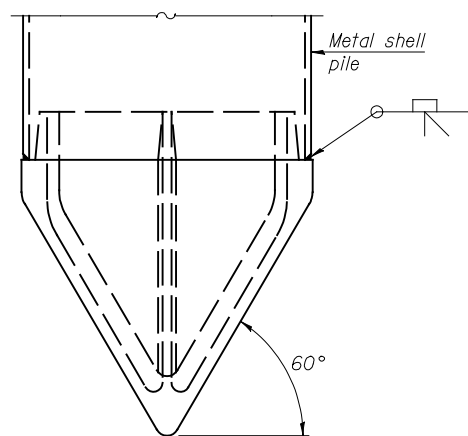


Notes:
The 1/8" x 1/2" min. fill bar may be constructed of 2 bars with a 1/8" max. gap between them.
Pile segments shall be driven to solid contact with splicer before welding.

WELDED COMMERCIAL SPLICE



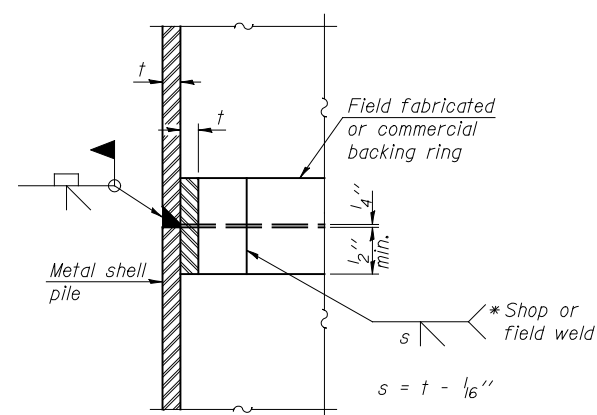
END PLATE ATTACHMENT



Note A:
When called for on the plans, the Contractor shall furnish metal shell pile shoes consisting of a single piece conical pile point as shown. The pile shoes shall be cast in one piece steel according to either ASTM A 148 Grade 90-60 or AASHTO M 103 Grade 65-35 and shall provide full bearing over the full circumference of the metal shell pile. The pile shoe shall have tapered leads to assure proper alignment and fitting and shall be secured to the pile with a circumferential weld.

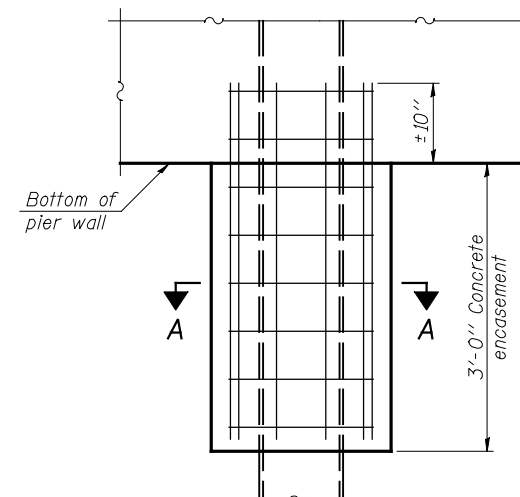
METAL SHELL PILE SHOE ATTACHMENT

(See Note A)

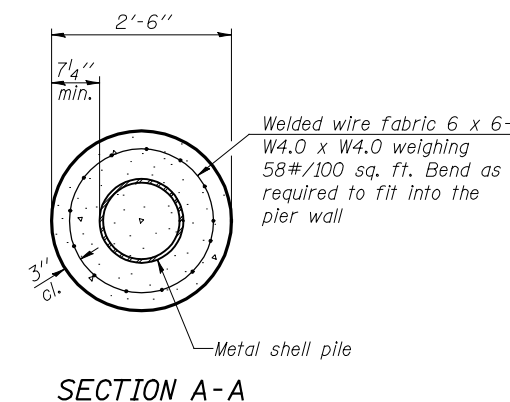


COMPLETE PENETRATION WELD SPLICE

* Field fabricated backing ring may be made from pile shell by removing segment to allow reducing circumference and vertically rejoin with partial joint penetration weld.



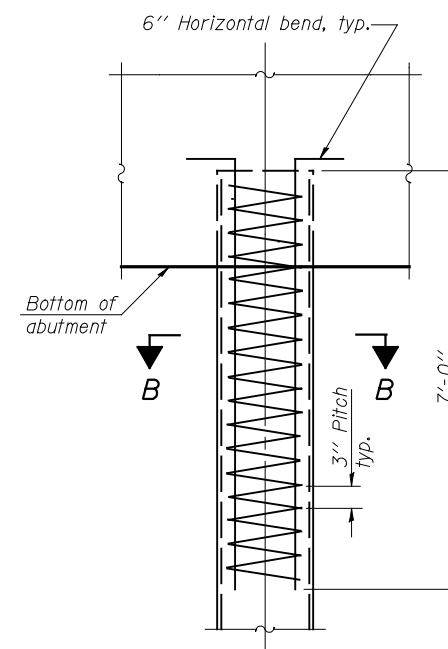
ELEVATION



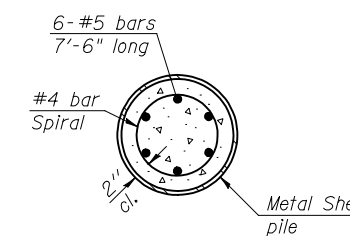
SECTION A-A

Note:
Forms for encasement may be omitted when soil conditions permit.

CONCRETE ENCASEMENT AT PIERS



ELEVATION



SECTION B-B

METAL SHELL REINFORCEMENT AT ABUTMENTS

Note:
The metal shell piles shall be according to ASTM A 252 Grade 3.

METAL SHELL PILE DETAILS
U.S. 136 OVER
PRAIRIE CREEK
STRUCTURE NO. 057-0245

SHEET 14 OF 17	F.A.P. RTE. 315	SECTION 120BR-1	COUNTY MCLEAN	TOTAL SHEETS 49	SHEET NO. 25
	STA. 126+95.70			CONTRACT NO. 70524	
FED. ROAD DIST. NO. ILLINOIS FED. AID PROJECT					

<p>McDonough-Whitlow, P.C. Consulting Engineers & Land Surveyors 138 East Wood Street Hillboro, IL 62049 Phone: 217.332.9233 Fax: 217.332.6300 PROFESSIONAL DESIGN NO. 184-002754</p>	
DESIGNED: CMF	DRAWN: RNH
CHECKED: TMM	CHECKED: TMM

F-MS 10-1-08

DATE: 09/30/2009 14:48 USER: RNH FILE: F:\Projects\DOT PROJECTS\05-044-6\Drawings\0570245-70524.dgn