

STATE OF ILLINOIS
DEPARTMENT OF TRANSPORTATION
DIVISION OF HIGHWAYS

F.A.P. RTE.	SECTION	COUNTY	TOTAL SHEETS	SHEET NO.
71	121R	MCLEAN	87	1
		ILLINOIS	CONTRACT NO. 70592	

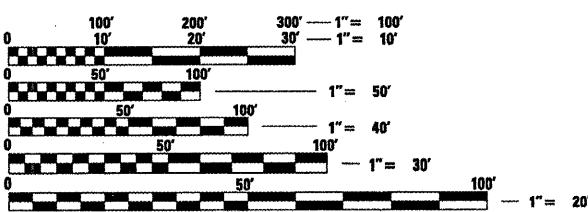
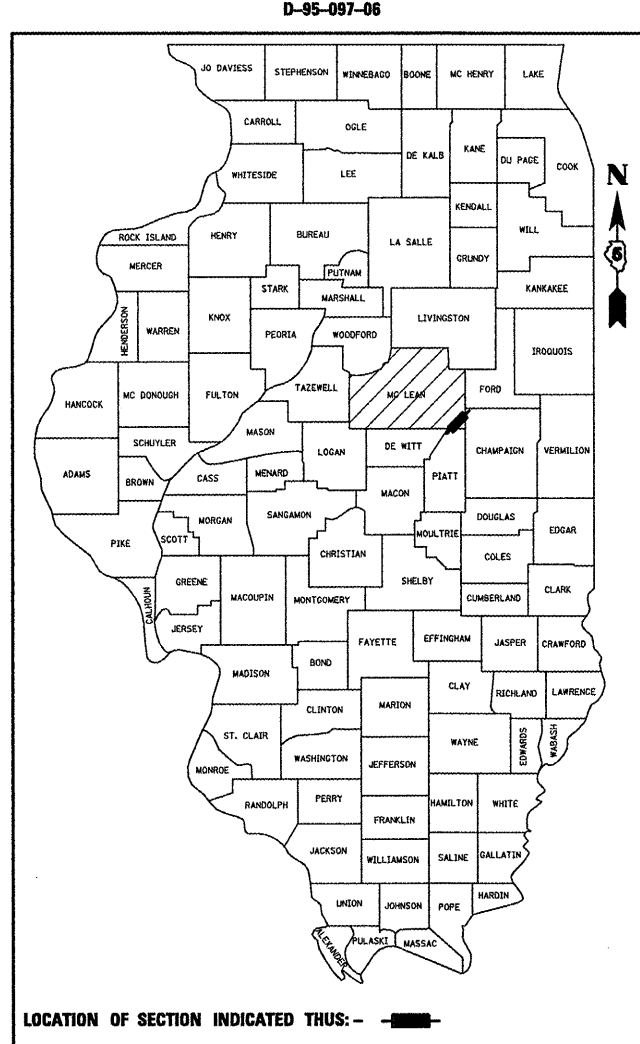
FOR INDEX OF SHEETS, SEE SHEET NO. 2

DESIGN DESIGNATION: 110(29) MINOR ARTERIAL 3.59 (FD-20)
 CURRENT ADT (2009): 1,150 VEHICLES PER DAY
 % P.C. = 72.1 (829)
 % S.U. = 9.2 (106)
 % M.U. = 18.7 (215)

**PROPOSED
 HIGHWAY PLANS**

FAP ROUTE 71 (IL 54)
SECTION 121R
PROJECT ACHSIP-0071(118)
HORIZONTAL REALIGNMENT
1 MI S. OF BELLFLOWER
MCLEAN COUNTY

C-95-097-06

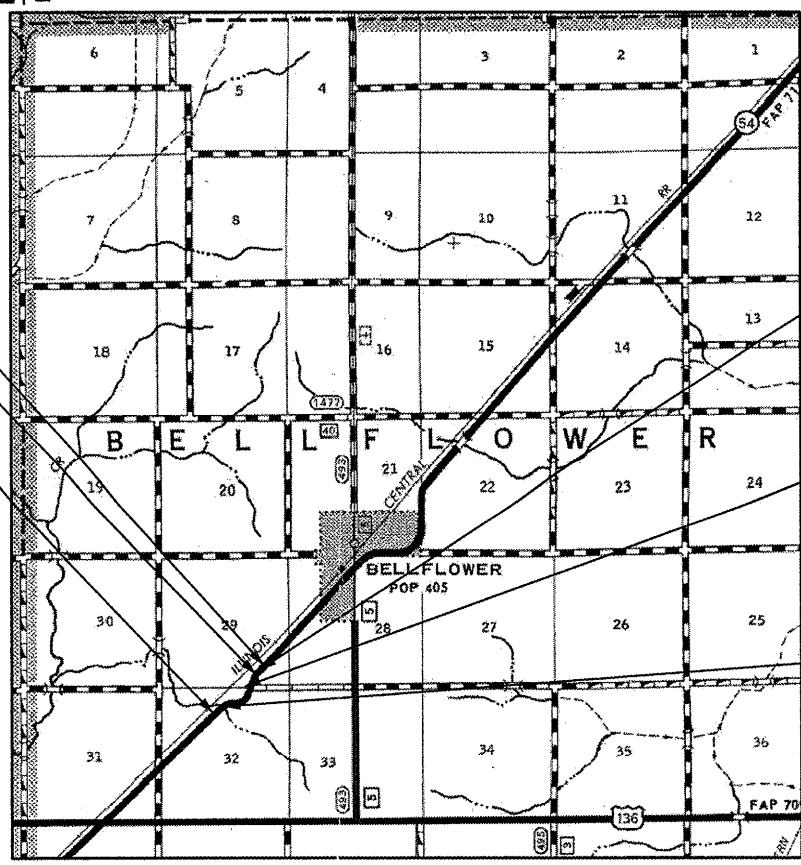


FULL SIZE PLANS HAVE BEEN PREPARED USING STANDARD ENGINEERING SCALES. REDUCED SIZED PLANS WILL NOT CONFORM TO STANDARD SCALES. IN MAKING MEASUREMENTS ON REDUCED PLANS, THE ABOVE SCALES MAY BE USED.

J.U.L.I.E.
 JOINT UTILITY LOCATION INFORMATION FOR EXCAVATION
 1-800-892-0123
 OR 811 BELLFLOWER TOWNSHIP

PROJECT ENGINEER: KEVIN TRAPP
 PROJECT MANAGER: RUSTIN KEYS
 PHONE (217) 465-4181
 CONTRACT NO. 70592

R 5E, 3RD P.M.
 R 6E, 3RD P.M.



SECTION 121R ENDS
 STA. 395+00.00

STATION EQUATION
 STA. 389+63.66 (BK) =
 STA. 390+79.19 (AH)

SECTION 121R BEGINS
 STA. 360+00.00

T 23N
 T 22N



T 22N
 T 21N

PROPOSED STRUCTURE
 PR. S.N. 057-2049, STA. 388+50.00
 2@12'x3'x39' PRCBC WITH
 PRC END SECTIONS
 NO SKEW

PROPOSED STRUCTURE
 PR. S.N. 057-2048, STA. 0+76.31 (TR 547)
 2@12'x3'x97' PRCBC WITH
 PRC END SECTIONS
 NO SKEW

STRUCTURE REPLACEMENT
 EX. S.N. 057-8001, STA. 363+70
 PR. S.N. 057-2047, STA. 363+70
 2@12'x6'x54' PRCBC WITH
 C.I.P. APRON END SECTIONS
 NO SKEW

GROSS LENGTH = 3,384.47 FT. = 0.641 MILE
 NET LENGTH = 3,384.47 FT. = 0.641 MILE

STATE OF ILLINOIS
 DEPARTMENT OF TRANSPORTATION
 DIVISION OF HIGHWAYS

SUBMITTED 12/20/09

Paul E. Cooney
 DEPUTY DIRECTOR OF HIGHWAYS, REGION ENGINEER

December 4, 2009
Charles J. Ingersoll
 ENGINEER OF DESIGN AND ENVIRONMENT

December 4, 2009
Christine M. Reed
 DIRECTOR OF HIGHWAYS, CHIEF ENGINEER

**PRINTED BY THE AUTHORITY
 OF THE STATE OF ILLINOIS**